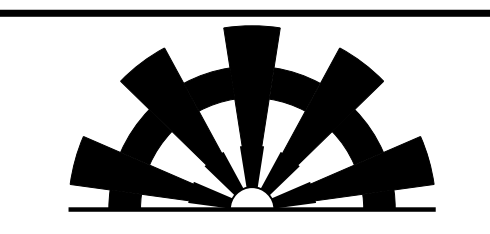


8.17.2023

4/16/2023
c:\users\moferguson\documents\pov_working\dms43124\2707E_RDY_PSH14.dgn
moferguson

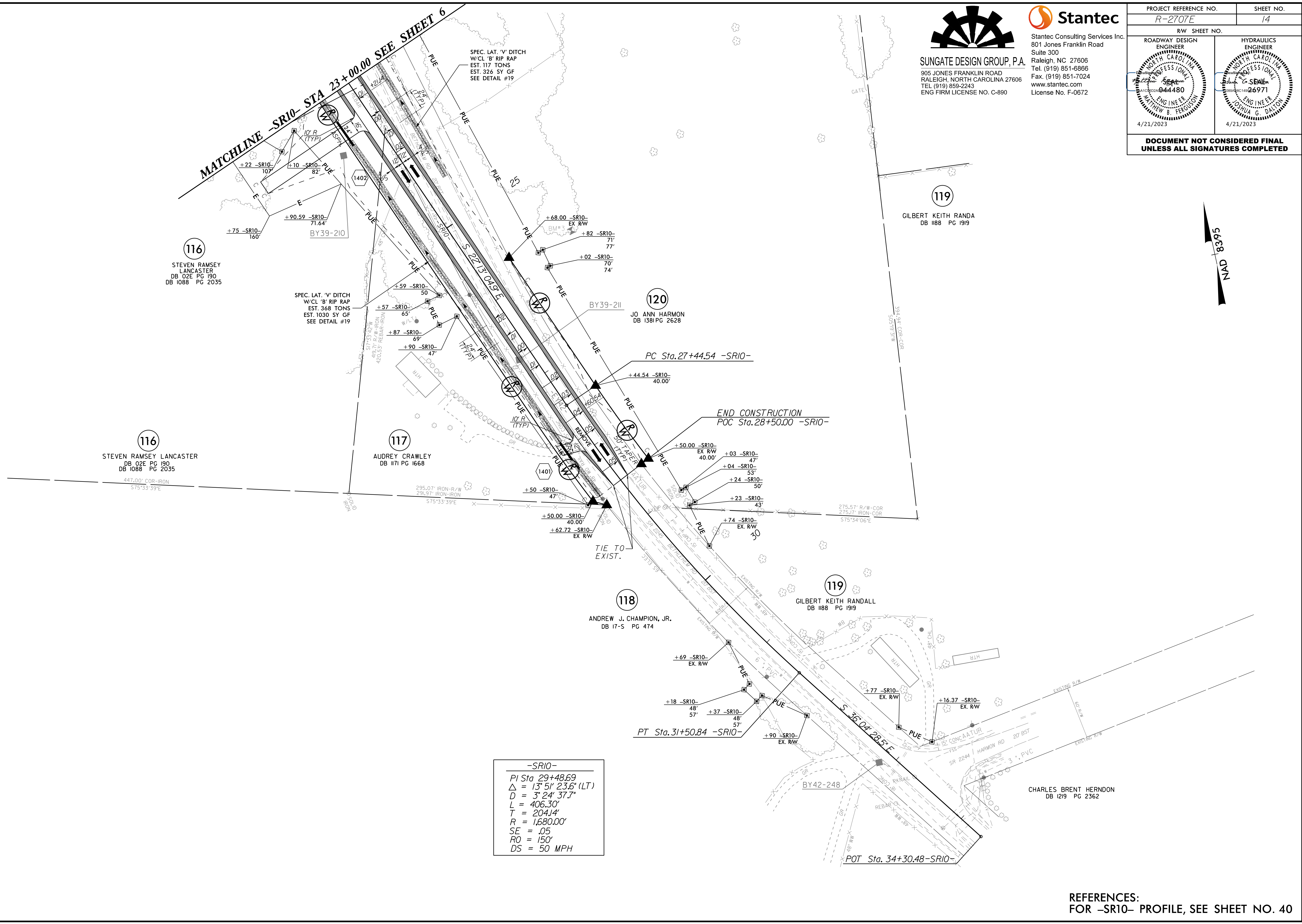


SUNGATE DESIGN GROUP, P.A.
905 JONES FRANKLIN ROAD
RALEIGH, NORTH CAROLINA 27606
TEL (919) 859-2243
ENG FIRM LICENSE NO. C-890



Stantec
Stantec Consulting Services Inc.
801 Jones Franklin Road
Suite 300
Raleigh, NC 27606
Tel. (919) 851-6866
Fax. (919) 851-7024
www.stantec.com
License No. F-0672

PROJECT REFERENCE NO. <i>R-2707E</i>	SHEET NO. 14
RW SHEET NO.	HYDRAULICS
ROADWAY DESIGN ENGINEER <i>Matthew B. Ferguson</i> PROFESSIONAL ENGINEER 044480 4/21/2023	HYDRAULICS ENGINEER <i>Joshua G. Dalton</i> PROFESSIONAL ENGINEER 26971 4/21/2023
DOCUMENT NOT CONSIDERED FINAL UNLESS ALL SIGNATURES COMPLETED	



-SR10-

PI Sta 29+48.69
 $\Delta = 13^{\circ} 51' 23.6''$ (LT)
 D = 3' 24' 37.7"
 L = 406.30'
 T = 204.14'
 R = 1,680.00'
 SE = .05
 RO = 150'
 DS = 50 MPH

REFERENCES:
FOR -SR10- PROFILE, SEE SHEET NO. 40