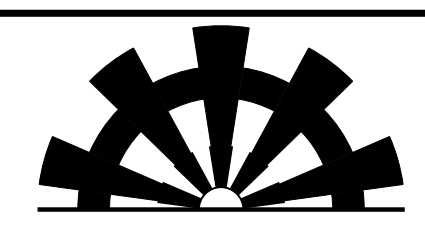


8/17/99

NO WORK ON THIS SHEET



KINGS MOUNTAIN DISTRICT SCHOOLS
DB 15-1 PG 420
DB 8A PG 76
DB S-1 PG 259
DB 5X PG 639
DB 1376 PG 2293

SUNGATE DESIGN GROUP, P.A.
905 JONES FRANKLIN ROAD
RALEIGH, NORTH CAROLINA 27606
TEL (919) 859-2243
ENG FIRM LICENSE NO. C-890

Stantec Consulting Services Inc.
801 Jones Franklin Road
Suite 300
Raleigh, NC 27606
Tel. (919) 851-6866
Fax. (919) 851-7024
www.stantec.com
License No. F-0672

PROJECT REFERENCE NO. <i>R-2707E</i>		SHEET NO. <i>13</i>	
RW SHEET NO.		HYDRAULICS ENGINEER	
ROADWAY DESIGN ENGINEER		HYDRAULICS ENGINEER	
DOCUMENT NOT CONSIDERED FINAL UNLESS ALL SIGNATURES COMPLETED			

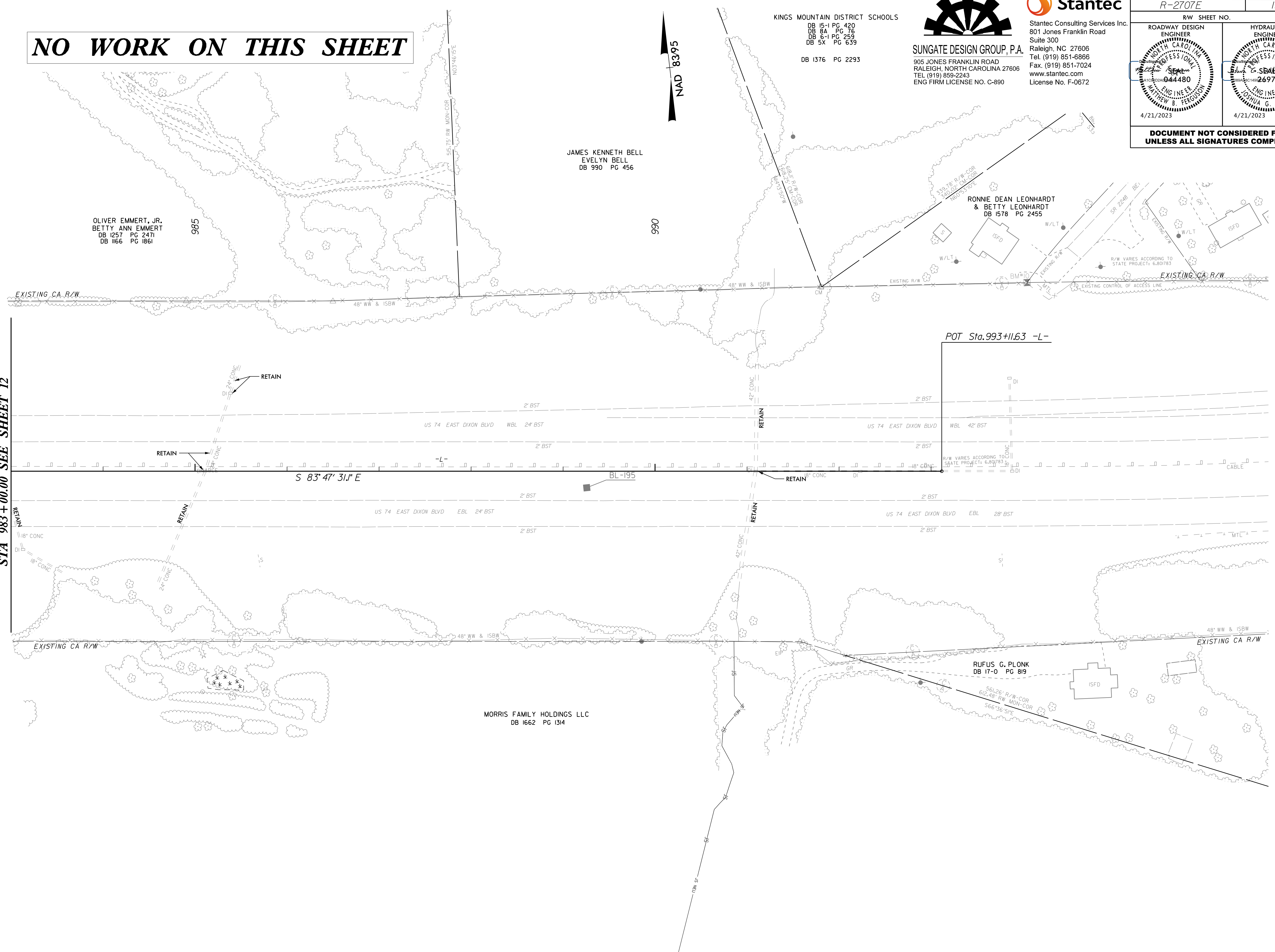
JAMES KENNETH BELL
EVELYN BELL
DB 990 PG 456

RONNIE DEAN LEONHARDT
& BETTY LEONHARDT
DB 1578 PG 2455

OLIVER EMMERT, JR.
BETTY ANN EMMERT
DB 1257 PG 2471
DB 1166 PG 1861

MORRIS FAMILY HOLDINGS LLC
DB 1662 PG 1314

MATCHLINE -L-
STA 983+00.00 SEE SHEET 12



4/6/2023
c:\users\moferguson\documents\pwworking\dms43124\2707E_RDY_PSH13.dgn
moferguson