

8/17/23

4/16/2023
c:\users\moferguson\documents\pwworking\dms43124\2707E_RDY_PSH10.dgn
moferguson

-SR7-

PI Sta 74+83.67
 $\Delta = 17^{\circ} 55' 53.6" (LT)$
 $D = 3^{\circ} 13' 07.9"$
 $L = 557.08'$
 $T = 280.83'$
 $R = 1,780.00'$
 $SE = .05$
 $RO = 120'$
 $DS = 50 MPH$

SUNGATE DESIGN GROUP, P.A.
 905 JONES FRANKLIN ROAD
 RALEIGH, NORTH CAROLINA 27606
 TEL (919) 859-2243
 ENG FIRM LICENSE NO. C-890

Stantec
 Stantec Consulting Services Inc.
 801 Jones Franklin Road
 Suite 300
 Raleigh, NC 27606
 Tel. (919) 851-6866
 Fax. (919) 851-7024
 www.stantec.com
 License No. F-0672

PROJECT REFERENCE NO. R-2707E	SHEET NO. 10
RW SHEET NO.	HYDRAULICS ENGINEER
ROADWAY DESIGN ENGINEER	HYDRAULICS ENGINEER
DOCUMENT NOT CONSIDERED FINAL UNLESS ALL SIGNATURES COMPLETED	

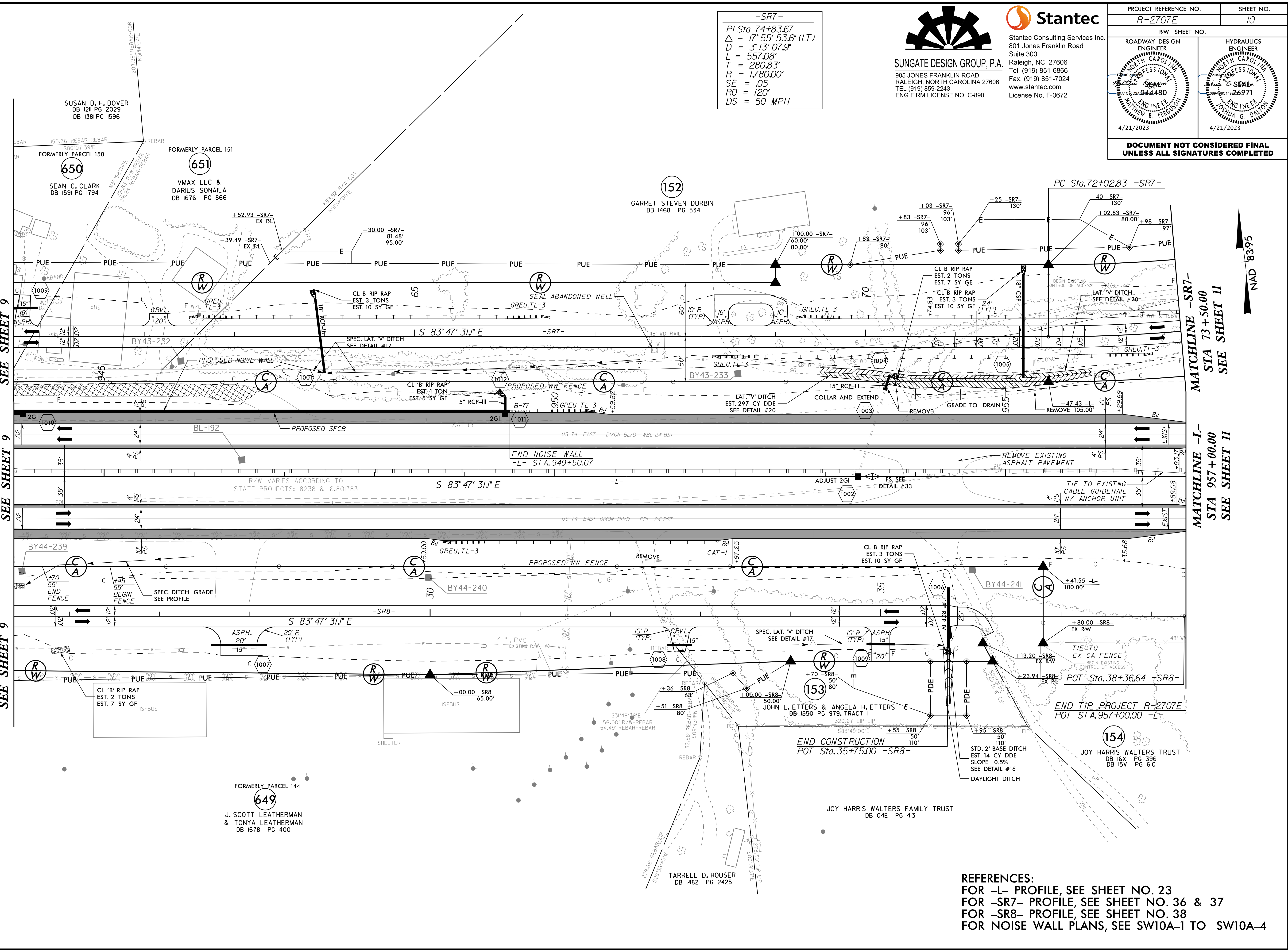
MATCHLINE -SR7-
 STA 60+55.00
 SEE SHEET 9

MATCHLINE -L-
 STA 944+00.00
 SEE SHEET 9

MATCHLINE -SR8-
 STA 25+30.58
 SEE SHEET 9

MATCHLINE -SR7-
 STA 73+50.00
 SEE SHEET 11

MATCHLINE -L-
 STA 957+00.00
 SEE SHEET 11



REFERENCES:
 FOR -L- PROFILE, SEE SHEET NO. 23
 FOR -SR7- PROFILE, SEE SHEET NO. 36 & 37
 FOR -SR8- PROFILE, SEE SHEET NO. 38
 FOR NOISE WALL PLANS, SEE SW10A-1 TO SW10A-4