

<p>-L-</p> <p>Pls Sta 933+76.53 $\Delta s = 3' 24" 42.3"$ $Ls = 315.00'$ $LT = 210.04'$ $ST = 105.04'$</p>	<p>-Y46-</p> <p>Pls Sta 937+43.44 $\Delta = 11' 18" 42.8" (RT)$ $D = 2' 09" 58.3"$ $L = 522.20'$ $T = 261.95'$ $R = 2,645.00'$ $SE = .07$ $DS = 70 MPH$</p>	<p>-SR7-</p> <p>Pls Sta 941+08.72 $\Delta s = 3' 24" 42.3"$ $Ls = 315.00'$ $LT = 210.04'$ $ST = 105.04'$</p>	<p>-SR7-</p> <p>Pls Sta 53+77.14 $\Delta = 18' 08" 07.4" (RT)$ $D = 2' 00" 00.0"$ $L = 906.77'$ $T = 457.21'$ $R = 2,864.79'$ $SE = .04$ $RO = 100'$ $DS = 50 MPH$</p>	<p>-Y46-</p> <p>Pls Sta 12+99.99 $\Delta = 8' 26" 26.5" (RT)$ $D = 5' 40" 22.3"$ $L = 148.79'$ $T = 74.53'$ $R = 1,010.00'$ $SE = .04$ $RO = 84'$ $DS = 40 MPH$</p>
--	---	--	--	---

<p>-SR8-</p> <p>Pls Sta 16+28.32 $\Delta = 42' 15" 48.9" (RT)$ $D = 5' 30" 33.2"$ $L = 767.14'$ $T = 401.97'$ $R = 1,040.00'$ $SE = .06$ $RO = 150'$ $DS = 50 MPH$</p>
--

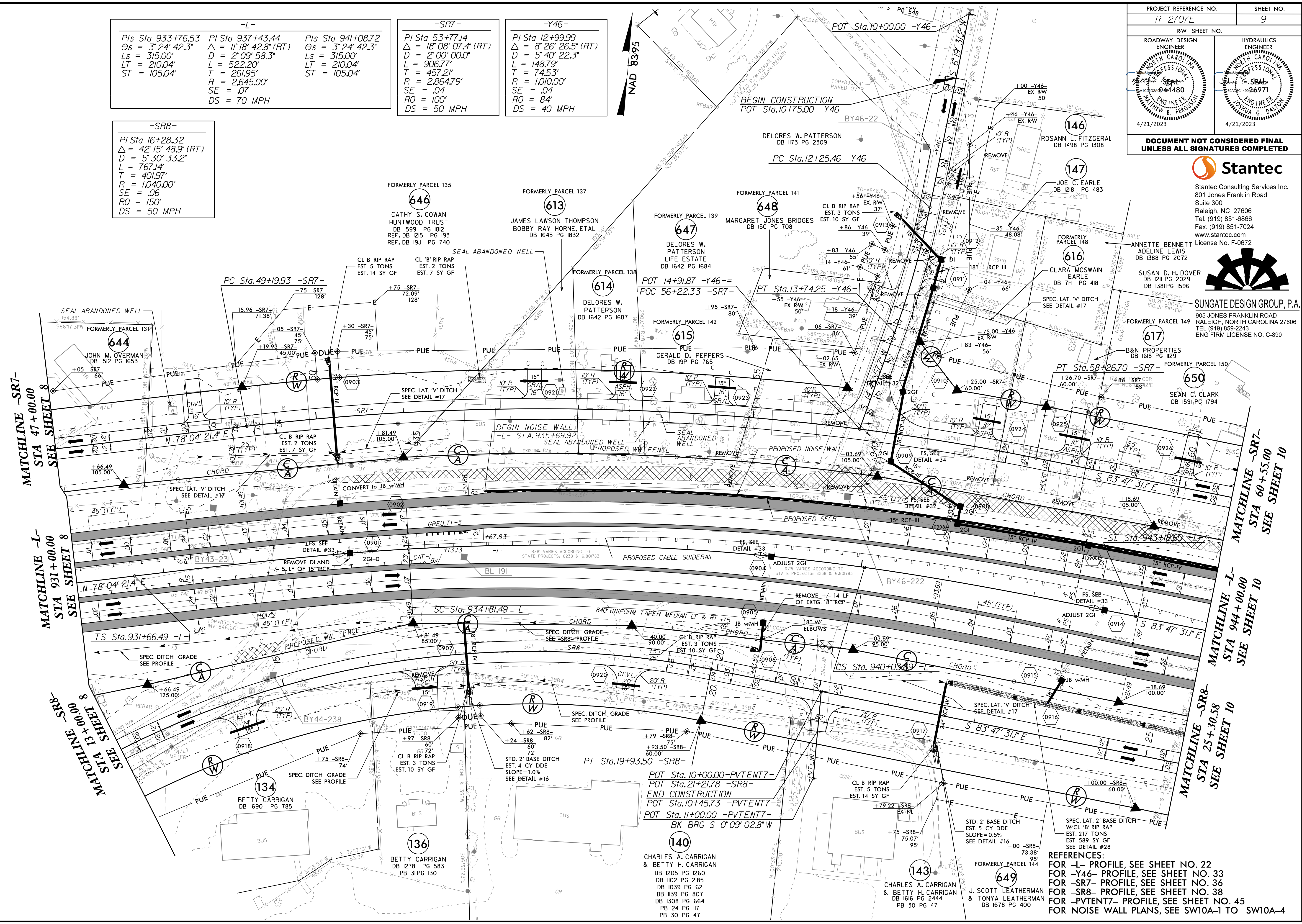
PROJECT REFERENCE NO. R-2707E	SHEET NO. 9
RW SHEET NO.	HYDRAULICS ENGINEER
ROADWAY DESIGN ENGINEER	PROFESSIONAL ENGINEER
4/21/2023	4/21/2023
DOCUMENT NOT CONSIDERED FINAL UNLESS ALL SIGNATURES COMPLETED	

Stantec

Stantec Consulting Services Inc.
 801 Jones Franklin Road
 Suite 300
 Raleigh, NC 27606
 Tel. (919) 851-6866
 Fax. (919) 851-7024
 www.stantec.com
 License No. F-0672

SUNGATE DESIGN GROUP, P.A.

905 JONES FRANKLIN ROAD
 RALEIGH, NORTH CAROLINA 27606
 TEL (919) 859-2243
 ENG FIRM LICENSE NO. C-890



POT Sta. 10+00.00 -PVENT7-
 POT Sta. 21+21.78 -SR8-
 END CONSTRUCTION
 POT Sta. 10+45.73 -PVENT7-
 POT Sta. 11+00.00 -PVENT7-
 BK BRG S 0'09" 02.8" W

140
 CHARLES A. CARRIGAN & BETTY H. CARRIGAN
 DB 1205 PG 1260
 DB 1102 PG 2185
 DB 1039 PG 62
 DB 1139 PG 807
 DB 1308 PG 664
 PB 24 PG 117
 PB 30 PG 47

REFERENCES:
 FOR -L- PROFILE, SEE SHEET NO. 22
 FOR -Y46- PROFILE, SEE SHEET NO. 33
 FOR -SR7- PROFILE, SEE SHEET NO. 36
 FOR -SR8- PROFILE, SEE SHEET NO. 38
 FOR -PVENT7- PROFILE, SEE SHEET NO. 45
 FOR NOISE WALL PLANS, SEE SW10A-1 TO SW10A-4