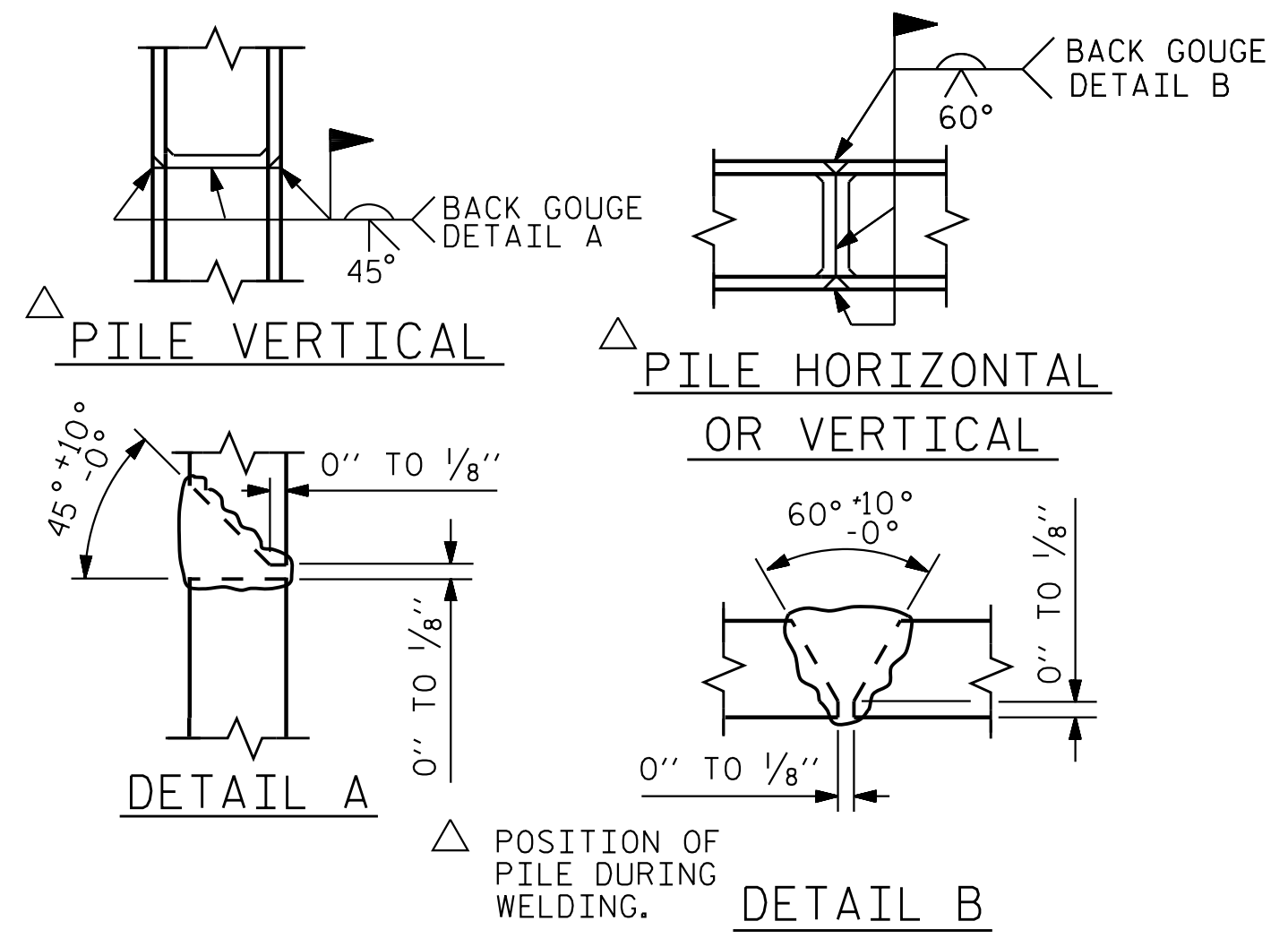


BAGGED STONE AND PIPE SHALL BE PLACED IMMEDIATELY AFTER COMPLETION OF END BENT EXCAVATION. PIPE MAY BE EITHER CONCRETE, CORRUGATED STEEL, CORRUGATED ALUMINUM ALLOY, OR CORRUGATED PLASTIC. PERFORATED PIPE WILL NOT BE ALLOWED.

BAGGED STONE SHALL REMAIN IN PLACE UNTIL THE ENGINEER DIRECTS THAT IT BE REMOVED. THE CONTRACTOR SHALL REMOVE AND DISPOSE OF SILT ACCUMULATIONS AT BAGGED STONE WHEN SO DIRECTED BY THE ENGINEER. BAGS SHALL BE REMOVED AND REPLACED WHENEVER THE ENGINEER DETERMINES THAT THEY HAVE DETERIORATED AND LOST THEIR EFFECTIVENESS.

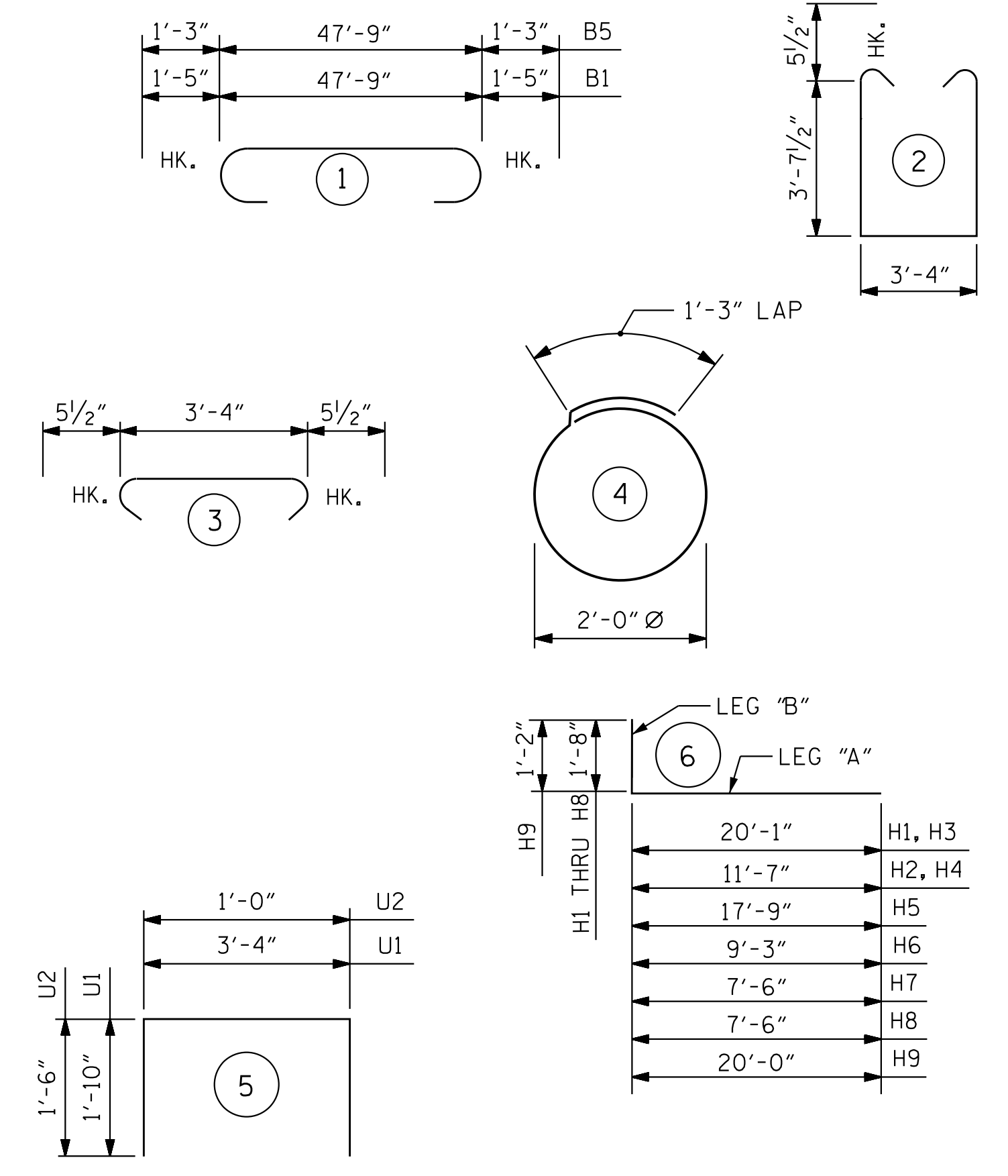
NO SEPARATE PAYMENT WILL BE MADE FOR THIS WORK AND THE ENTIRE COST OF THIS WORK SHALL BE INCLUDED IN THE UNIT CONTRACT PRICE BID FOR THE SEVERAL PAY ITEMS.

TEMPORARY DRAINAGE AT END BENT



PILE SPLICE DETAILS

BAR TYPES



ALL BAR DIMENSIONS ARE OUT TO OUT.

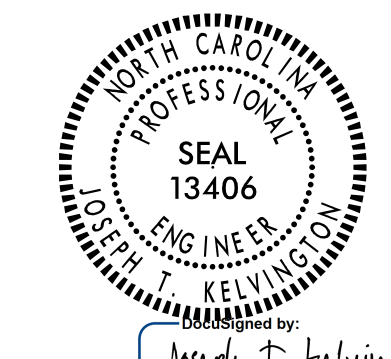
BILL OF MATERIAL

END BENT 1					
BAR	NO.	SIZE	TYPE	LENGTH	WEIGHT
B1	6	#10	1	50'-7"	1306
B2	2	#10	STR	47'-3"	407
B3	8	#4	STR	24'-10"	133
B4	6	#6	STR	47'-11"	432
B5	6	#9	1	50'-3"	1025
B6	19	#4	STR	3'-4"	42
B7	6	#4	STR	30'-5"	122
B8	6	#4	STR	19'-5"	78
B9	6	#4	STR	8'-5"	34
H1	16	#7	6	21'-9"	711
H2	8	#6	6	13'-3"	159
H3	13	#5	6	21'-9"	295
H4	12	#5	6	13'-3"	166
H5	10	#7	6	19'-5"	397
H6	4	#6	6	10'-11"	66
H7	10	#7	6	9'-2"	187
H8	4	#6	6	9'-2"	55
H9	2	#7	6	21'-2"	87
K1	8	#4	STR	2'-9"	15
K2	28	#4	STR	5'-10"	109
S1	64	#5	2	11'-6"	768
S2	56	#5	3	4'-3"	248
S3	32	#4	4	7'-7"	162
U1	30	#4	5	7'-0"	140
U2	12	#4	5	4'-0"	32
V1	74	#5	STR	7'-6"	579
V2	16	#5	STR	11'-1"	185
V3	44	#5	STR	11'-10"	543
V4	11	#5	STR	11'-0"	126
V5	11	#5	STR	11'-9"	135
REINFORCING STEEL					LBS. 8,744
CLASS A CONCRETE BREAKDOWN:					
POUR #1: CAP, COLLARS, WINGS				C.Y.	35.8
POUR #2: UPPER WINGS				C.Y.	17.5
CLASS A CONCRETE TOTAL				C.Y.	53.3

PROJECT NO. R-2707D
 CLEVELAND COUNTY
 STATION: 810+00.00 -L-

SHEET 4 OF 4

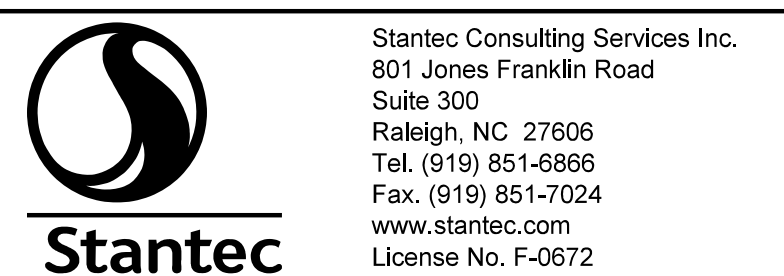
STATE OF NORTH CAROLINA
 DEPARTMENT OF TRANSPORTATION
 RALEIGH
 SUBSTRUCTURE
 END BENT 1 DETAILS



DESIGNED BY: Joseph T. Kelvington
 4/21/2023
 DOCUMENT NOT CONSIDERED FINAL UNLESS ALL SIGNATURES COMPLETED

REVISIONS						SHEET NO. S9-23	TOTAL SHEETS 30
NO.	BY:	DATE:	NO.	BY:	DATE:		
1			3				
2			4				

STR. #9



DRAWN BY: J.E. HAGENBUSH DATE: 12/09/22
 CHECKED BY: J.T. KELVINGTON DATE: 12/12/22
 DESIGN ENGINEER OF RECORD: J.T. KELVINGTON DATE: 04/21/23

jHagenbush

4/21/2023

c:\pvt\working\dmis7003\A\R2707D-SMU-LE104-2200B9.dgn