

NOTES

PROVIDE 1/4" HIGH BEAM BOLSTERS UPPER AT 4'-0" CTS. ATOP THE METAL STAY-IN-PLACE FORMS TO SUPPORT THE BOTTOM MAT OF "A" BARS. WHEN USING REMOVABLE FORMS, PROVIDE CONTINUOUS HIGH CHAIRS FOR METAL DECK (C.H.C.M.) @ 4'-0" CTS. WITH A HEIGHT TO SUPPORT THE BOTTOM MAT OF 'A' BARS A CLEAR DISTANCE OF 2 1/2" ABOVE THE TOP OF THE REMOVABLE FORM.

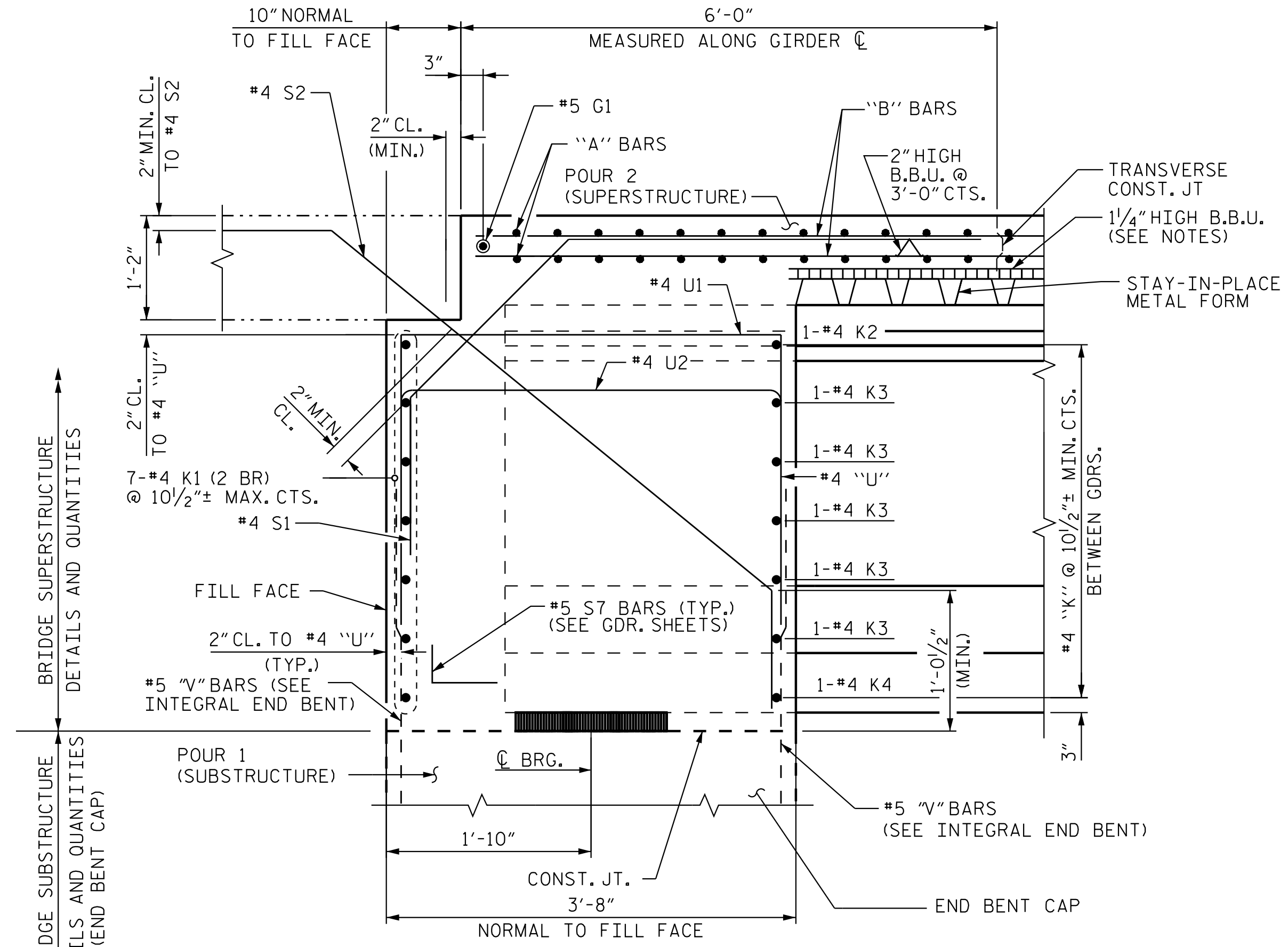
LONGITUDINAL STEEL MAY BE SHIFTED SLIGHTLY, AS NECESSARY, TO AVOID INTERFERENCE WITH STIRRUPS IN PRESTRESSED CONCRETE GIRDERS.

NO CHAMFER IS REQUIRED ON CORNERS OF GIRDER BUILDUPS.

PREVIOUSLY CAST CONCRETE IN THE UNIT SHALL HAVE ATTAINED A MINIMUM COMPRESSIVE STRENGTH OF 3,000 PSI BEFORE ADDITIONAL CONCRETE IS CAST IN THE UNIT EXCEPT AS NOTED IN THE PLANS.

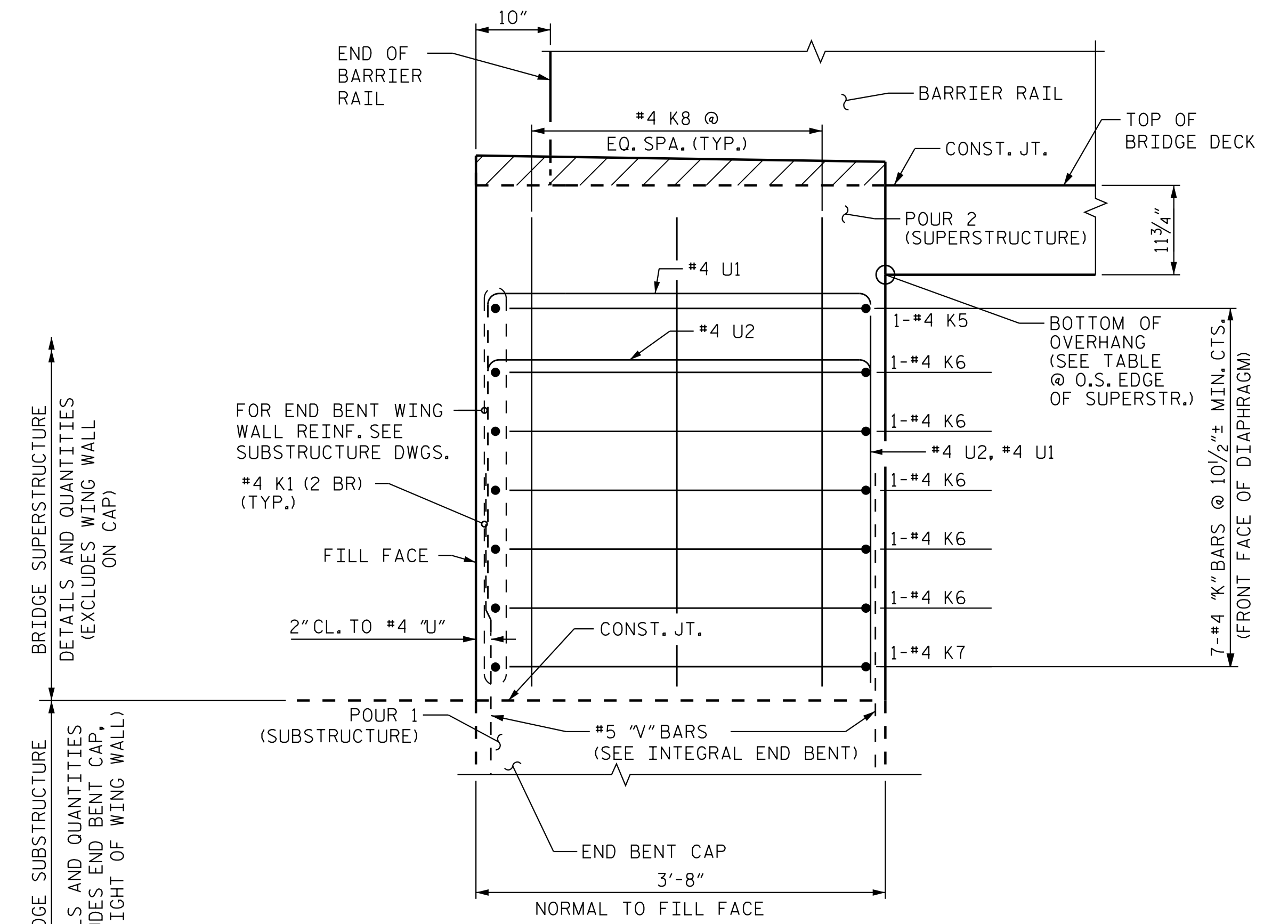
#5 G1 BAR MAY BE SHIFTED SLIGHTLY, AS NECESSARY, TO CLEAR REINFORCING STEEL AND STIRRUPS.

(2 BR) DENOTES 2 BAR RUN



SECTION B-B

SECTION THRU INTEGRAL END BENT DIAPHRAGM, SEE "PLAN OF SPANS DETAILS - DIAPHRAGMS", SHEET 3 OF 3

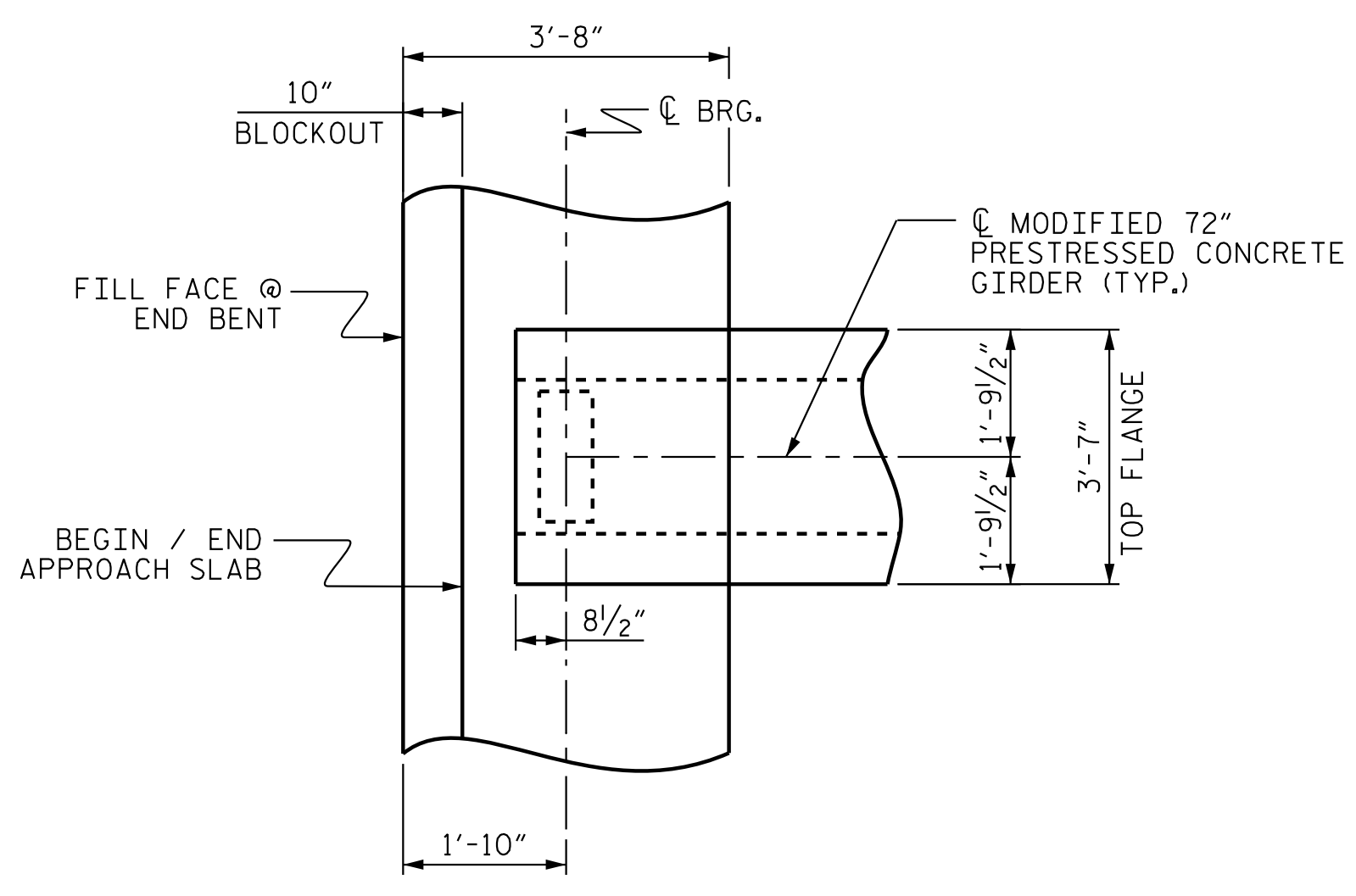


ELEVATION A-A

VIEW OF INTEGRAL END BENT DIAPHRAGM @ END BENT CONST. JT. SEE "PLAN OF SPAN DETAILS - DIAPHRAGMS", SHEET 2 OF 2

BOTTOM OF OVERHANG ELEV. @ OUTSIDE EDGE OF SUPERSTR.

OVERHANG	END BENT	ELEV.
LEFT SIDE	1	733.43
RIGHT SIDE	1	732.67
LEFT SIDE	2	734.35
RIGHT SIDE	2	733.59



PLAN OF INTEGRAL END BENT

PROJECT NO. R-2707D
CLEVELAND COUNTY
 STATION: 810+00.00 -L-

SHEET 3 OF 3



STATE OF NORTH CAROLINA
 DEPARTMENT OF TRANSPORTATION
 RALEIGH
 SUPERSTRUCTURE
 TYPICAL SECTION
 DETAILS
 (RL)

DOCUMENT NOT CONSIDERED FINAL UNLESS ALL SIGNATURES COMPLETED

REVISIONS						SHEET NO.
NO.	BY:	DATE:	NO.	BY:	DATE:	S9-08
1			3			TOTAL SHEETS
2			4			30

STR. #9

Stantec Consulting Services Inc.
 801 Jones Franklin Road
 Suite 300
 Raleigh, NC 27606
 Tel. (919) 851-6866
 Fax. (919) 851-7024
 www.stantec.com
 License No. F-0672

DRAWN BY : N. D'AIUTO DATE : 04/23/18
 CHECKED BY : J.T. KELVINGTON DATE : 12/07/22
 DESIGN ENGINEER OF RECORD : J.T. KELVINGTON DATE : 04/21/23

jHagenbush

4/21/2023

c:\pvt\work\king\dms7003\A\R2707D-SMUL-TS03-2200B9.dgn