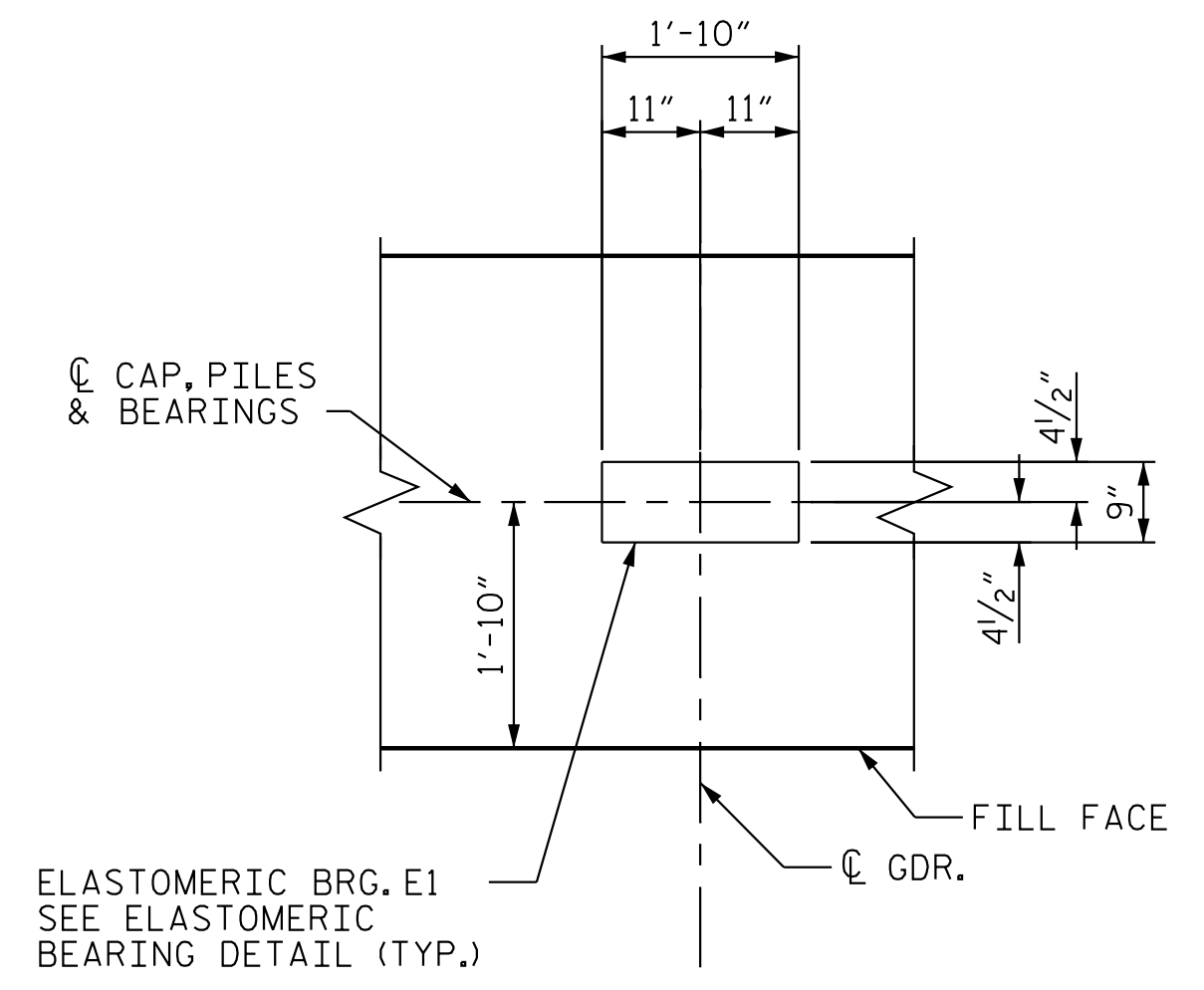
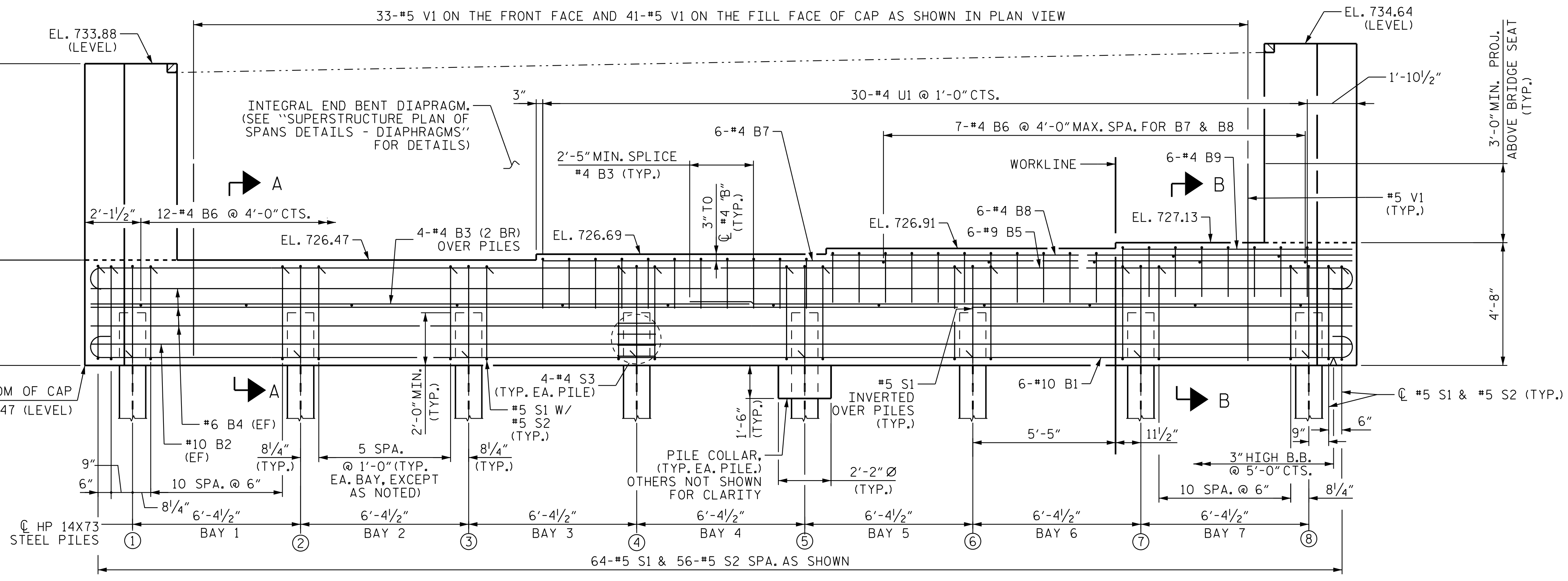


PLAN

- NOTES**
- (A) SLOPED TOP OF WING SURFACE BEYOND LIMIT OF INTEGRAL DIAPH. SEE END BENT 1 WING WALL DETAILS, SHT. 2 OF 4.
 - (EF) - DENOTES EACH FACE
 - CHAMFERS ARE NOT REQUIRED EXCEPT AS NOTED.
 - (2 BR) DENOTES 2 BAR RUN.
 - FOR SECTIONS A-A & B-B, SEE END BENT 1 DETAILS, SHT. 3 OF 4
 - FOR WING WALL DETAILS, SEE END BENT 1 DETAILS - WING WALLS, SHT. 2 OF 4



DETAIL A
DIMENSIONS TYPICAL FOR EACH BEARING



ELEVATION

PROJECT NO. R-2707D
CLEVELAND COUNTY
 STATION: 810+00.00 -L-

SHEET 1 OF 4

STATE OF NORTH CAROLINA
 DEPARTMENT OF TRANSPORTATION
 RALEIGH
 SUBSTRUCTURE
 END BENT 1
 (LL)



REVISIONS						SHEET NO. S8-20
NO.	BY:	DATE:	NO.	BY:	DATE:	
1			3			TOTAL SHEETS 30
2			4			

DOCUMENT NOT CONSIDERED FINAL UNLESS ALL SIGNATURES COMPLETED

Stantec Consulting Services Inc.
 801 Jones Franklin Road
 Suite 300
 Raleigh, NC 27606
 Tel. (919) 851-6866
 Fax. (919) 851-7024
 www.stantec.com
 License No. F-0672

DRAWN BY: N. D'AIUTO DATE: 05/09/18
 CHECKED BY: J.T. KELVINGTON DATE: 12/05/22
 DESIGN ENGINEER OF RECORD: J.T. KELVINGTON DATE: 04/21/23

4/21/2023
 4/21/2023
 jHagenbush
 4/21/2023
 4/21/2023