

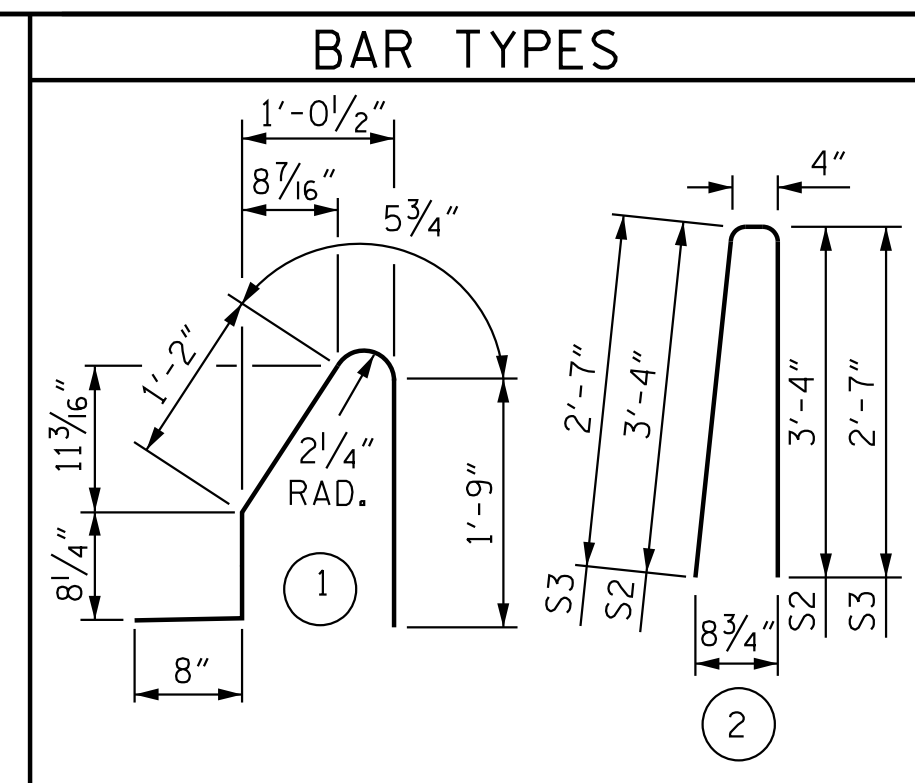
NOTES

THE BARRIER RAIL IN THE SPAN SHALL NOT BE CAST UNTIL ALL SLAB CONCRETE IN THAT SPAN HAS BEEN CAST AND HAS REACHED A MINIMUM COMPRESSIVE STRENGTH OF 3,000 PSI.

ALL REINFORCING STEEL IN BARRIER RAILS SHALL BE EPOXY COATED.

GROOVED CONTRACTION JOINTS, 1/2" IN DEPTH, SHALL BE TOOLED IN ALL EXPOSED FACES OF THE BARRIER RAIL AND IN ACCORDANCE WITH ARTICLE 825-10(B) OF THE STANDARD SPECIFICATIONS. THE CONTRACTION JOINT SHALL BE LOCATED AT EACH THIRD POINT BETWEEN BARRIER RAIL EXPANSION JOINTS. ONLY ONE CONTRACTION JOINT IS REQUIRED AT MIDPOINT OF BARRIER RAIL SEGMENTS LESS THAN 20 FEET IN LENGTH AND NO CONTRACTION JOINTS ARE REQUIRED FOR THOSE SEGMENTS LESS THAN 10 FEET IN LENGTH.

THE JOINT IN THE DECK SLAB SHALL BE SAWED PRIOR TO CASTING OF THE BARRIER RAIL.

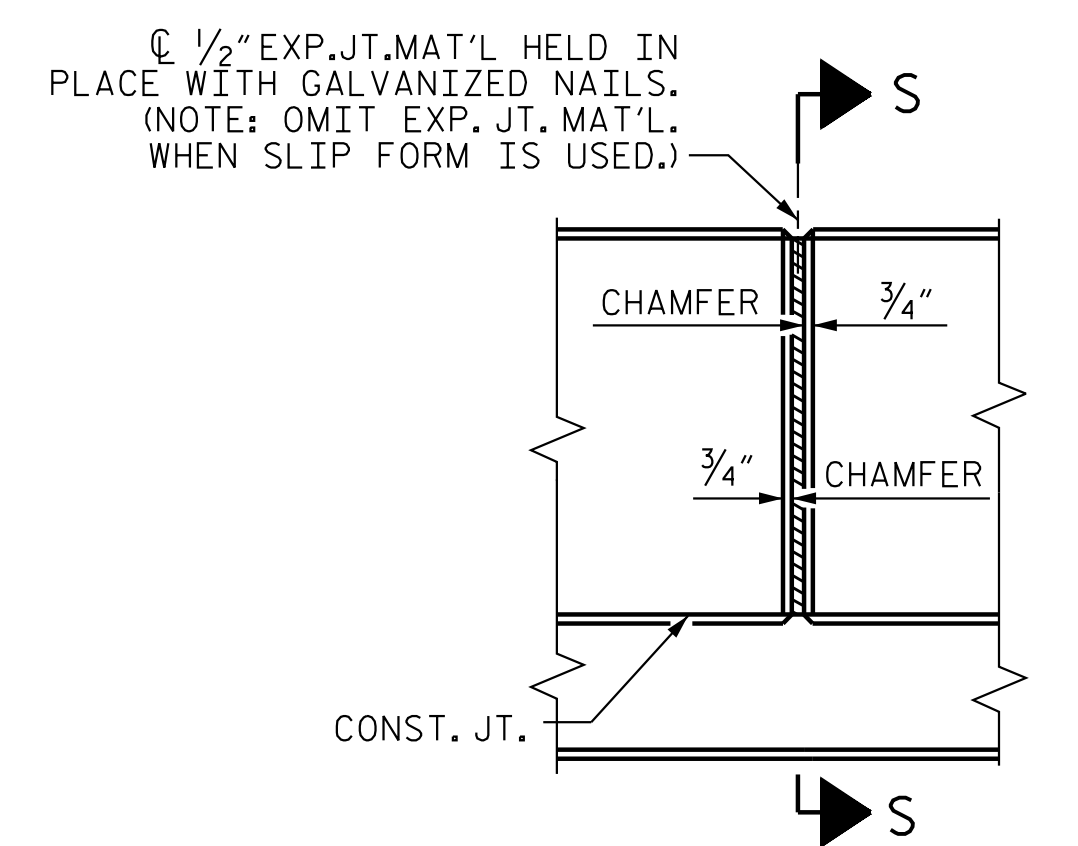


BILL OF MATERIAL

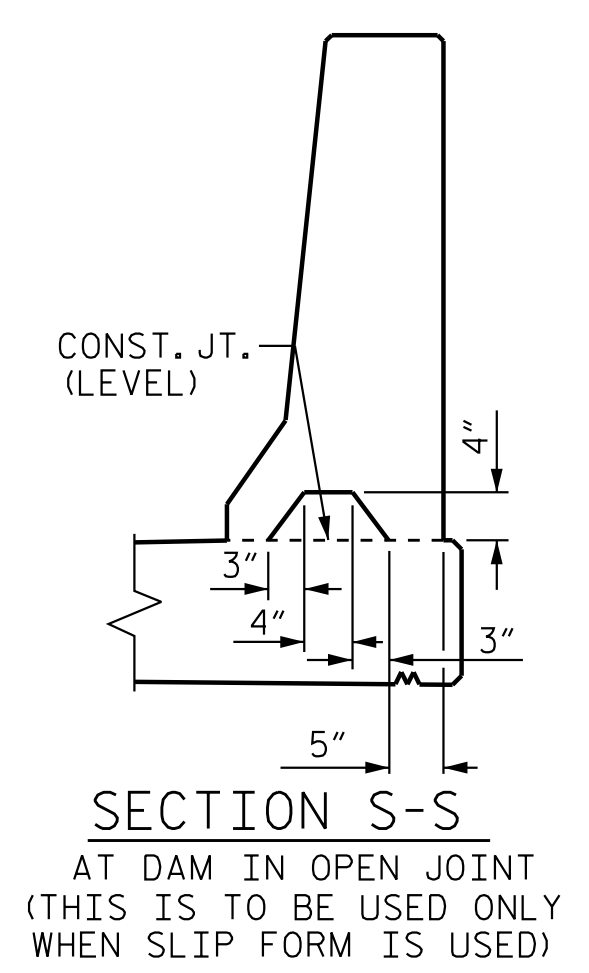
FOR CONCRETE BARRIER RAIL ONLY

BAR	NO.	SIZE	TYPE	LENGTH	WEIGHT
* B1	44	#5	STR	29'-7"	1358
* B2	44	#5	STR	28'-7"	1312
* S1	240	#5	1	4'-9"	1189
* S2	232	#5	2	7'-0"	1694
* S3	8	#5	2	5'-6"	46

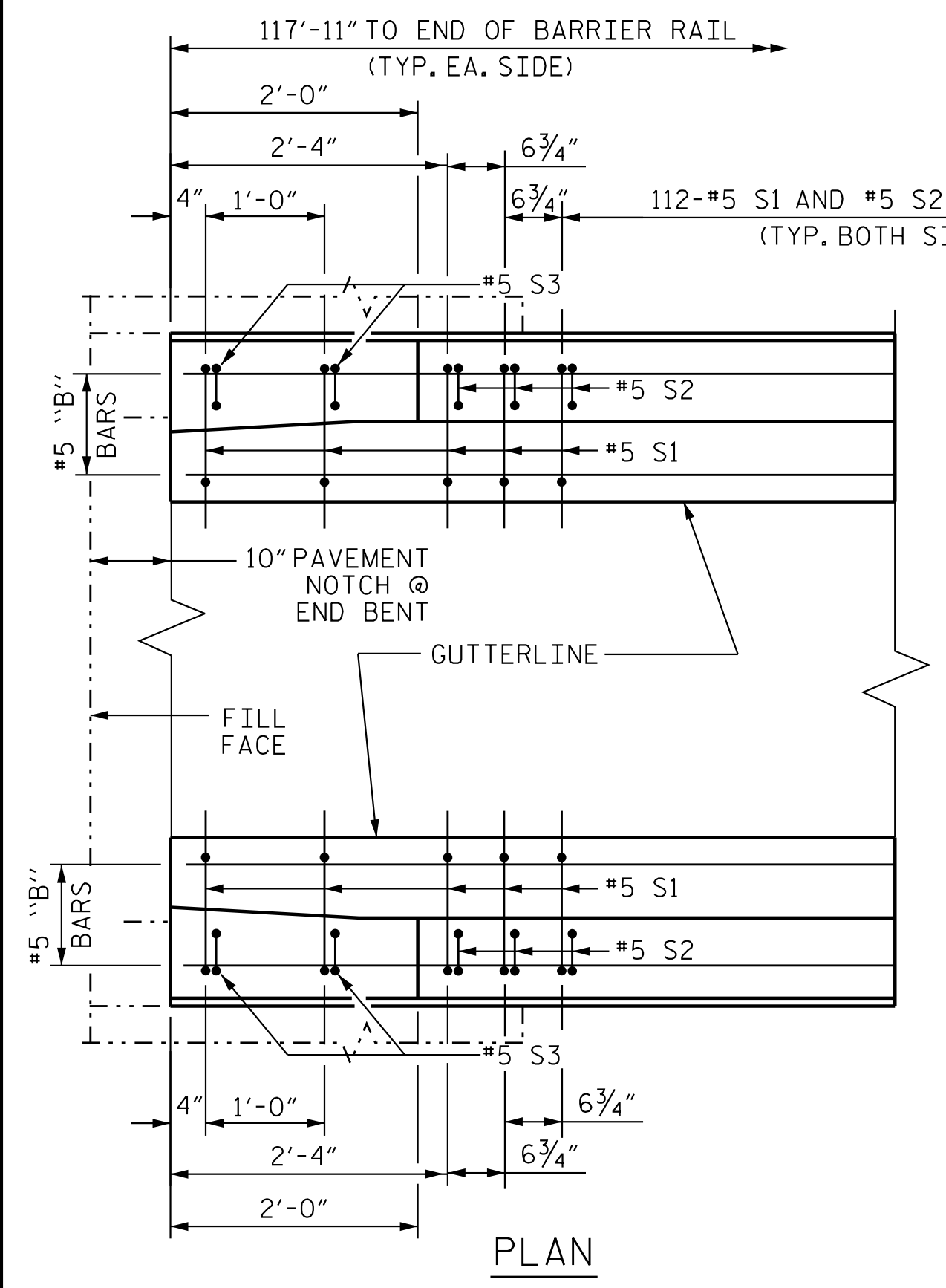
* EPOXY COATED REINFORCING STEEL 5,599 LBS.
 CLASS AA CONCRETE 32.0 CU. YDS.
 CONCRETE BARRIER RAIL 235.83 LIN. FT.



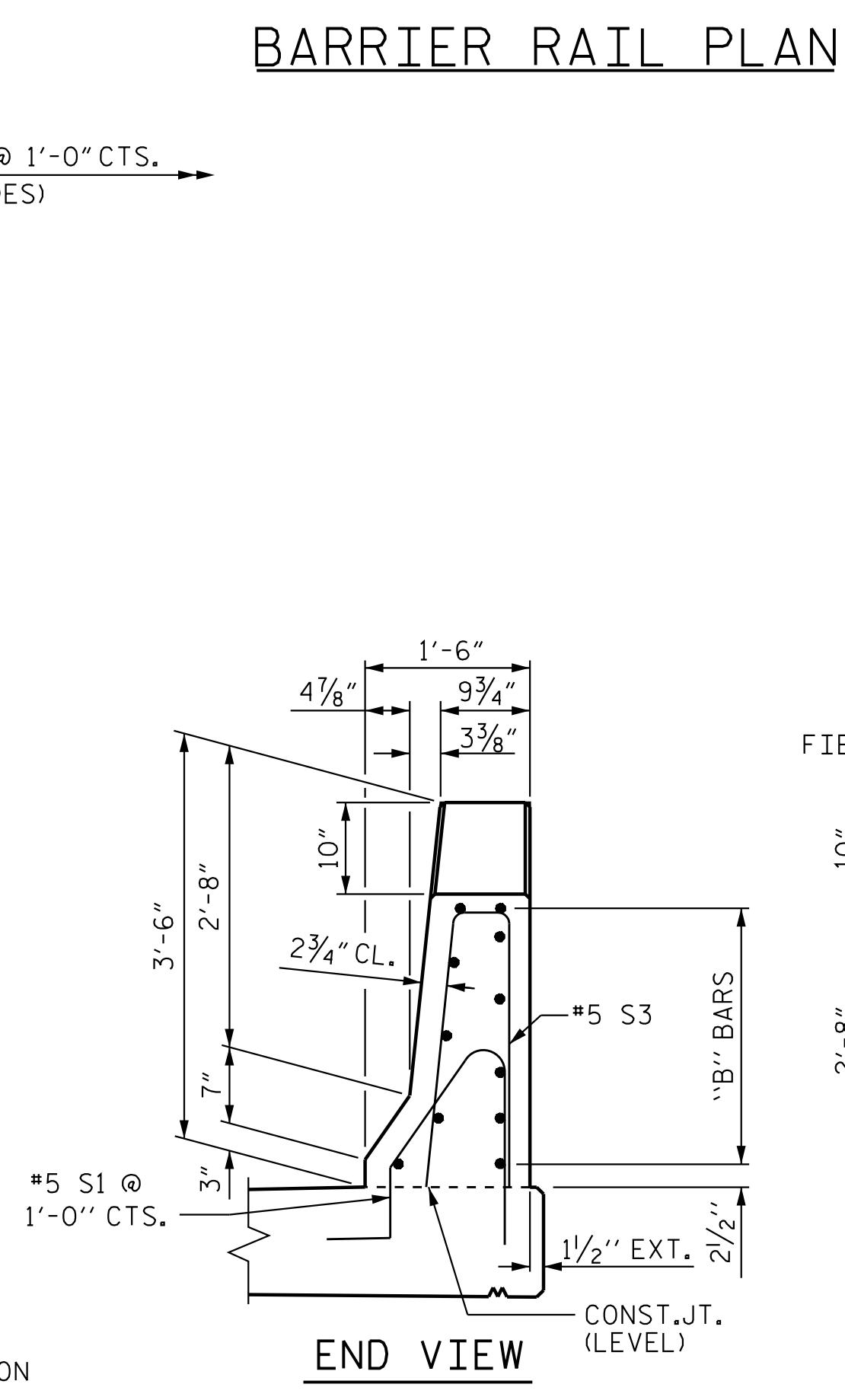
ELEVATION AT EXPANSION JOINTS
BARRIER RAIL DETAILS



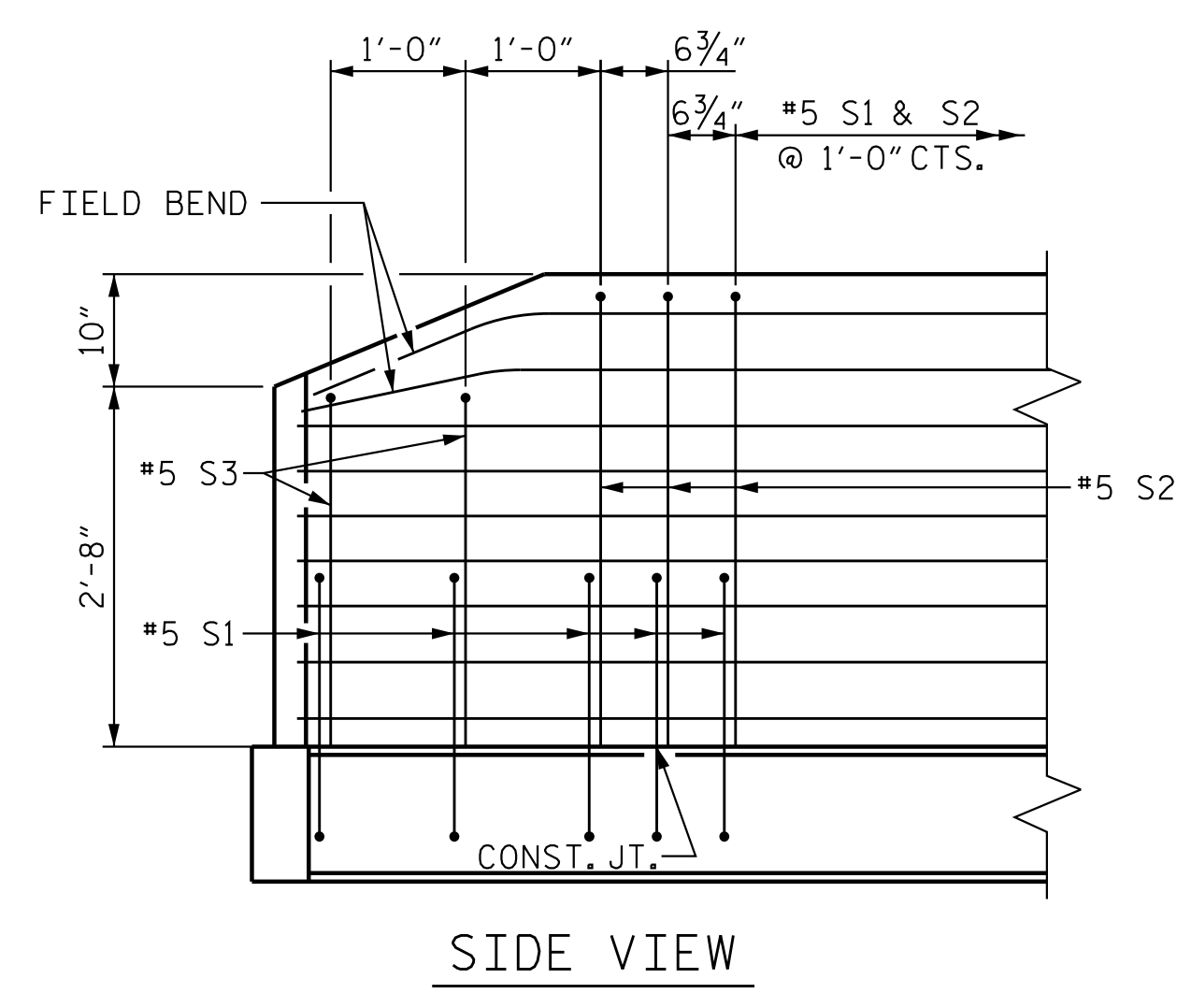
SECTION S-S
AT DAM IN OPEN JOINT
(THIS IS TO BE USED ONLY WHEN SLIP FORM IS USED)



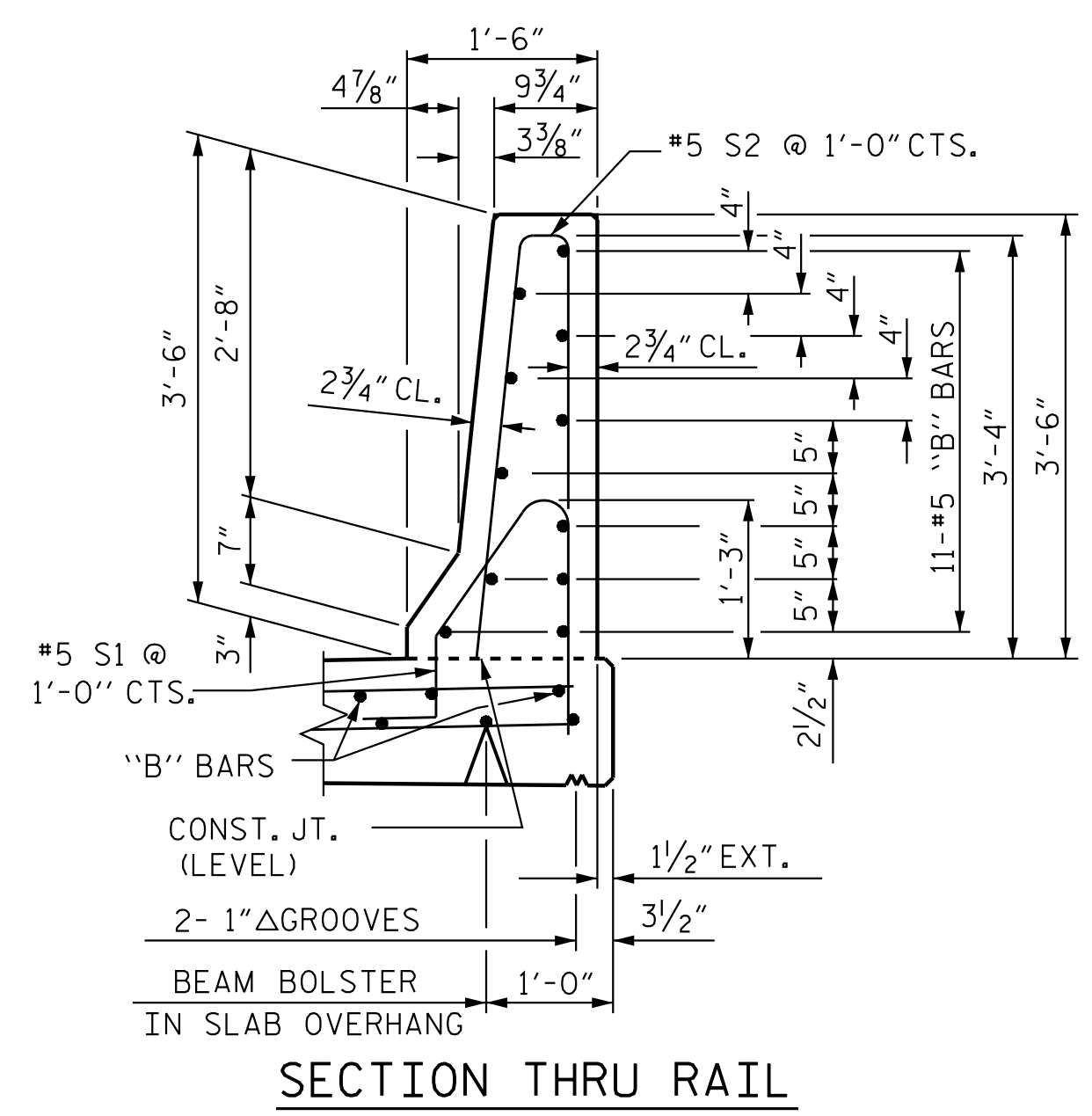
DETAIL @ END BENT
END BENT 1 SHOWN END BENT 2 TYP. BY ROTATION



END OF RAIL DETAILS



SIDE VIEW



SECTION THRU RAIL

PROJECT NO. R-2707D
 CLEVELAND COUNTY
 STATION: 810+00.00 -L-



STATE OF NORTH CAROLINA
 DEPARTMENT OF TRANSPORTATION
 RALEIGH
 STANDARD
 CONCRETE
 BARRIER RAIL
 (LL)

REVISIONS						SHEET NO. SB-17
NO.	BY:	DATE:	NO.	BY:	DATE:	
1			3			TOTAL SHEETS 30
2			4			

DOCUMENT NOT CONSIDERED FINAL UNLESS ALL SIGNATURES COMPLETED

Stantec Consulting Services Inc.
 801 Jones Franklin Road
 Suite 300
 Raleigh, NC 27606
 Tel. (919) 851-6866
 Fax. (919) 851-7024
 www.stantec.com
 License No. F-0672

ASSEMBLED BY : N. D'AIUTO DATE : 05/01/18
 CHECKED BY : J.T. KELVINGTON DATE : 12/05/22
 DRAWN BY : ARB 5/87
 CHECKED BY : SJD 9/87
 REV. 7/12
 REV. 6/13
 REV. 12/17
 MAA/GM
 MAA/GM
 MAA/GM
 DESIGN ENGINEER
 OF RECORD: J.T. KELVINGTON DATE : 04/21/23