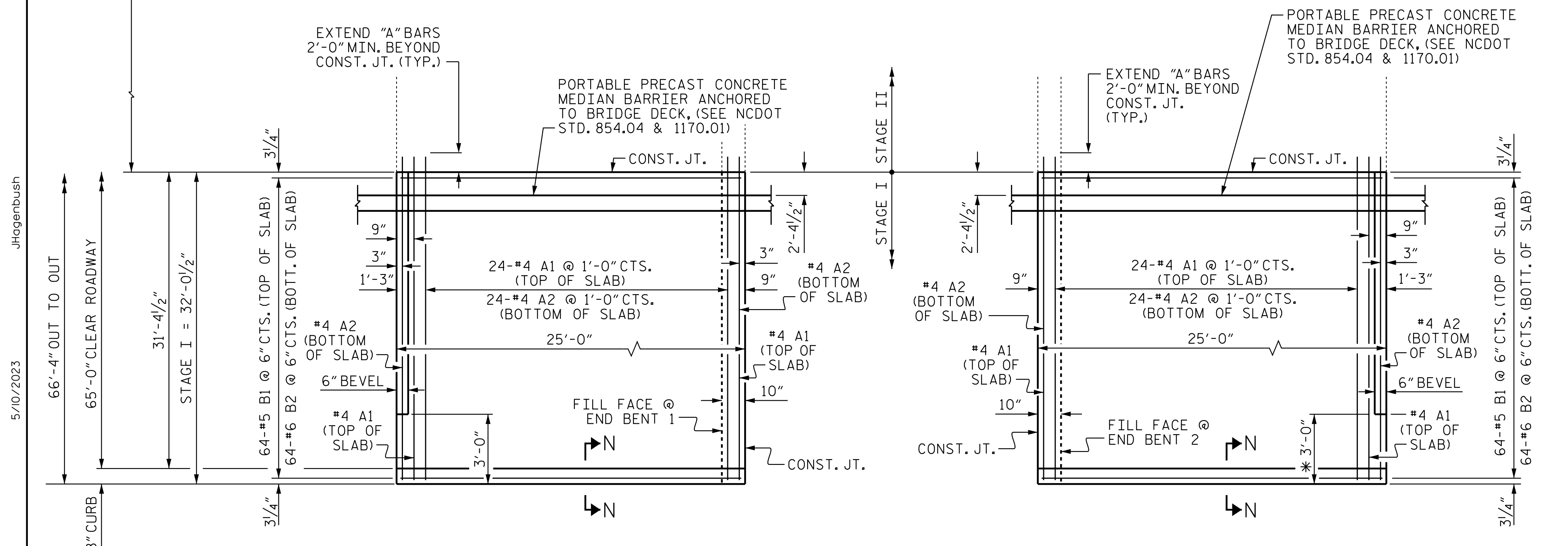


PLAN @ END BENT 1
STAGE II

PLAN @ END BENT 2
STAGE II

DIMENSIONS SHOWN ARE TYPICAL FOR BOTH APPROACH SLABS
* TO MATCH SHOULDER BERM GUTTER @ END BENT. SEE ROADWAY PLANS.



PLAN @ END BENT 1
STAGE I

PLAN @ END BENT 2
STAGE I

DIMENSIONS SHOWN ARE TYPICAL FOR BOTH APPROACH SLABS
* TO MATCH SHOULDER BERM GUTTER @ END BENT. SEE ROADWAY PLANS.

NOTES

- APPROACH SLAB SHALL NOT BE CONSTRUCTED PRIOR TO COMPLETION OF THE BRIDGE DECK.
- FOR BRIDGE APPROACH FILL INCLUDING GEOTEXTILE, 6" Ø DRAINAGE PIPE, AND SELECT MATERIAL, SEE ROADWAY PLANS.
- GEOTEXTILE SHALL BE TYPE 1 IN ACCORDANCE WITH THE STANDARD SPECIFICATIONS SECTION 1056.
- SELECT MATERIAL BACKFILL (CLASS V OR CLASS VI) SHALL BE IN ACCORDANCE WITH STANDARD SPECIFICATIONS SECTION 1016.
- SELECT MATERIAL BACKFILL IS TO BE CONTINUOUS ALONG FILL FACE OF BACKWALL FROM OUTSIDE EDGE TO OUTSIDE EDGE OF APPROACH SLAB.
- FOR THE 6" Ø DRAINAGE PIPE OUTLET(S), SEE ROADWAY STANDARD DRAWINGS.
- AREA BETWEEN THE WINGWALL AND APPROACH SLAB SHALL BE GRADED TO DRAIN THE WATER AWAY FROM THE FILL FACE OF THE BRIDGE AND SHALL BE PAVED. SEE ROADWAY PLANS.
- THE JOINT OPENING AT THE APPROACH SLAB/DECK INTERFACE SHALL BE SAWED NO MORE THAN 12 HOURS AFTER THE APPROACH SLAB IS CAST. THE JOINT SHALL BE CLEANED OF ALL DEBRIS BEFORE THE SEALANT IS APPLIED. THE JOINT SEALER MATERIAL SHALL CONFORM TO THE REQUIREMENTS OF SECTION 1028-3 OF THE STANDARD SPECIFICATIONS.
- AT THE CONTRACTORS OPTION, "TYPE A - ALTERNATE APPROACH FILL" IN LIEU OF "TYPE I - STANDARD APPROACH FILL" MAY BE CONSTRUCTED AT NO ADDITIONAL COST TO THE DEPARTMENT. SEE SHEET 3 OF 3 FOR DETAILS AND NOTES.

STAGE I
BILL OF MATERIAL

FOR ONE APPROACH SLAB
(2 REQ'D)

BAR	NO.	SIZE	TYPE	LENGTH	WEIGHT
* A1	26	#4	STR	33'-11"	589
A2	26	#4	STR	33'-11"	589
* B1	64	#5	STR	24'-1"	1608
B2	64	#6	STR	24'-7"	2364
REINFORCING STEEL					LBS. 2,953
* EPOXY COATED REINFORCING STEEL					LBS. 2,197
CLASS AA CONCRETE					C. Y. 34.6

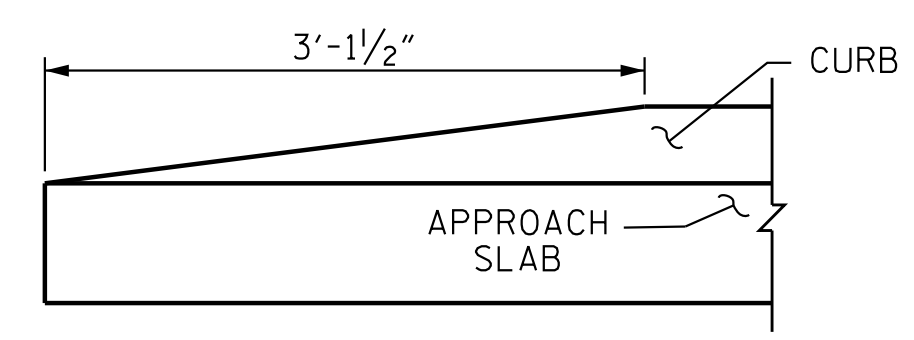
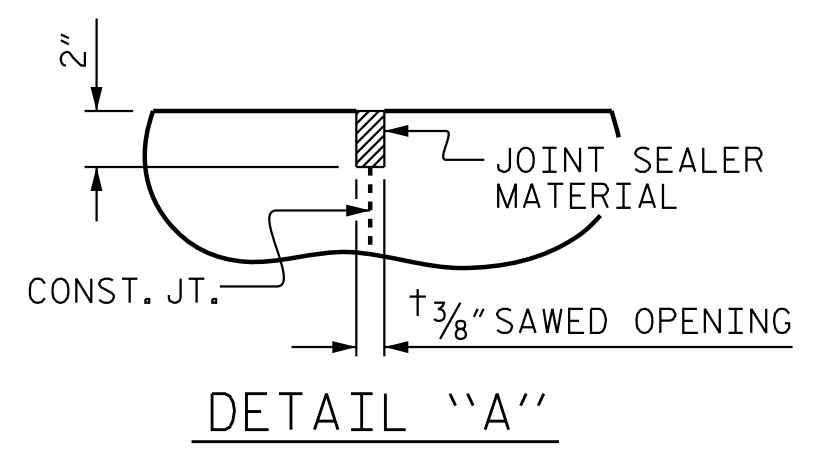
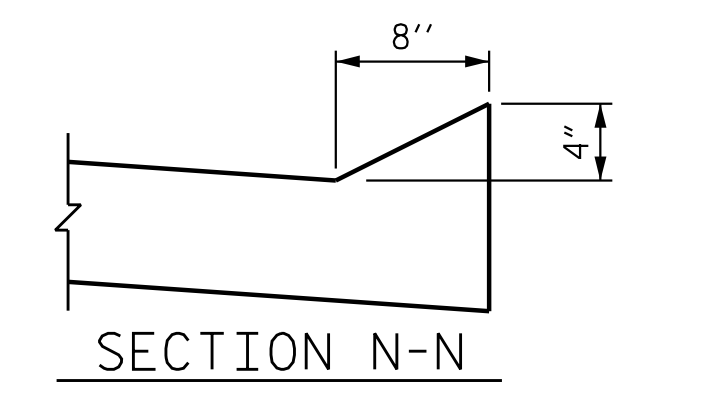
STAGE II
BILL OF MATERIAL

FOR ONE APPROACH SLAB
(2 REQ'D)

BAR	NO.	SIZE	TYPE	LENGTH	WEIGHT
* A3	26	#4	STR	33'-10"	588
A4	26	#4	STR	33'-10"	588
* B1	68	#5	STR	24'-1"	1709
B2	68	#6	STR	24'-7"	2511
REINFORCING STEEL					LBS. 3,099
* EPOXY COATED REINFORCING STEEL					LBS. 2,297
CLASS AA CONCRETE					C. Y. 37.0

SPLICE LENGTHS

BAR SIZE	EPOXY COATED	UNCOATED
#4	1'-11"	1'-7"
#5	2'-5"	2'-0"
#6	3'-7"	2'-5"



END OF CURB WITHOUT SHOULDER BERM GUTTER

PROJECT NO. R-2707D
CLEVELAND COUNTY
STATION: 849+00.00 -L-

SHEET 1 OF 3

STATE OF NORTH CAROLINA
DEPARTMENT OF TRANSPORTATION
RALEIGH

BRIDGE APPROACH SLAB
FOR INTEGRAL ABUTMENT
WITH FLEXIBLE PAVEMENT
(RIGHT LANE)



DOCUMENT NOT CONSIDERED FINAL UNLESS ALL SIGNATURES COMPLETED

REVISIONS						SHEET NO.
NO.	BY:	DATE:	NO.	BY:	DATE:	S6-54
1			3			TOTAL SHEETS
2			4			56

Stantec Consulting Services Inc.
801 Jones Franklin Road
Suite 300
Raleigh, NC 27606
Tel. (919) 851-6866
Fax. (919) 851-7024
www.stantec.com
License No. F-0672

ASSEMBLED BY: J.B. GEILE DATE: 01/23/23
CHECKED BY: S.S. POOLE DATE: 01/25/23
DRAWN BY: TLA 10/05
CHECKED BY: GM 5/06

DESIGN ENGINEER OF RECORD: S.S. POOLE DATE: 05/10/23