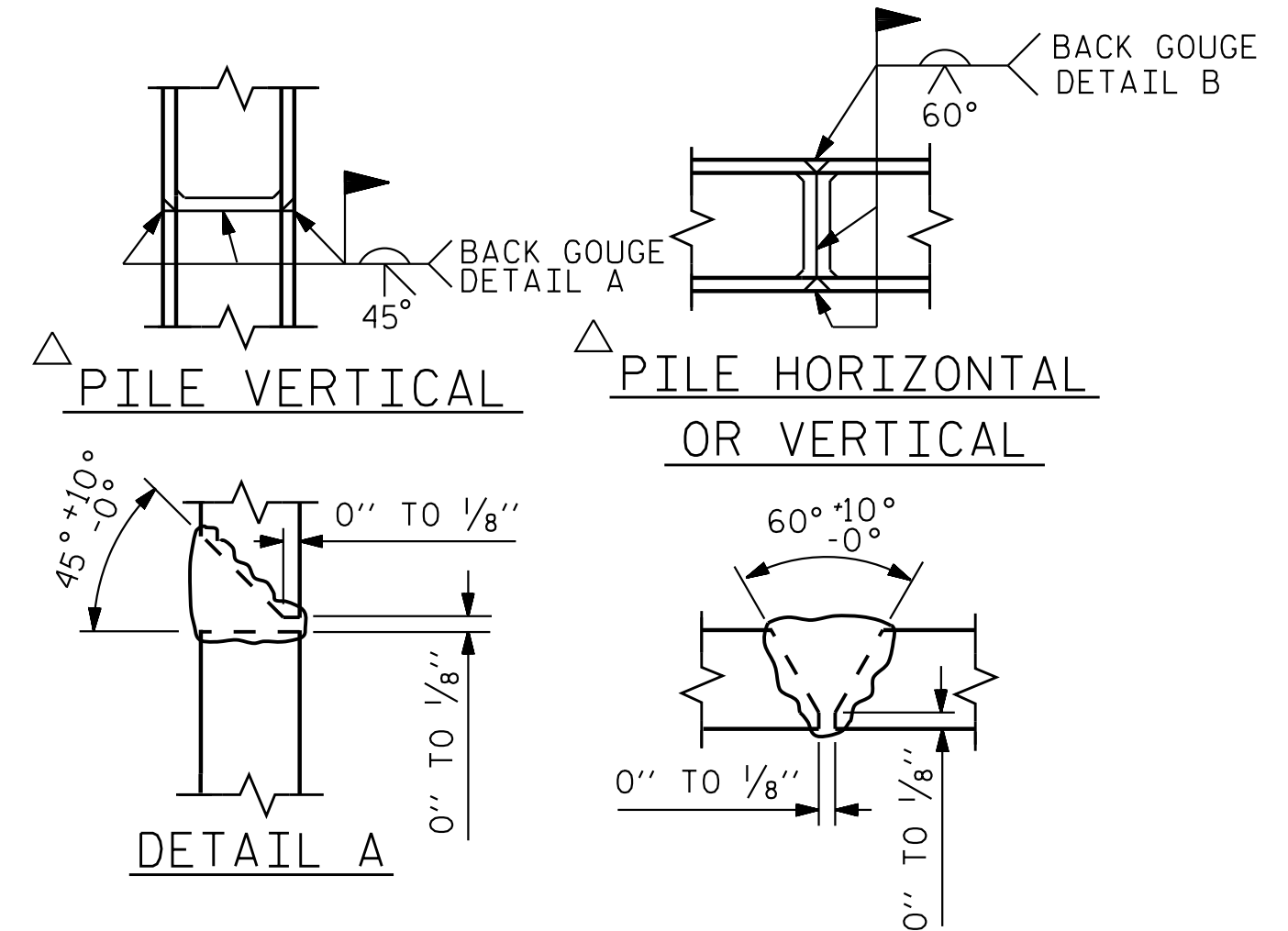


BAGGED STONE AND PIPE SHALL BE PLACED IMMEDIATELY AFTER COMPLETION OF END BENT EXCAVATION. PIPE MAY BE EITHER CONCRETE, CORRUGATED STEEL, CORRUGATED ALUMINUM ALLOY, OR CORRUGATED PLASTIC. PERFORATED PIPE WILL NOT BE ALLOWED.

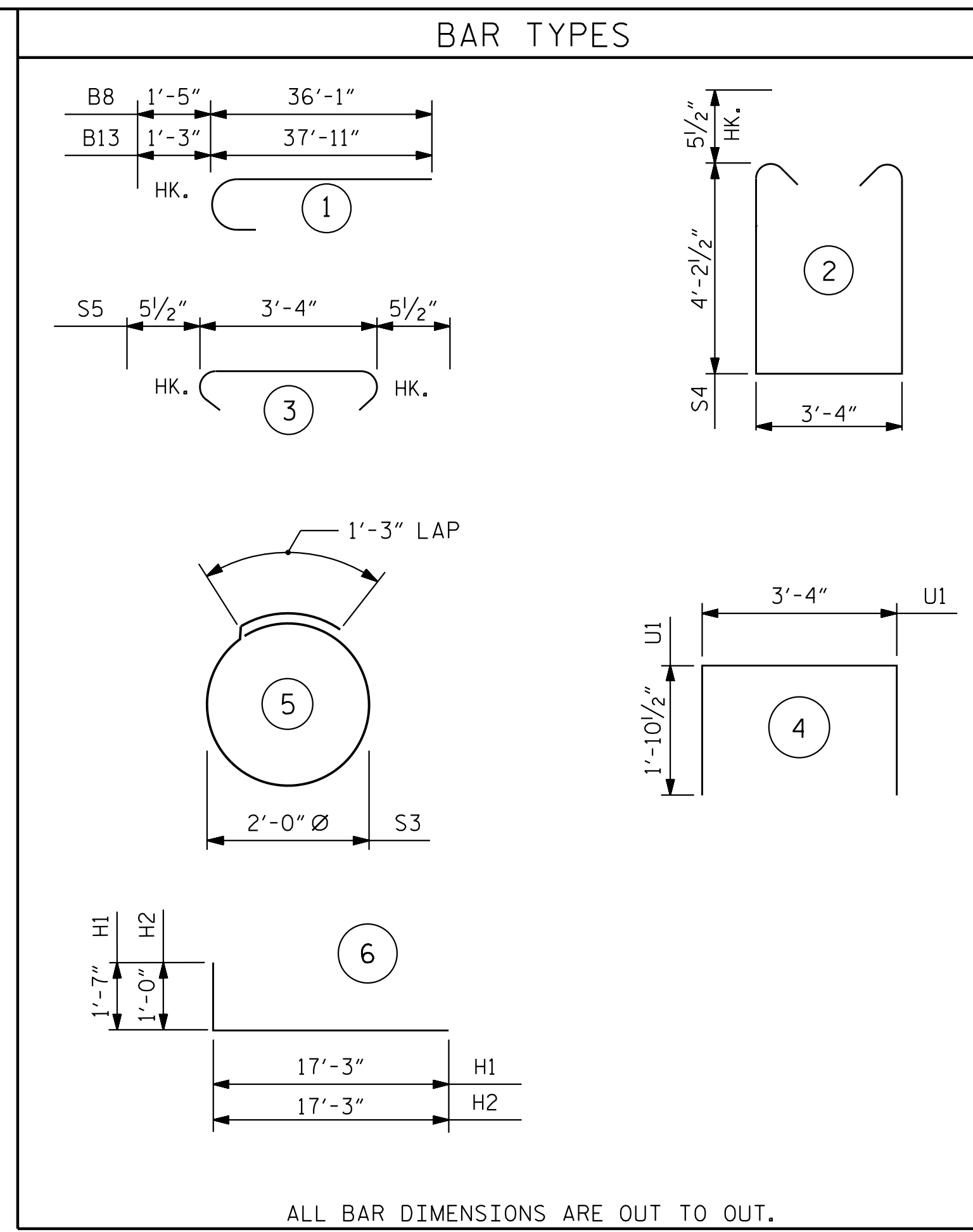
BAGGED STONE SHALL REMAIN IN PLACE UNTIL THE ENGINEER DIRECTS THAT IT BE REMOVED. THE CONTRACTOR SHALL REMOVE AND DISPOSE OF SILT ACCUMULATIONS AT BAGGED STONE WHEN SO DIRECTED BY THE ENGINEER. BAGS SHALL BE REMOVED AND REPLACED WHENEVER THE ENGINEER DETERMINES THAT THEY HAVE DETERIORATED AND LOST THEIR EFFECTIVENESS.

NO SEPARATE PAYMENT WILL BE MADE FOR THIS WORK AND THE ENTIRE COST OF THIS WORK SHALL BE INCLUDED IN THE UNIT CONTRACT PRICE BID FOR THE SEVERAL PAY ITEMS.

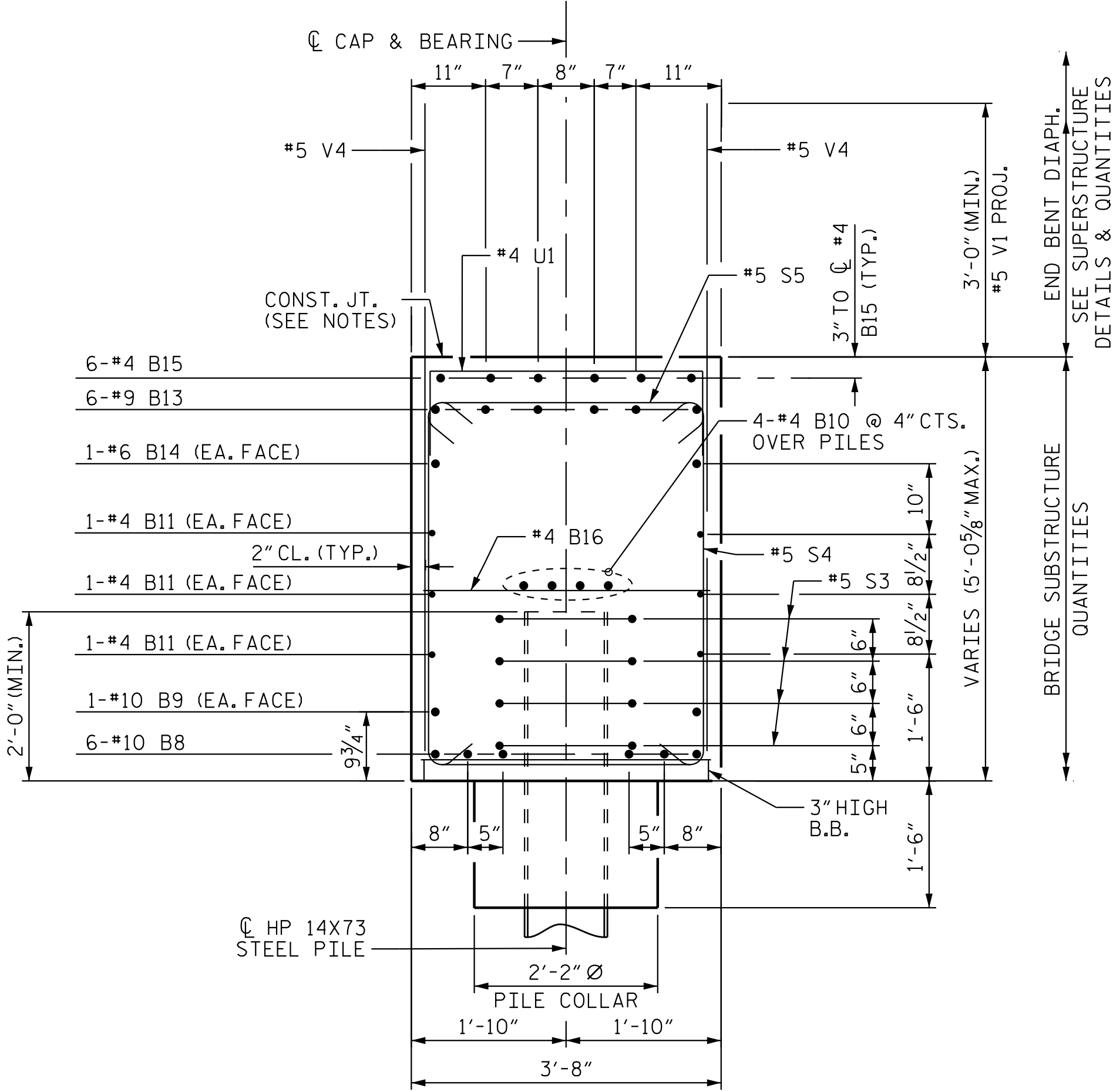
**TEMPORARY DRAINAGE AT END BENT**



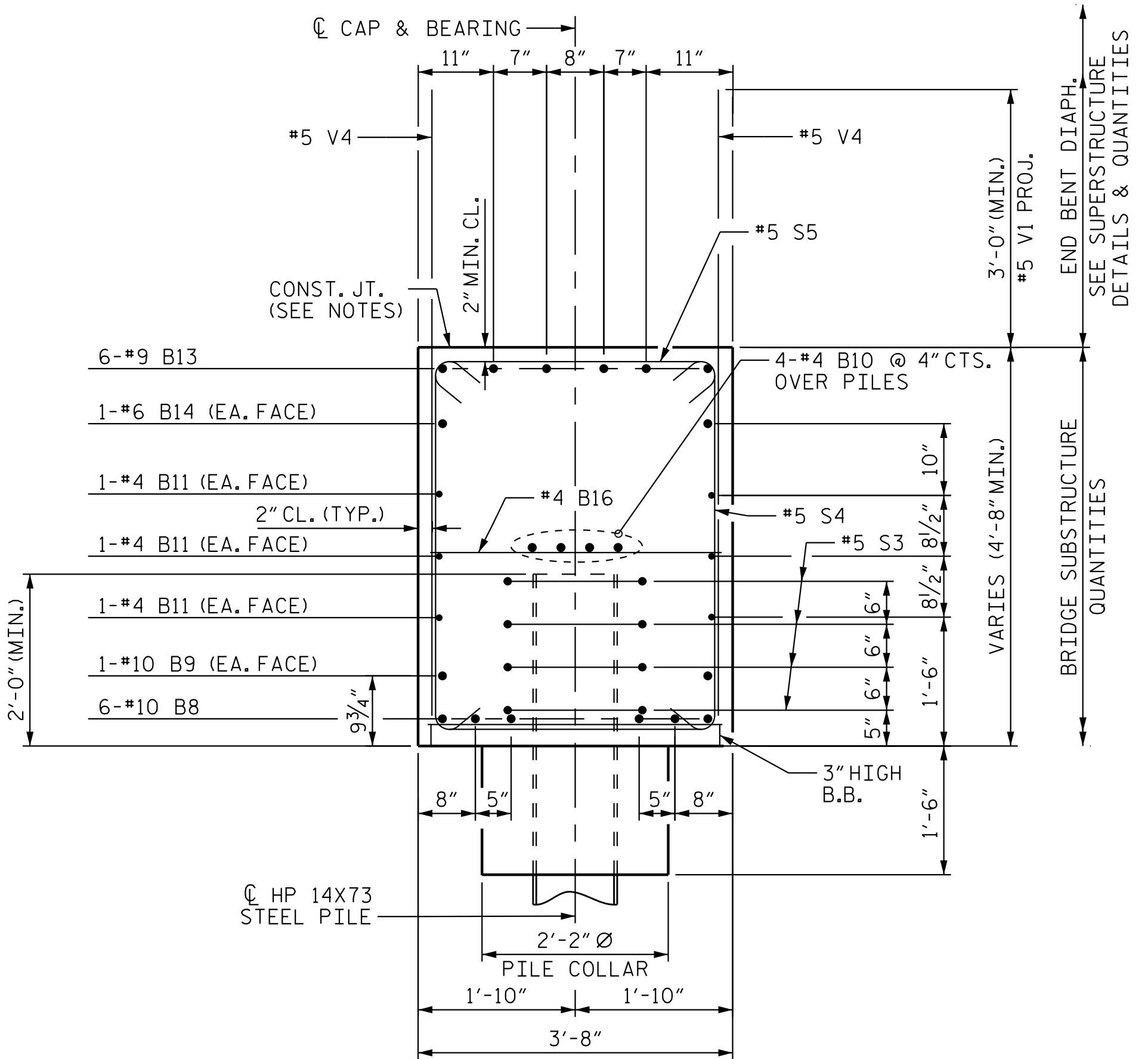
**PILE SPLICE DETAILS**



BILL OF MATERIAL					
END BENT 2 - STAGE II					
BAR NO.	SIZE	TYPE	LENGTH	WEIGHT	
B8	6	#10	1	37'-6"	969
B9	2	#10	STR	37'-1"	320
B10	4	#4	STR	37'-11"	102
B11	6	#4	STR	37'-11"	152
B12	6	#9	STR	4'-2"	85
B13	6	#9	1	39'-2"	799
B14	2	#6	STR	35'-6"	107
B15	6	#4	STR	8'-6"	35
B16	10	#4	STR	3'-4"	23
H1	28	#7	6	18'-10"	1001
H2	28	#7	6	18'-3"	970
K1	4	#4	STR	2'-3"	7
K2	14	#4	STR	5'-4"	50
S3	24	#4	5	7'-7"	122
S4	41	#5	2	12'-8"	542
S5	35	#5	3	4'-3"	156
U1	6	#4	4	7'-1"	29
V2	39	#5	STR	11'-8"	475
V4	57	#5	STR	7'-9"	461
REINFORCING STEEL					LBS. 6,405
CLASS A CONCRETE BREAKDOWN:					
POUR#3: CAP, COLLARS, & WINGS					C.Y. 29.1
POUR#4: UPPER WINGS					C.Y. 6.9
CLASS A CONCRETE TOTAL					C.Y. 36.0



**SECTION C-C**  
SEE "END BENT 2", SHEET 2 OF 5.



**SECTION D-D**  
SEE "END BENT 2", SHEET 2 OF 5.

**NOTES**

TOP SURFACE AREAS OF THE END BENT CAP SHALL BE KEPT CLEAN AND FREE OF LAITANCE.

ROUGH FLOAT AND ROUGHEN THE TOP OF THE END BENT CAP UNDER END BENT DIAPHRAGM TO PROVIDE MIN. SURFACE AMPLITUDE OF 1/4", EXCEPT UNDER BEARING AREAS.

PROJECT NO. R-2707D

CLEVELAND COUNTY

STATION: 849+00.00 -L-

SHEET 5 OF 5

STATE OF NORTH CAROLINA  
DEPARTMENT OF TRANSPORTATION  
RALEIGH

**SUBSTRUCTURE**

**END BENT 2 DETAILS (STAGE II)**

**(RIGHT LANE)**



DOCUMENT NOT CONSIDERED FINAL UNLESS ALL SIGNATURES COMPLETED

REVISIONS						SHEET NO.
NO.	BY:	DATE:	NO.	BY:	DATE:	S6-52
1			3			TOTAL SHEETS
2			4			56

Stantec Consulting Services Inc.  
801 Jones Franklin Road  
Suite 300  
Raleigh, NC 27606  
Tel. (919) 851-6866  
Fax. (919) 851-7024  
www.stantec.com  
License No. F-0672

DRAWN BY: J. B. GEILE DATE: 01/08/23 DESIGN ENGINEER OF RECORD: S. S. POOLE DATE: 05/10/23

CHECKED BY: S. S. POOLE DATE: 01/10/23

5/10/2023 jHogenbush c:\pvt\work\king\csm\55490\R2707D\_SMLL\_E205\_220101.dgn