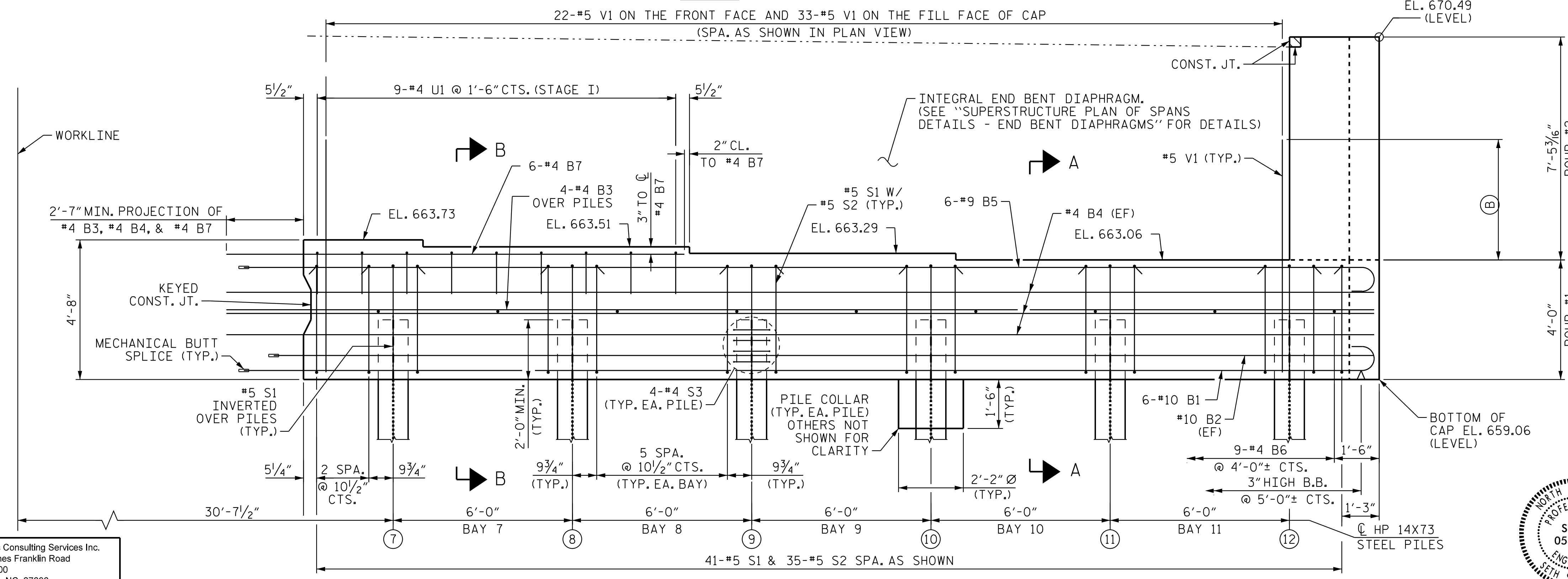


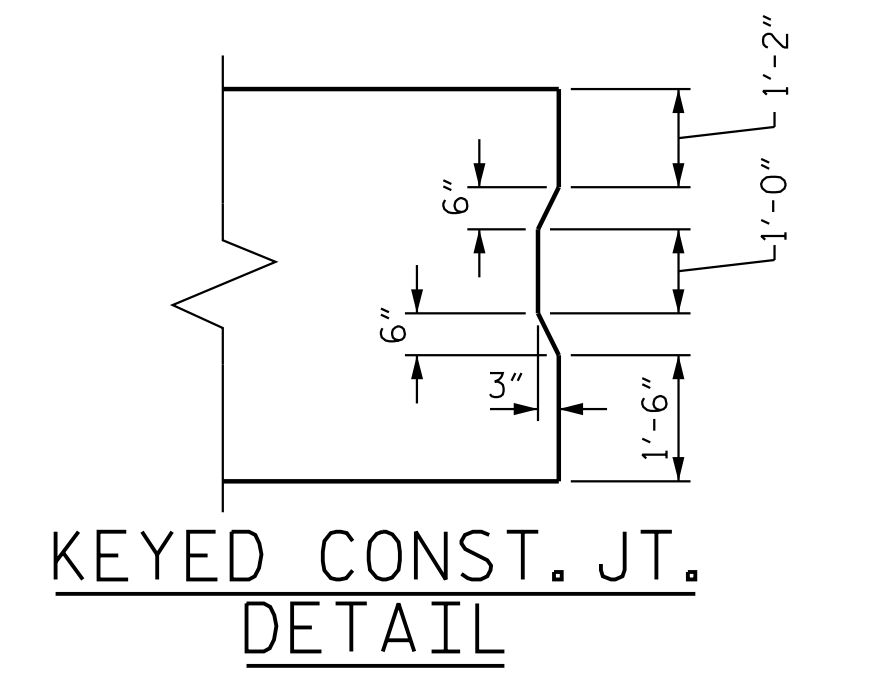
PLAN



ELEVATION

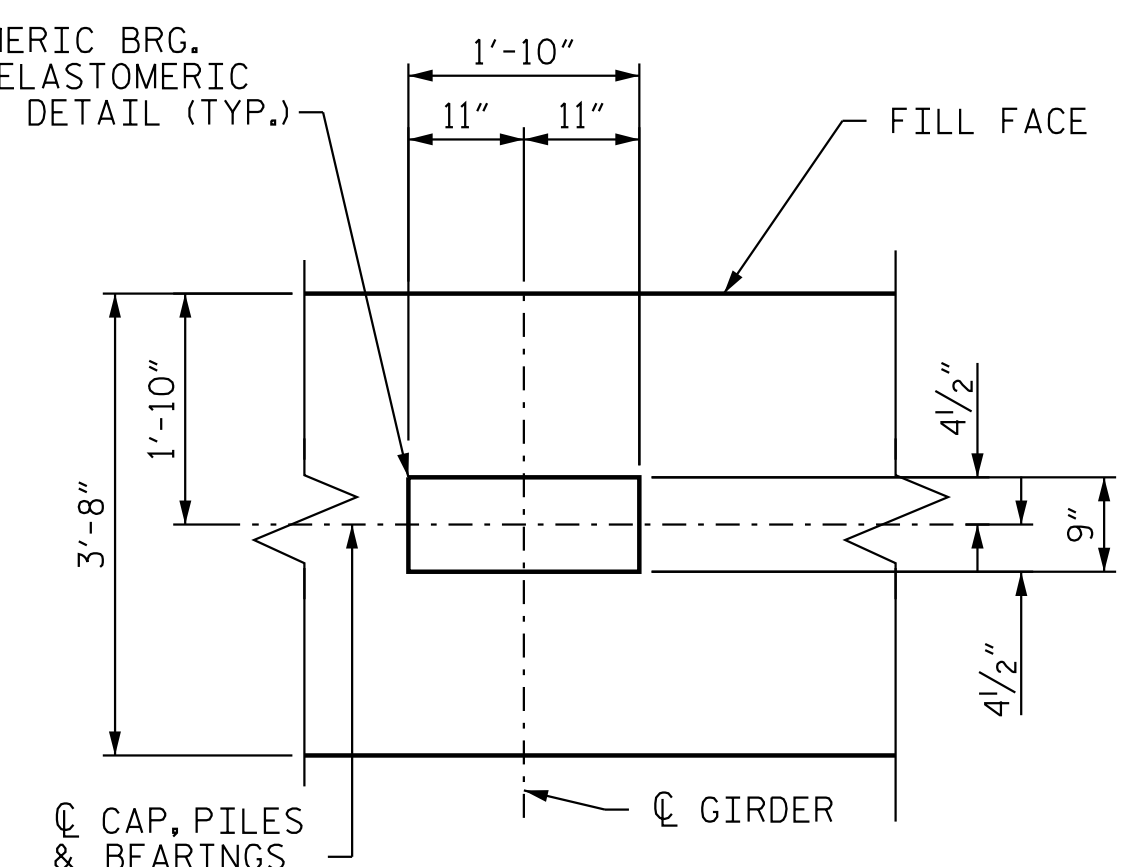
NOTES

- FOR WING WALL DETAILS, SEE 'END BENT 2, DETAILS - WING WALLS' SHEET. 3 OF 5.
- (EF) DENOTES EACH FACE
- CHAMFERS ARE NOT REQUIRED EXCEPT AS NOTED.
- FOR SECTIONS A-A AND B-B, SEE END BENT 2 DETAILS, SHEET 4 OF 5.
- (A) SLOPED CAP SURFACE BEYOND LIMIT OF INTEGRAL DIAPH. SEE END BENT 2 WING WALL DETAILED, SHEET. 3 OF 5.
- (B) #5 V1 3'-0" MIN. PROJ. ABOVE BRIDGE SEAT



KEYED CONST. JT. DETAIL

REINFORCING STEEL NOT SHOWN FOR CLARITY. REINFORCING STEEL SHALL BE CONTINUOUS THROUGH KEYED CONSTRUCTION JOINT.



DETAIL A

DIMENSIONS TYPICAL FOR EACH BEARING

PROJECT NO. R-2707D
 CLEVELAND COUNTY
 STATION: 849+00.00 -L-

SHEET 1 OF 5

STATE OF NORTH CAROLINA
 DEPARTMENT OF TRANSPORTATION
 RALEIGH
 SUBSTRUCTURE
 END BENT 2 (STAGE I)
 (RIGHT LANE)



DOCUMENT NOT CONSIDERED FINAL UNLESS ALL SIGNATURES COMPLETED

REVISIONS						SHEET NO.	
NO.	BY:	DATE:	NO.	BY:	DATE:	S6-48	
1			3			TOTAL SHEETS	56
2			4				

Stantec Consulting Services Inc.
 801 Jones Franklin Road
 Suite 300
 Raleigh, NC 27606
 Tel. (919) 851-6866
 Fax. (919) 851-7024
 www.stantec.com
 License No. F-0672

DRAWN BY: J. B. GEILE DATE: 01/08/23
 CHECKED BY: S.S. POOLE DATE: 01/10/23
 DESIGN ENGINEER OF RECORD: S.S. POOLE DATE: 05/10/23

5/10/2023 jHogenbush