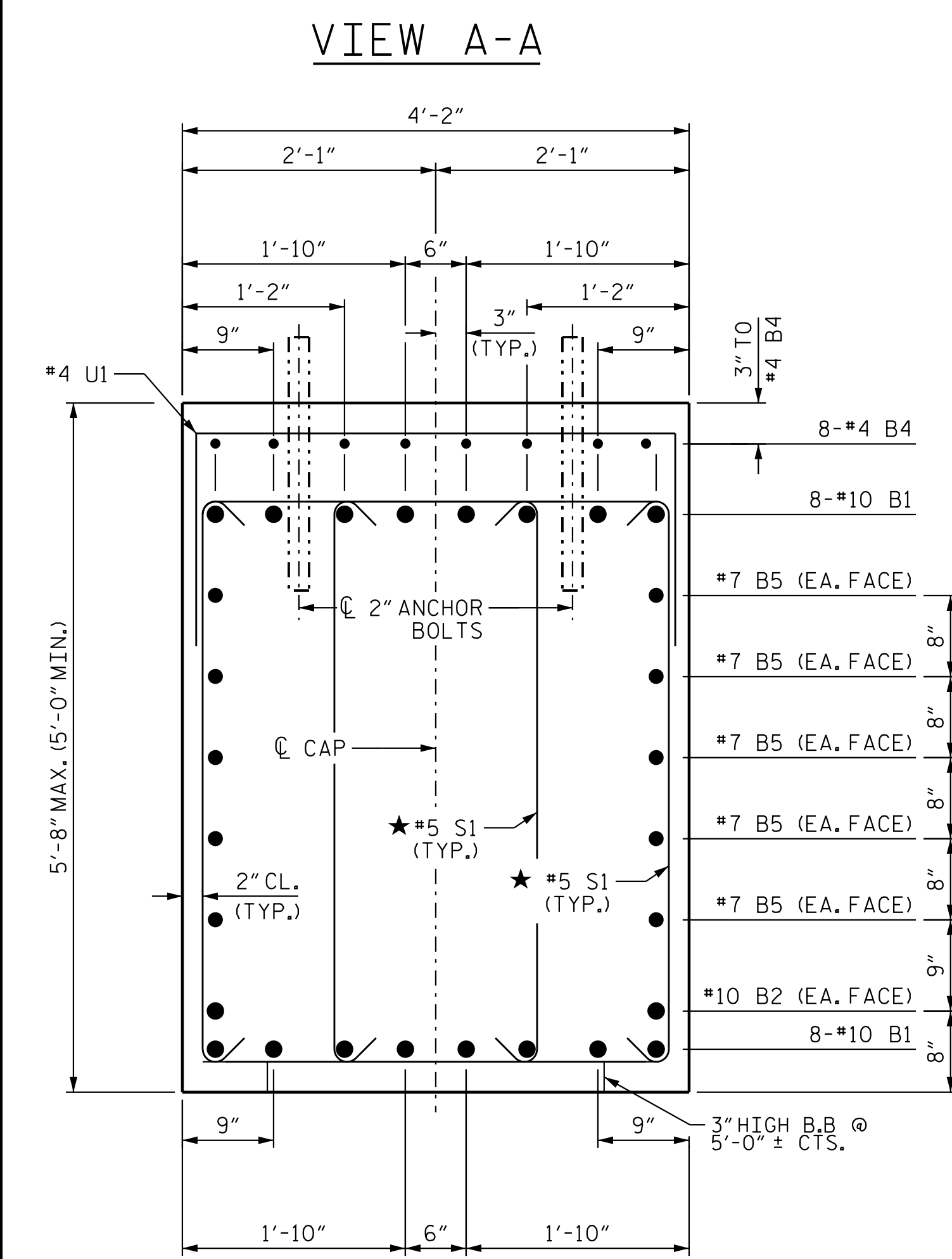
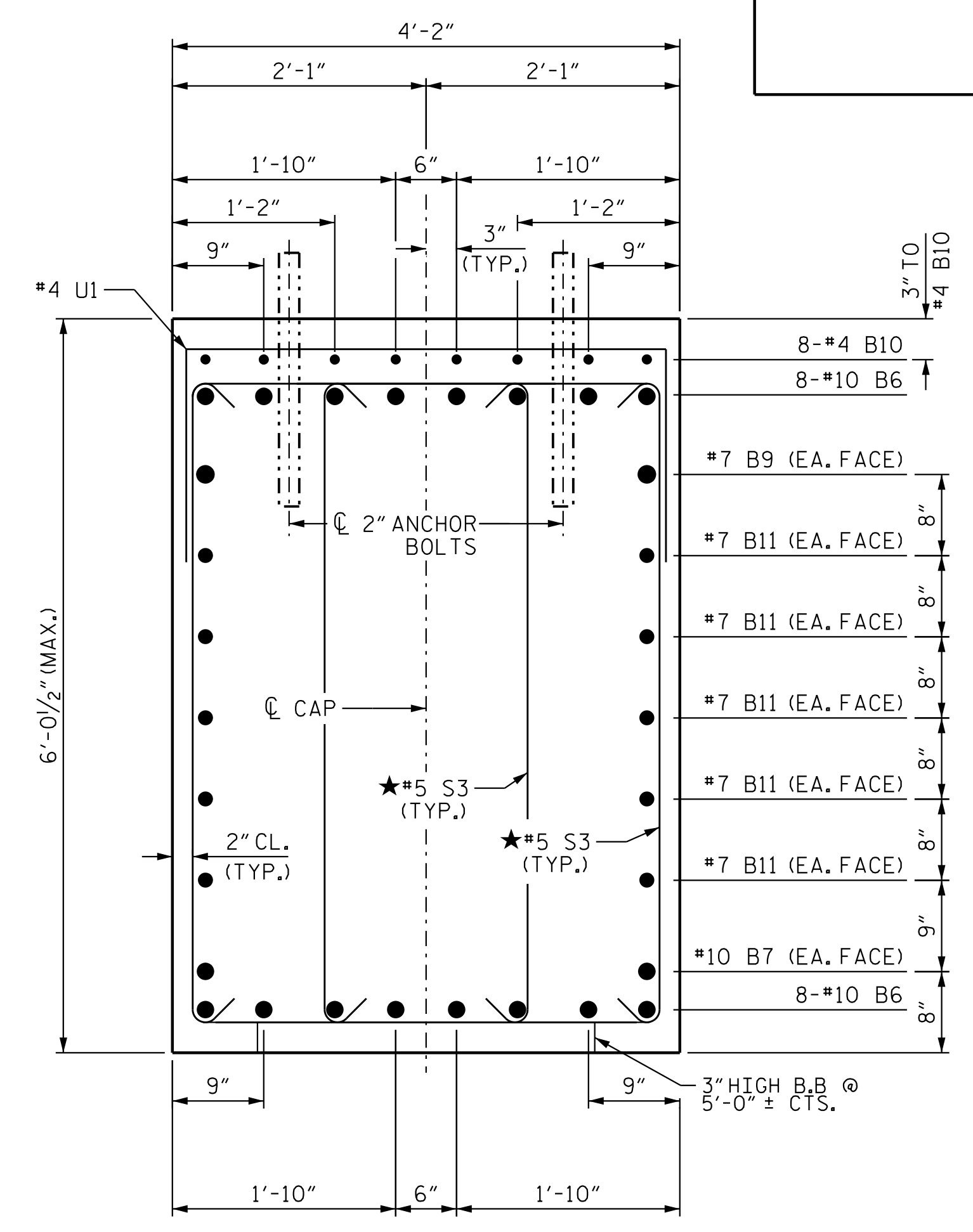


BENT 2 - STAGE I						BENT 2 - STAGE II					
BAR	NO.	SIZE	TYPE	LENGTH	WEIGHT	BAR	NO.	SIZE	TYPE	LENGTH	WEIGHT
B1	16	#10		34'-4"	2364	B6	16	#10		34'-4"	2364
B2	2	#10	STR	31'-11"	275	B7	2	#10	STR	32'-11"	284
B4	8	#4	STR	12'-7"	68	B9	2	#8	STR	31'-1"	166
B5	10	#7	STR	31'-11"	653	B10	24	#4	STR	8'-8"	139
						B11	10	#7	STR	32'-11"	673
						B12	8	#10	STR	4'-2"	143
						B13	10	#7	STR	3'-4"	69
						B14	10	#10	STR	3'-9"	162
M1	32	#9	STR	29'-3"	3182	M2	32	#9	STR	25'-3"	2747
S1	128	#5	2	13'-3"	1769	S3	138	#5	2	14'-7"	2099
S2	16	#5	2	14'-0"	234	S4	16	#5	2	15'-3"	255
U1	38	#4	3	7'-4"	187	U1	46	#4	3	7'-4"	226
U2	5	#4	3	6'-8"	23	U2	5	#4	3	6'-8"	23
U3	4	#4	3	7'-6"	21	U4	4	#4	3	8'-1"	22
V1	32	#9	1	16'-11"	1841	V1	32	#9	1	16'-11"	1841
REINFORCING STEEL LBS. 10,617						REINFORCING STEEL LBS. 11,213					
SP-1	2	***	3	522'-1"	1089	SP-3	2	***	3	428'-1"	893
SP-2	2	**	4	481'-3"	643	SP-2	2	**	4	481'-3"	643
SPIRAL COLUMN REINFORCING STEEL LBS. 1,732						SPIRAL COLUMN REINFORCING STEEL LBS. 1,536					
DRILLED PIER CONC. BREAKDOWN:						DRILLED PIER CONC. BREAKDOWN:					
POUR #1 DRILLED PIERS C. Y. 20.4						POUR #1 DRILLED PIERS C. Y. 16.7					
CLASS A CONCRETE BREAKDOWN:						CLASS A CONCRETE BREAKDOWN:					
POUR #2 COLUMNS C. Y. 8.0						POUR #2 COLUMNS C. Y. 8.0					
POUR #3 CAP C. Y. 25.3						POUR #3 CAP C. Y. 30.3					
TOTAL CLASS A CONC. C. Y. 33.3						TOTAL CLASS A CONC. C. Y. 38.3					



SECTION B-B
★ INVERT ALTERNATE STIRRUPS

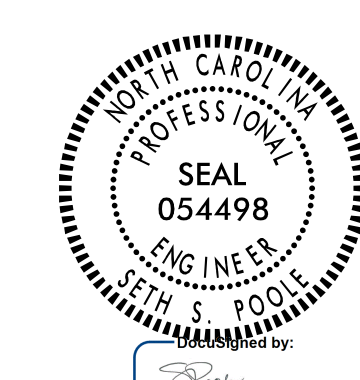


SECTION C-C
★ INVERT ALTERNATE STIRRUPS

ALL BAR DIMENSIONS ARE OUT TO OUT.

PROJECT NO. R-2707
CLEVELAND COUNTY
STATION: 849+00.00 -L-

SHEET 4 OF 4



STATE OF NORTH CAROLINA
DEPARTMENT OF TRANSPORTATION
RALEIGH
SUBSTRUCTURE
BENT 2 DETAILS
(RIGHT LANE)

REVISIONS						SHEET NO.	
NO.	BY:	DATE:	NO.	BY:	DATE:	S6-47	
1			3			TOTAL SHEETS	
2			4			56	

DOCUMENT NOT CONSIDERED FINAL UNLESS ALL SIGNATURES COMPLETED

Stantec
Stantec Consulting Services Inc.
801 Jones Franklin Road
Suite 300
Raleigh, NC 27606
Tel. (919) 851-6866
Fax. (919) 851-7024
www.stantec.com
License No. F-0672

DRAWN BY: J. B. GEILE DATE: 01/24/23
CHECKED BY: S.S. POOLE DATE: 01/10/23
DESIGN ENGINEER OF RECORD: S.S. POOLE DATE: 05/10/23