

PLAN

NOTES:

STIRRUPS IN CAP MAY BE SHIFTED AS NECESSARY TO CLEAR ANCHOR BOLTS AND COLUMN REINFORCEMENT.

HOOKS ON V1 BARS MAY BE TURNED AS NECESSARY FOR PLACING REINFORCING STEEL.

FOR VIEW A-A, AND SECTION B-B, SEE "BENT 1 DETAILS", SHEET 4 OF 4.

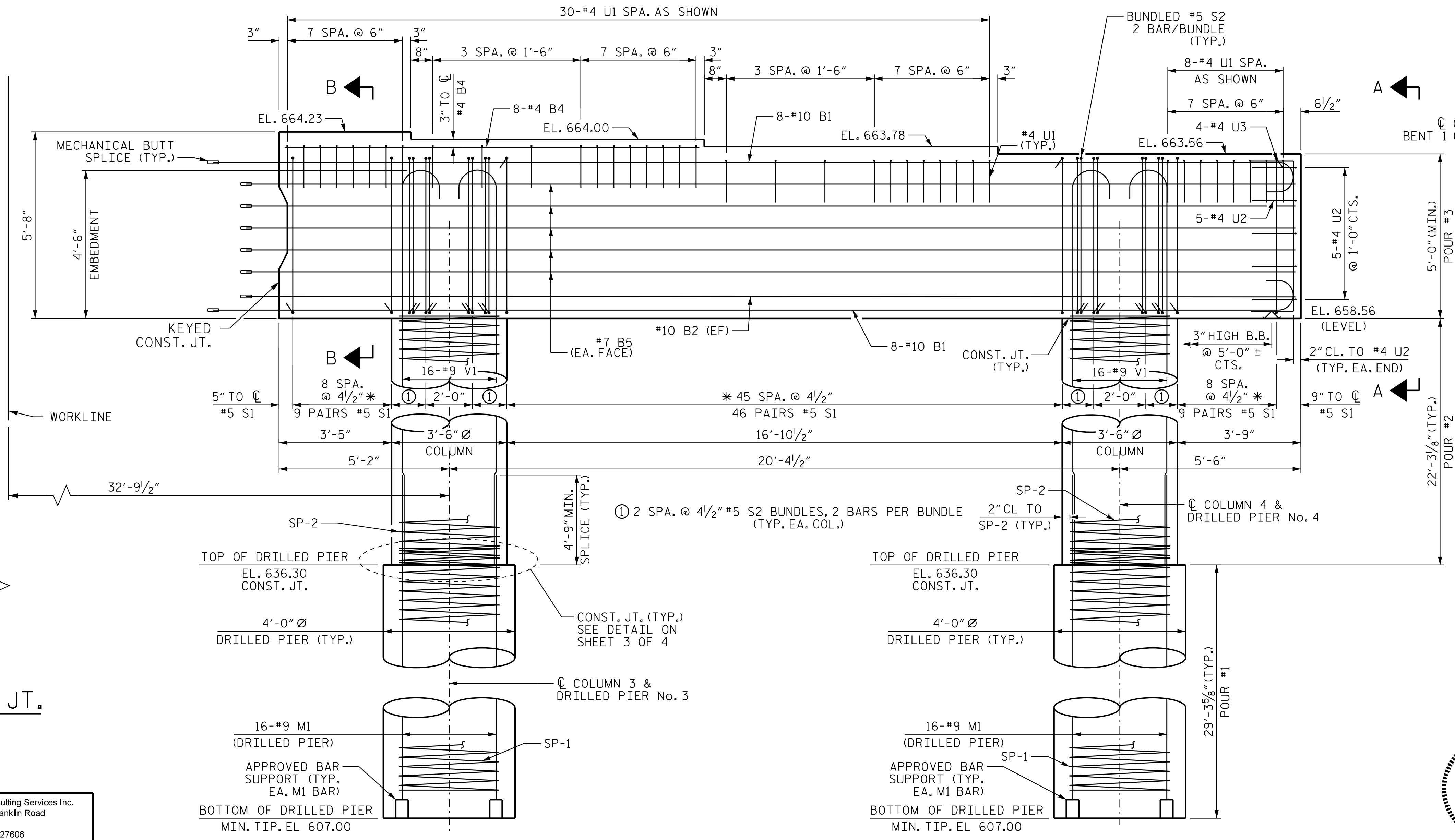
(EF) DENOTES EACH FACE.

THE CONTRACTOR'S ATTENTION IS CALLED TO THE FACT THAT THE LONGITUDINAL REINFORCEMENT FOR DRILLED PIERS IS DETAILED WITH 3 FEET OF EXTRA LENGTH.

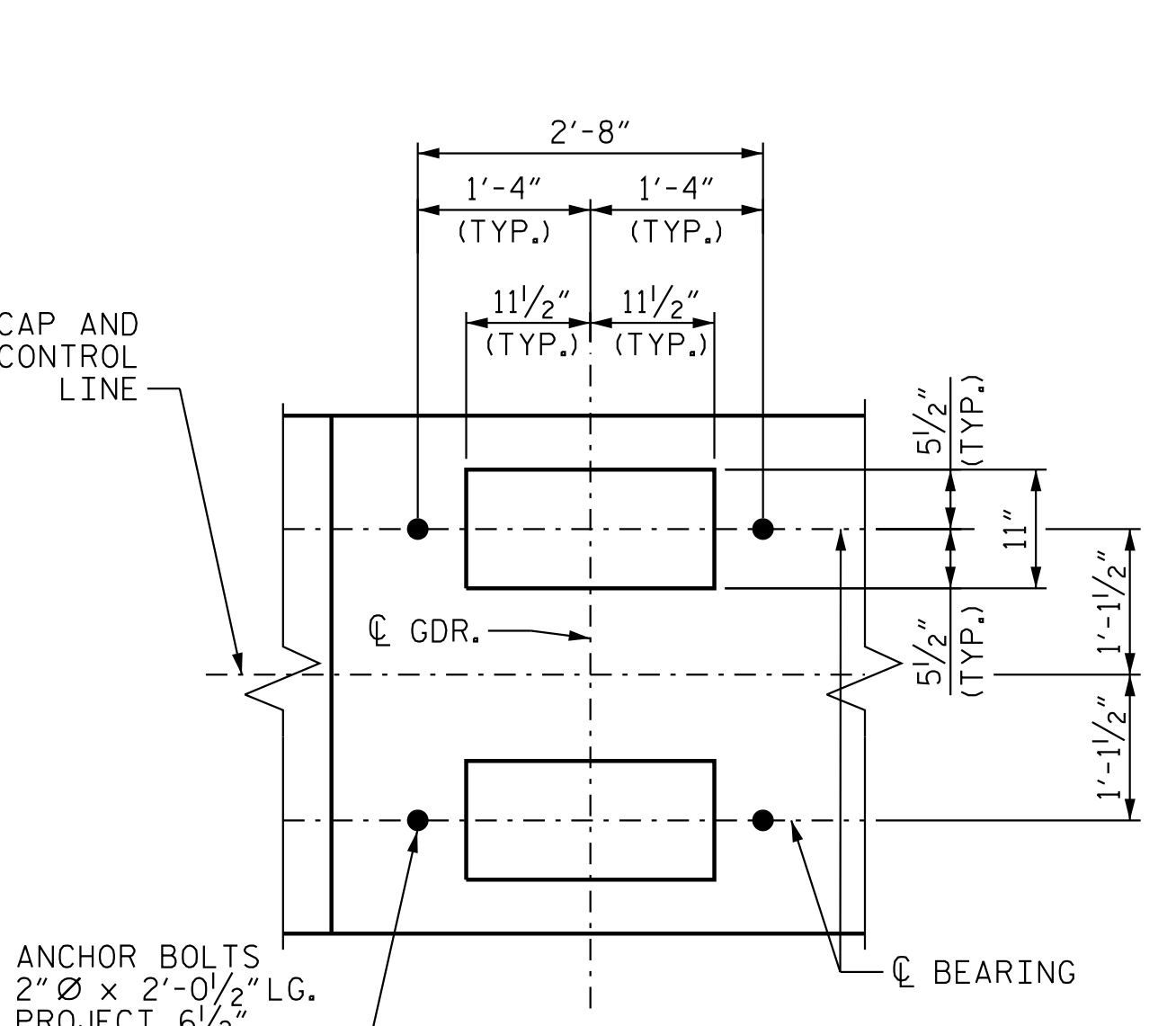
ALL STEEL IN THE DRILLED PIERS IS INCLUDED IN THE PAY ITEMS FOR "REINFORCING STEEL" AND "SPIRAL COLUMN REINFORCING STEEL."

DRILLED PIERS SHALL BE TERMINATED ONE FOOT ± ABOVE NORMAL WATER SURFACE ELEVATION FOR PIERS LOCATED IN WATER.

SPLICING OF THE LONGITUDINAL BARS IN THE DRILLED PIERS WILL NOT BE PERMITTED.

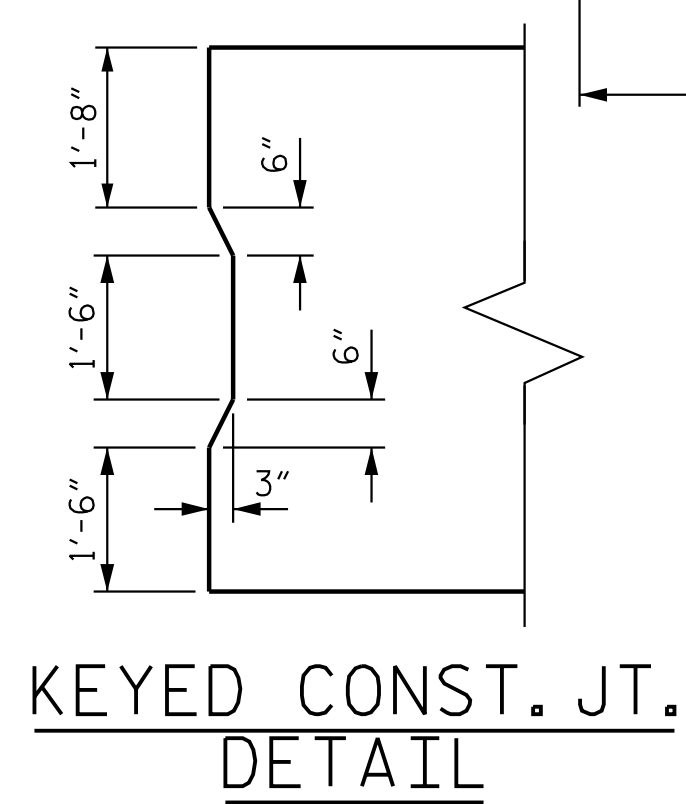


ELEVATION



DETAIL "A"

DIMENSIONS AND DETAILS SHOWN ARE TYPICAL FOR EA. BEARING @ EA. GIRDER.



KEYED CONST. JT. DETAIL

PROJECT NO. R-2707D
 CLEVELAND COUNTY
 STATION: 849+00.00 -L-

SHEET 1 OF 4
 DEPARTMENT OF TRANSPORTATION
 RALEIGH
 SUBSTRUCTURE
 BENT 1 (STAGE I)
 (RIGHT LANE)



Stantec
 Stantec Consulting Services Inc.
 801 Jones Franklin Road
 Suite 300
 Raleigh, NC 27606
 Tel. (919) 851-6866
 Fax. (919) 851-7024
 www.stantec.com
 License No. F-0672

DESIGN ENGINEER OF RECORD: S.S. POOLE DATE: 05/10/23

DRAWN BY: J. B. GEILE DATE: 01/23/23
 CHECKED BY: S.S. POOLE DATE: 01/25/23

DOCUMENT NOT CONSIDERED FINAL UNLESS ALL SIGNATURES COMPLETED

REVISIONS						SHEET NO. S6-40
NO.	BY:	DATE:	NO.	BY:	DATE:	
1			3			TOTAL SHEETS 56
2			4			