

NOTES

FOR WING WALL DETAILS, SEE 'END BENT 1, DETAILS - WING WALLS' SHEET. 3 OF 5.

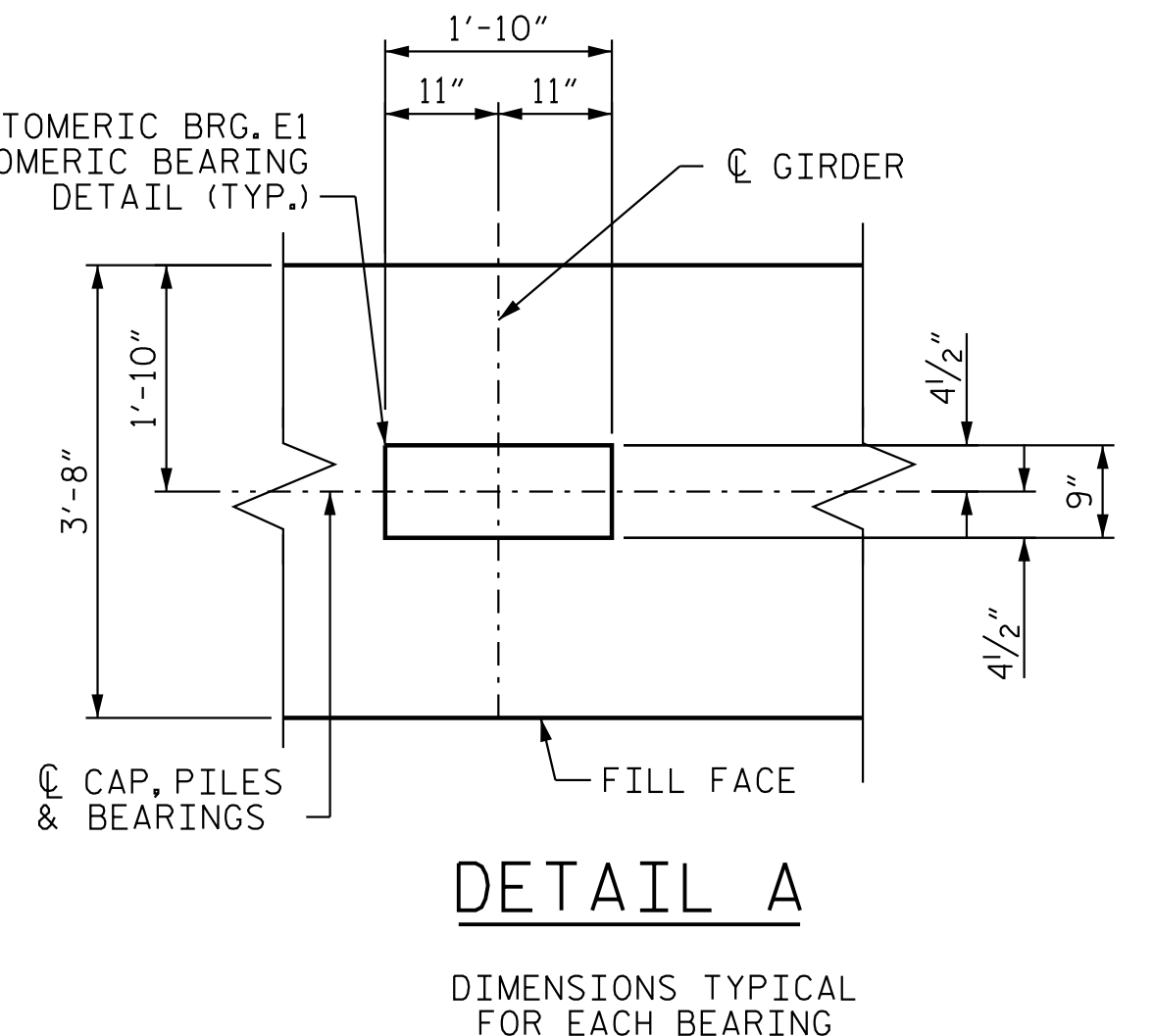
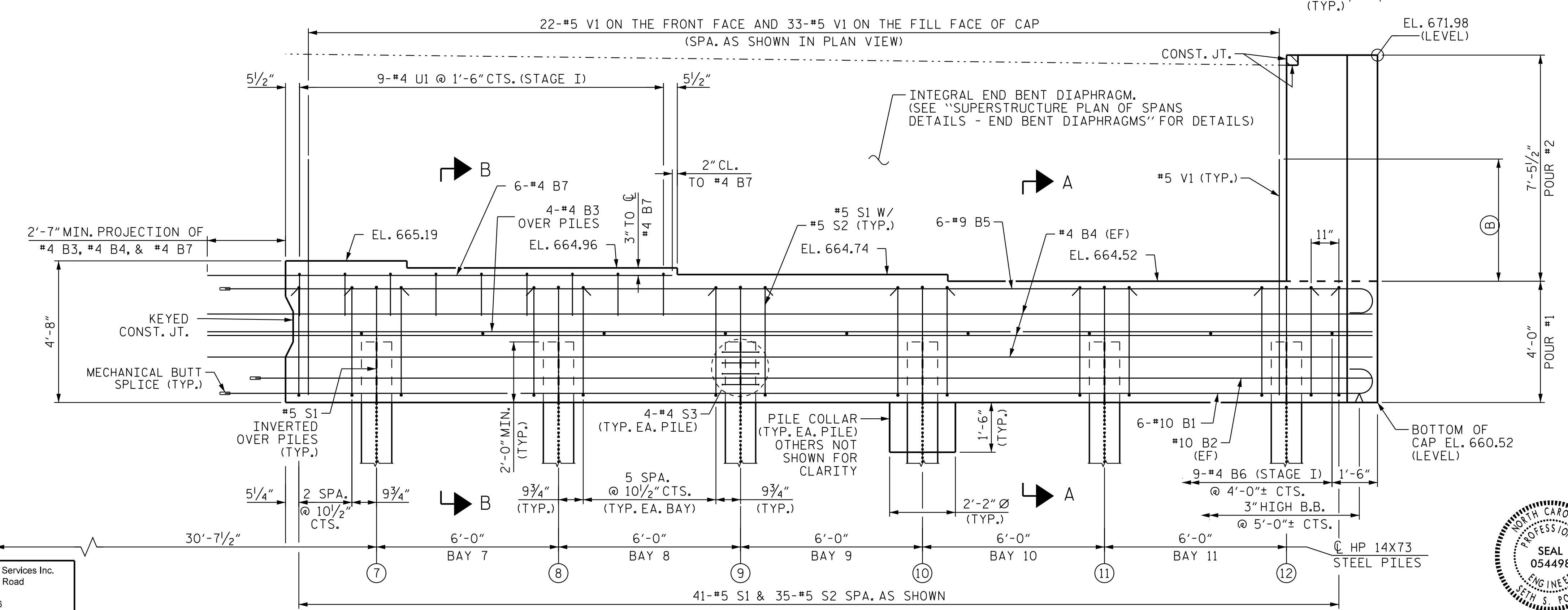
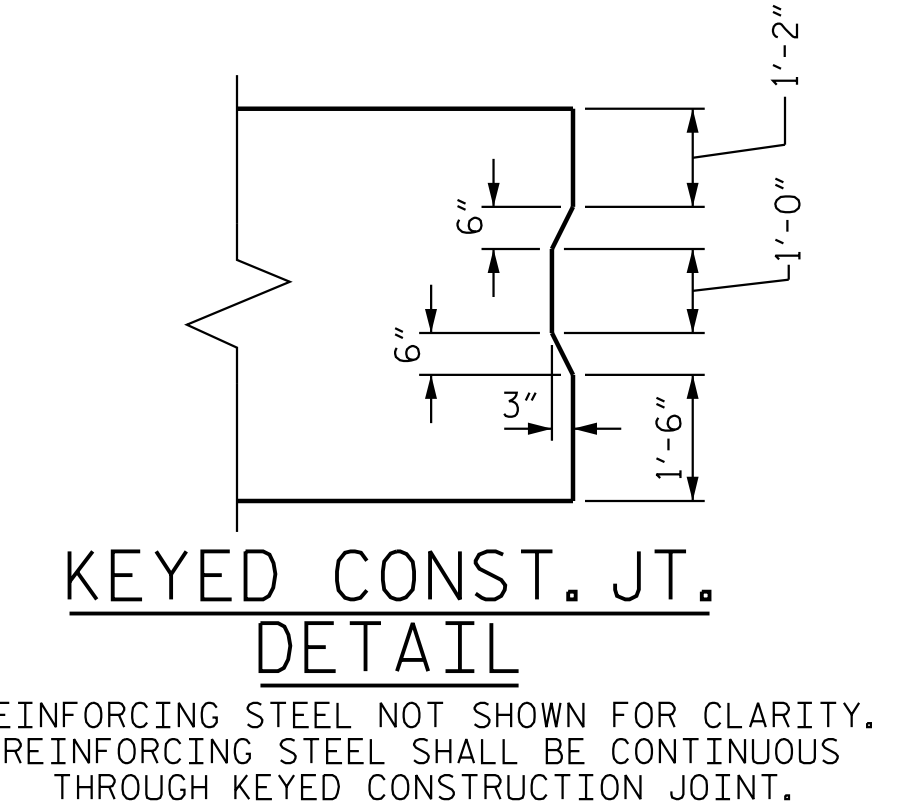
(EF) DENOTES EACH FACE

CHAMFERS ARE NOT REQUIRED EXCEPT AS NOTED.

FOR SECTIONS A-A AND B-B, SEE END BENT 1 DETAILS, SHEET 4 OF 5.

(A) SLOPED CAP SURFACE BEYOND LIMIT OF INTEGRAL DIAPH. SEE END BENT 1 WING WALL DETAILS, SHEET. 3 OF 5.

(B) #5 V1 3'-0" MIN. PROJ. ABOVE BRIDGE SEAT



PROJECT NO. R-2707D
 CLEVELAND COUNTY
 STATION: 849+00.00 -L-

SHEET 1 OF 5

STATE OF NORTH CAROLINA
 DEPARTMENT OF TRANSPORTATION
 RALEIGH
 SUBSTRUCTURE
 END BENT 1 (STAGE I)
 (RIGHT LANE)

REVISIONS						SHEET NO.
NO.	BY:	DATE:	NO.	BY:	DATE:	S6-35
1			3			TOTAL SHEETS
2			4			56



DOCUMENT NOT CONSIDERED FINAL UNLESS ALL SIGNATURES COMPLETED

Stantec Consulting Services Inc.
 801 Jones Franklin Road
 Suite 300
 Raleigh, NC 27606
 Tel. (919) 851-6866
 Fax. (919) 851-7024
 www.stantec.com
 License No. F-0672

DRAWN BY: J.B. GEILE DATE: 12/31/22
 CHECKED BY: S.S. POOLE DATE: 01/10/23

DESIGN ENGINEER OF RECORD: S.S. POOLE DATE: 05/10/23

jHogenbush
 5/10/2023
 c:\pvt\work\king\dms55490\R2707D_SMLL_E101_220101.dgn