

**—SUPERSTRUCTURE BILL OF MATERIAL—
(STAGE I)**

	CLASS AA CONCRETE (CU. YDS.)	REINFORCING STEEL (LBS.)	EPOXY COATED REINFORCING STEEL (LBS.)
POUR #1A	106.4		
POUR #2A	165.8		
POUR #3A	107.3		
POUR #4A	70.5		
TOTALS**	450.0	34,580	39,887

** QUANTITIES FOR BARRIER RAIL ARE NOT INCLUDED

GROOVING BRIDGE FLOORS

APPROACH SLABS	3,038	SO.FT.
BRIDGE DECK	19,737	SO.FT.
TOTAL	22,775	SO.FT.

SUPERSTRUCTURE REINFORCING STEEL LENGTHS ARE BASED ON THE FOLLOWING MINIMUM SPLICE LENGTHS

BAR SIZE	SUPERSTRUCTURE EXCEPT APPROACH SLABS, PARAPET, AND BARRIER RAIL		APPROACH SLABS		PARAPET AND BARRIER RAIL
	EPOXY COATED	UNCOATED	EPOXY COATED	UNCOATED	
#4	1'-11"	1'-7"	1'-11"	1'-7"	2'-6"
#5	2'-5"	2'-0"	2'-5"	2'-0"	3'-1"
#6	2'-10"	2'-5"	3'-7"	2'-5"	3'-8"
#7	4'-2"	2'-9"			
#8	4'-9"	3'-2"			

**—SUPERSTRUCTURE BILL OF MATERIAL—
(STAGE II)**

	CLASS AA CONCRETE (CU. YDS.)	REINFORCING STEEL (LBS.)	EPOXY COATED REINFORCING STEEL (LBS.)
POUR #1B	99.2		
POUR #2B	166.5		
POUR #3B	115.8		
POUR #4B	74.4		
POUR #5	23.6		
TOTALS**	483.2	36,247	41,409

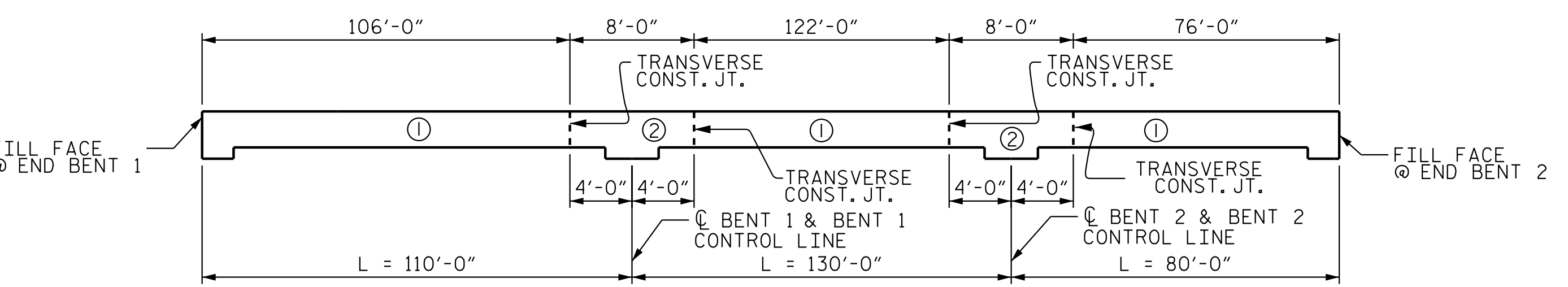
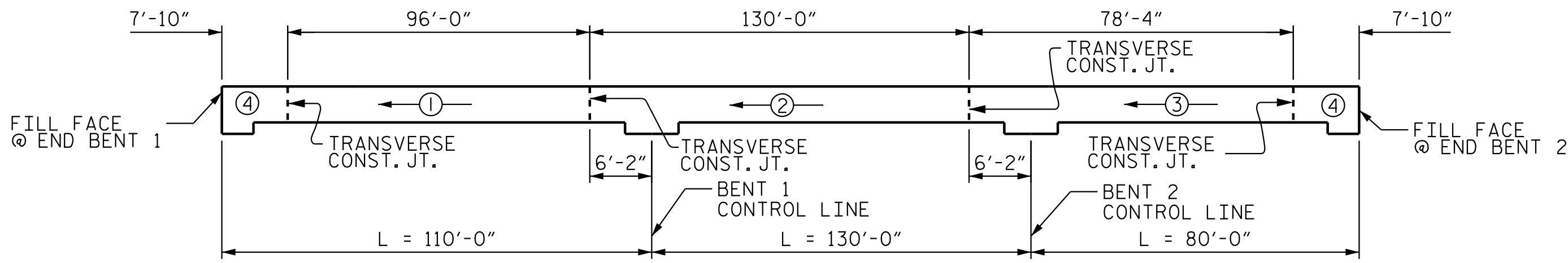
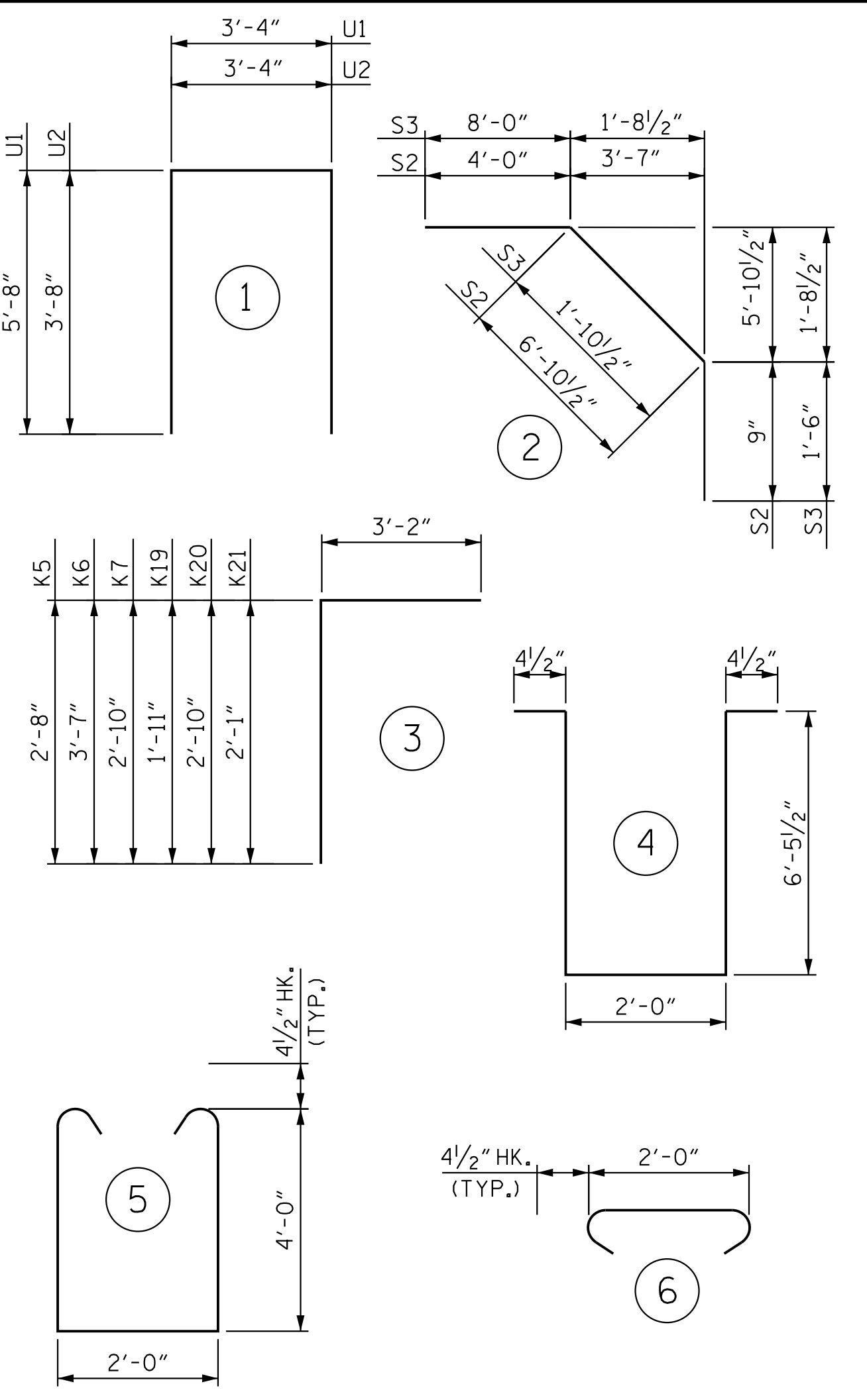
** QUANTITIES FOR BARRIER RAIL ARE NOT INCLUDED

STAGE I REINF. BAR SCHEDULE

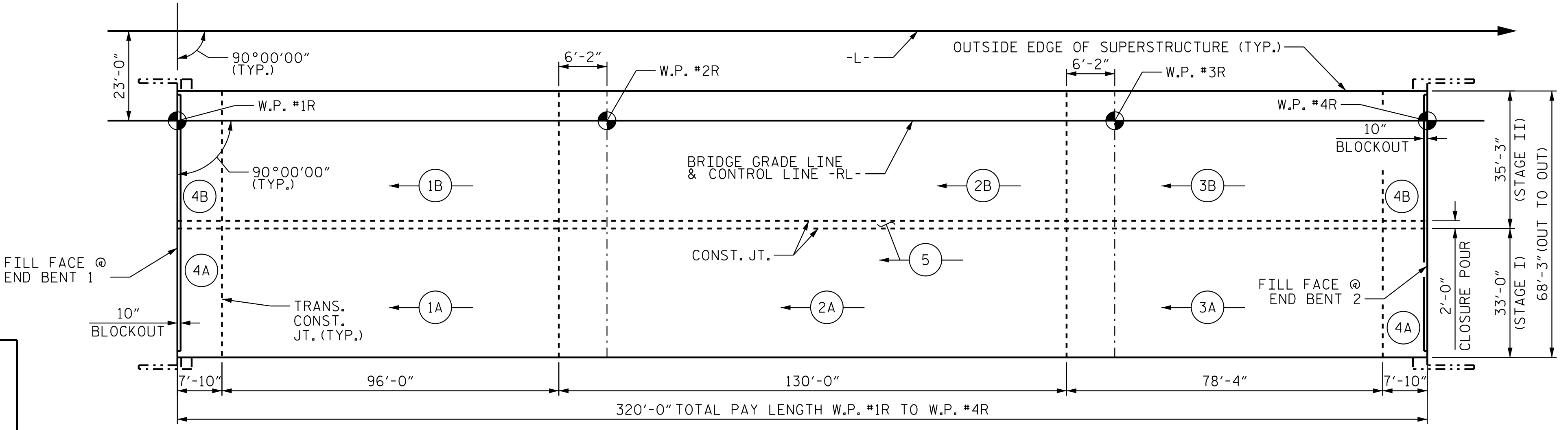
BAR	NO.	SIZE	TYPE	LENGTH	WEIGHT	BAR	NO.	SIZE	TYPE	LENGTH	WEIGHT
*A1	545	#5	STR	32'-8"	18569	*A3	545	#5	STR	32'-11"	18711
A2	545	#5	STR	32'-8"	18569	A4	545	#5	STR	32'-11"	18711
*B1	138	#5	STR	55'-1"	7929	*B1	156	#5	STR	55'-1"	8963
*B2	42	#6	STR	21'-0"	1325	*B2	44	#6	STR	21'-0"	1388
*B3	42	#6	STR	23'-10"	1504	*B3	42	#6	STR	23'-10"	1504
*B4	124	#6	STR	39'-5"	7342	*B4	128	#6	STR	39'-5"	7579
B5	234	#5	STR	54'-8"	13302	B5	258	#5	STR	54'-6"	14666
*D1	545	#5	STR	4'-3"	2416	*D1	545	#5	STR	4'-3"	2416
K1	12	#4	STR	34'-8"	278	K2	6	#4	STR	6'-2"	25
K2	6	#4	STR	6'-2"	25	K3	24	#4	STR	8'-0"	129
K3	24	#4	STR	8'-0"	129	K4	6	#4	STR	6'-5"	26
K4	6	#4	STR	6'-5"	26	K5	2	#4	3	5'-10"	8
K5	2	#4	3	5'-10"	8	K6	8	#4	3	6'-9"	37
K6	8	#4	3	6'-9"	37	K7	2	#4	3	6'-0"	9
K7	2	#4	3	6'-0"	9	K11	12	#4	STR	5'-0"	41
K8	2	#4	STR	2'-9"	4	K12	60	#4	STR	8'-0"	321
K9	8	#4	STR	3'-1"	17	K13	12	#4	STR	5'-3"	43
K10	2	#4	STR	2'-3"	4	K15	12	#4	STR	34'-11"	280
K11	12	#4	STR	5'-0"	41	K22	2	#4	STR	2'-5"	4
K12	60	#4	STR	8'-0"	321	K23	8	#4	STR	3'-4"	18
K13	12	#4	STR	5'-3"	43	K24	2	#4	STR	2'-7"	4
K14	14	#4	STR	30'-7"	287	K28	4	#4	STR	2'-1"	6
						K29	16	#4	STR	5'-1"	68
						K30	4	#4	STR	2'-4"	7
						K31	14	#4	STR	30'-11"	290
U1	42	#4	1	14'-8"	412	U1	42	#4	1	14'-8"	412
U2	18	#4	1	10'-8"	129	U2	18	#4	1	10'-8"	129
U3	36	#4	4	15'-8"	377	U3	36	#4	4	15'-8"	377
U4	12	#4	5	9'-7"	77	U4	12	#4	5	9'-7"	77
S1	264	#4	6	2'-9"	485	S1	304	#4	6	2'-9"	559
*S2	64	#4	2	11'-8"	499	*S2	68	#4	2	11'-8"	530
*S3	40	#4	2	11'-4"	303	*S3	42	#4	2	11'-4"	318

REINFORCING STEEL	34,580 LBS.	REINFORCING STEEL	36,247 LBS.	
*EPOXY COATED REINFORCING STEEL	39,887 LBS.	*EPOXY COATED REINFORCING STEEL	41,409 LBS.	
TOTAL STAGE I AND STAGE II	REINFORCING STEEL	70,827 LBS.	EPOXY COATED REINFORCING STEEL	81,296 LBS.

BAR TYPES



POUR ② CAN NOT BE STARTED UNTIL BOTH ADJACENT ① POURS REACH A MINIMUM OF 3000 PSI.



PROJECT NO. R-2707D
CLEVELAND COUNTY
 STATION: 849+00.00 -L-



STATE OF NORTH CAROLINA
 DEPARTMENT OF TRANSPORTATION
 RALEIGH

**SUPERSTRUCTURE
 BILL OF MATERIAL**

(RIGHT LANE)

REVISIONS						SHEET NO. S6-34
NO.	BY:	DATE:	NO.	BY:	DATE:	
1			3			TOTAL SHEETS 56
2			4			

Stantec Consulting Services Inc.
 801 Jones Franklin Road
 Suite 300
 Raleigh, NC 27606
 Tel. (919) 851-6866
 Fax. (919) 851-7024
 www.stantec.com
 License No. F-0672

DRAWN BY: J. B. GEILE DATE: 10/11/18 DESIGN OF RECORD: S.S. POOLE DATE: 05/10/23
 CHECKED BY: S. S. POOLE DATE: 12/10/22

DOCUMENT NOT CONSIDERED FINAL UNLESS ALL SIGNATURES COMPLETED

5/10/2023 jHogenbush