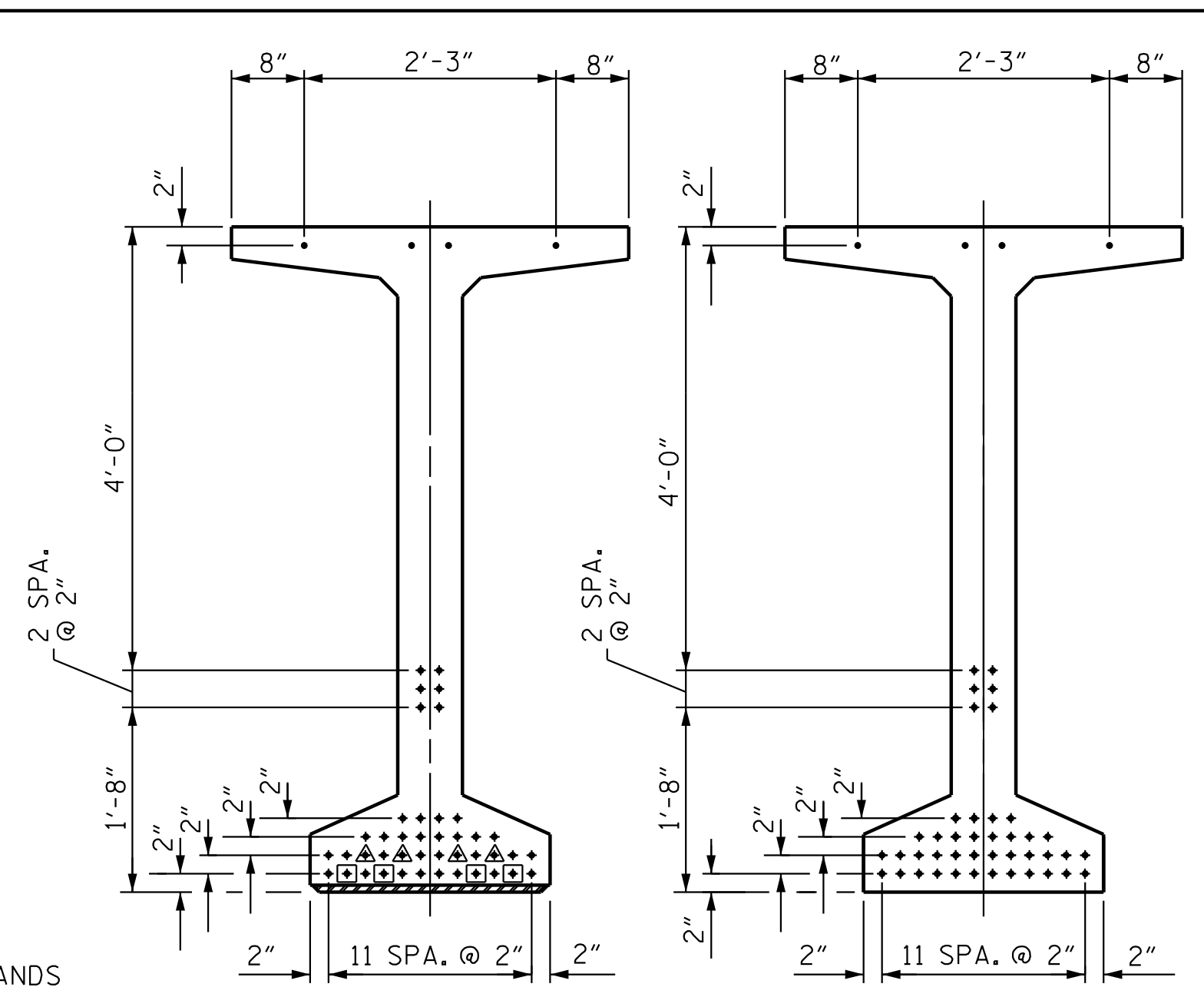


DEBONDING LEGEND

- FULLY BONDED STRANDS
- ▲ STRANDS DEBONDED FOR 12'-0" FROM END OF GIRDER
- STRANDS DEBONDED FOR 16'-0" FROM END OF GIRDER

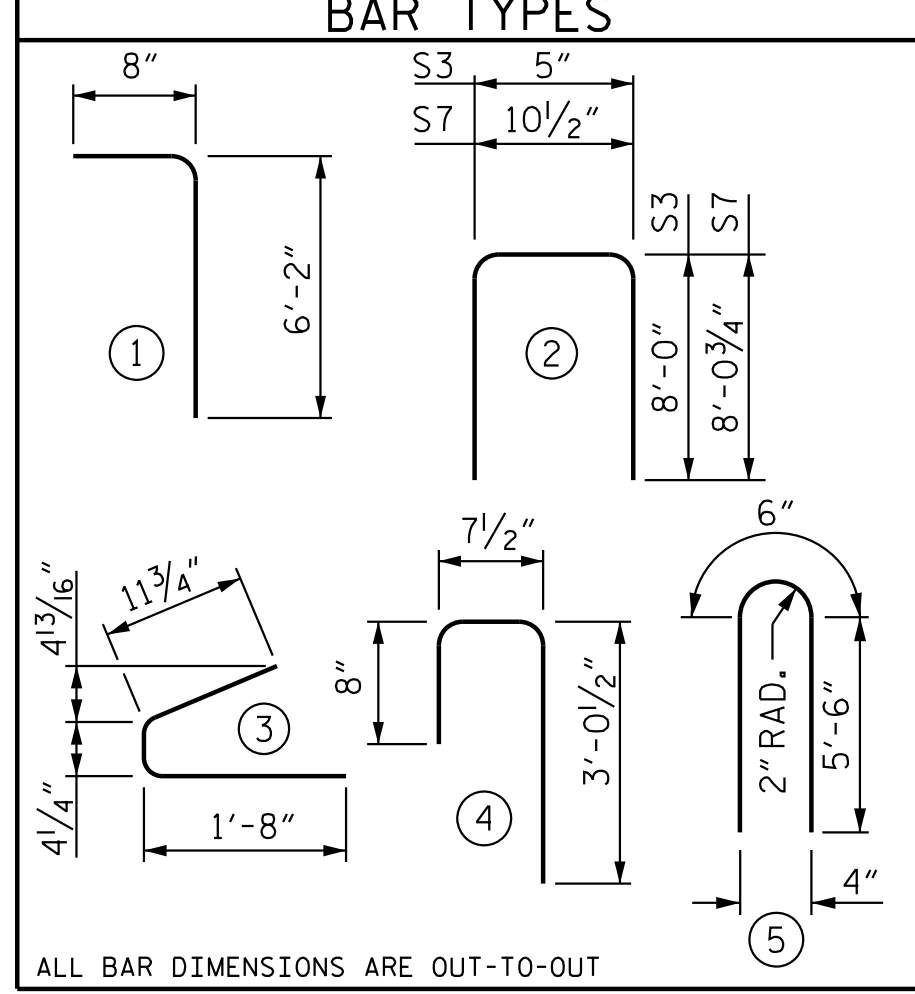


AT END OF GIRDER AT C OF GIRDER
0.6" Ø LOW RELAXATION STRAND LAYOUT

| 0.6" Ø L. R. GRADE 270 STRANDS | | |
|--------------------------------|-------------------------------------|-------------------------------------|
| AREA (SQUARE INCHES) | ULTIMATE STRENGTH (LBS. PER STRAND) | APPLIED PRESTRESS (LBS. PER STRAND) |
| 0.217 | 58,600 | 43,950 |

| REINFORCING STEEL FOR ONE GDR | | | | | |
|-------------------------------|--------|------|------|--------|--------|
| BAR | NUMBER | SIZE | TYPE | LENGTH | WEIGHT |
| S1 | 308 | #4 | 1 | 6'-10" | 1406 |
| S2 | 64 | #6 | 1 | 6'-10" | 657 |
| S3 | 14 | #4 | 2 | 16'-5" | 154 |
| S4 | 380 | #4 | 4 | 4'-4" | 1100 |
| S5 | 132 | #4 | 3 | 3'-0" | 265 |
| * S6 | 20 | #5 | STR | 3'-8" | 77 |
| S7 | 2 | #5 | 2 | 17'-0" | 36 |
| S8 | 2 | #3 | STR | 1'-10" | 2 |
| S9 | 51 | #5 | STR | 3'-3" | 173 |
| S10 | 8 | #5 | 5 | 11'-6" | 96 |
| S11 | 16 | #4 | STR | 8'-0" | 86 |

* NOTE: S6 BARS SHALL BE BENT BEFORE SHIPMENT. HEAT BENDING SHALL NOT BE ALLOWED.



| QUANTITIES FOR ONE GIRDER | | |
|---------------------------|---------------------|---------------------|
| REINFORCING STEEL | 10,000 PSI CONCRETE | 0.6" Ø L.R. STRANDS |
| LB. | C.Y. | No. |
| 4052 | 27.7 | 46 |

| GIRDERS REQUIRED | | |
|------------------|---------|--------------|
| NUMBER | LENGTH | TOTAL LENGTH |
| 8 | 129'-2" | 1,033'-4" |

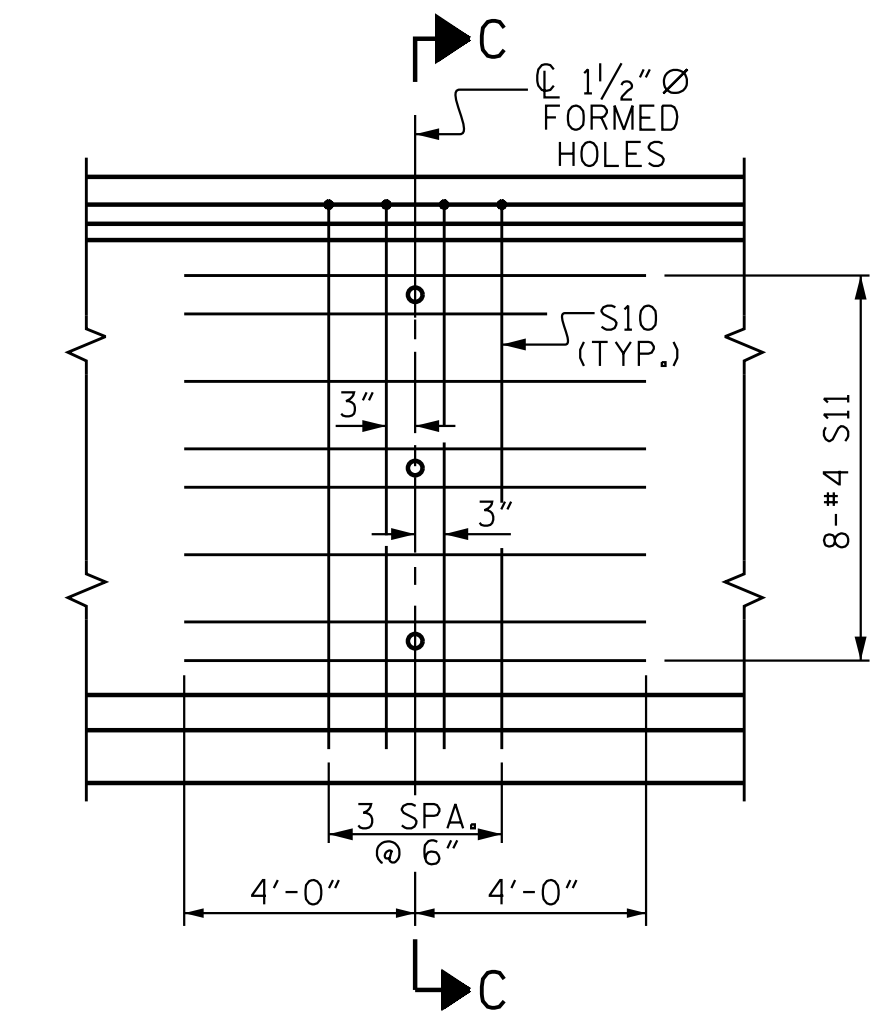
PROJECT NO. R-2707D
CLEVELAND COUNTY
STATION: 849+00.00 -L-

SHEET 2 OF 5

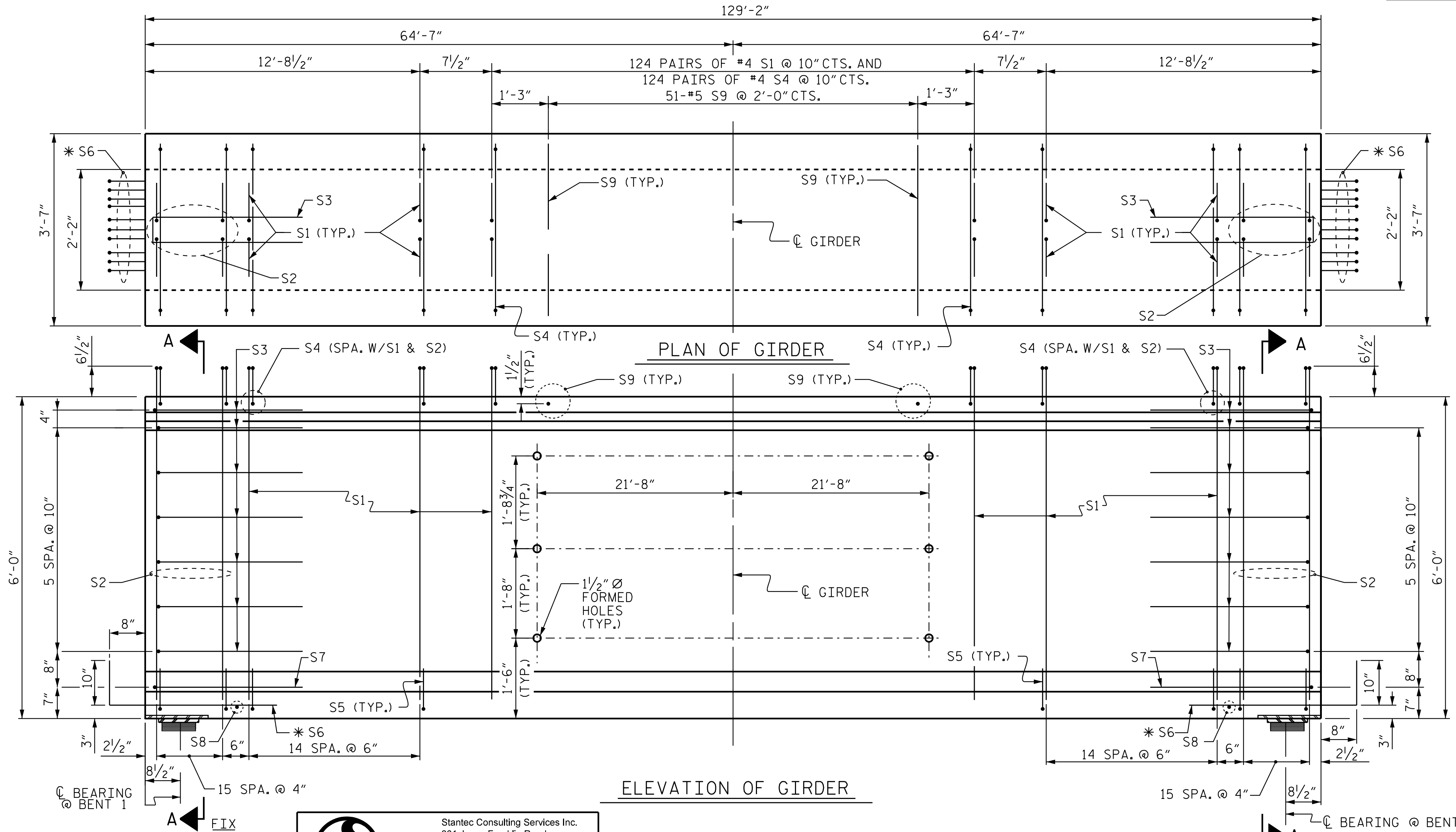
STATE OF NORTH CAROLINA
DEPARTMENT OF TRANSPORTATION
RALEIGH

MODIFIED 72" PRESTRESSED
CONCRETE GIRDER
CONTINUOUS FOR LIVE LOAD
SPAN B
(RIGHT LANE)

| REVISIONS | | | | | | SHEET NO. S6-23 |
|-----------|-----|-------|-----|-----|-------|--------------------|
| NO. | BY: | DATE: | NO. | BY: | DATE: | |
| 1 | | | 3 | | | TOTAL SHEETS 56 |
| 2 | | | 4 | | | |



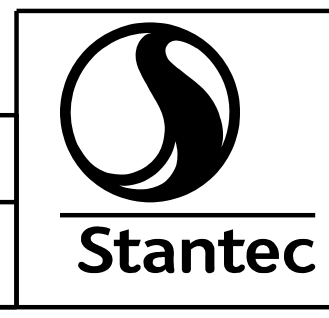
PARTIAL ELEVATION
SHOWING INTERMEDIATE STEEL DIAPHRAGM REINFORCING STEEL FOR ALL GIRDERS



5/10/2023 11:40:20 AM jHagenbush
c:\pvt\working\gms55490\2707D_SML_C02_220101_revisions.dgn

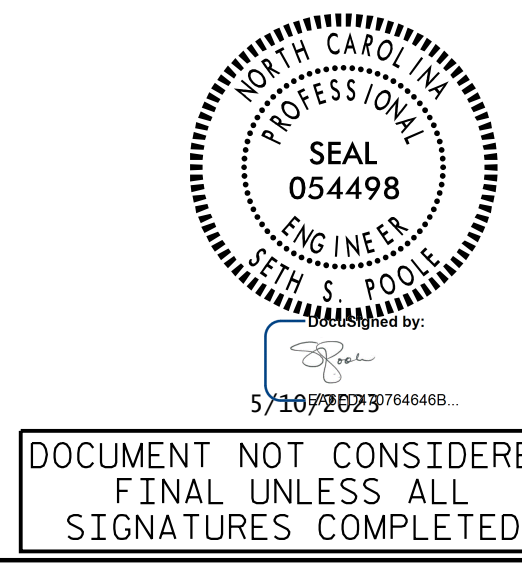
ASSEMBLED BY: J. B. GEILE
CHECKED BY: S. S. POOLE
DATE: 09/18/18
DATE: 12/10/22

DRAWN BY: EEM 2/6/97
CHECKED BY: VAP 2/6/97



Stantec Consulting Services Inc.
801 Jones Franklin Road
Suite 300
Raleigh, NC 27606
Tel. (919) 851-6866
Fax. (919) 851-7024
www.stantec.com
License No. F-0672

DESIGN ENGINEER OF RECORD: S.S. POOLE DATE: 05/10/23



DOCUMENT NOT CONSIDERED FINAL UNLESS ALL SIGNATURES COMPLETED