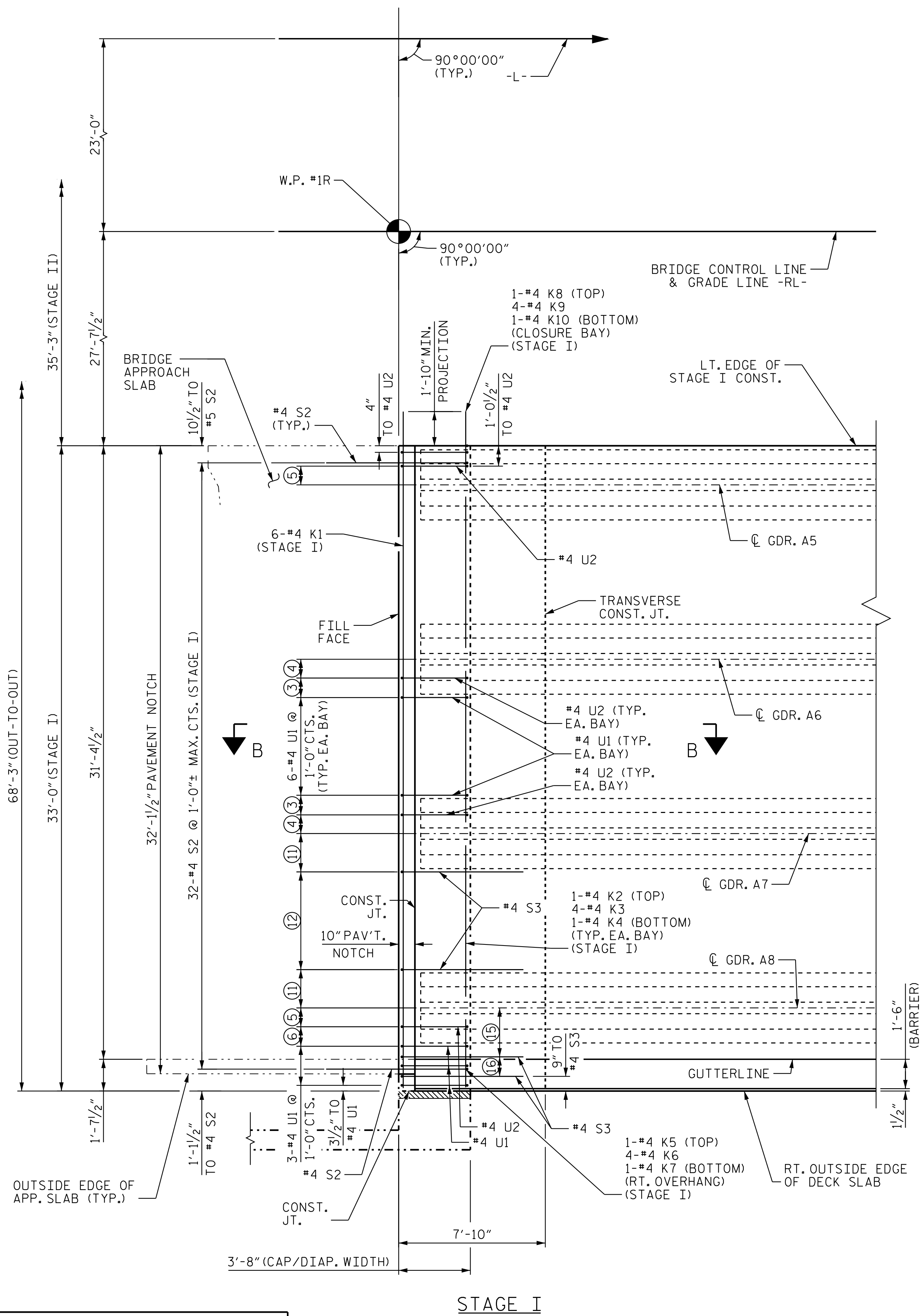


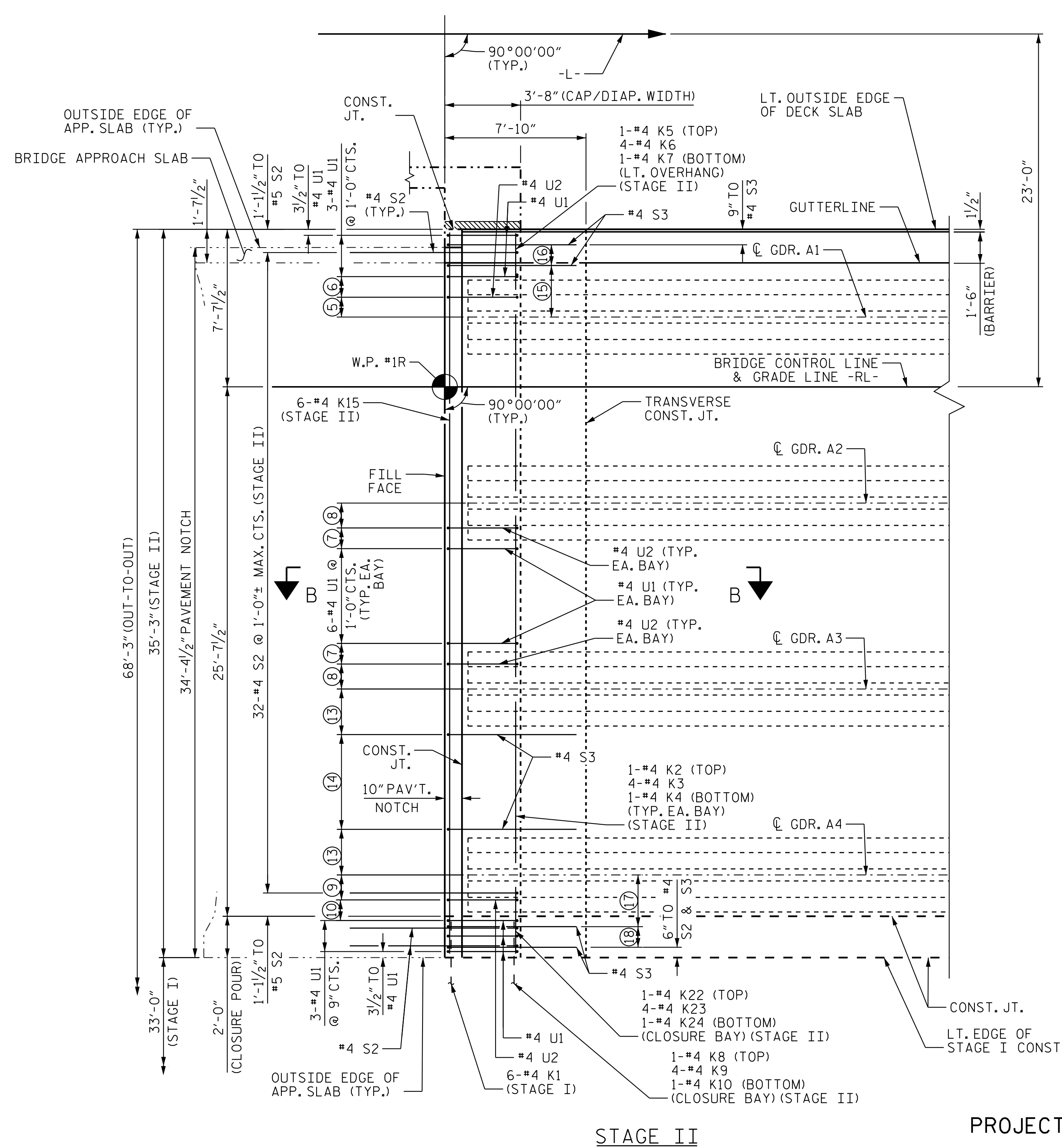
5/10/2023
 jHagenbush
 5/10/2023
 c:\pvt\wv\king\dms55490\270707D_SML_S01_220101.dgn



- ③ 1'-0" TO #4 U1 (TYP. EA. BAY) (STAGE I)
- ④ 1 1/2" TO #4 U2 (TYP. EA. BAY) (STAGE I)
- ⑤ 1 1/2" TO #4 U2
- ⑥ 1'-0" TO #4 U1 (LT. OVERHANG)
- ⑦ 1'-0" TO #4 U1 (TYP. EA. BAY) (STAGE II)
- ⑧ 1'-0" TO #4 U2 (TYP. EA. BAY) (STAGE II)
- ⑨ 1'-2 1/2" TO #4 U2 (STAGE II)
- ⑩ 1'-0" TO #4 U1 (STAGE II)

**TYPICAL END BENT
DIAPHRAGM REINFORCING DETAIL**

DETAILS AT END BENT 1 SHOWN.
 DETAILS AT END BENT 2 ARE
 SIMILAR BY ROTATION.



- ⑪ 1'-11 1/2" TO #4 S3 (TYP. EA. BAY) (STAGE I)
- ⑫ 6'-#4 S3 @ 1'-0" CTS. (TYP. EA. BAY) (STAGE I)
- ⑬ 2'-0" TO #4 S3 (TYP. EA. BAY) (STAGE II)
- ⑭ 6'-#4 S3 @ 1'-0" CTS. (TYP. EA. BAY) (STAGE II)
- ⑮ 2'-6" TO #4 S3
- ⑯ 2'-6" TO #4 S2 & #4 S3 (CLOSURE BAY) (STAGE II)
- ⑰ 2'-6" TO #4 S2 & #4 S3 (CLOSURE BAY) (STAGE II)
- ⑱ 2'-#4 S2 & #4 S3 @ 1'-0" MAX. CTS. (CLOSURE BAY) (STAGE II)

NOTES:
 S2 AND S3 BARS MAY BE REPOSITIONED AS NECESSARY TO CLEAR PRESTRESSED GIRDERS AND OTHER REINFORCING BAR CONFLICTS.
 SEE "END BENT 1 DETAILS - WING WALLS" AND "END BENT 2 DETAILS - WING WALLS" FOR REINFORCEMENT IN WINGS.
 FOR SECTION B-B, SEE "TYPICAL SECTION DETAILS", SHEET 5 OF 5.

PROJECT NO. R-2707D
CLEVELAND COUNTY
 STATION: 849+00.00 -L-

SHEET 7 OF 8

STATE OF NORTH CAROLINA
 DEPARTMENT OF TRANSPORTATION
 RALEIGH
SUPERSTRUCTURE
PLAN OF SPANS
DETAILS - END BENT DIAPHRAGMS
 (RIGHT LANE)



Stantec Consulting Services Inc.
 801 Jones Franklin Road
 Suite 300
 Raleigh, NC 27606
 Tel. (919) 851-6866
 Fax. (919) 851-7024
 www.stantec.com
 License No. F-0672

DRAWN BY: J. B. GEILE DATE: 10/04/18
 CHECKED BY: S. S. POOLE DATE: 12/10/22
 DESIGN ENGINEER OF RECORD: S.S. POOLE DATE: 05/10/23

DOCUMENT NOT CONSIDERED
 FINAL UNLESS ALL
 SIGNATURES COMPLETED

REVISIONS						SHEET NO. S6-19
NO.	BY:	DATE:	NO.	BY:	DATE:	
1			3			TOTAL SHEETS 56
2			4			