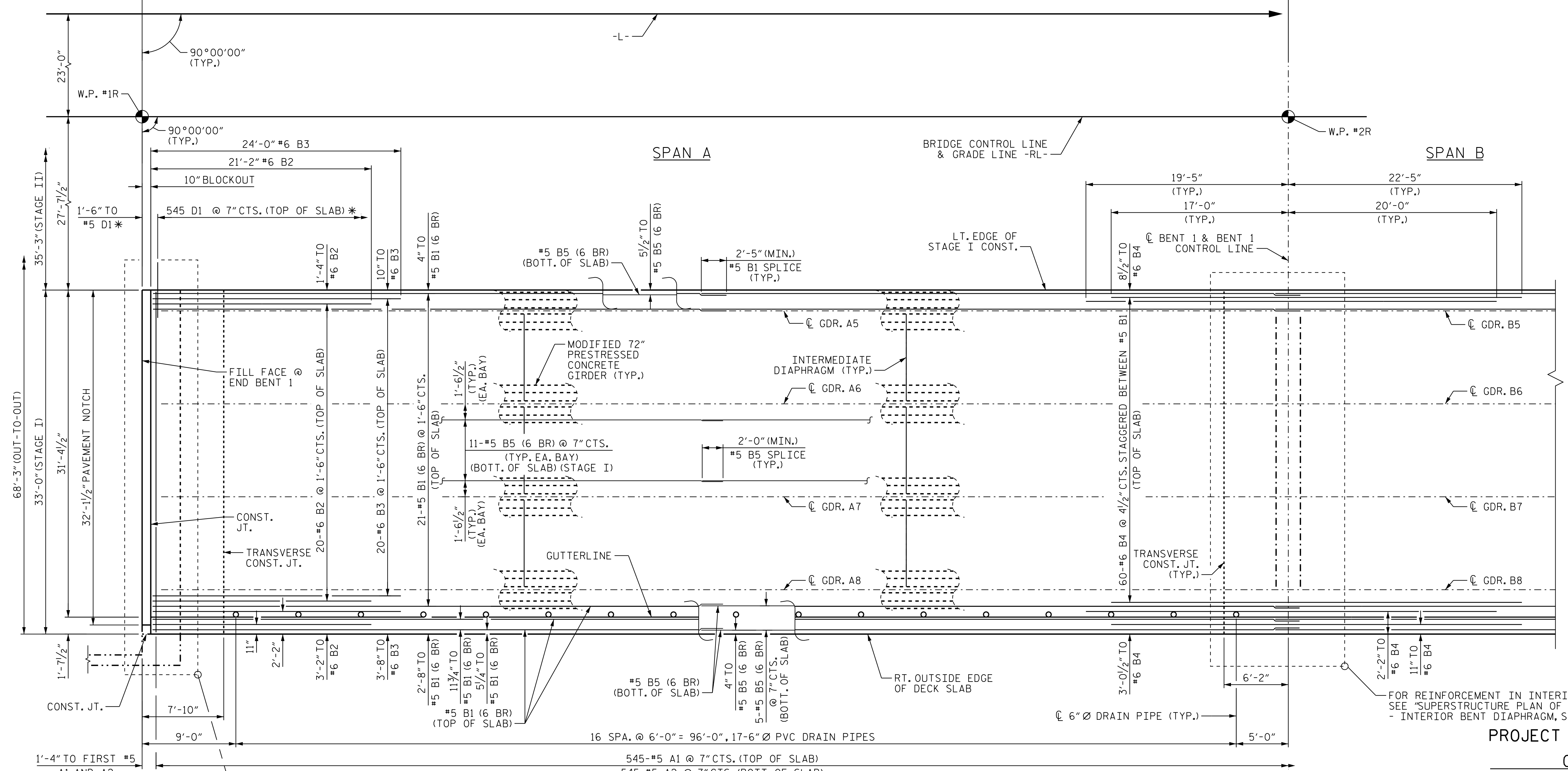


TOTAL LENGTH OF BRIDGE = 320'-0" (FILL FACE TO FILL FACE)

110'-0" (W.P. #1R TO W.P. #2R)

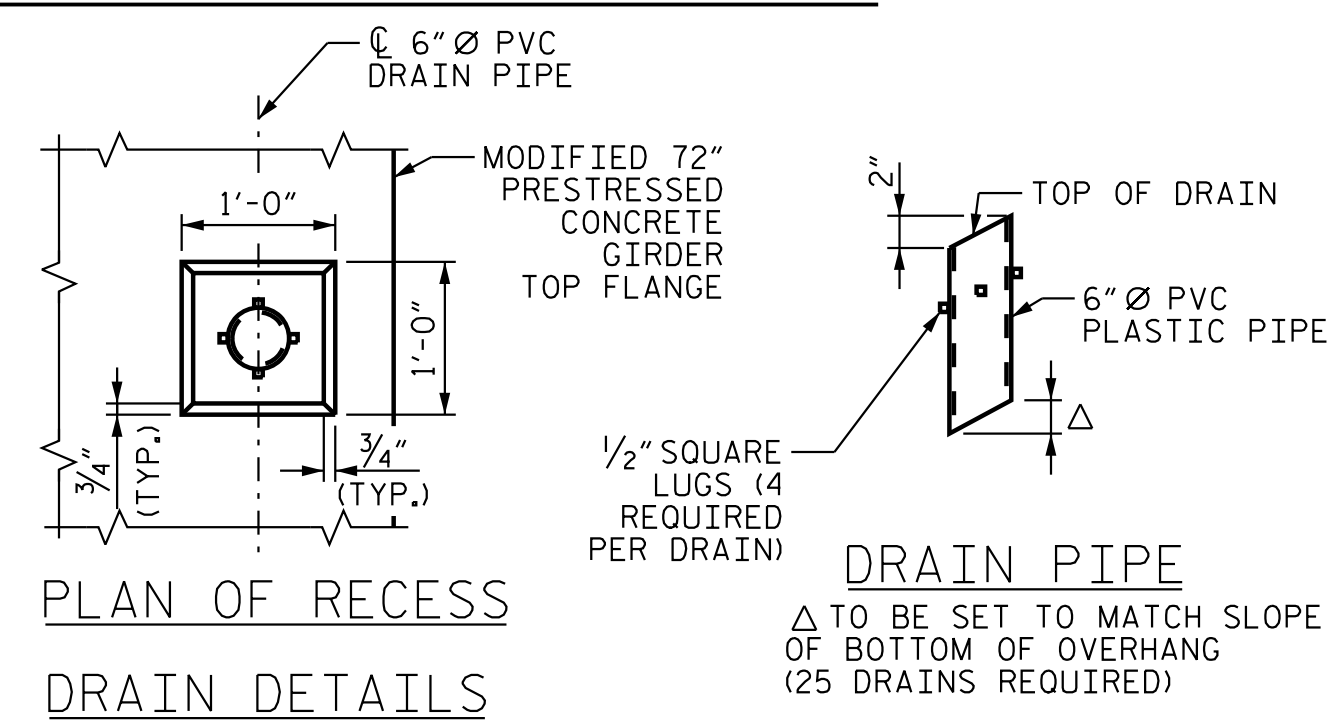
130'-0" (W.P. #2 TO W.P. #3)



**PLAN OF SPANS  
(SPAN A & PARTIAL SPAN B)**

NOTE: (CONT.)  
 (6 BR) DENOTES 6 BAR RUN  
 D1 DOWELS SHALL BE PLACED IN THE SAME HORIZONTAL PLANE AS THE TOP (A1) SLAB REINFORCING STEEL.  
 FOR BARRIER RAIL DETAILS AND REINFORCING STEEL, SEE "CONCRETE BARRIER RAIL" SHEET.

FOR TRANSVERSE CONSTRUCTION JOINT DETAIL, SEE "TYPICAL SECTION DETAILS", SHEET 5 OF 5.  
 FOR POUR SEQUENCE, SEE SHEET "BILL OF MATERIALS"  
 FOR INTERMEDIATE STEEL DIAPHRAGM DETAILS, SEE "INTERMEDIATE STEEL DIAPHRAGMS FOR MODIFIED 72" PRESTRESSED CONCRETE GIRDER" SHEET.  
 TRANSVERSE AND LONGITUDINAL REINFORCING MAY BE ADJUSTED HORIZONTALLY IN THE VICINITY OF THE DRAIN PIPE.



**DRAIN PIPE NOTES:**  
 TOP OF FLOOR DRAIN TO BE SET 3/8" BELOW SURFACE OF SLAB.  
 4 - 1/2" SQUARE LUGS TO BE GLUED TO THE PVC PLASTIC PIPE AT EQUAL SPACES AROUND THE PIPE DRAIN APPROXIMATELY 4" FROM THE TOP OF PIPE.  
 THE 6" Ø PVC PLASTIC PIPE AND FITTINGS SHALL BE SCHEDULE 40 AND CONFORM TO ASTM D1785.



PROJECT NO. R-2707D  
 CLEVELAND COUNTY  
 STATION: 849+00.00 -L-

SHEET 1 OF 8  
 DEPARTMENT OF TRANSPORTATION  
 RALEIGH  
 SUPERSTRUCTURE  
 PLAN OF SPANS  
 (SPAN A)  
 (STAGE I)  
 (RIGHT LANE)

REVISIONS						SHEET NO.
NO.	BY:	DATE:	NO.	BY:	DATE:	S6-13
1			3			TOTAL SHEETS
2			4			56

DOCUMENT NOT CONSIDERED FINAL UNLESS ALL SIGNATURES COMPLETED

**Stantec**  
 Stantec Consulting Services Inc.  
 801 Jones Franklin Road  
 Suite 300  
 Raleigh, NC 27606  
 Tel. (919) 851-6866  
 Fax. (919) 851-7024  
 www.stantec.com  
 License No. F-0672

DRAWN BY: J. B. GEILE DATE: 10/10/18  
 CHECKED BY: S. S. POOLE DATE: 12/10/22  
 DESIGN ENGINEER OF RECORD: S. S. POOLE DATE: 05/10/23

jHagenbush

5/10/2023

c:\pvt\work\king\dms55490\92707D\_SML\_S01\_220101.dgn