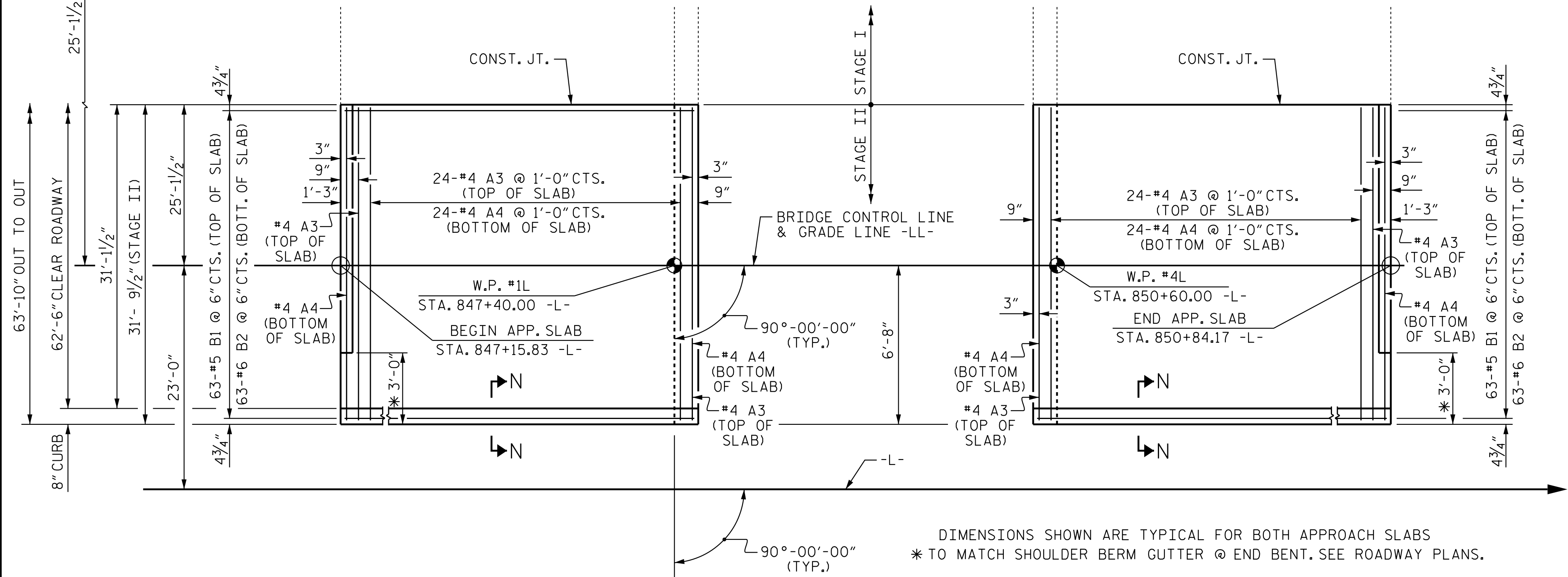


DIMENSIONS SHOWN ARE TYPICAL FOR BOTH APPROACH SLABS
 * TO MATCH SHOULDER BERM GUTTER @ END BENT. SEE ROADWAY PLANS.



DIMENSIONS SHOWN ARE TYPICAL FOR BOTH APPROACH SLABS
 * TO MATCH SHOULDER BERM GUTTER @ END BENT. SEE ROADWAY PLANS.

NOTES

APPROACH SLAB SHALL NOT BE CONSTRUCTED PRIOR TO COMPLETION OF THE BRIDGE DECK.

FOR BRIDGE APPROACH FILL INCLUDING GEOTEXTILE, 6" Ø DRAINAGE PIPE, AND SELECT MATERIAL, SEE ROADWAY PLANS.

GEOTEXTILE SHALL BE TYPE 1 IN ACCORDANCE WITH THE STANDARD SPECIFICATIONS SECTION 1056.

SELECT MATERIAL BACKFILL (CLASS V OR CLASS VI) SHALL BE IN ACCORDANCE WITH STANDARD SPECIFICATIONS SECTION 1016.

SELECT MATERIAL BACKFILL IS TO BE CONTINUOUS ALONG FILL FACE OF BACKWALL FROM OUTSIDE EDGE TO OUTSIDE EDGE OF APPROACH SLAB.

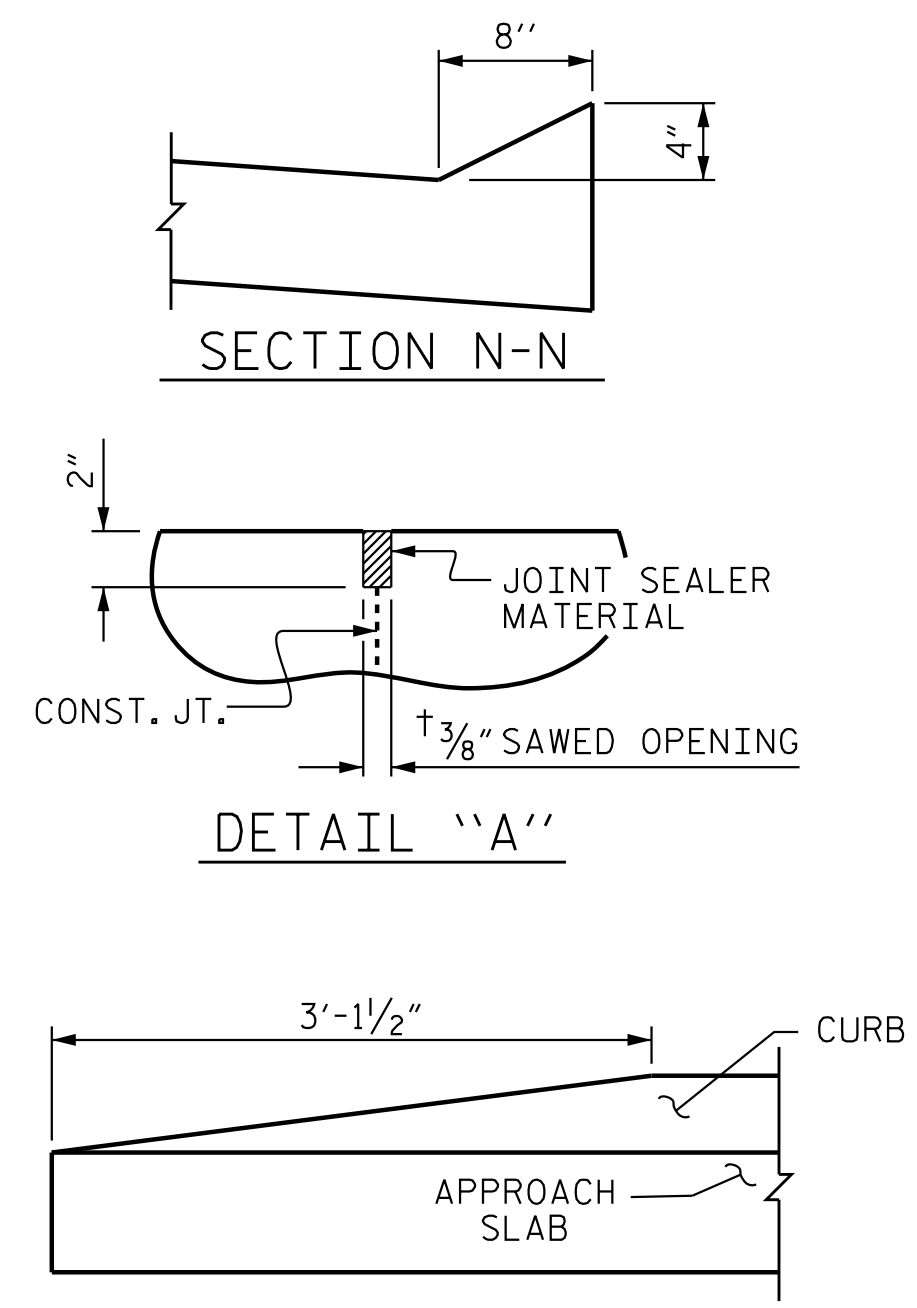
FOR THE 6" Ø DRAINAGE PIPE OUTLET(S), SEE ROADWAY STANDARD DRAWINGS.

AREA BETWEEN THE WINGWALL AND APPROACH SLAB SHALL BE GRADED TO DRAIN THE WATER AWAY FROM THE FILL FACE OF THE BRIDGE AND SHALL BE PAVED. SEE ROADWAY PLANS.

THE JOINT OPENING AT THE APPROACH SLAB/DECK INTERFACE SHALL BE SAWED NO MORE THAN 12 HOURS AFTER THE APPROACH SLAB IS CAST. THE JOINT SHALL BE CLEANED OF ALL DEBRIS BEFORE THE SEALANT IS APPLIED. THE JOINT SEALER MATERIAL SHALL CONFORM TO THE REQUIREMENTS OF SECTION 1028-3 OF THE STANDARD SPECIFICATIONS.

AT THE CONTRACTORS OPTION, "TYPE A - ALTERNATE APPROACH FILL" IN LIEU OF "TYPE I - STANDARD APPROACH FILL" MAY BE CONSTRUCTED AT NO ADDITIONAL COST TO THE DEPARTMENT. SEE SHEET 3 OF 3 FOR DETAILS AND NOTES.

FOR SECTION THROUGH APPROACH SLAB, SEE BRIDGE APPROACH SLAB DETAILS, SHEET 2 OF 3.



END OF CURB WITHOUT SHOULDER BERM GUTTER

STAGE I BILL OF MATERIAL						
FOR ONE APPROACH SLAB (2 REQ'D)						
BAR	NO.	SIZE	TYPE	LENGTH	WEIGHT	
* A1	26	#4	STR	33'-9"	586	
A2	26	#4	STR	33'-9"	586	
* B1	64	#5	STR	24'-1"	1608	
B2	64	#6	STR	24'-7"	2364	
REINFORCING STEEL				LBS.	2950	
* EPOXY COATED REINFORCING STEEL				LBS.	2194	
CLASS AA CONCRETE				C. Y.	34.6	

STAGE II BILL OF MATERIAL						
FOR ONE APPROACH SLAB (2 REQ'D)						
BAR	NO.	SIZE	TYPE	LENGTH	WEIGHT	
* A3	26	#4	STR	31'-4"	544	
A4	26	#4	STR	31'-4"	544	
* B1	63	#5	STR	24'-1"	1583	
B2	63	#6	STR	24'-7"	2327	
REINFORCING STEEL				LBS.	2871	
* EPOXY COATED REINFORCING STEEL				LBS.	2127	
CLASS AA CONCRETE				C. Y.	34.3	

SPLICE LENGTHS		
BAR SIZE	EPOXY COATED	UNCOATED
#4	1'-11"	1'-7"
#5	2'-5"	2'-0"
#6	3'-7"	2'-5"

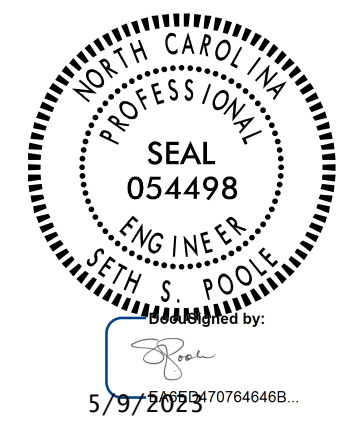
PROJECT NO. R-2707D
CLEVELAND COUNTY
 STATION: 849+00.00 -L-

SHEET 1 OF 3

STATE OF NORTH CAROLINA
 DEPARTMENT OF TRANSPORTATION
 RALEIGH

BRIDGE APPROACH SLAB
 FOR INTEGRAL ABUTMENT
 WITH FLEXIBLE PAVEMENT
 (LEFT LANE)

REVISIONS						SHEET NO.
NO.	BY:	DATE:	NO.	BY:	DATE:	S5-54
1			3			TOTAL SHEETS
2			4			56



DOCUMENT NOT CONSIDERED FINAL UNLESS ALL SIGNATURES COMPLETED

Stantec Consulting Services Inc.
 801 Jones Franklin Road
 Suite 300
 Raleigh, NC 27606
 Tel. (919) 851-6866
 Fax. (919) 851-7024
 www.stantec.com
 License No. F-0672

ASSEMBLED BY : J.B. GEILE DATE : 01/23/23
 CHECKED BY : S.S. POOLE DATE : 01/25/23

DRAWN BY : TLA 10/05
 CHECKED BY : GM 5/06

DESIGN ENGINEER OF RECORD: S.S. POOLE DATE : 05/09/23