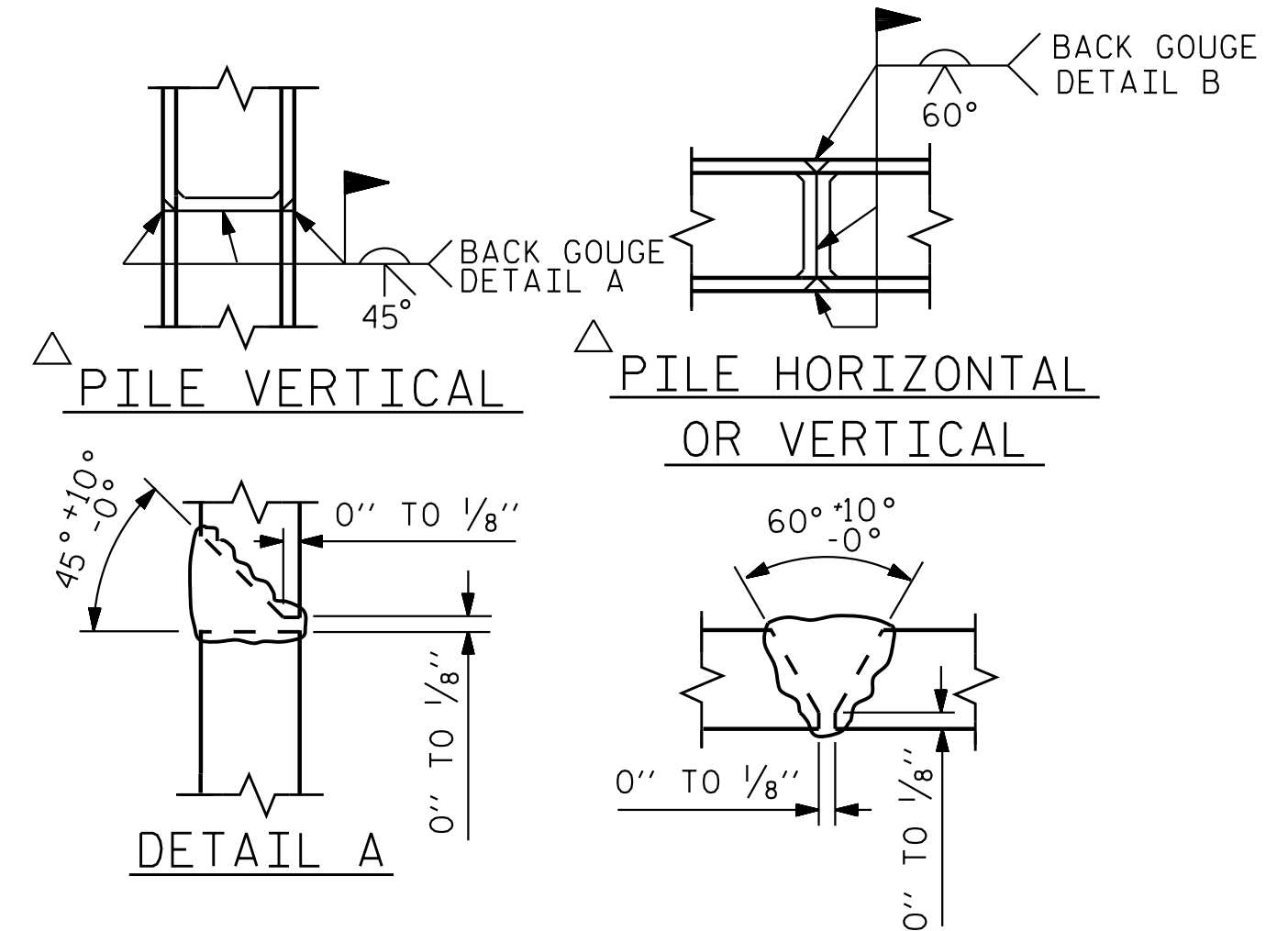


BAGGED STONE AND PIPE SHALL BE PLACED IMMEDIATELY AFTER COMPLETION OF END BENT EXCAVATION. PIPE MAY BE EITHER CONCRETE, CORRUGATED STEEL, CORRUGATED ALUMINUM ALLOY, OR CORRUGATED PLASTIC. PERFORATED PIPE WILL NOT BE ALLOWED.

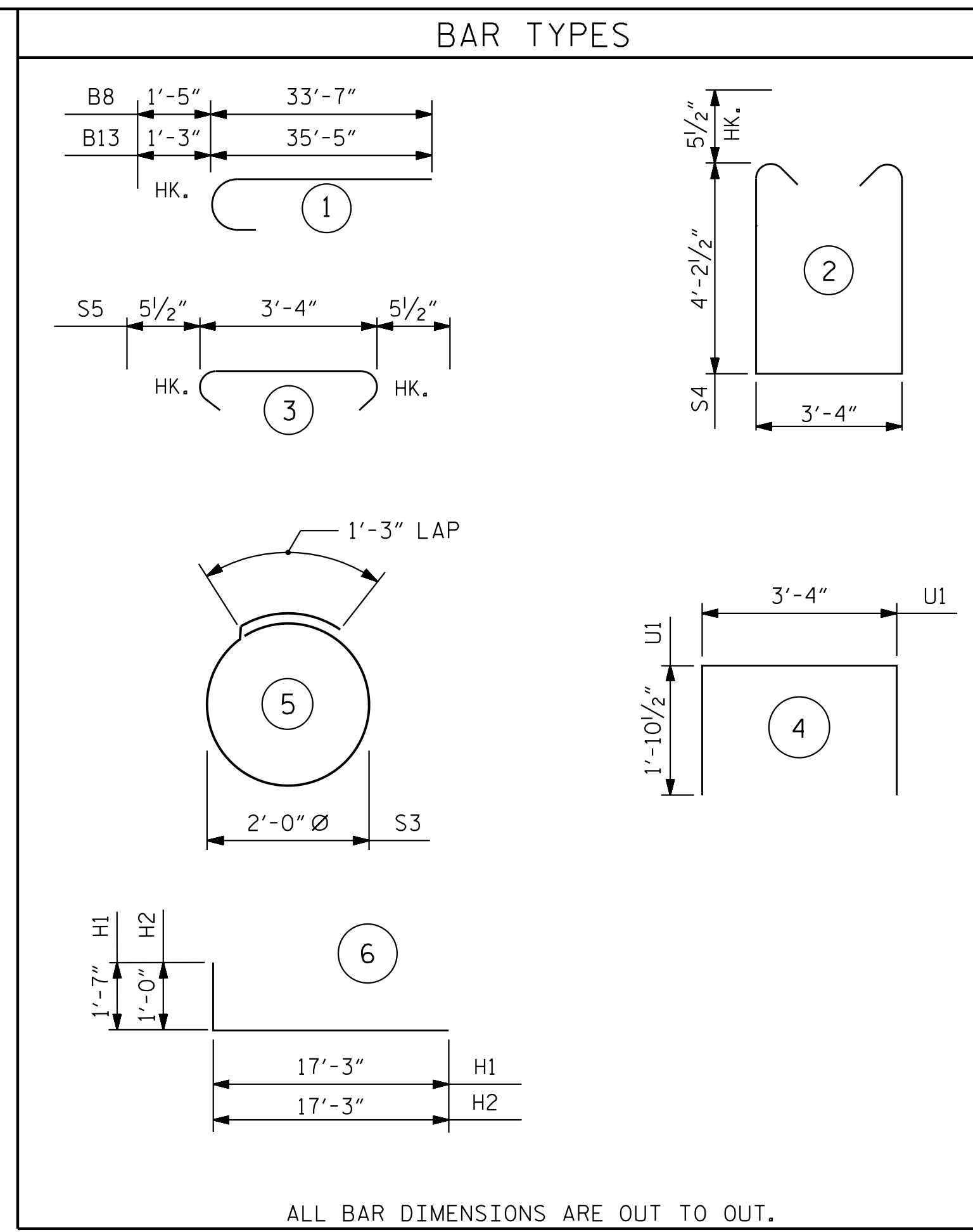
BAGGED STONE SHALL REMAIN IN PLACE UNTIL THE ENGINEER DIRECTS THAT IT BE REMOVED. THE CONTRACTOR SHALL REMOVE AND DISPOSE OF SILT ACCUMULATIONS AT BAGGED STONE WHEN SO DIRECTED BY THE ENGINEER. BAGS SHALL BE REMOVED AND REPLACED WHENEVER THE ENGINEER DETERMINES THAT THEY HAVE DETERIORATED AND LOST THEIR EFFECTIVENESS.

NO SEPARATE PAYMENT WILL BE MADE FOR THIS WORK AND THE ENTIRE COST OF THIS WORK SHALL BE INCLUDED IN THE UNIT CONTRACT PRICE BID FOR THE SEVERAL PAY ITEMS.

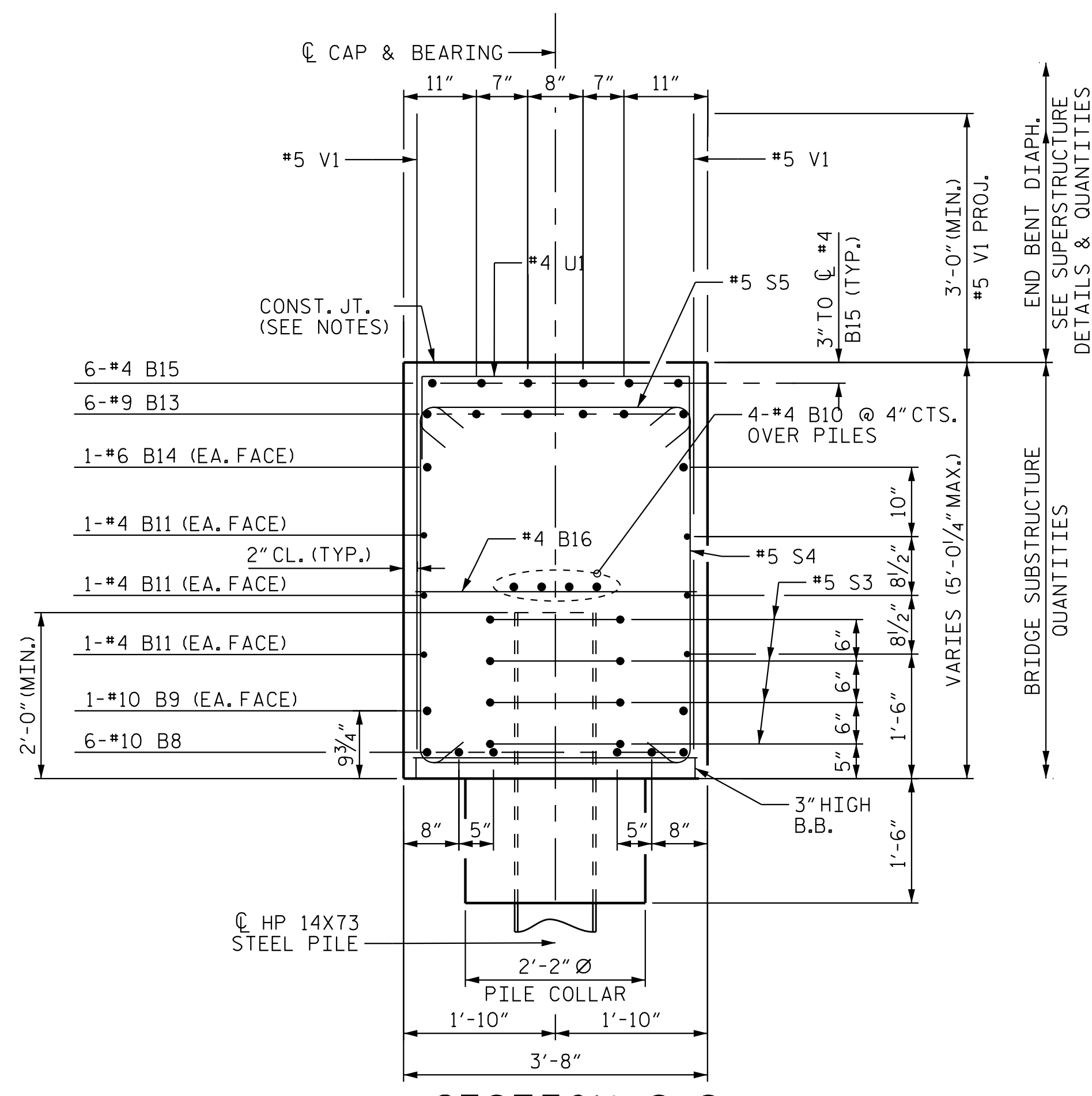
TEMPORARY DRAINAGE AT END BENT



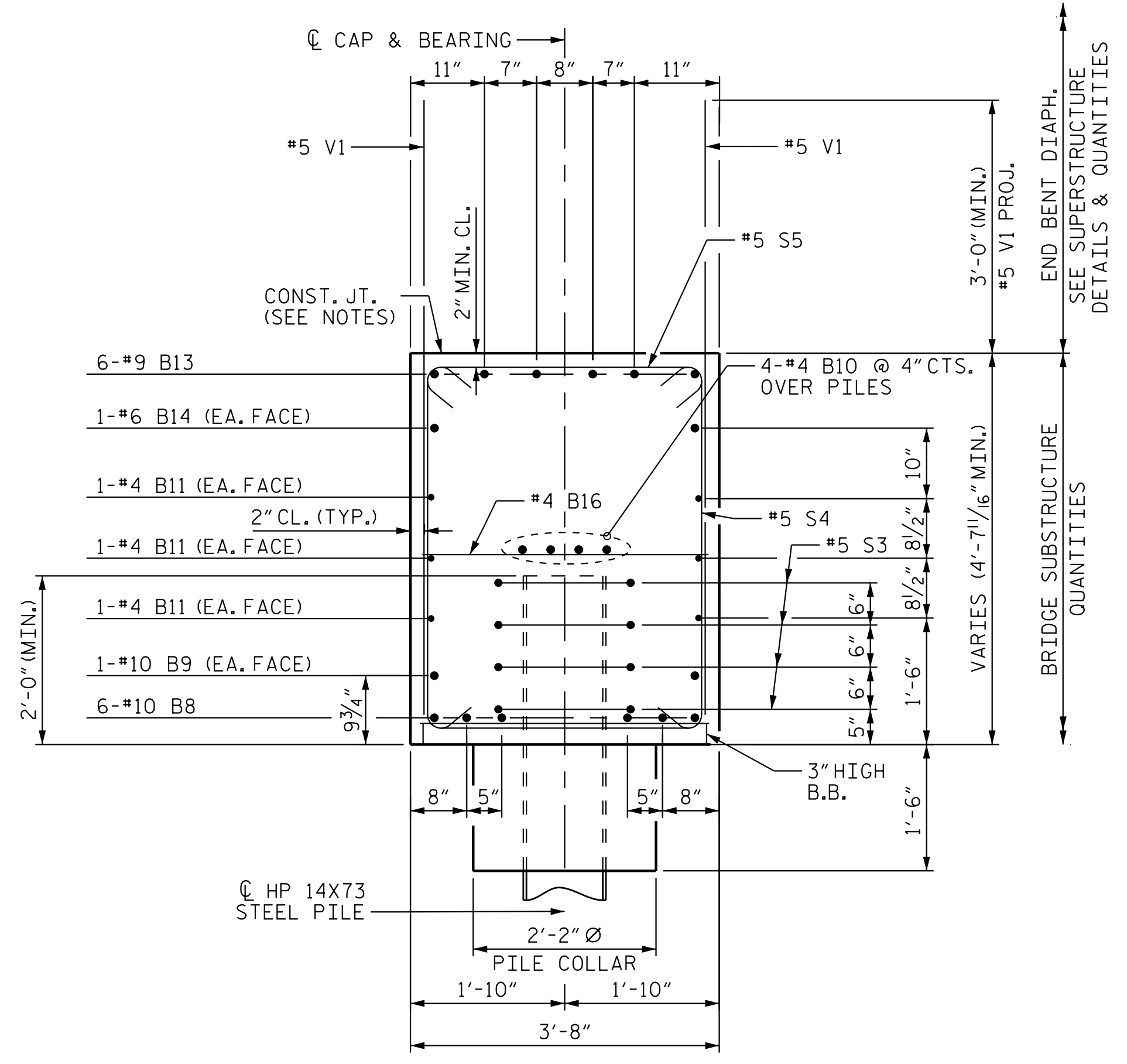
PILE SPLICE DETAILS



BILL OF MATERIAL					
END BENT 2 - STAGE II					
BAR NO.	SIZE	TYPE	LENGTH	WEIGHT	
B8	#6	#10	1	35'-0"	904
B9	2	#10	STR	34'-7"	298
B10	4	#4	STR	35'-5"	95
B11	6	#4	STR	35'-5"	142
B12	6	#9	STR	4'-2"	86
B13	6	#9	1	36'-8"	748
B14	2	#6	STR	33'-0"	100
B15	6	#4	STR	8'-1"	33
B16	10	#4	STR	3'-4"	23
H1	28	#7	6	18'-10"	1078
H2	28	#7	6	18'-3"	1045
K1	4	#4	STR	2'-3"	7
K2	14	#4	STR	5'-4"	50
S3	24	#4	5	7'-7"	122
S4	41	#5	2	12'-8"	542
S5	35	#5	3	4'-3"	156
U1	6	#4	4	7'-1"	29
V1	52	#5	STR	7'-5"	403
V3	39	#5	STR	11'-8"	475
REINFORCING STEEL					LBS. 6,353
CLASS A CONCRETE BREAKDOWN:					
POUR#3: CAP, COLLARS, & WINGS				C.Y.	27.3
POUR#4: UPPER WINGS				C.Y.	7.0
CLASS A CONCRETE TOTAL				C.Y.	34.3



SECTION C-C
SEE "END BENT 2", SHEET 2 OF 5.



SECTION D-D
SEE "END BENT 2", SHEET 2 OF 5.

NOTES

TOP SURFACE AREAS OF THE END BENT CAP SHALL BE KEPT CLEAN AND FREE OF LAITANCE.

ROUGH FLOAT AND ROUGHEN THE TOP OF THE END BENT CAP UNDER END BENT DIAPHRAGM TO PROVIDE MIN. SURFACE AMPLITUDE OF 1/4", EXCEPT UNDER BEARING AREAS.

PROJECT NO. R-2707D

CLEVELAND COUNTY

STATION: 849+00.00 -L-

SHEET 5 OF 5

STATE OF NORTH CAROLINA
DEPARTMENT OF TRANSPORTATION
RALEIGH

SUBSTRUCTURE

END BENT 2 DETAILS (STAGE II)

(LEFT LANE)



REVISIONS						SHEET NO.
NO.	BY:	DATE:	NO.	BY:	DATE:	S5-52
1			3			TOTAL SHEETS
2			4			56

DOCUMENT NOT CONSIDERED FINAL UNLESS ALL SIGNATURES COMPLETED

Stantec Consulting Services Inc.
801 Jones Franklin Road
Suite 300
Raleigh, NC 27606
Tel. (919) 851-6866
Fax. (919) 851-7024
www.stantec.com
License No. F-0672

DRAWN BY: J. B. GEILE DATE: 01/08/23

CHECKED BY: S. S. POOLE DATE: 01/10/23

DESIGN ENGINEER OF RECORD: S.S. POOLE DATE: 05/09/23

5/9/2023 2:44:05 PM jHogenbush

c:\pvt\work\king\gms55461\R2707D-SMU-E205-220102.dgn