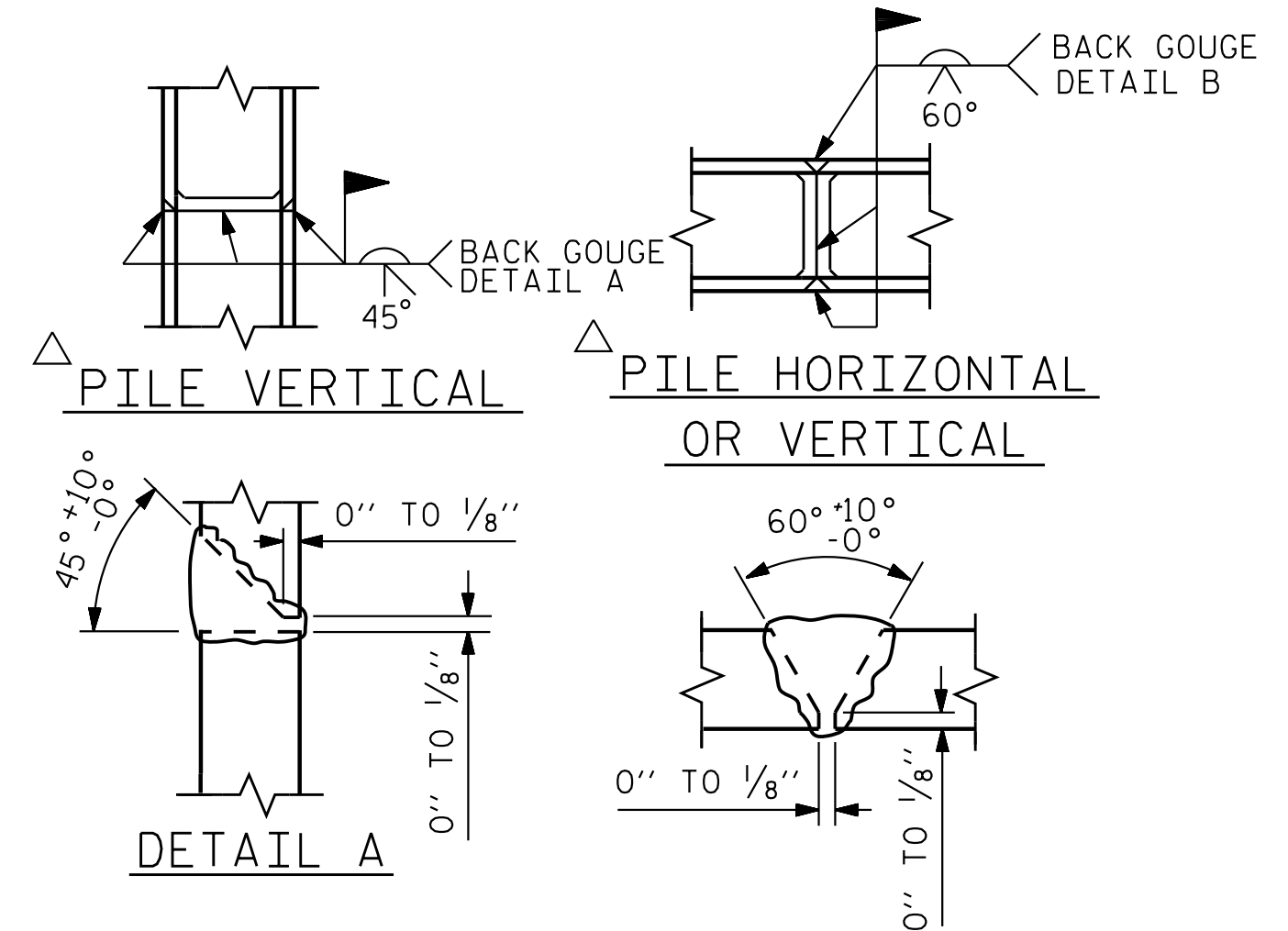


BAGGED STONE AND PIPE SHALL BE PLACED IMMEDIATELY AFTER COMPLETION OF END BENT EXCAVATION. PIPE MAY BE EITHER CONCRETE, CORRUGATED STEEL, CORRUGATED ALUMINUM ALLOY, OR CORRUGATED PLASTIC. PERFORATED PIPE WILL NOT BE ALLOWED.

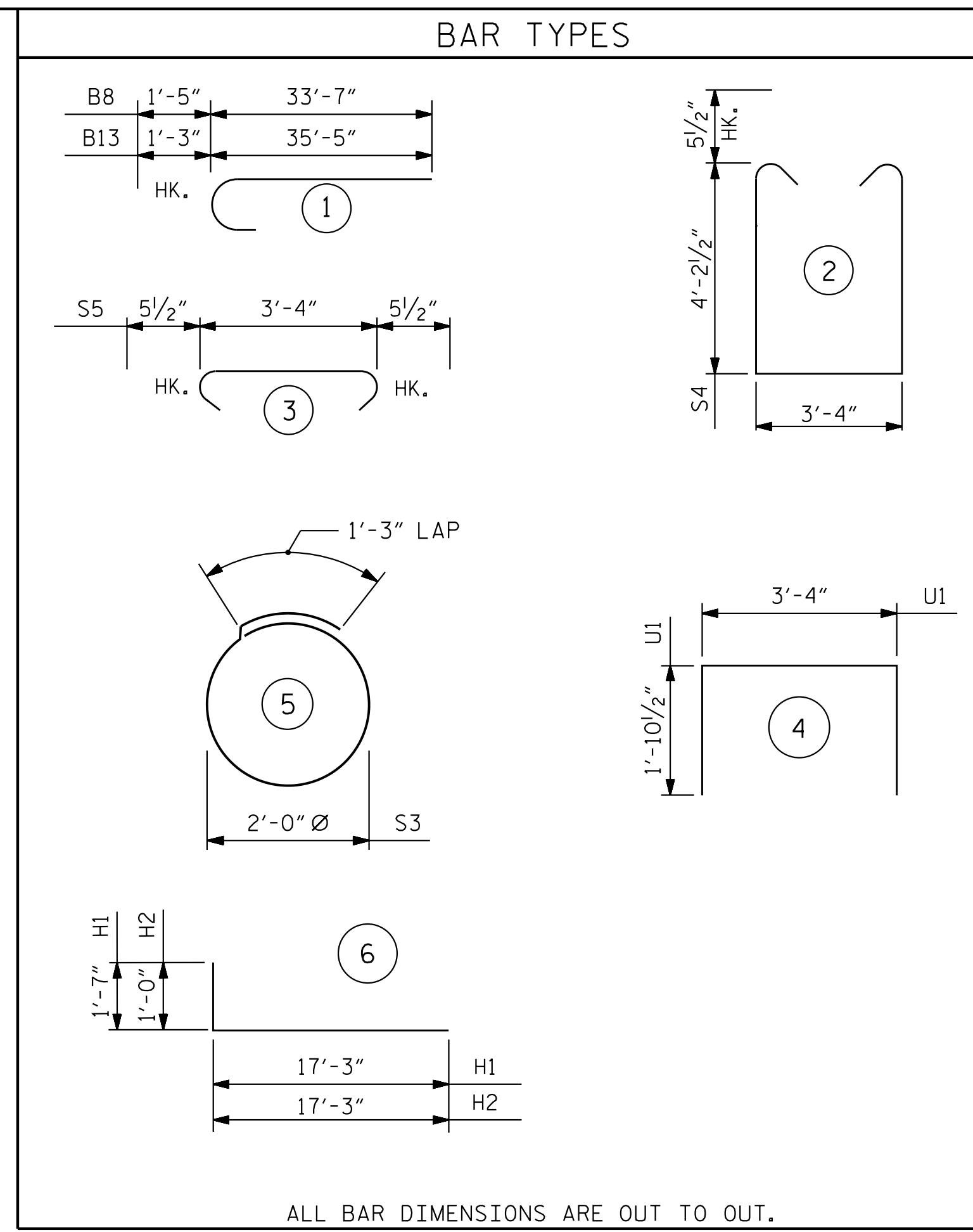
BAGGED STONE SHALL REMAIN IN PLACE UNTIL THE ENGINEER DIRECTS THAT IT BE REMOVED. THE CONTRACTOR SHALL REMOVE AND DISPOSE OF SILT ACCUMULATIONS AT BAGGED STONE WHEN SO DIRECTED BY THE ENGINEER. BAGS SHALL BE REMOVED AND REPLACED WHENEVER THE ENGINEER DETERMINES THAT THEY HAVE DETERIORATED AND LOST THEIR EFFECTIVENESS.

NO SEPARATE PAYMENT WILL BE MADE FOR THIS WORK AND THE ENTIRE COST OF THIS WORK SHALL BE INCLUDED IN THE UNIT CONTRACT PRICE BID FOR THE SEVERAL PAY ITEMS.

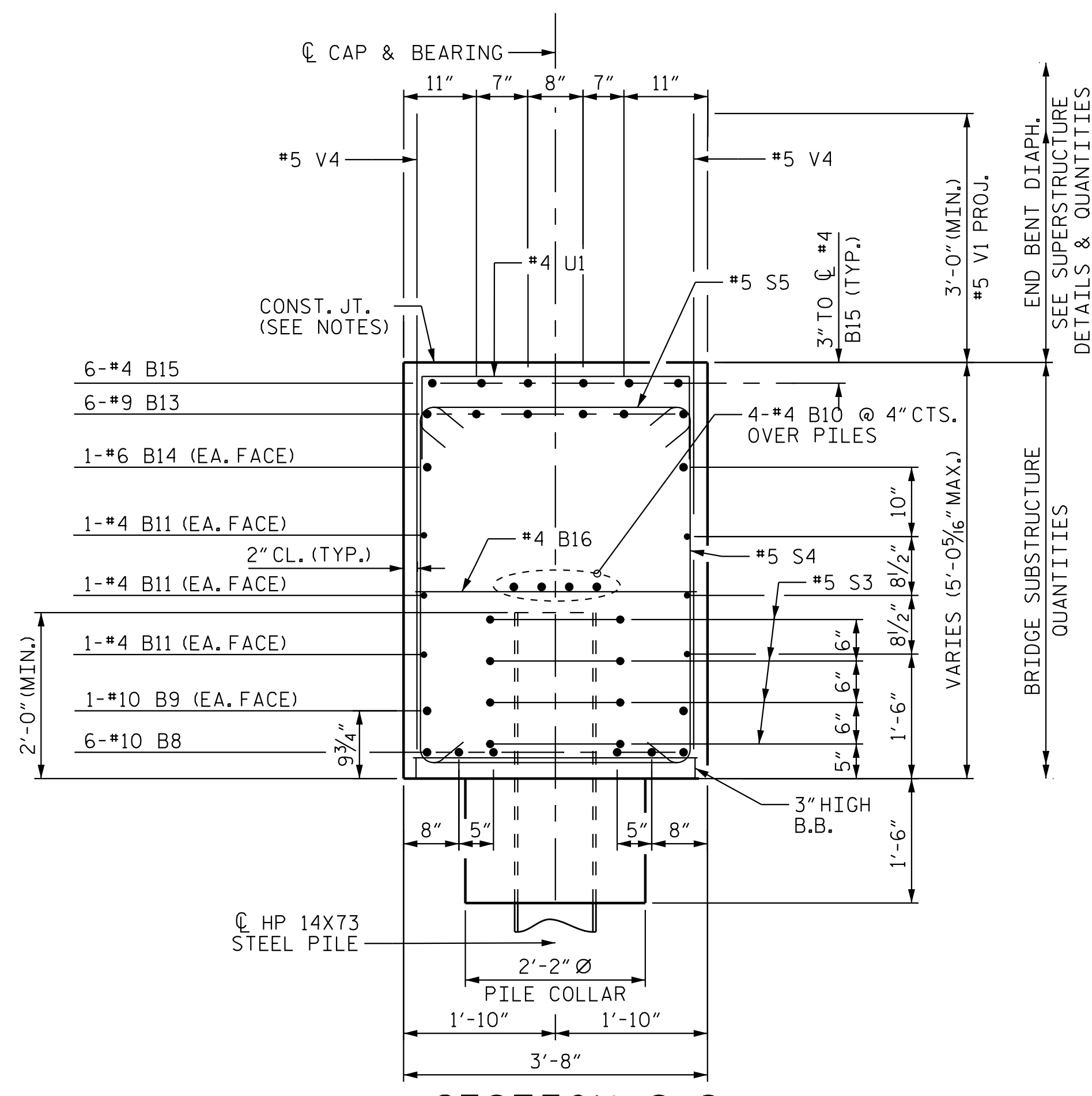
TEMPORARY DRAINAGE AT END BENT



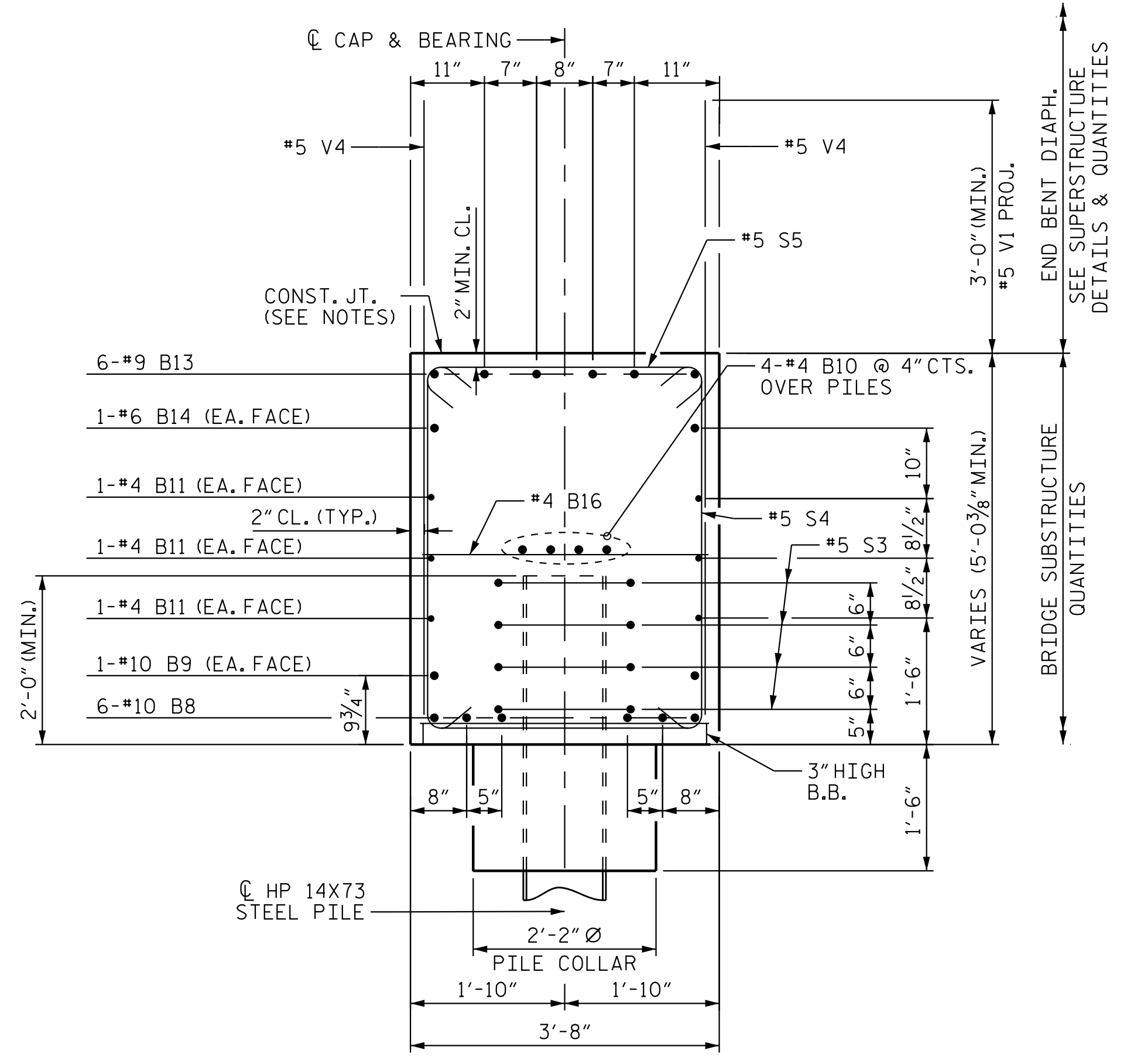
PILE SPLICE DETAILS



| BILL OF MATERIAL | | | | | |
|-------------------------------|------|------|--------|---------|------------|
| END BENT 1 - STAGE II | | | | | |
| BAR NO. | SIZE | TYPE | LENGTH | WEIGHT | |
| B8 | 6 | #10 | 1 | 35'-0" | 904 |
| B9 | 2 | #10 | STR | 34'-7" | 298 |
| B10 | 4 | #4 | STR | 35'-5" | 95 |
| B11 | 6 | #4 | STR | 35'-5" | 142 |
| B12 | 6 | #9 | STR | 4'-2" | 85 |
| B13 | 6 | #9 | 1 | 36'-8" | 748 |
| B14 | 2 | #6 | STR | 33'-0" | 100 |
| B15 | 6 | #4 | STR | 8'-1" | 33 |
| B16 | 10 | #4 | STR | 3'-4" | 23 |
| | | | | | |
| H1 | 28 | #7 | 6 | 18'-10" | 1078 |
| H2 | 28 | #7 | 6 | 18'-3" | 1045 |
| | | | | | |
| K1 | 4 | #4 | STR | 2'-3" | 7 |
| K2 | 14 | #4 | STR | 5'-4" | 50 |
| | | | | | |
| S3 | 24 | #4 | 5 | 7'-7" | 122 |
| S4 | 41 | #5 | 2 | 12'-8" | 542 |
| S5 | 35 | #5 | 3 | 4'-3" | 156 |
| | | | | | |
| U1 | 6 | #4 | 4 | 7'-1" | 29 |
| | | | | | |
| V3 | 39 | #5 | STR | 11'-8" | 475 |
| V4 | 52 | #5 | STR | 7'-9" | 421 |
| | | | | | |
| REINFORCING STEEL | | | | | LBS. 6,353 |
| | | | | | |
| CLASS A CONCRETE BREAKDOWN: | | | | | |
| POUR#3: CAP, COLLARS, & WINGS | | | | C.Y. | 27.3 |
| POUR#4: UPPER WINGS | | | | C.Y. | 7.0 |
| CLASS A CONCRETE TOTAL | | | | C.Y. | 34.3 |



SECTION C-C
SEE "END BENT 1", SHEET 2 OF 5.



SECTION D-D
SEE "END BENT 1", SHEET 2 OF 5.

NOTES

TOP SURFACE AREAS OF THE END BENT CAP SHALL BE KEPT CLEAN AND FREE OF LAITANCE.

ROUGH FLOAT AND ROUGHEN THE TOP OF THE END BENT CAP UNDER END BENT DIAPHRAGM TO PROVIDE MIN. SURFACE AMPLITUDE OF 1/4", EXCEPT UNDER BEARING AREAS.

PROJECT NO. R-2707D

CLEVELAND COUNTY

STATION: 849+00.00 -L-

SHEET 5 OF 5

STATE OF NORTH CAROLINA
DEPARTMENT OF TRANSPORTATION
RALEIGH

SUBSTRUCTURE

END BENT 1 DETAILS (STAGE II)

(LEFT LANE)



| REVISIONS | | | | | | SHEET NO. S5-39 |
|-----------|-----|-------|-----|-----|-------|--------------------|
| NO. | BY: | DATE: | NO. | BY: | DATE: | |
| 1 | | | 3 | | | TOTAL SHEETS 56 |
| 2 | | | 4 | | | |

DOCUMENT NOT CONSIDERED FINAL UNLESS ALL SIGNATURES COMPLETED

5/9/2023 2:05:51PM jHogenbush
 c:\pvt\wv\king\dm55461\R2707D-SMU-EI05-220102.dgn

Stantec Consulting Services Inc.
801 Jones Franklin Road
Suite 300
Raleigh, NC 27606
Tel. (919) 851-6866
Fax. (919) 851-7024
www.stantec.com
License No. F-0672

DRAWN BY: J. B. GEILE DATE: 01/08/23 DESIGN ENGINEER OF RECORD: S.S. POOLE DATE: 05/09/23

CHECKED BY: S. S. POOLE DATE: 01/10/23