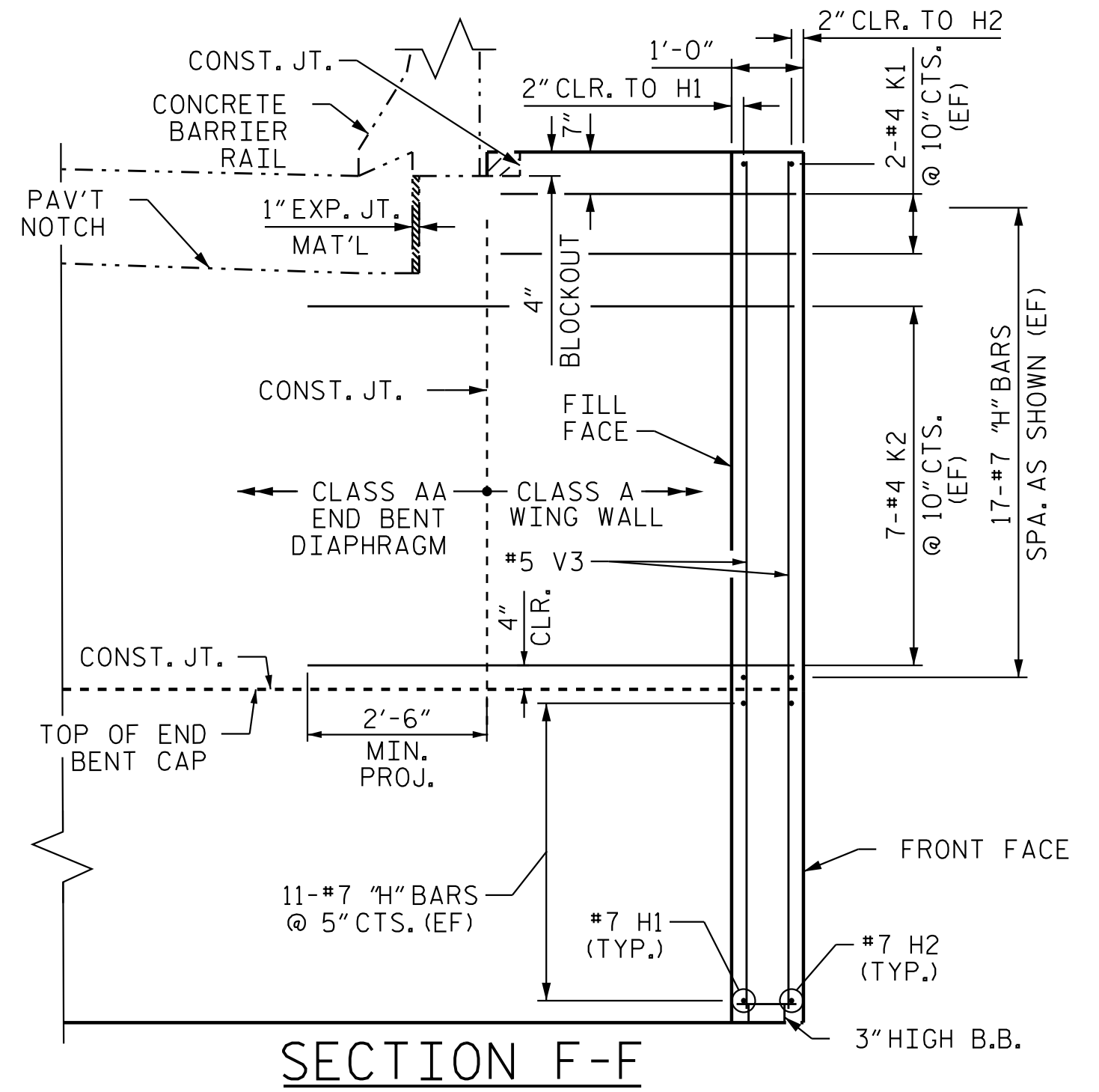
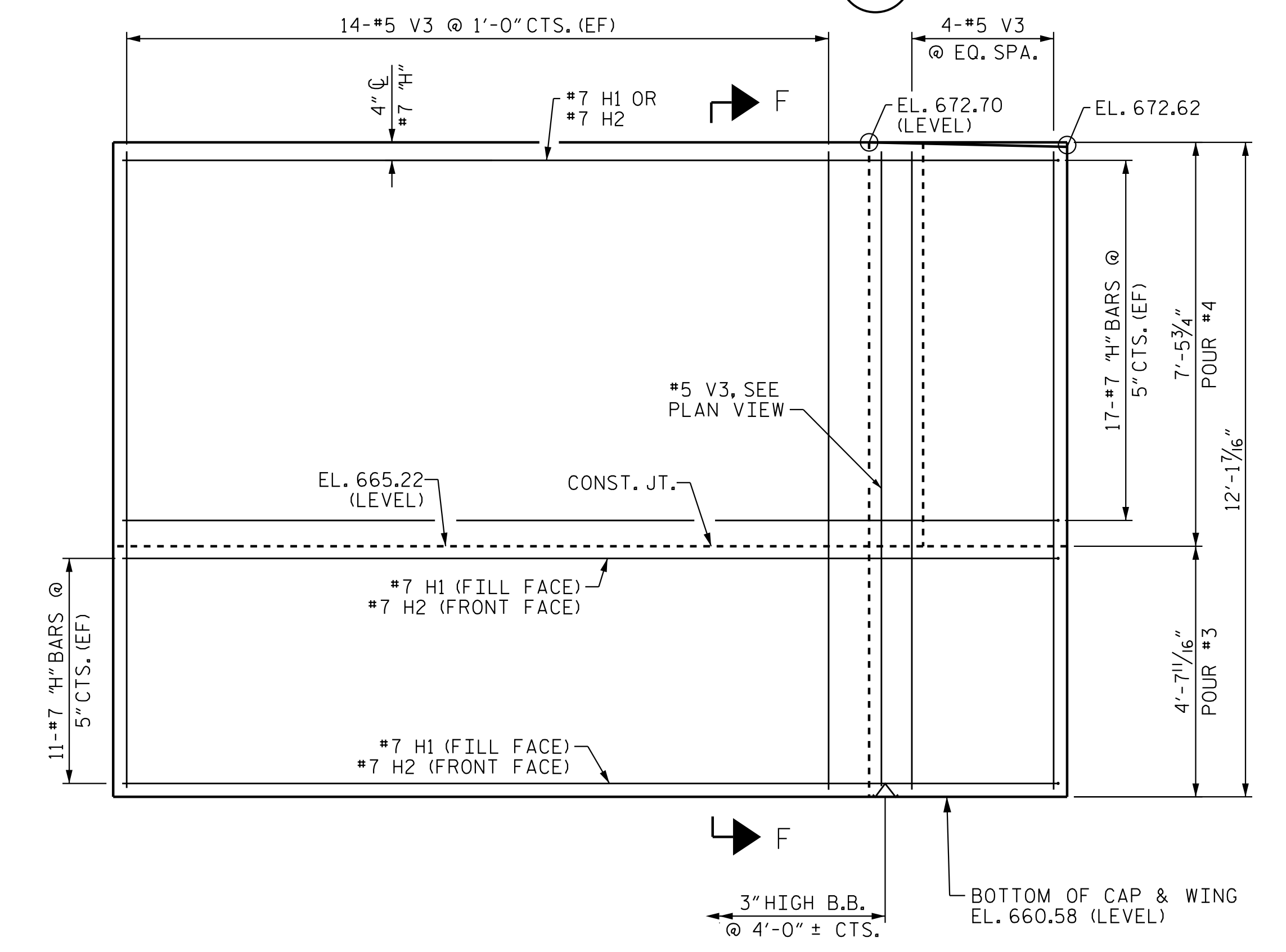
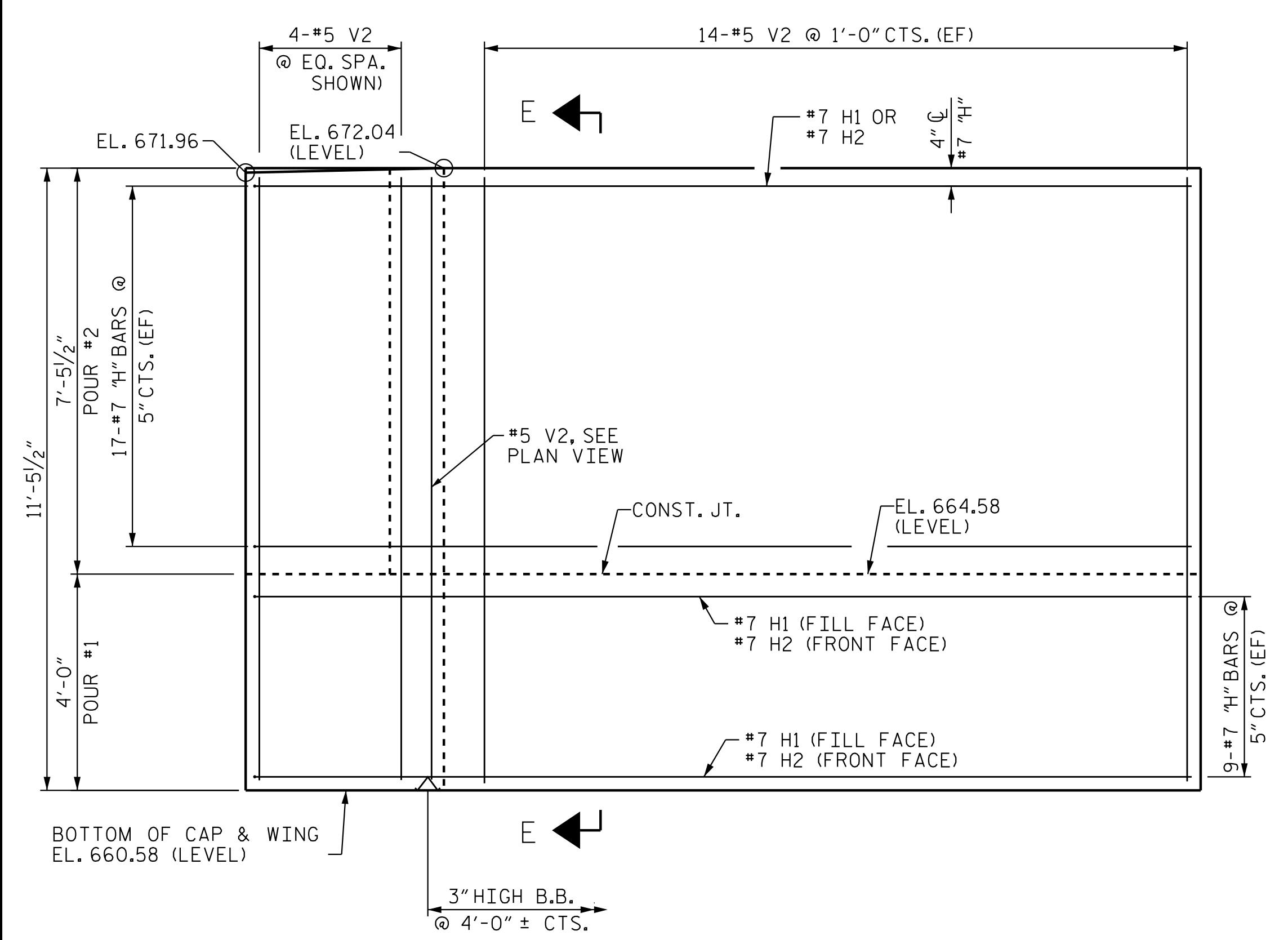
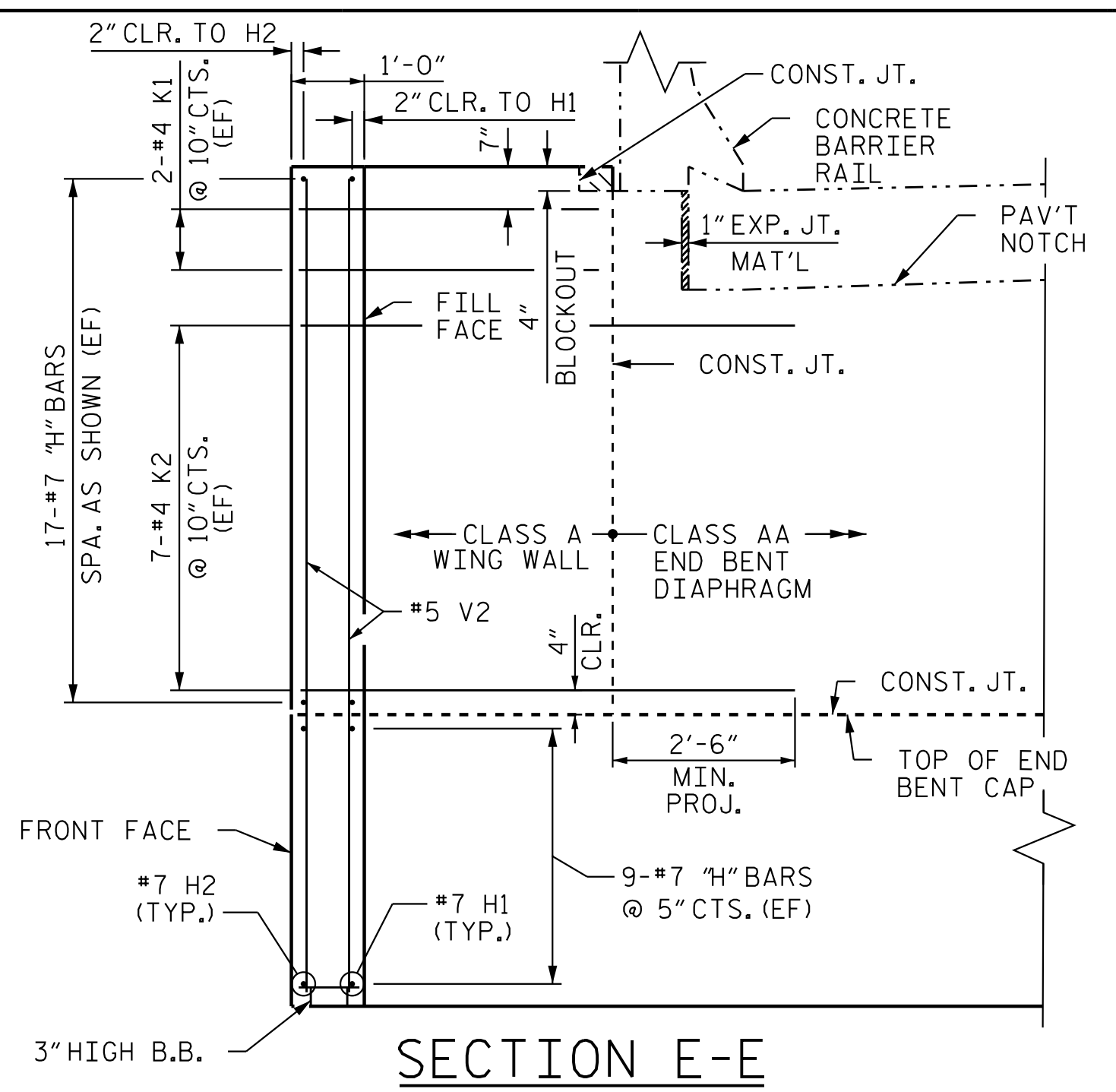
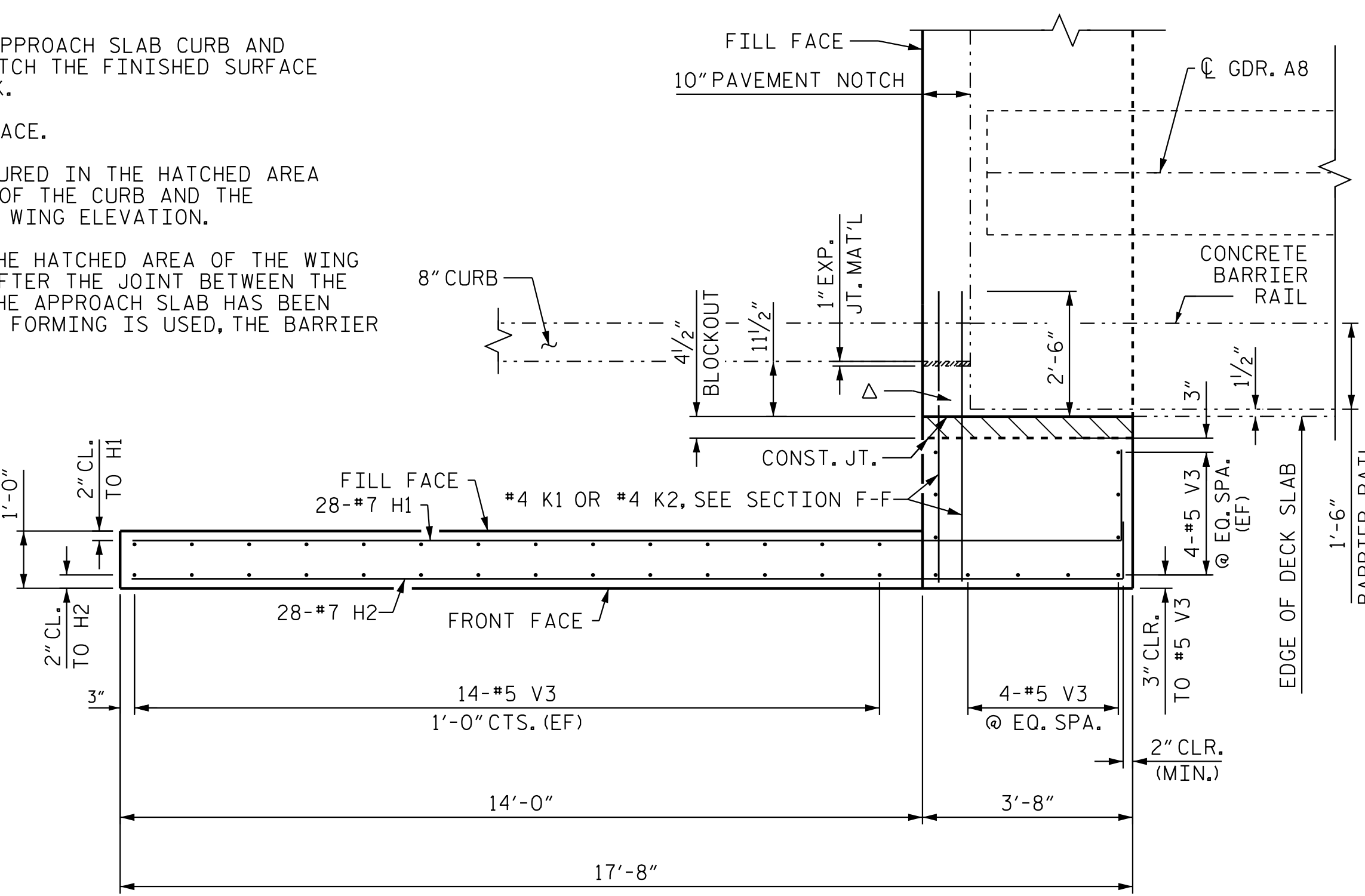
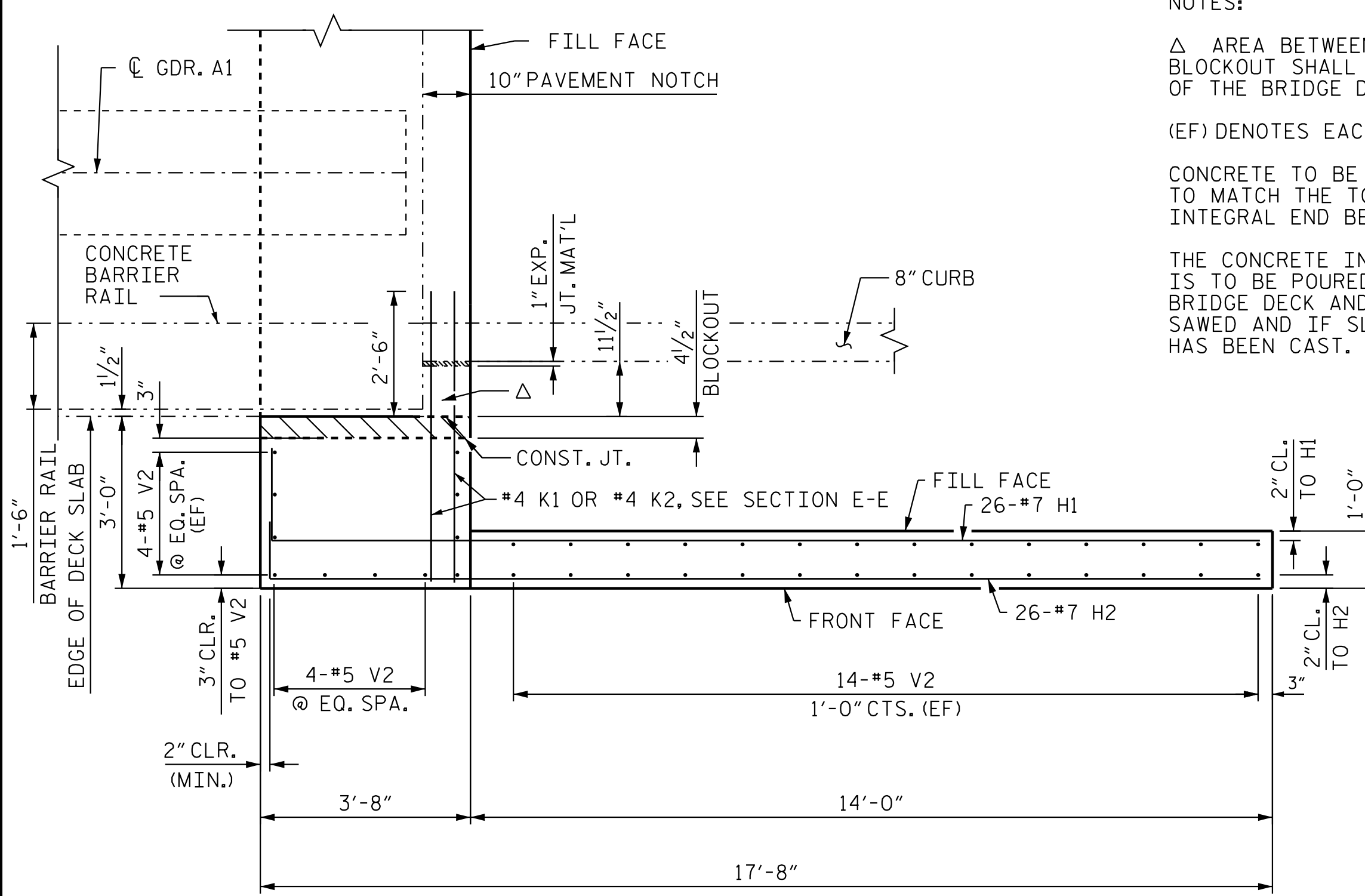


NOTES:
 Δ AREA BETWEEN APPROACH SLAB CURB AND BLOCKOUT SHALL MATCH THE FINISHED SURFACE OF THE BRIDGE DECK.
 (EF) DENOTES EACH FACE.
 CONCRETE TO BE POURED IN THE HATCHED AREA TO MATCH THE TOP OF THE CURB AND THE INTEGRAL END BENT WING ELEVATION.
 THE CONCRETE IN THE HATCHED AREA OF THE WING IS TO BE POURED AFTER THE JOINT BETWEEN THE BRIDGE DECK AND THE APPROACH SLAB HAS BEEN SAWED AND IF SLIP FORMING IS USED, THE BARRIER HAS BEEN CAST.



PROJECT NO. R-2707D
 CLEVELAND COUNTY
 STATION: 849+00.00 -L-

SHEET 3 OF 5
 DEPARTMENT OF TRANSPORTATION
 RALEIGH
 SUBSTRUCTURE
 END BENT 1 WING
 DETAILS
 (LEFT LANE)



REVISIONS						SHEET NO. S5-37
NO.	BY:	DATE:	NO.	BY:	DATE:	
1			3			TOTAL SHEETS 56
2			4			

DOCUMENT NOT CONSIDERED FINAL UNLESS ALL SIGNATURES COMPLETED

Stantec Consulting Services Inc.
 801 Jones Franklin Road
 Suite 300
 Raleigh, NC 27606
 Tel. (919) 851-6866
 Fax. (919) 851-7024
 www.stantec.com
 License No. F-0672

DRAWN BY: J. B. GEILE DATE: 01/08/23
 CHECKED BY: S.S. POOLE DATE: 01/10/23
 DESIGN ENGINEER OF RECORD: S.S. POOLE DATE: 05/09/23

5/9/2023 2:04:40 PM jHogenbush
 c:\pvt\wv\king\dms55461\R2707D-SMU-E03-220102.dgn