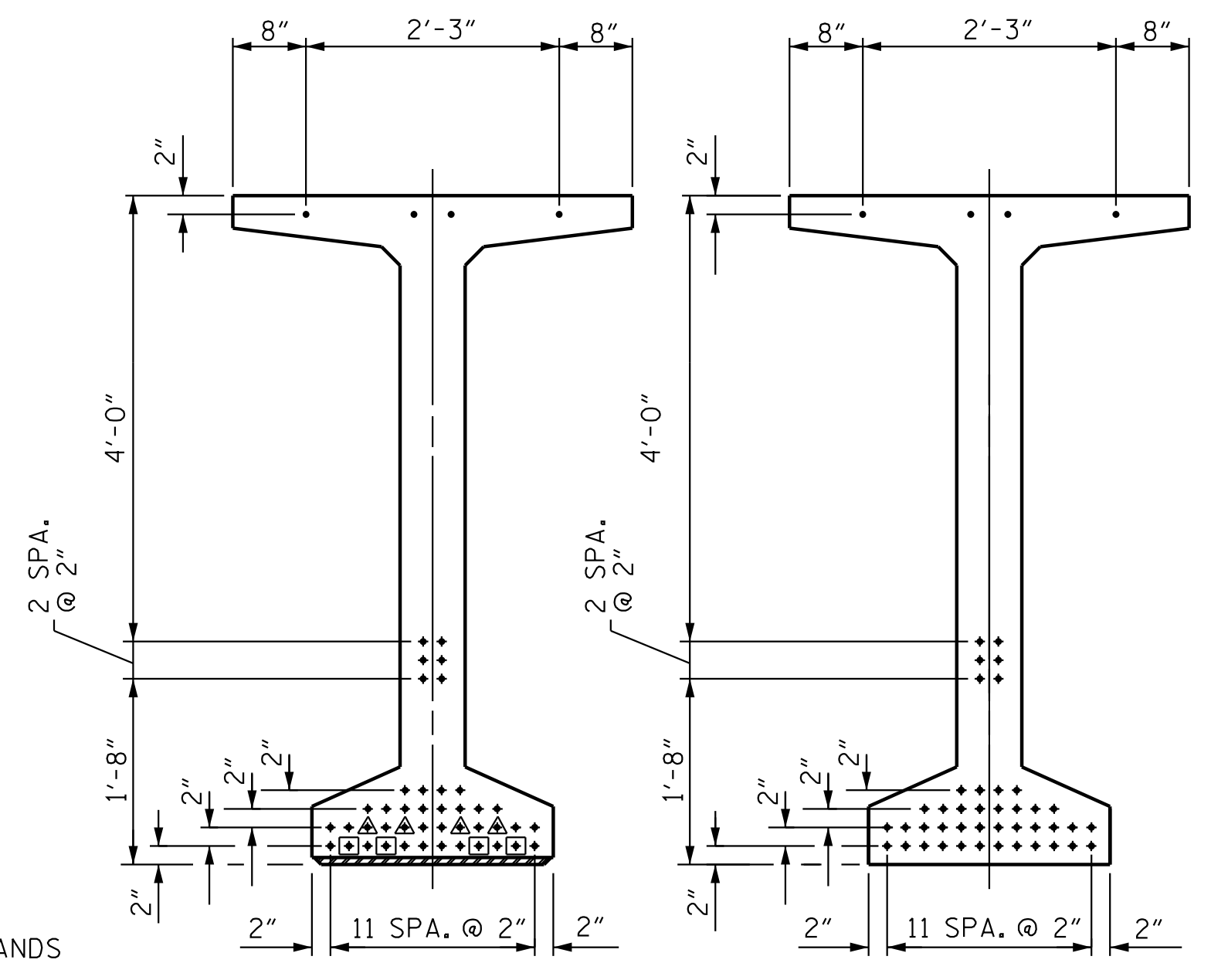


DEBONDING LEGEND

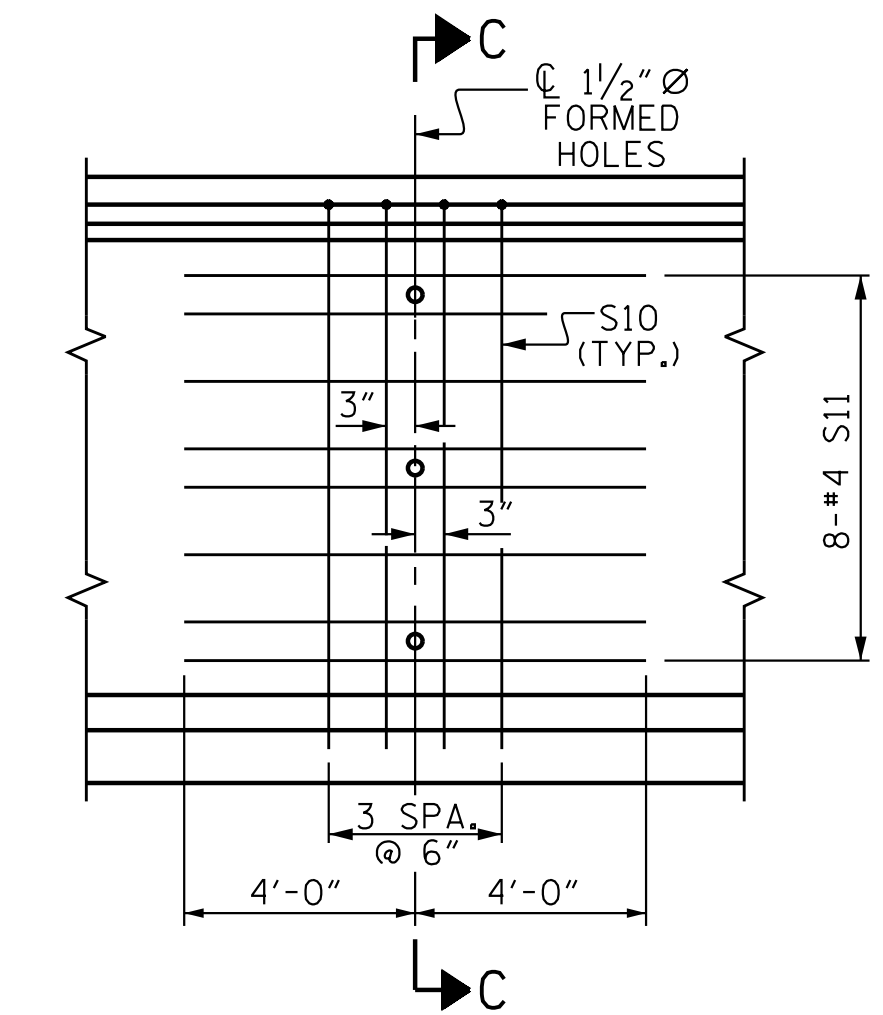
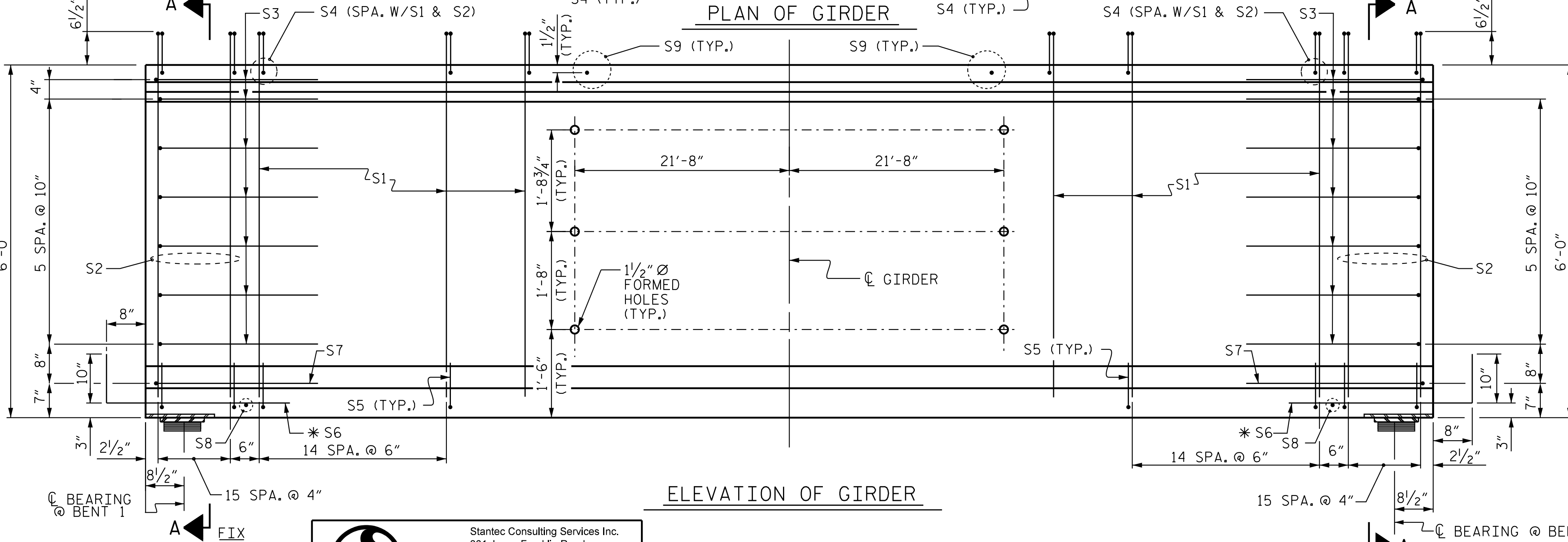
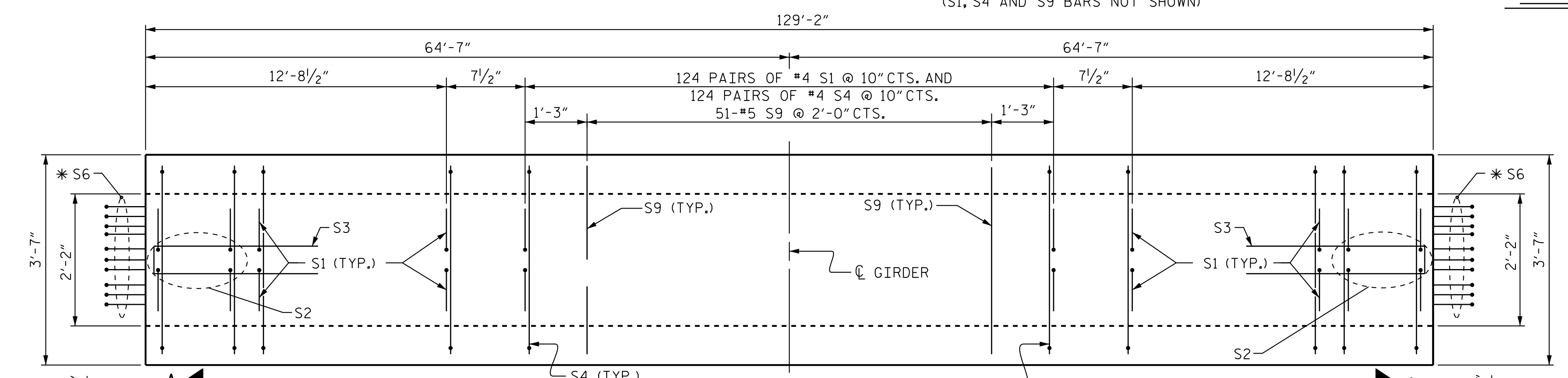
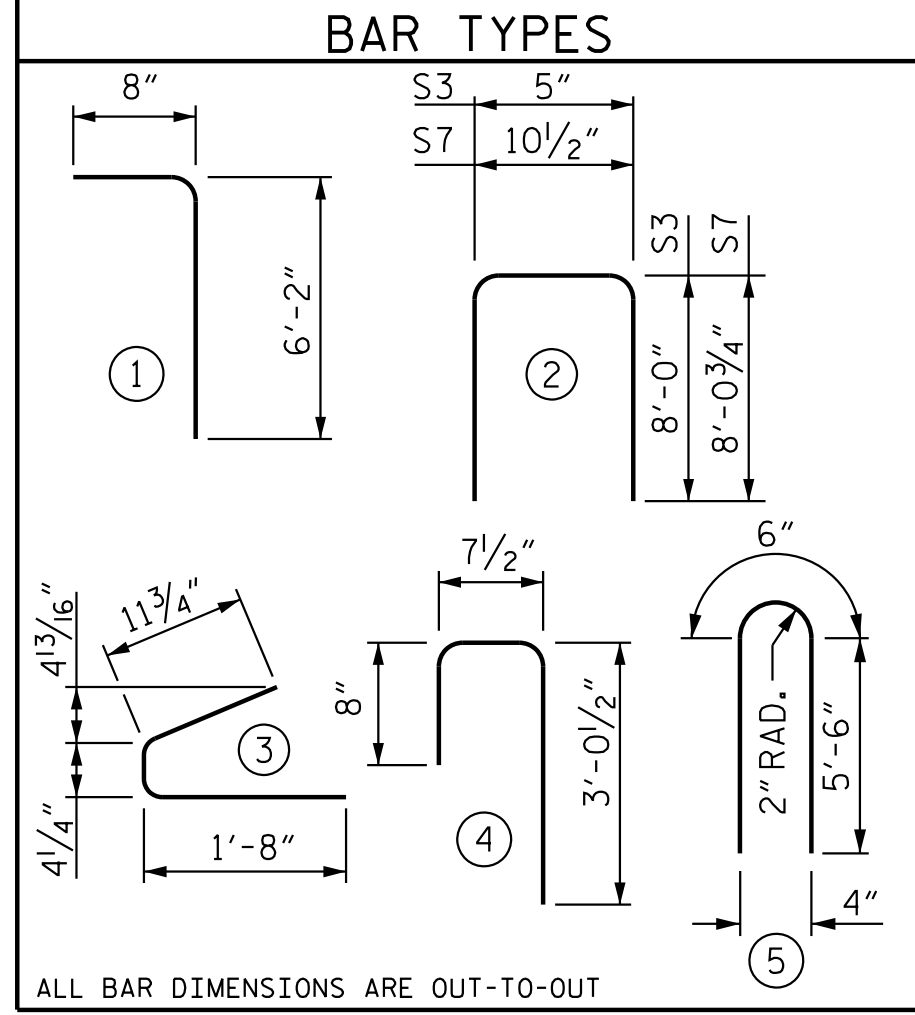
- FULLY BONDED STRANDS
- ▲ STRANDS DEBONDED FOR 12'-0" FROM END OF GIRDER
- STRANDS DEBONDED FOR 16'-0" FROM END OF GIRDER



0.6" Ø L. R. GRADE 270 STRANDS		
AREA (SQUARE INCHES)	ULTIMATE STRENGTH (LBS. PER STRAND)	APPLIED PRESTRESS (LBS. PER STRAND)
0.217	58,600	43,950

REINFORCING STEEL FOR ONE GDR						
BAR	NUMBER	SIZE	TYPE	LENGTH	WEIGHT	
S1	308	#4	1	6'-10"	1406	
S2	64	#6	1	6'-10"	657	
S3	14	#4	2	16'-5"	154	
S4	380	#4	4	4'-4"	1100	
S5	132	#4	3	3'-0"	265	
* S6	20	#5	STR	3'-8"	77	
S7	2	#5	2	17'-0"	36	
S8	2	#3	STR	1'-10"	2	
S9	51	#5	STR	3'-3"	173	
S10	8	#5	5	11'-6"	96	
S11	16	#4	STR	8'-0"	86	

* NOTE: S6 BARS SHALL BE BENT BEFORE SHIPMENT. HEAT BENDING SHALL NOT BE ALLOWED.



SHOWING INTERMEDIATE STEEL DIAPHRAGM REINFORCING STEEL FOR ALL GIRDERS

QUANTITIES FOR ONE GIRDER			
REINFORCING STEEL	10,000 PSI CONCRETE		0.6" Ø L.R. STRANDS
	LB.	C.Y.	No.
	4052	27.7	46

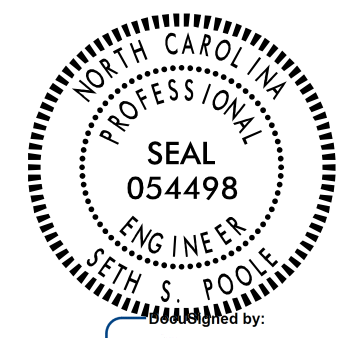
GIRDERS REQUIRED		
NUMBER	LENGTH	TOTAL LENGTH
8	129'-2"	1,033'-4"

PROJECT NO. R-2707D
 CLEVELAND COUNTY
 STATION: 849+00.00 -L-

SHEET 2 OF 5

STATE OF NORTH CAROLINA
 DEPARTMENT OF TRANSPORTATION
 RALEIGH

MODIFIED 72" PRESTRESSED CONCRETE GIRDER
 CONTINUOUS FOR LIVE LOAD
 SPAN B (LEFT LANE)

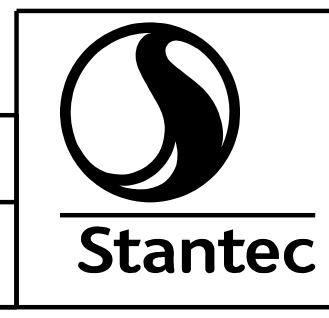


DOCUMENT NOT CONSIDERED FINAL UNLESS ALL SIGNATURES COMPLETED

REVISIONS						SHEET NO. S5-23
NO.	BY:	DATE:	NO.	BY:	DATE:	
1			3			TOTAL SHEETS 56
2			4			

5/9/2023 2:09:05 PM jHagenbush
 5/9/2023 2:09:05 PM jHagenbush
 c:\pvt\working\mms55461\N2707D-SMU_C02-220102-revision.dgn

ASSEMBLED BY: J. B. GEILE
 CHECKED BY: S. S. POOLE
 DATE: 09/18/18
 DATE: 12/10/22



Stantec Consulting Services Inc.
 801 Jones Franklin Road
 Suite 300
 Raleigh, NC 27606
 Tel. (919) 851-6866
 Fax. (919) 851-7024
 www.stantec.com
 License No. F-0672

DESIGN ENGINEER OF RECORD: S.S. POOLE DATE: 05/09/23