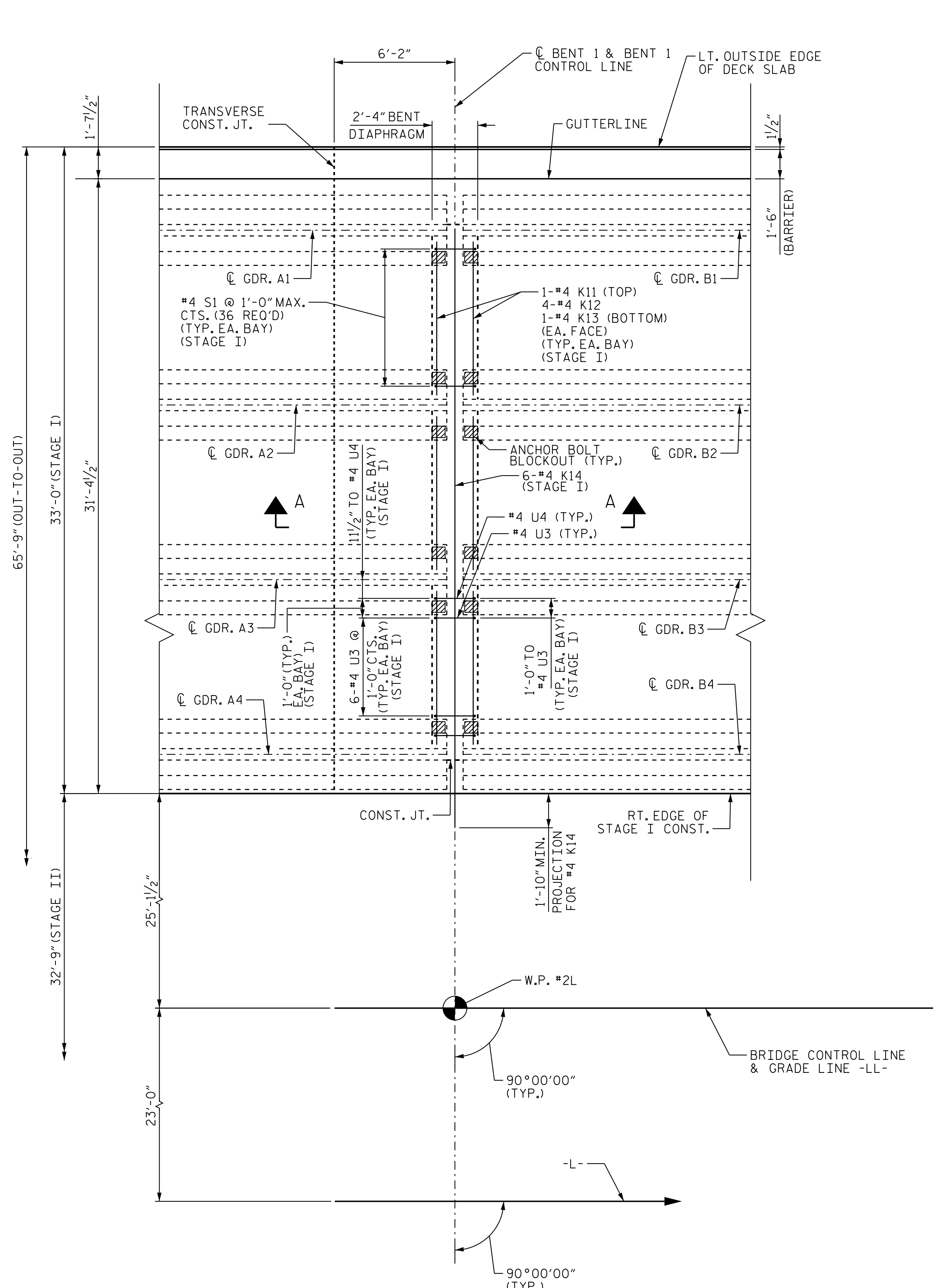
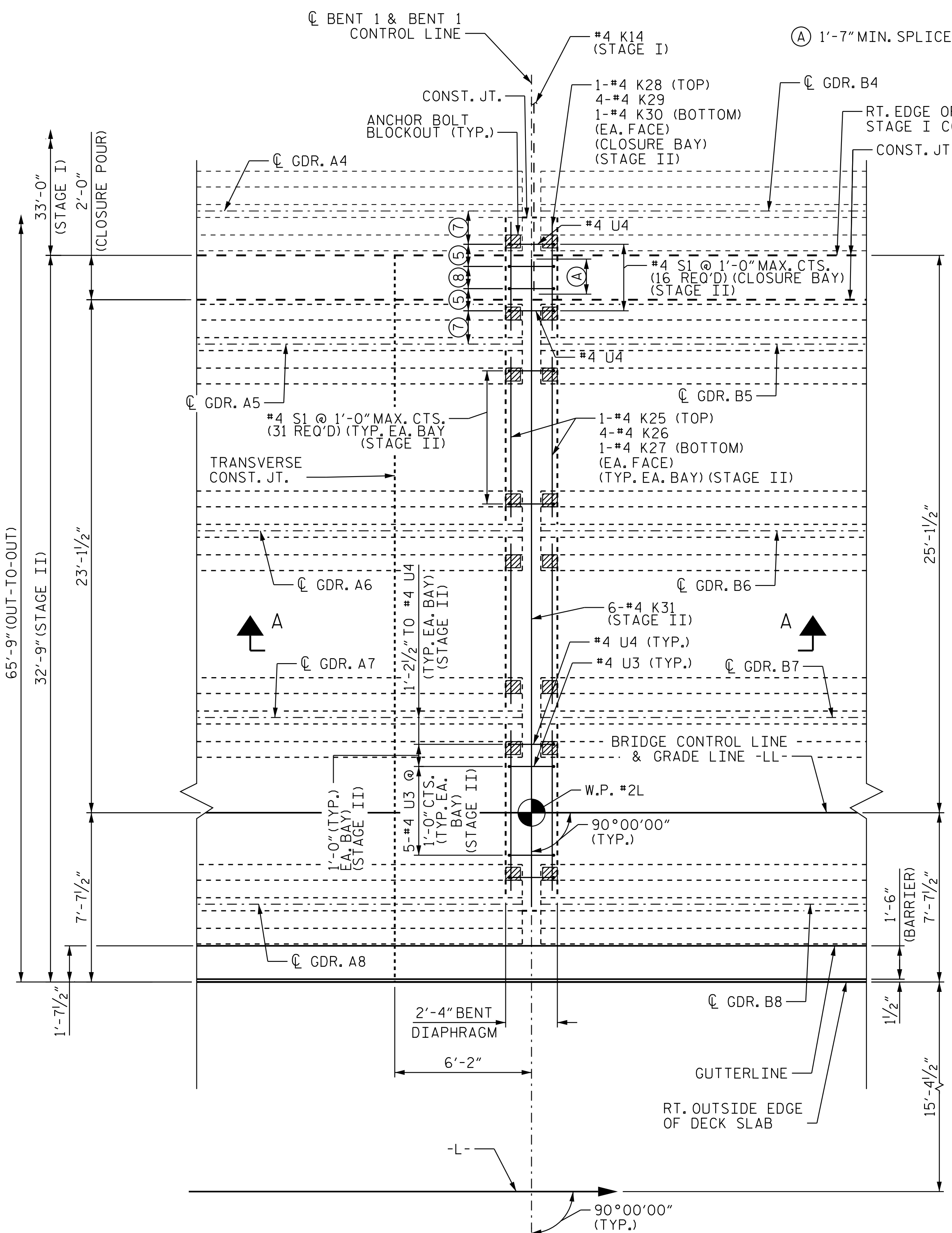


5/9/2023 2:08:44 PM jHagenbush
5/9/2023 2:08:44 PM jHagenbush
5/9/2023 2:08:44 PM jHagenbush



STAGE I



STAGE II

- ⑤ 1'-0" TO #4 U3 (STAGE II)
- ⑦ 1'-6" TO #4 U4 (CLOSURE BAY) (STAGE II)
- ⑧ 2-#4 U3 @ 1'-0" MAX. CTS. (CLOSURE BAY) (STAGE II)

NOTES:
FOR SECTION A-A, SEE "TYPICAL SECTION DETAILS", SHEET 5 OF 5.
▨ DENOTES CONC. BLOCKOUT, SEE END BENT SHEETS AND "TYPICAL SECTION DETAILS", SHEET 5 OF 5.

PROJECT NO. R-2707D
CLEVELAND COUNTY
STATION: 849+00.00 -L-

SHEET 8 OF 8

STATE OF NORTH CAROLINA
DEPARTMENT OF TRANSPORTATION
RALEIGH
SUPERSTRUCTURE
PLAN OF SPANS
DETAILS - INTERIOR
BENT DIAPHRAGMS
(LEFT LANE)

REVISIONS						SHEET NO. S5-20
NO.	BY:	DATE:	NO.	BY:	DATE:	
1			3			TOTAL SHEETS 56
2			4			



Stantec Consulting Services Inc.
801 Jones Franklin Road
Suite 300
Raleigh, NC 27606
Tel. (919) 851-6866
Fax. (919) 851-7024
www.stantec.com
License No. F-0672

DRAWN BY: J. B. GEILE DATE: 10/04/18
CHECKED BY: S. S. POOLE DATE: 12/10/22
DESIGN ENGINEER OF RECORD: S.S. POOLE DATE: 05/09/23

TYPICAL INTERIOR BENT
DIAPHRAGM REINFORCING DETAIL

DETAILS AT BENT 1 SHOWN.
DETAILS AT BENT 2 SIMILAR.

DOCUMENT NOT CONSIDERED
FINAL UNLESS ALL
SIGNATURES COMPLETED