

INTERIOR BENT DIAPHRAGM REINFORCING (STAGE I)
TYPICAL SECTION

- ① 5-#5 B5 (6 BR) @ 7" CTS (BOTT. OF SLAB) (STAGE I)
- ② 4-#5 B5 (6 BR) @ 7" CTS (BOTT. OF SLAB) (STAGE II)
- ③ 1'-0" TO #4 U3 (TYP. EA. BAY) (STAGE I)
- ④ 1 1/2" TO #4 U4 (TYP. EA. BAY) (STAGE I)
- ⑤ 1'-0" TO #4 U3 (STAGE II)
- ⑥ 1'-2 1/2" TO #4 U4 (TYP. EA. BAY) (STAGE II)
- ⑦ 1'-6" TO #4 U4 (CLOSURE BAY) (STAGE II)
- ⑧ 2-#4 U3 @ 1'-0" MAX. CTS. (CLOSURE BAY) (STAGE II)

NOTES
SEE "TYPICAL SECTION DETAILS", SHEET 5 OF 5 FOR ADDITIONAL NOTES.

• DENOTES CONTINUOUS LONGITUDINAL DECK REINFORCEMENT.
○ DENOTES NON-CONTINUOUS LONGITUDINAL DECK REINFORCEMENT.

#5 B5 (6 BR) MAY BE REPOSITIONED AS NECESSARY TO CLEAR PIPE DRAINS.

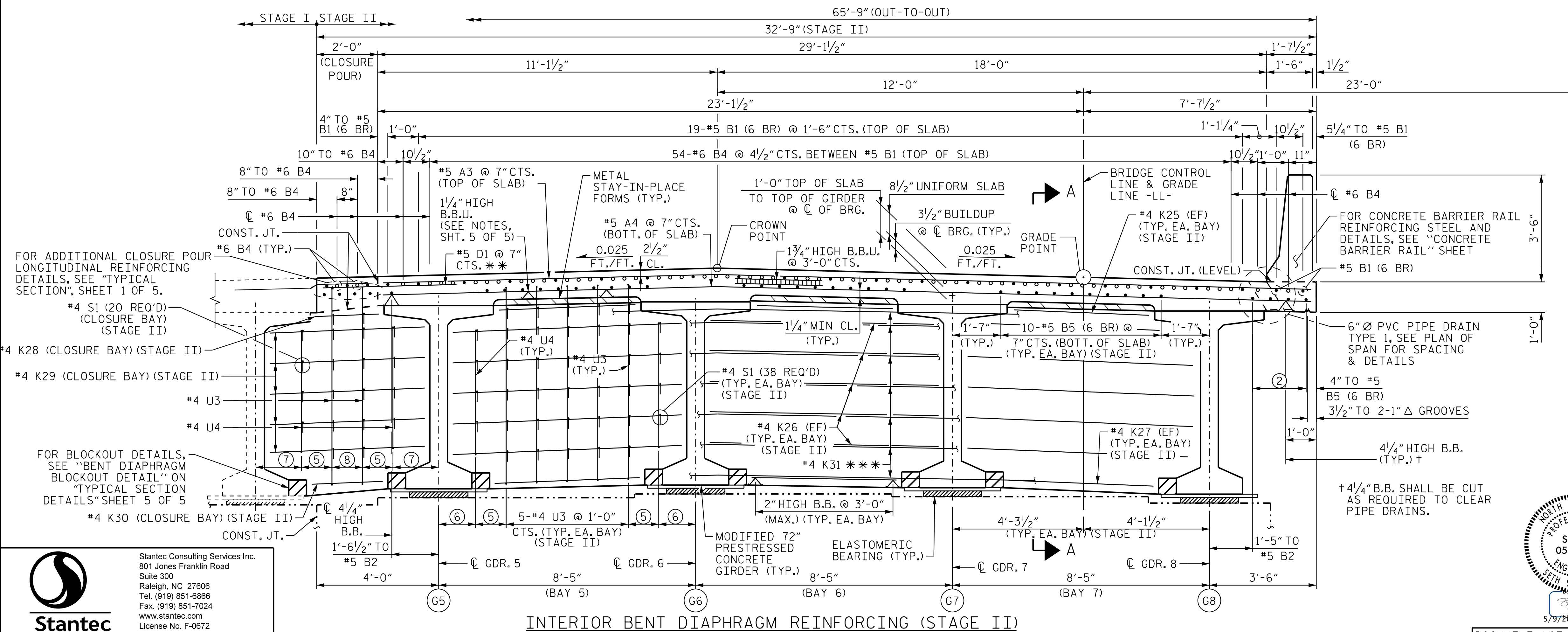
(6 BR) DENOTES 6 BAR RUN.

(EF) DENOTE EACH FACE.

* PORTABLE PRECAST CONCRETE MEDIAN BARRIER ANCHORED TO BRIDGE DECK. (SEE NCDOT STD. 854.04 & 1170.01)

** DOWELS SHALL BE PLACED IN THE SAME HORIZONTAL PLANE AS THE TOP SLAB REINFORCING STEEL.

*** FOR "K" BAR PLACEMENT, SEE "PLAN OF SPANS DETAILS - DIAPHRAGM", SHEET 8 OF 8.



INTERIOR BENT DIAPHRAGM REINFORCING (STAGE II)
TYPICAL SECTION

PROJECT NO. R-2707D
CLEVELAND COUNTY
STATION: 849+00.00 -L-

SHEET 4 OF 5

STATE OF NORTH CAROLINA
DEPARTMENT OF TRANSPORTATION
RALEIGH
SUPERSTRUCTURE
TYPICAL SECTION
(LEFT LANE)



REVISIONS						SHEET NO.
NO.	BY:	DATE:	NO.	BY:	DATE:	S5-11
1			3			TOTAL SHEETS
2			4			56

DOCUMENT NOT CONSIDERED FINAL UNLESS ALL SIGNATURES COMPLETED

Stantec
Stantec Consulting Services Inc.
801 Jones Franklin Road
Suite 300
Raleigh, NC 27606
Tel. (919) 851-6866
Fax. (919) 851-7024
www.stantec.com
License No. F-0672

DRAWN BY: J. B. GEILE DATE: 10/04/18
CHECKED BY: S. S. POOLE DATE: 12/10/22
DESIGN ENGINEER OF RECORD: S.S. POOLE DATE: 05/09/23

5/9/2023 2:07:39 PM jHogenbush
c:\pvt_wor\king\dms55461\R2707D-SMJL-TS04-220102.dgn