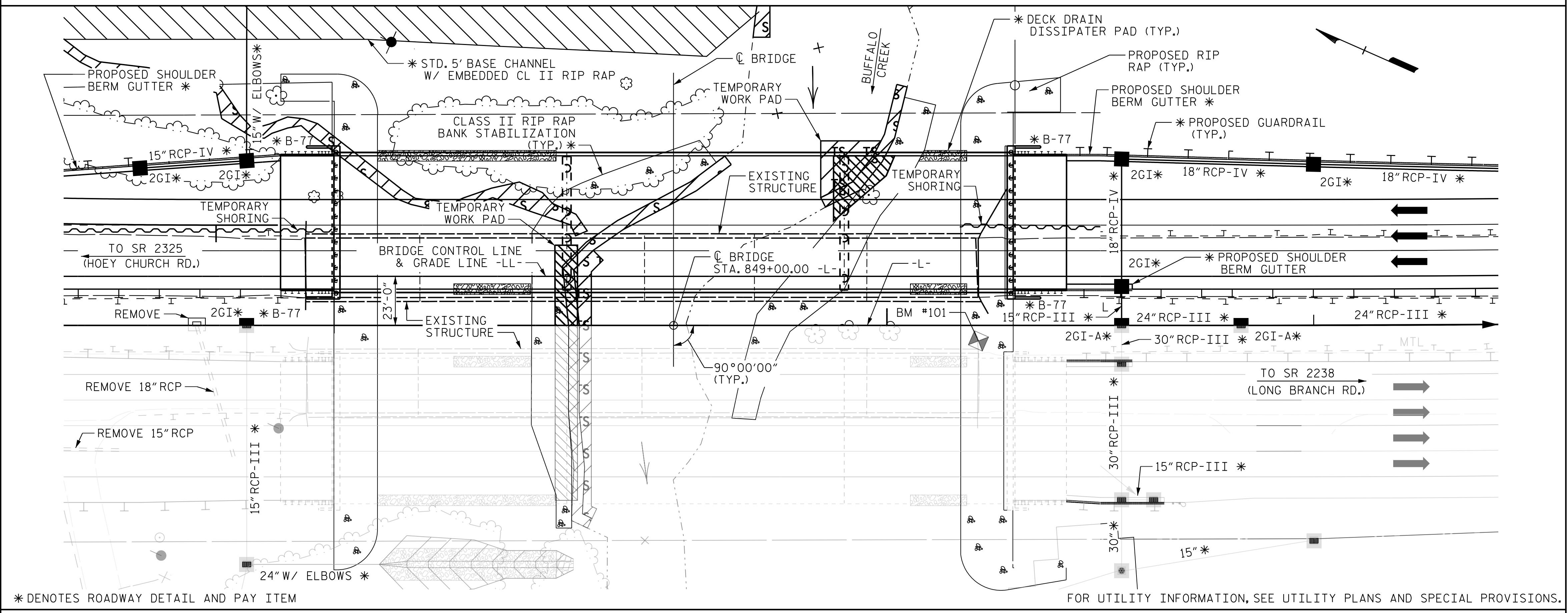


BM #101: . -L- STA. 850+42.89, 7.27' RT. EL. 667.84, TOP OF EARWALL @ SE CORNER OF BRIDGE 220101



NOTES

ASSUMED LIVE LOAD = HL-93 OR ALTERNATE LOADING.
 THIS BRIDGE HAS BEEN DESIGNED IN ACCORDANCE WITH THE AASHTO LRFD BRIDGE DESIGN SPECIFICATION.
 THIS BRIDGE IS LOCATED IN SEISMIC ZONE 1.
 FOR OTHER DESIGN DATA AND GENERAL NOTES, SEE SHEET SN.
 FOR SUBMITTAL OF WORKING DRAWINGS, SEE SPECIAL PROVISIONS.
 FOR FALSEWORK AND FORMWORK, SEE SPECIAL PROVISIONS.
 FOR CRANE SAFETY, SEE SPECIAL PROVISIONS.
 FOR GROUT FOR STRUCTURES, SEE SPECIAL PROVISIONS.
 PRESTRESSED CONCRETE DECK PANELS MAY BE USED IN LIEU OF METAL STAY IN PLACE FORMS IN ACCORDANCE WITH ARTICLE 420-3 OF THE STANDARD SPECIFICATIONS.
 REMOVABLE FORMS MAY BE USED IN LIEU OF METAL STAY-IN-PLACE FORMS IN ACCORDANCE WITH ARTICLE 420-3 OF THE STANDARD SPECIFICATIONS.
 AT THE CONTRACTOR'S OPTION, AND UPON REMOVAL OF THE CAUSEWAY, THE CLASS II RIP RAP USED IN THE CAUSEWAY MAY BE PLACED AS RIP RAP SLOPE PROTECTION. SEE SPECIAL PROVISIONS FOR CONSTRUCTION, MAINTENANCE AND REMOVAL OF TEMPORARY ACCESS AT STATION 849+00.
 NEEDLE BEAMS WILL NOT BE ALLOWED UNLESS OTHERWISE CALLED FOR ON THE PLANS OR APPROVED BY THE ENGINEER.
 THE CLASS AA CONCRETE IN THE BRIDGE DECK SHALL CONTAIN FLY ASH OR GROUND GRANULATED BLAST FURNACE SLAG AT THE SUBSTITUTION RATE SPECIFIED IN ARTICLE 1024-1 AND IN ACCORDANCE WITH ARTICLES 1024-5 AND 1024-6 OF THE STANDARD SPECIFICATIONS. NO PAYMENT WILL BE MADE FOR THIS SUBSTITUTION AS IT IS CONSIDERED INCIDENTAL TO THE COST OF THE REINFORCED CONCRETE DECK SLAB.
 THE MATERIAL SHOWN IN THE CROSS-HATCHED AREA SHALL BE EXCAVATED FOR A DISTANCE OF 23 FT RIGHT OF THE BRIDGE CONTROL LINE AND 25 FT LEFT OF THE BRIDGE CONTROL LINE AS DIRECTED BY THE ENGINEER. THIS WORK WILL BE PAID FOR AT THE CONTRACT LUMP SUM PRICE FOR UNCLASSIFIED STRUCTURE EXCAVATION. SEE SECTION 412 OF THE STANDARD SPECIFICATIONS.
 TEMPORARY SHORING WILL BE REQUIRED IN THE AREA INDICATED IN THE PLAN.
 FOR LIMITS OF TEMPORARY SHORING FOR MAINTENANCE OF TRAFFIC, SEE TRAFFIC CONTROL PLANS. FOR PAY ITEM FOR TEMPORARY SHORING FOR MAINTENANCE OF TRAFFIC, SEE ROADWAY PLANS.

LOCATION SKETCH

TOTAL BILL OF MATERIAL

	CONSTRUCTION, MAINTENANCE AND REMOVAL OF TEMPORARY ACCESS	REMOVAL OF EXISTING STRUCTURE	ASBESTOS ASSESSMENT	4'-0" DIA DRILLED PIERS IN SOIL	4'-0" DIA DRILLED PIERS NOT IN SOIL	PERMANENT STEEL CASING FOR 4'-0" DIA DRILLED PIERS	SID INSPECTIONS	CSL TESTING	UNCLASSIFIED STRUCTURE EXCAVATION	REINFORCED CONCRETE DECK SLAB	GROOVING BRIDGE FLOORS	CLASS A CONCRETE	BRIDGE APPROACH SLABS	REINFORCING STEEL
	LUMP SUM	LUMP SUM	LUMP SUM	L.F.	L.F.	L.F.	EA.	EA.	LUMP SUM	SQ.FT.	SQ.FT.	CU.YDS.	LUMP SUM	LBS.
SUPERSTRUCTURE										21,040	21,857		LUMP SUM	
END BENT NO.1												65.5		12,530
BENT NO.1				52.8	56.6	45.2	1					85.3		25,442
BENT NO.2				37.2	34.8	41.6						69.0		20,998
END BENT NO.2									LUMP SUM			65.5		12,530
TOTAL	LUMP SUM	LUMP SUM	LUMP SUM	90.0	91.4	86.8	1	1	LUMP SUM	21,040	21,857	285.3	LUMP SUM	71,500

TOTAL BILL OF MATERIAL (CONT'D)

	SPIRAL COLUMN REINFORCING STEEL	MODIFIED 72" PRESTRESSED CONC. GIRDERS	PILE DRIVING EQUIPMENT SETUP FOR HP 14X73 STEEL PILES	HP14X73 STEEL PILES	STEEL PILE POINTS	CONCRETE BARRIER RAIL	RIP RAP CLASS II (2'-0" THICK)	GEOTEXTILE FOR DRAINAGE	ELASTOMERIC BEARINGS
	LBS.	NO. LIN.FT.	EA.	NO. LIN.FT.	EA.	LIN.FT.	TON	SY	LUMP SUM
SUPERSTRUCTURE		24 2,528.67				636.67			LUMP SUM
END BENT NO.1			12	12	510.00	6	278	310	
BENT NO.1	5,146								
BENT NO.2	3,068								
END BENT NO.2			12	12	300.00		341	385	
TOTAL	8,214	24 2,528.67	24	24	810.00	6	619	695	LUMP SUM

THE SUBSTRUCTURE OF THE EXISTING BRIDGE INDICATED ON THE PLANS IS FROM THE BEST INFORMATION AVAILABLE. SINCE THIS INFORMATION IS SHOWN FOR THE CONVENIENCE OF THE CONTRACTOR, THE CONTRACTOR SHALL HAVE NO CLAIM WHATSOEVER AGAINST THE DEPARTMENT OF TRANSPORTATION FOR ANY DELAYS OR ADDITIONAL COST INCURRED BASED ON DIFFERENCES BETWEEN THE EXISTING BRIDGE SUBSTRUCTURE SHOWN ON THE PLANS AND THE ACTUAL CONDITIONS AT THE PROJECT SITE.

REMOVAL OF THE EXISTING BRIDGE SHALL BE PERFORMED IN A MANNER THAT PREVENTS DEBRIS FROM FALLING INTO THE WATER. THE CONTRACTOR SHALL SUBMIT DEMOLITION PLANS FOR REVIEW AND REMOVE THE BRIDGE IN ACCORDANCE WITH ARTICLE 402-2 OF THE STANDARD SPECIFICATIONS.

THIS STRUCTURE HAS BEEN DESIGNED IN ACCORDANCE WITH "HEC 18-EVALUATING SCOUR AT BRIDGES."

FOR EROSION CONTROL MEASURES, SEE EROSION CONTROL PLANS.
 FOR ASBESTOS ASSESSMENT FOR BRIDGE DEMOLITION AND RENOVATION ACTIVITIES, SEE SPECIAL PROVISIONS.

NOTES (CONT. AT LEFT)

PROJECT NO. R-2707D
CLEVELAND COUNTY
 STATION: 849+00.00 -L-

SHEET 3 OF 3

STATE OF NORTH CAROLINA
 DEPARTMENT OF TRANSPORTATION
 RALEIGH

GENERAL DRAWING
 FOR BRIDGE OVER BUFFALO CREEK
 ON US 74 BETWEEN
 SR 2325 (HOEY CHURCH RD.) AND
 SR 2238 (LONG BRANCH RD.)
 (LEFT LANE)



Stantec Consulting Services Inc.
 801 Jones Franklin Road
 Suite 300
 Raleigh, NC 27606
 Tel. (919) 851-6866
 Fax. (919) 851-7024
 www.stantec.com
 License No. F-0672

DRAWN BY: J. B. GEILE DATE: 09/20/18
 CHECKED BY: S. S. POOLE DATE: 12/10/22
 DESIGN ENGINEER OF RECORD: S.S. POOLE DATE: 05/09/23

DOCUMENT NOT CONSIDERED FINAL UNLESS ALL SIGNATURES COMPLETED

REVISIONS						SHEET NO.
NO.	BY:	DATE:	NO.	BY:	DATE:	S5-04
1			3			TOTAL SHEETS
2			4			56

5/9/2023 2:04:55 PM jhogenbush