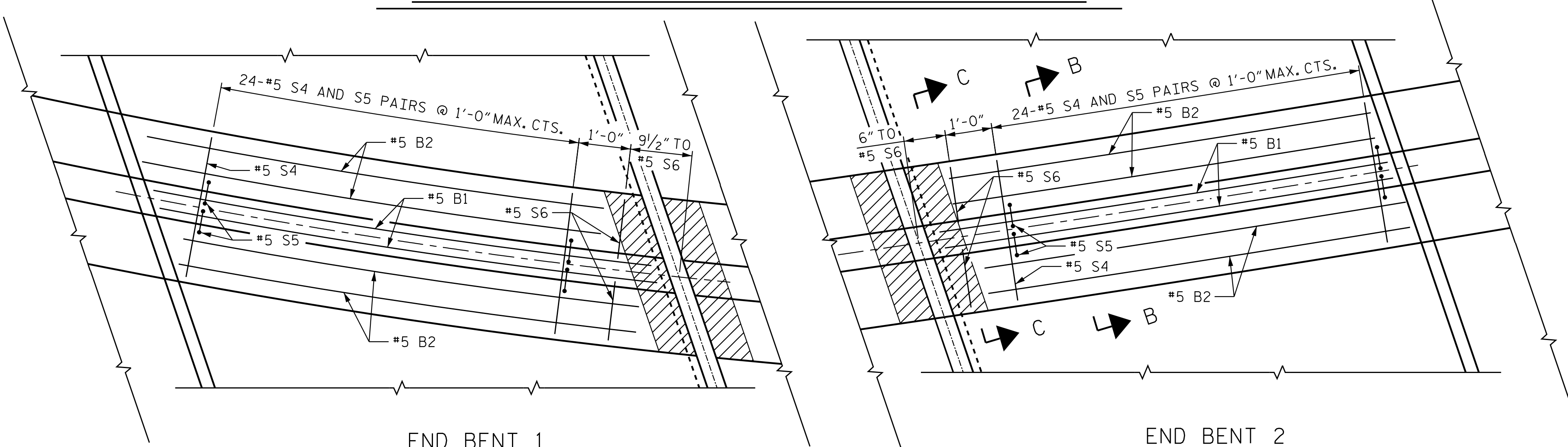


PLAN OF BARRIER RAIL



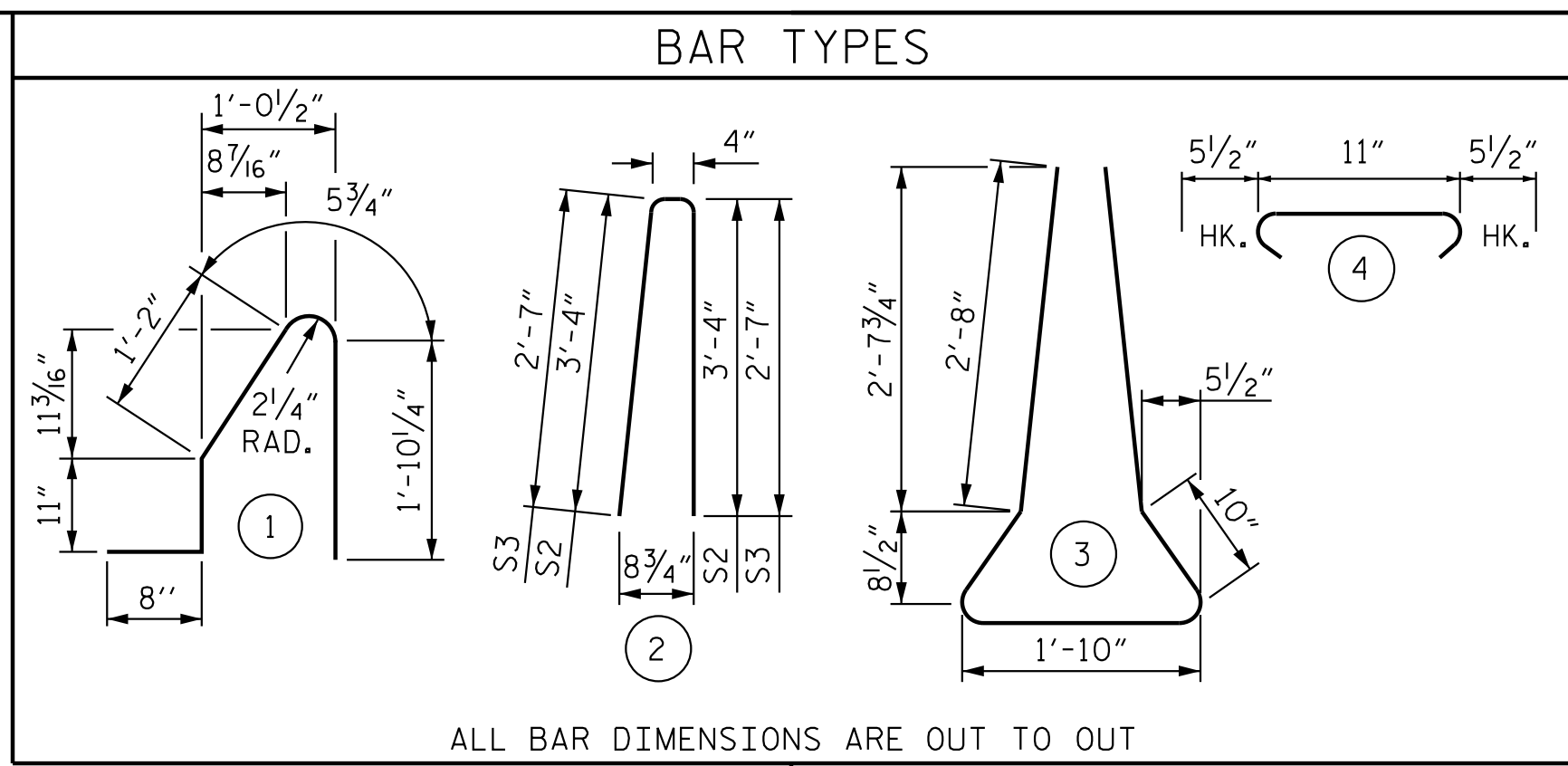
PLAN OF MEDIAN RAIL

NOTES

THE COST OF THE BARRIER RAIL AND MEDIAN RAIL ON THE APPROACH SLAB SHALL BE INCLUDED IN THE LINEAR FOOT CONTRACT PRICE BID FOR "CONCRETE BARRIER RAIL".

THE BARRIER RAIL AND MEDIAN RAIL ON EACH APPROACH SLAB SHALL NOT BE CAST UNTIL ALL APPROACH SLAB CONCRETE HAS BEEN CAST AND HAS REACHED A MINIMUM COMPRESSIVE STRENGTH OF 3,000 PSI.

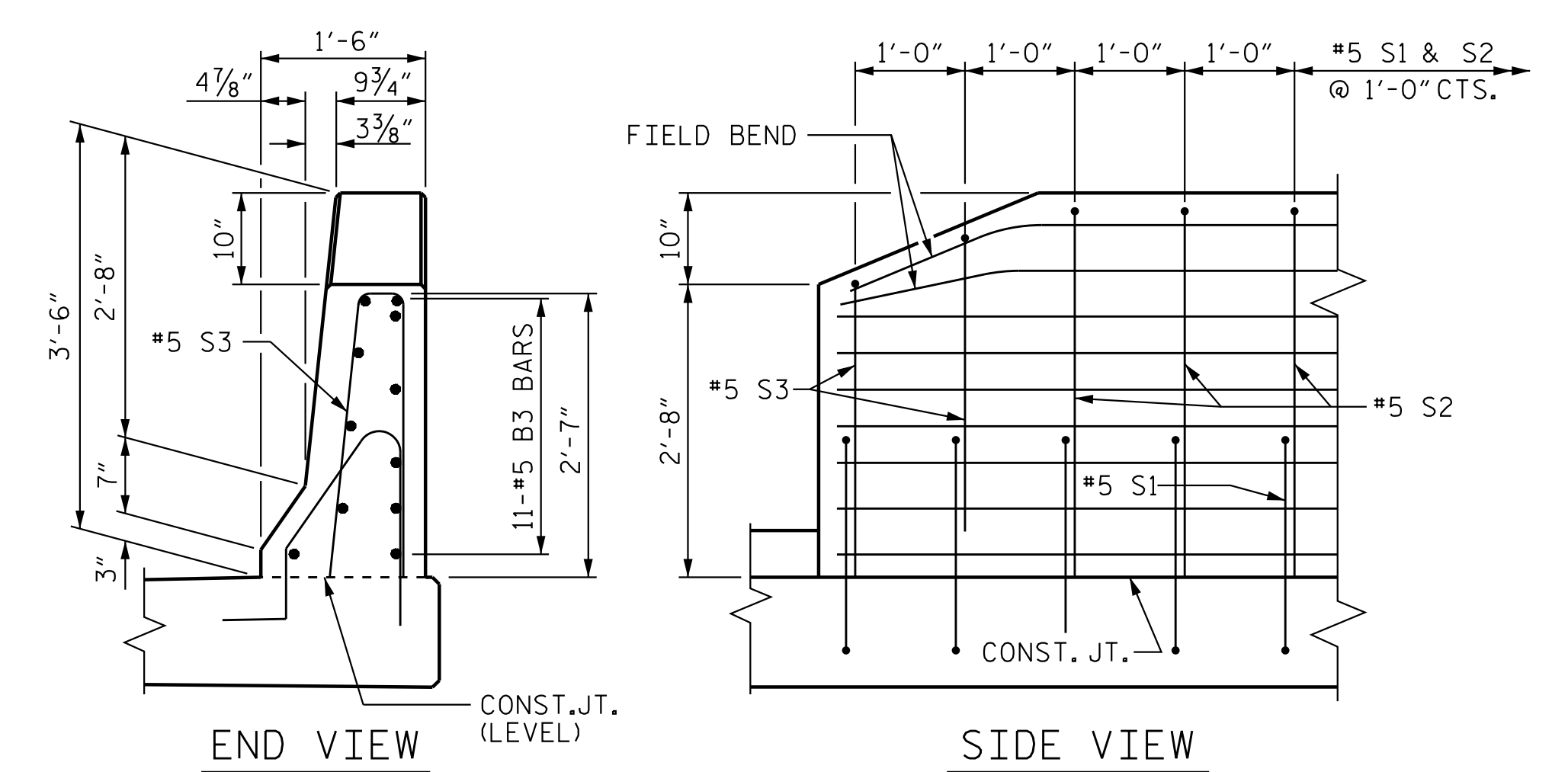
ALL REINFORCING STEEL IN BARRIER RAILS AND MEDIAN RAIL SHALL BE EPOXY COATED.



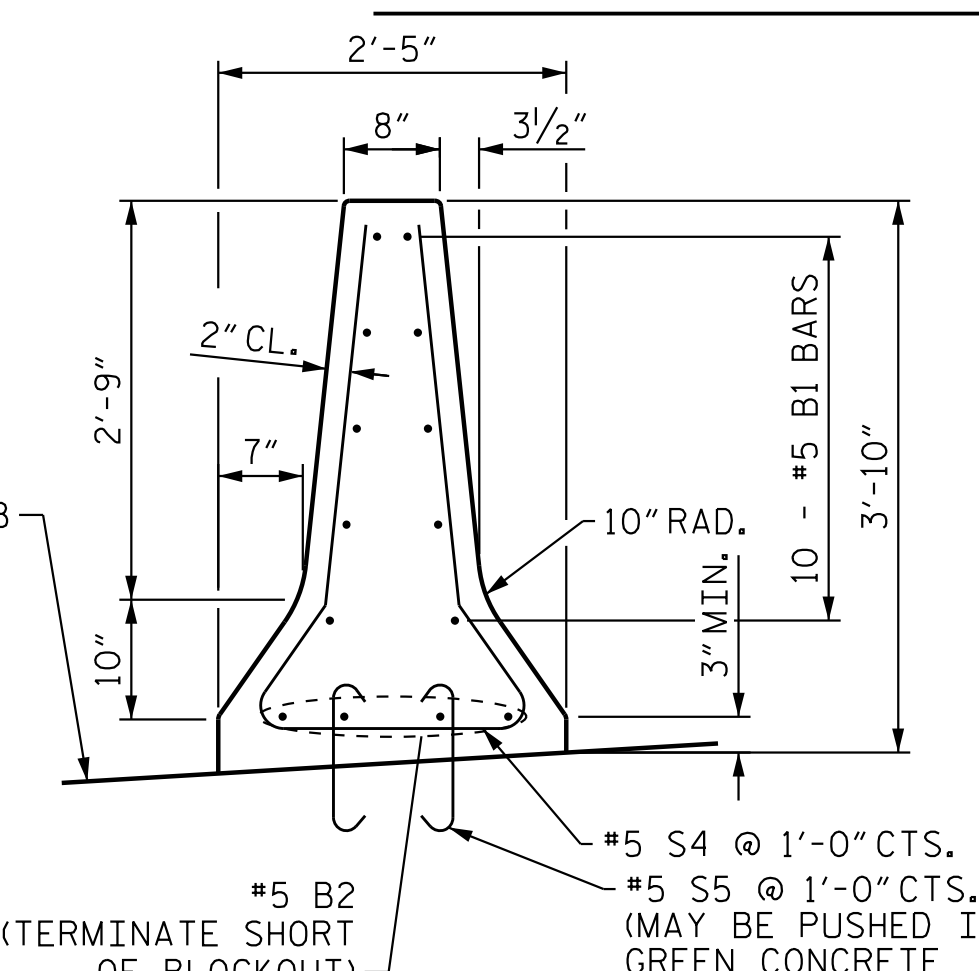
ALL BAR DIMENSIONS ARE OUT TO OUT

BILL OF MATERIAL

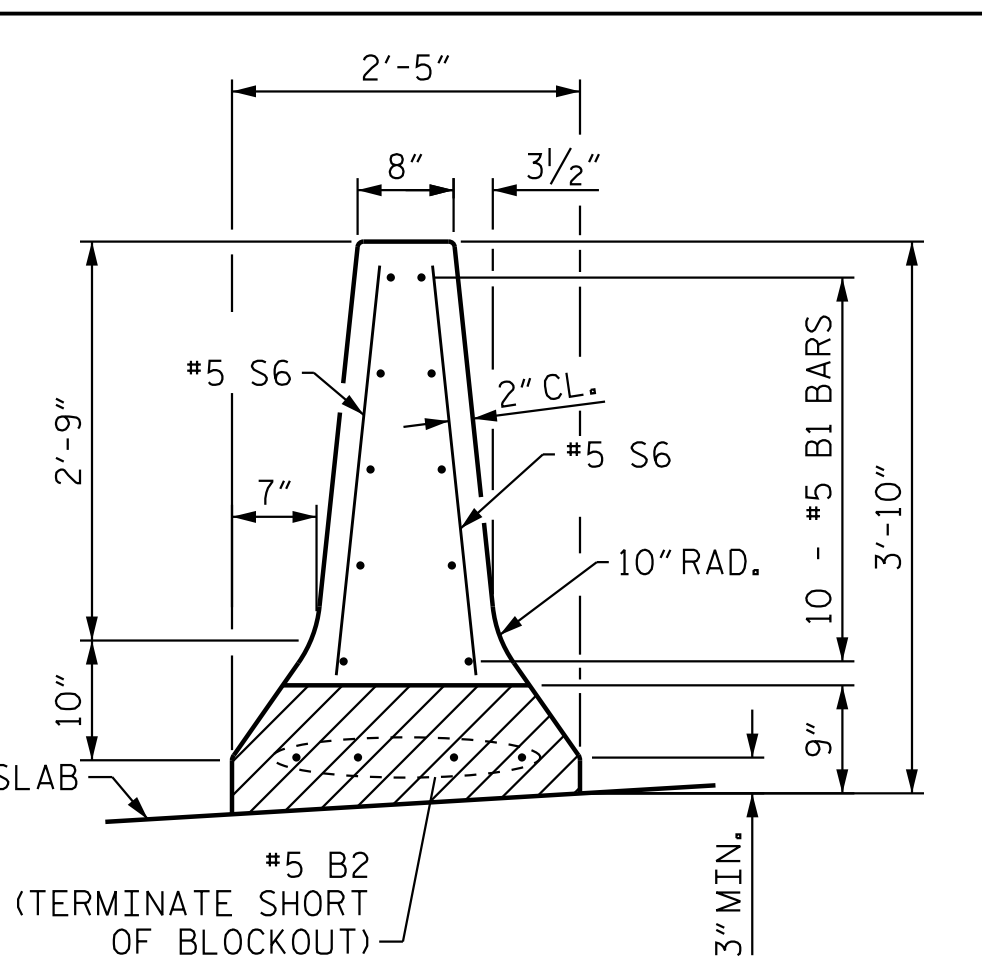
BARRIER RAIL AND MEDIAN					
BAR NO.	SIZE	TYPE	LENGTH	WEIGHT	
*B1	20	#5	STR	24'-8"	515
*B2	8	#5	STR	23'-9"	198
*B3	44	#5	STR	9'-8"	444
*S1	40	#5	1	5'-1"	212
*S2	32	#5	2	7'-0"	234
*S3	8	#5	2	5'-6"	46
*S4	48	#5	3	8'-10"	442
*S5	96	#5	4	1'-10"	184
*S6	4	#5	STR	2'-10"	12
* EPOXY COATED REINFORCING STEEL					2,287 LBS.
CLASS AA CONCRETE					14.6 C. Y.
CONCRETE BARRIER RAIL					40 LIN. FT.
CONCRETE MEDIAN RAIL					50 LIN. FT.



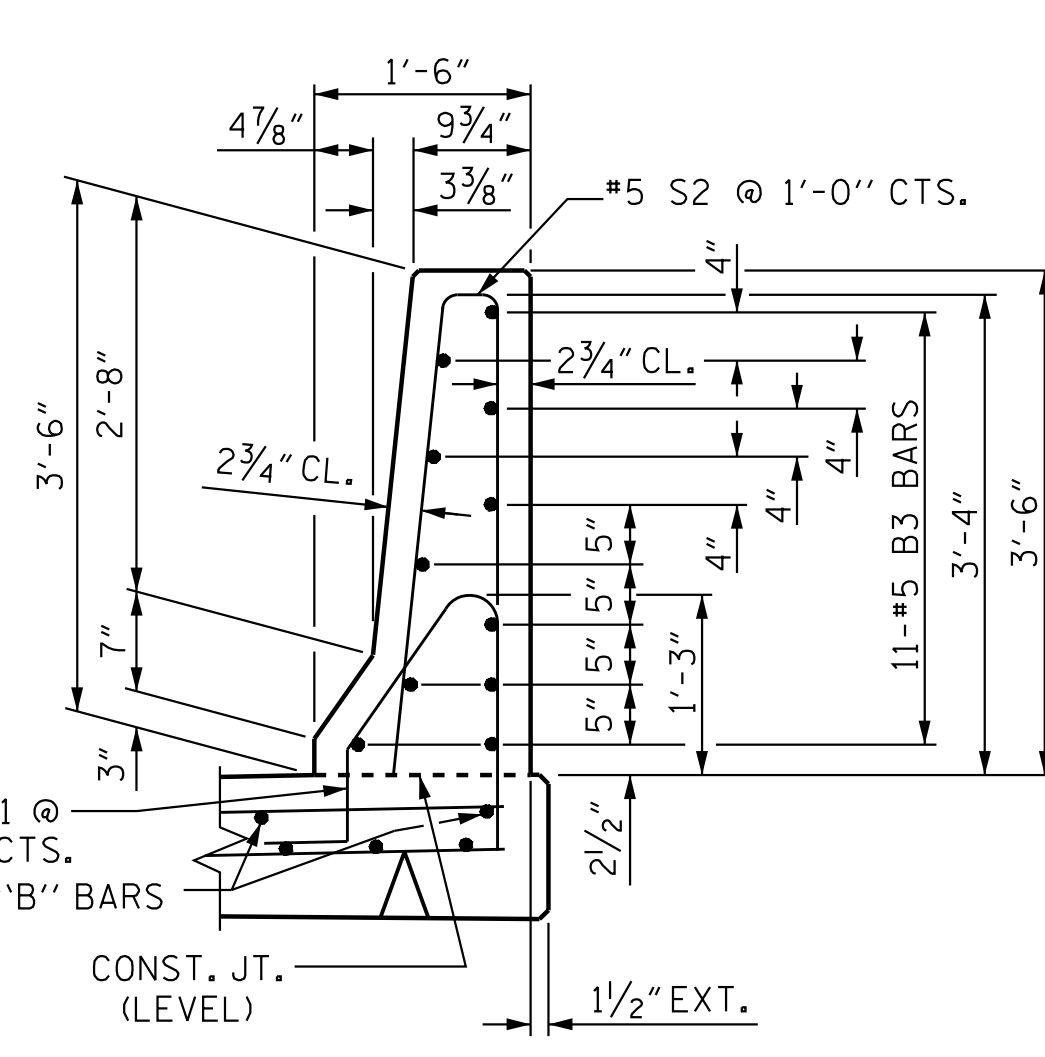
END OF RAIL DETAILS



SECTION B-B



SECTION C-C



SECTION THRU RAIL

PRELIMINARY PLANS
DO NOT USE FOR CONSTRUCTION

PROJECT NO. R-2707D
CLEVELAND COUNTY
STATION: 36+78.38 -RAMP A-
SHEET 2 OF 3

STATE OF NORTH CAROLINA
DEPARTMENT OF TRANSPORTATION
RALEIGH
STANDARD
BRIDGE APPROACH
SLAB DETAILS



DocuSigned by:
Victor E. Fraga
10/2023
DOCUMENT NOT CONSIDERED FINAL UNLESS ALL SIGNATURES COMPLETED

REVISIONS						SHEET NO.
NO.	BY:	DATE:	NO.	BY:	DATE:	S4-42
1			3			TOTAL SHEETS
2			4			43

2023-05-05 16:21:58 vfr:aga
 c:\users\vfraga\documents\p_w_working\ms5432\R2707D_SML_AS02_220491.dgn

Stantec Consulting Services Inc.
801 Jones Franklin Road
Suite 300
Raleigh, NC 27606
Tel. (919) 851-6886
Fax. (919) 851-7024
www.stantec.com
License No. F-0672

DESIGN ENGINEER OF RECORD: V. E. FRAGA DATE: 05/09/23

ASSEMBLED BY: K. A. WOYAHN DATE: 12/19/22
CHECKED BY: M. B. ISENHOUR DATE: 01/09/23

DRAWN BY: FCJ 11/88
CHECKED BY: ARB 11/88

REV. 6/13 MAA/GM
REV. 12/17 MAA/THC
REV. 5/18 MAA/THC