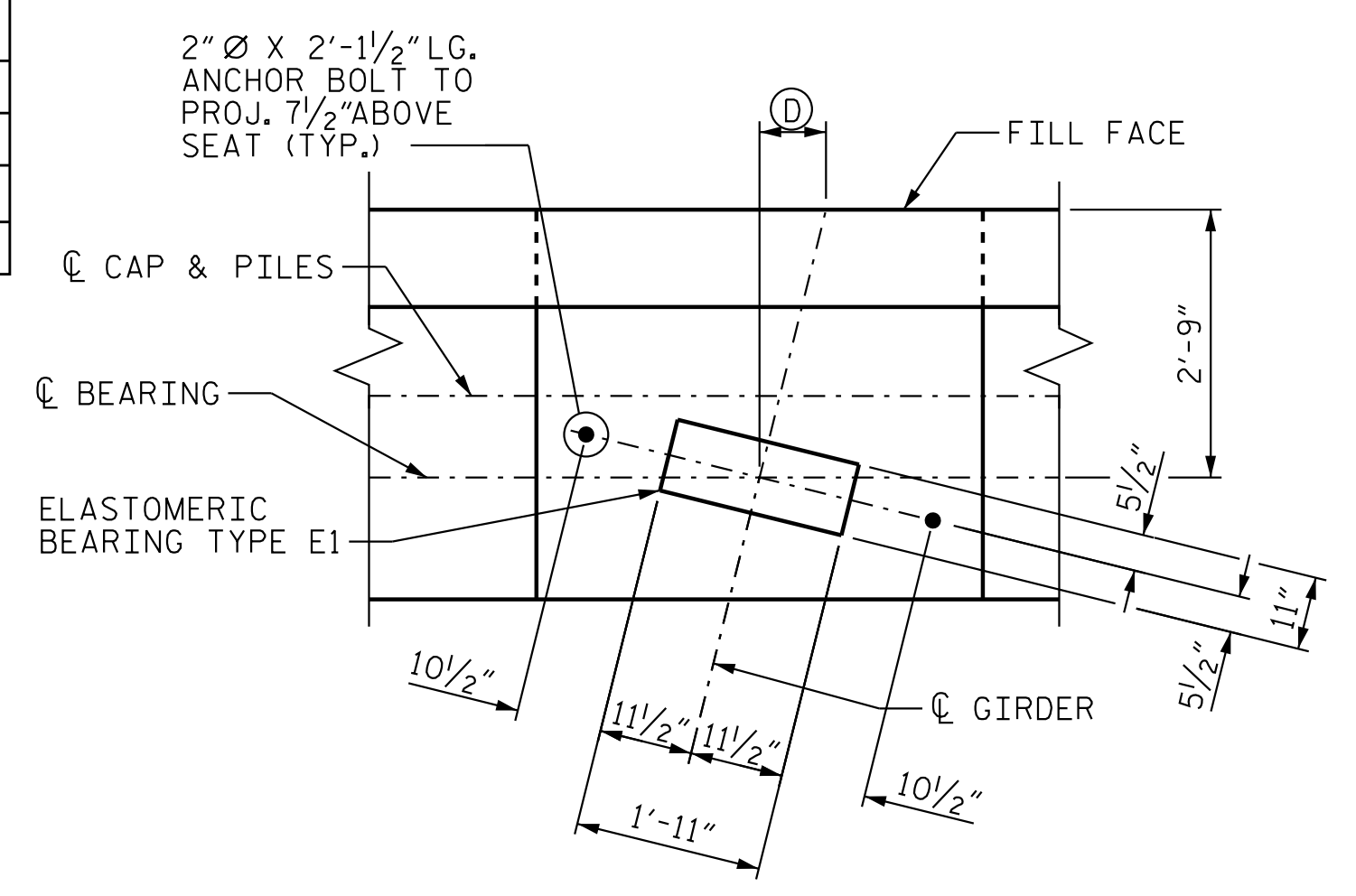


BAR	MIN. SPLICE
#10 B1	4'-7"
#10 B2	6'-0"
#4 B3	2'-5"
#4 K1	2'-5"

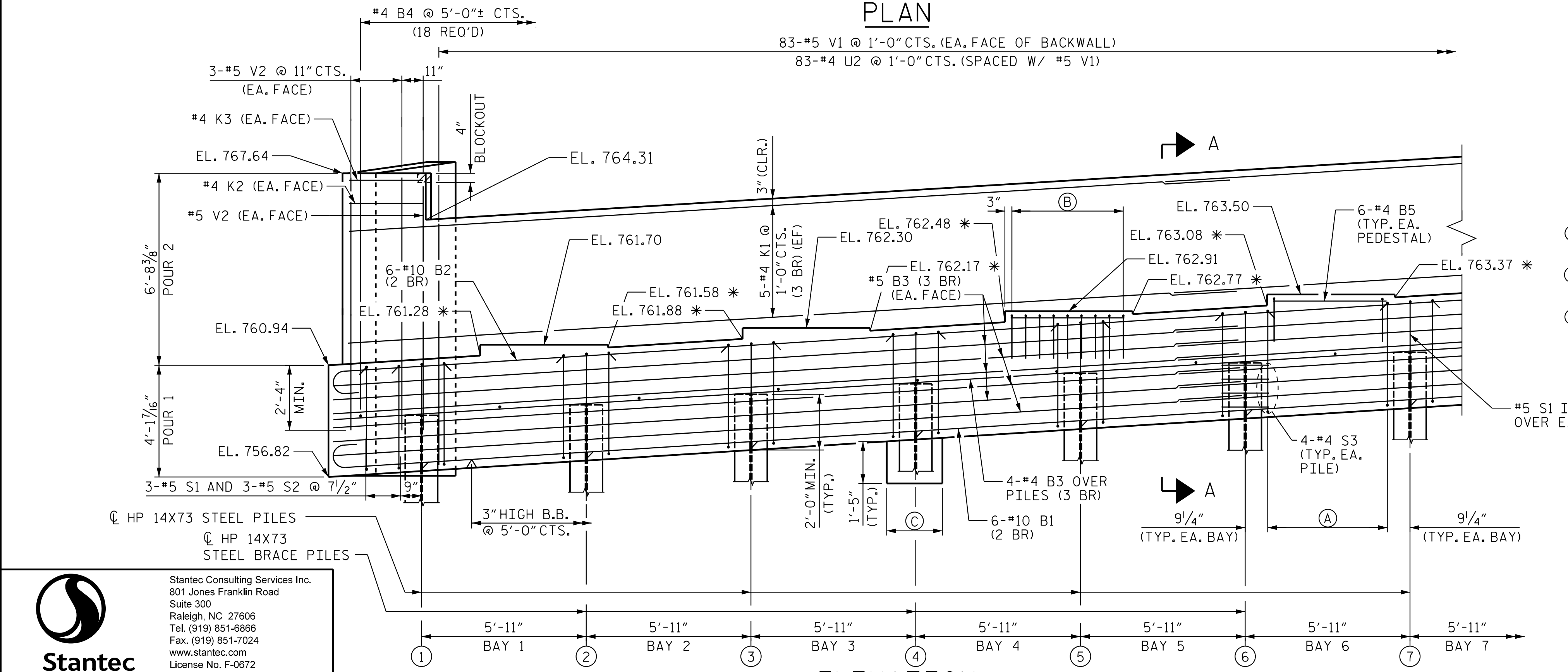
GIRDER	Ø
BG1	8 7/8"
BG2	8 3/16"
BG3	8 11/16"
BG4	8 9/16"
BG5	8 1/2"
BG6	8 3/8"
BG7	8 1/4"
BG8	8 3/16"
BG9	8 1/16"

NOTES

- STIRRUPS IN CAP MAY BE SHIFTED AS NECESSARY TO CLEAR ANCHOR BOLTS.
- BACKWALL SHALL BE PLACED BEFORE APPLYING EPOXY PROTECTIVE COATING.
- FOR WING DETAILS, SEE SHEET 3 OF 4.
- FOR PILE SPLICE DETAILS, SEE SHEET 4 OF 4.
- FOR PILE CUT OFF ELEVATION SEE TABLE SHEET 4 OF 4.
- (2 BR) DENOTES 2 BAR RUN.
- * FOR LOCATION OF ELEVATION BETWEEN BRIDGE SEAT, SEE "SECTION A-A" ON SHEET 4 OF 4.
- TOP SURFACE OF END BENT CAP BETWEEN BRIDGE SEAT PEDESTALS SHALL BE SLOPED TRANSVERSELY FROM FILL FACE TO FRONT FACE AT A RATE OF 1"4" / FT.
- FOR TOP OF PILE ELEVATIONS, SEE SHEET 4 OF 4.



DETAIL A



- (A) 8-#5 S1 AND 8-#5 S2 @ 7 1/2" CTS. (TYP. EA. BAY)
- (B) 9-#4 U1 @ 6" CTS. (TYP. EA. PEDESTAL)
- (C) PILE COLLAR, TYP. EA. PILE. OTHERS NOT SHOWN FOR CLARITY.

**PRELIMINARY PLANS
DO NOT USE FOR CONSTRUCTION**

PROJECT NO. R-2707D
CLEVELAND COUNTY
 STATION: 36+78.38 -RAMP A-

SHEET 1 OF 4

STATE OF NORTH CAROLINA
 DEPARTMENT OF TRANSPORTATION
 RALEIGH
SUBSTRUCTURE
 END BENT 2
 PLAN AND ELEVATION (LEFT)



DocuSigned by:
 Victor E. Fraga
 DOCUMENT NOT CONSIDERED
 FINAL UNLESS ALL
 SIGNATURES COMPLETED

REVISIONS						SHEET NO.
NO.	BY:	DATE:	NO.	BY:	DATE:	S4-36
1			3			TOTAL SHEETS
2			4			43

Stantec Consulting Services Inc.
 801 Jones Franklin Road
 Suite 300
 Raleigh, NC 27606
 Tel. (919) 851-6866
 Fax. (919) 851-7024
 www.stantec.com
 License No. F-0672

DRAWN BY: J. B. GEILE DATE: 12/16/22
 CHECKED BY: V. E. FRAGA DATE: 01/26/23
 DESIGN ENGINEER OF RECORD: V. E. FRAGA DATE: 05/09/23

ELEVATION

2023-05-05 18:21:35 vfraga
 C:\Users\vfraga\documents\p_w_working\ms55432\R2707D_SML_E20_220491.dgn