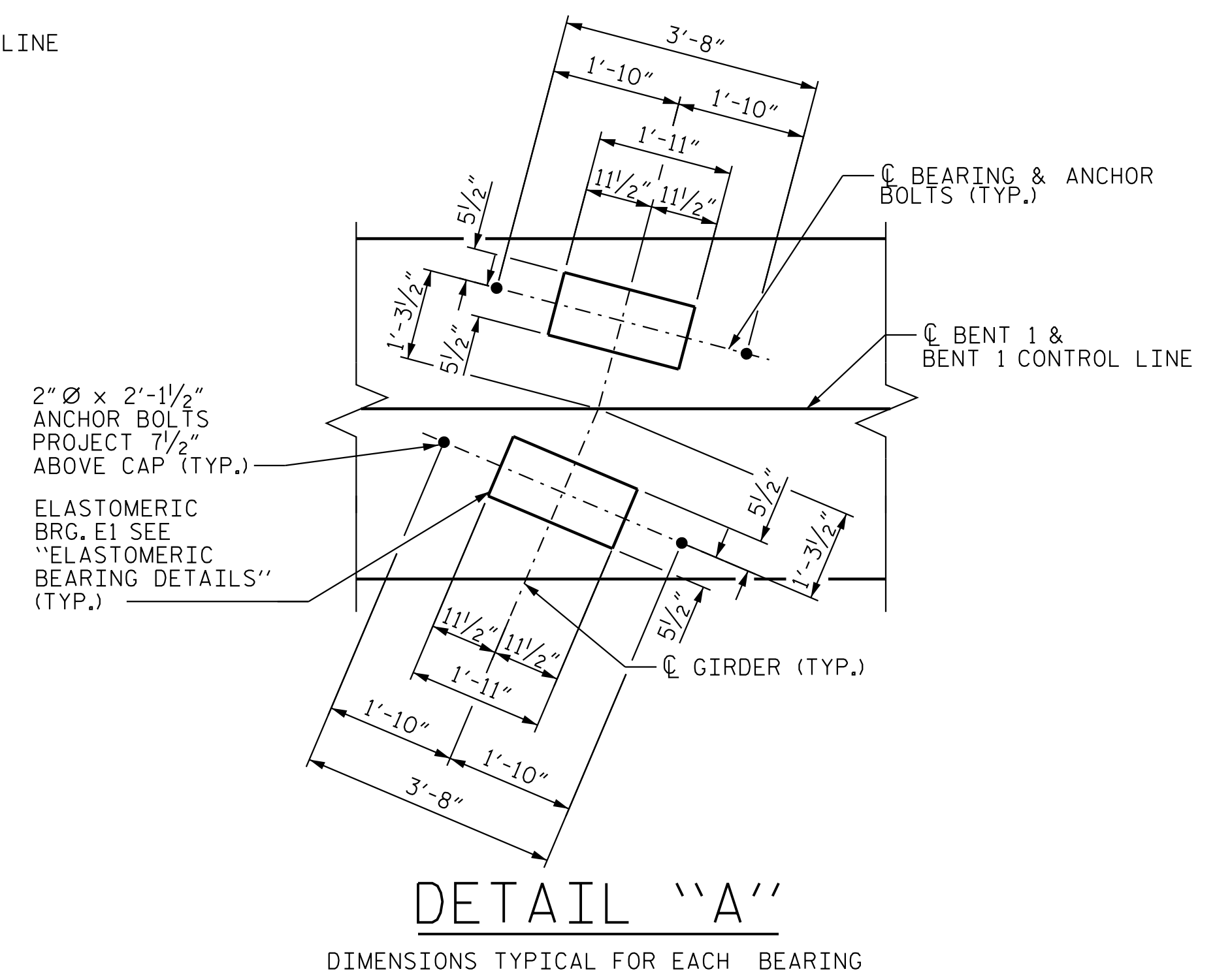
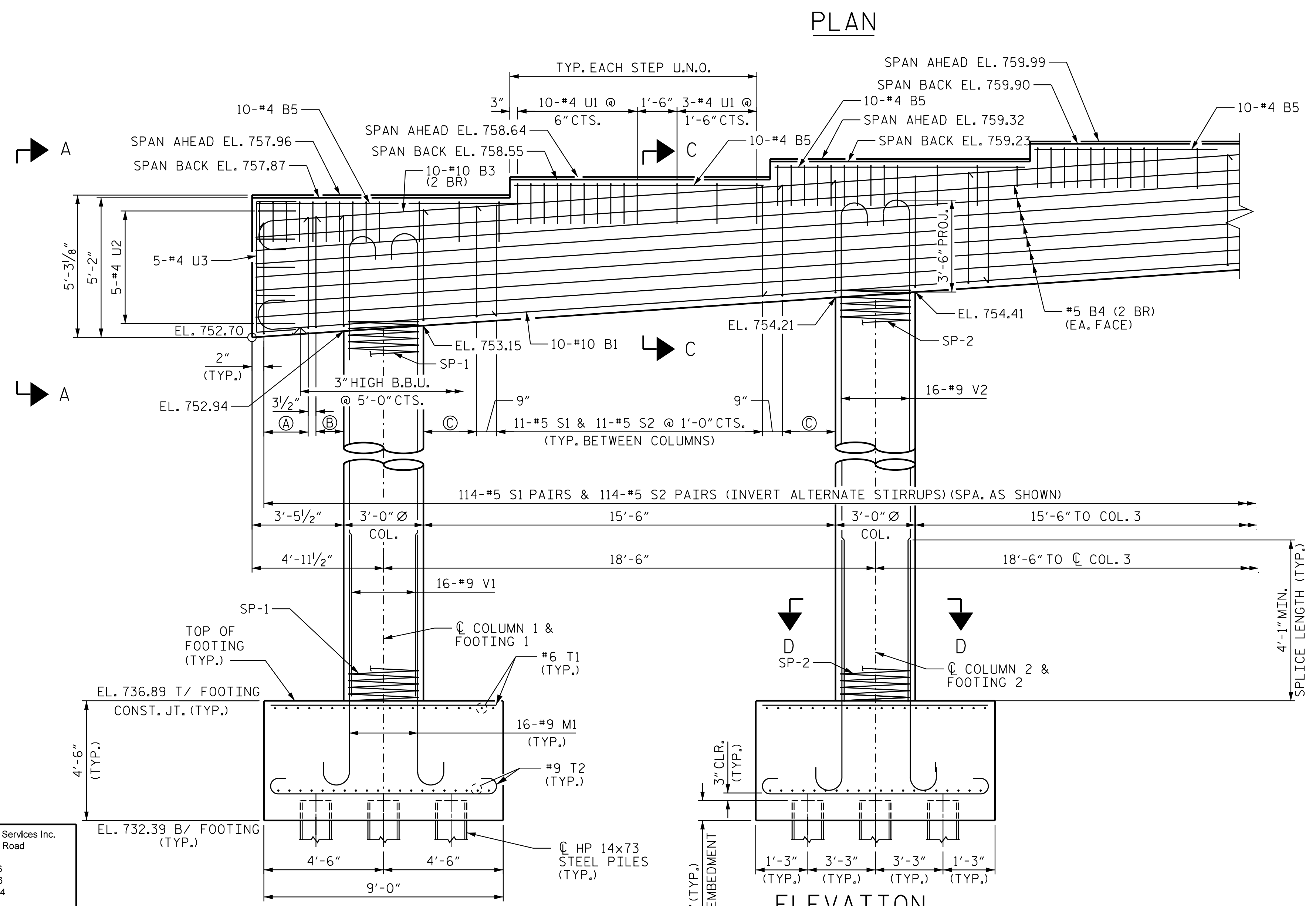


**NOTES:**

- STIRRUPS IN CAP MAY BE SHIFTED AS NECESSARY TO CLEAR ANCHOR BOLTS AND COLUMN REINFORCEMENT.
- HOOKS ON "V" BARS MAY BE TURNED AS NECESSARY FOR PLACING REINFORCING STEEL.
- (2 BR) DENOTES 2 BAR RUN.
- Ⓐ 3-#5 S1 & 3-#5 S2 @ 1'-0" CTS. (TYP. EA. OVERHANG)
- Ⓑ 4-#5 S1 & 4-#5 S2 @ 4" CTS. (TYP. EA. OVERHANG)
- Ⓒ 7-#5 S1 & 7-#5 S2 @ 4" CTS. (TYP. BETWEEN COLUMNS)
- FOR SECTION D-D, SEE "BENT 1 DETAILS" SHEET 3 OF 4.
- FOR VIEW A-A AND SECTION C-C, SEE "BENT 1 DETAILS" SHEET 4 OF 4.
- U.N.O. DENOTES UNLESS NOTED OTHERWISE.



**PRELIMINARY PLANS  
DO NOT USE FOR CONSTRUCTION**

PROJECT NO. R-2707D  
CLEVELAND COUNTY  
STATION: 36+78.38 -RAMP A-

SHEET 1 OF 4  
STATE OF NORTH CAROLINA  
DEPARTMENT OF TRANSPORTATION  
RALEIGH  
SUBSTRUCTURE  
BENT 1  
PLAN AND ELEVATION (LEFT)



DocuSigned by:  
Victor E. Fraga  
DOCUMENT NOT CONSIDERED  
FINAL UNLESS ALL  
SIGNATURES COMPLETED

REVISIONS						SHEET NO. S4-32
NO.	BY:	DATE:	NO.	BY:	DATE:	
1			3			TOTAL SHEETS 43
2			4			



DRAWN BY: J. B. GEILE DATE: 12/20/22  
CHECKED BY: M. B. ISENHOUR DATE: 01/23/23  
DESIGN ENGINEER OF RECORD: V. E. FRAGA DATE: 05/09/23

c:\Users\vfraga\documents\p\_w\_working\ms55432\R2707D\_SML\_B01\_220491.dgn 2023-05-05 10:24:19 vfraga