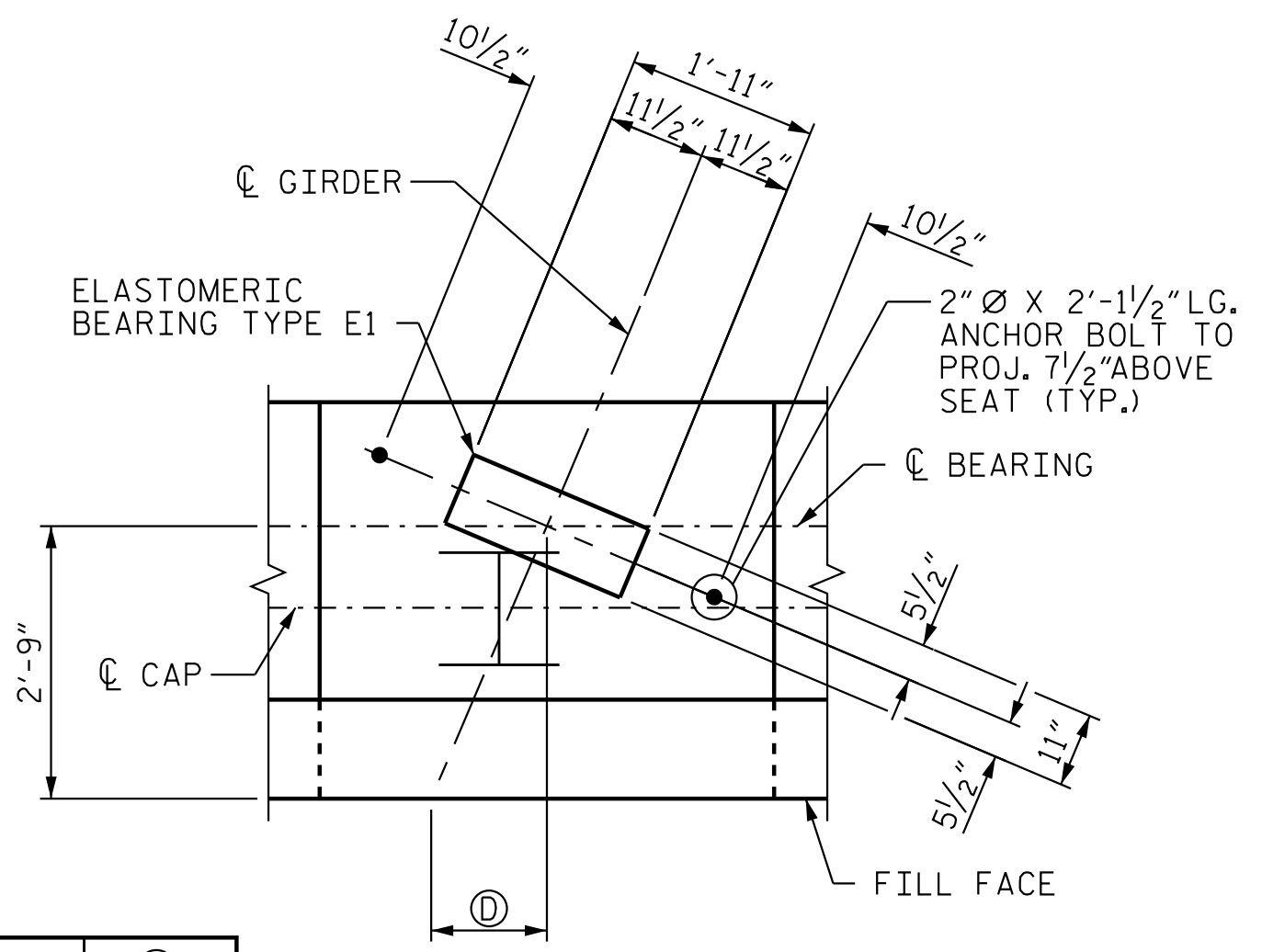


BAR	MIN. SPLICE
#10 B1	4'-7"
#10 B2	6'-0"
#4 B3	2'-5"
#4 K1	2'-5"

NOTES

- STIRRUPS IN CAP MAY BE SHIFTED AS NECESSARY TO CLEAR ANCHOR BOLTS.
- BACKWALL SHALL BE PLACED BEFORE APPLYING EPOXY PROTECTIVE COATING.
- THE CONCRETE IN THE SHADED AREA OF THE WING SHALL BE POURED AFTER THE JOINT BETWEEN THE DECK AND THE APPROACH SLAB HAS BEEN SAWS AND THE BARRIER RAILS ARE CAST IF SLIP FORMING IS USED.
- THE TOP SURFACE OF THE END BENT CAP SHALL BE CURED IN ACCORDANCE WITH THE STANDARD SPECIFICATIONS EXCEPT THE MEMBRANE CURING COMPOUND METHOD SHALL NOT BE USED.
- FOR WING DETAILS, SEE SHEET 3 OF 4.
- FOR PILE SPLICE DETAILS, SEE SHEET 4 OF 4.
- (2 BR) DENOTES 2 BAR RUN.
- (3 BR) DENOTES 3 BAR RUN.
- * FOR LOCATION OF ELEVATION BETWEEN BRIDGE SEATS, SEE "SECTION A-A" ON SHEET 4 OF 4.
- TOP SURFACE OF END BENT CAP BETWEEN BRIDGE SEAT PEDESTALS SHALL BE SLOPED TRANSVERSELY FROM FILL FACE TO FRONT FACE AT A RATE OF 1/4" / FT.
- FOR TOP OF PILE ELEVATIONS, SEE SHEET 4 OF 4.

PLAN

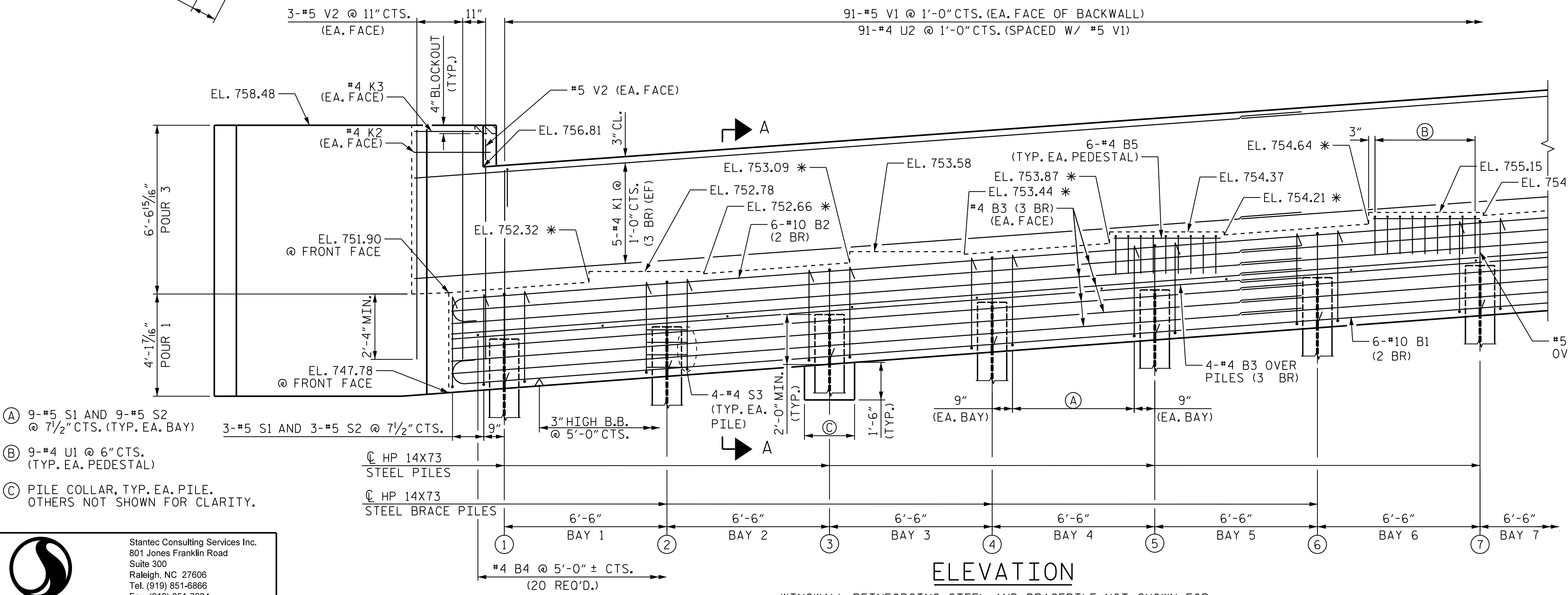


GIRDER	ⓐ
AG1	1'-2 3/8"
AG2	1'-2 3/16"
AG3	1'-2"
AG4	1'-1 13/16"
AG5	1'-1 5/8"
AG6	1'-1 7/16"
AG7	1'-1 1/4"
AG8	1'-1 1/8"
AG9	1'-0 15/16"

DETAIL A

**PRELIMINARY PLANS
DO NOT USE FOR CONSTRUCTION**

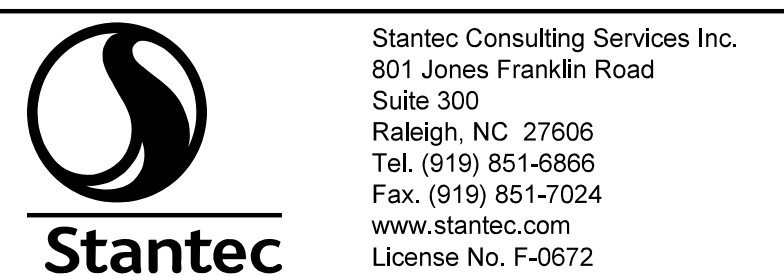
PROJECT NO. R-2707D
CLEVELAND COUNTY
 STATION: 36+78.38 -RAMP A-



ELEVATION

WINGWALL REINFORCING STEEL AND BRACEPILE NOT SHOWN FOR CLARITY. SEE "END BENT 1 WING WALL DETAILS" SHEET 3 OF 4.

- Ⓐ 9-#5 S1 AND 9-#5 S2 @ 7 1/2" CTS. (TYP. EA. BAY)
- Ⓑ 9-#4 U1 @ 6" CTS. (TYP. EA. PEDESTAL)
- Ⓒ PILE COLLAR, TYP. EA. PILE. OTHERS NOT SHOWN FOR CLARITY.



DRAWN BY: J. B. GEILE DATE: 12/28/22
 CHECKED BY: V. E. FRAGA DATE: 12/29/22
 DESIGN ENGINEER OF RECORD: V. E. FRAGA DATE: 05/09/23

DocuSigned by:
Victor E. Fraga
 12/29/2023

STATE OF NORTH CAROLINA
 PROFESSIONAL SEAL
 47083
 VICTOR E. FRAGA
 ENGINEER

SHEET 1 OF 4

REVISIONS						SHEET NO. S4-28
NO.	BY:	DATE:	NO.	BY:	DATE:	
1			3			TOTAL SHEETS 43
2			4			

DEPARTMENT OF TRANSPORTATION
 RALEIGH
 SUBSTRUCTURE
 END BENT 1
 PLAN AND ELEVATION (LEFT)

2023-05-05 19:24:03 vfr:ag9
 C:\Users\vfraga\documents\dw_working\ms55432\R2707D_SML_E101_220491.dgn