

NOTES

ALL PRESTRESSING STRANDS SHALL BE 7-WIRE LOW-RELAXATION GRADE 270 STRANDS AND SHALL CONFORM TO AASHTO M203 EXCEPT FOR SAMPLING REQUIREMENTS WHICH SHALL BE IN ACCORDANCE WITH THE STANDARD SPECIFICATIONS.

ALL REINFORCING STEEL SHALL BE GRADE 60.

APPLY EPOXY PROTECTIVE COATING TO END OF GIRDER SURFACES INDICATED IN ELEVATION VIEW.

EMBEDDED PLATE "B-1" SHALL BE GALVANIZED IN ACCORDANCE WITH THE STANDARD SPECIFICATIONS.

ANCHOR STUDS SHALL CONFORM TO AASHTO M169 GRADES 1010 THROUGH 1020 OR APPROVED EQUAL, AND SHALL MEET THE TYPE "B" REQUIREMENTS OF SUBSECTION 7.3 OF THE ANSI/AASHTO/AWS D1.5 BRIDGE WELDING CODE.

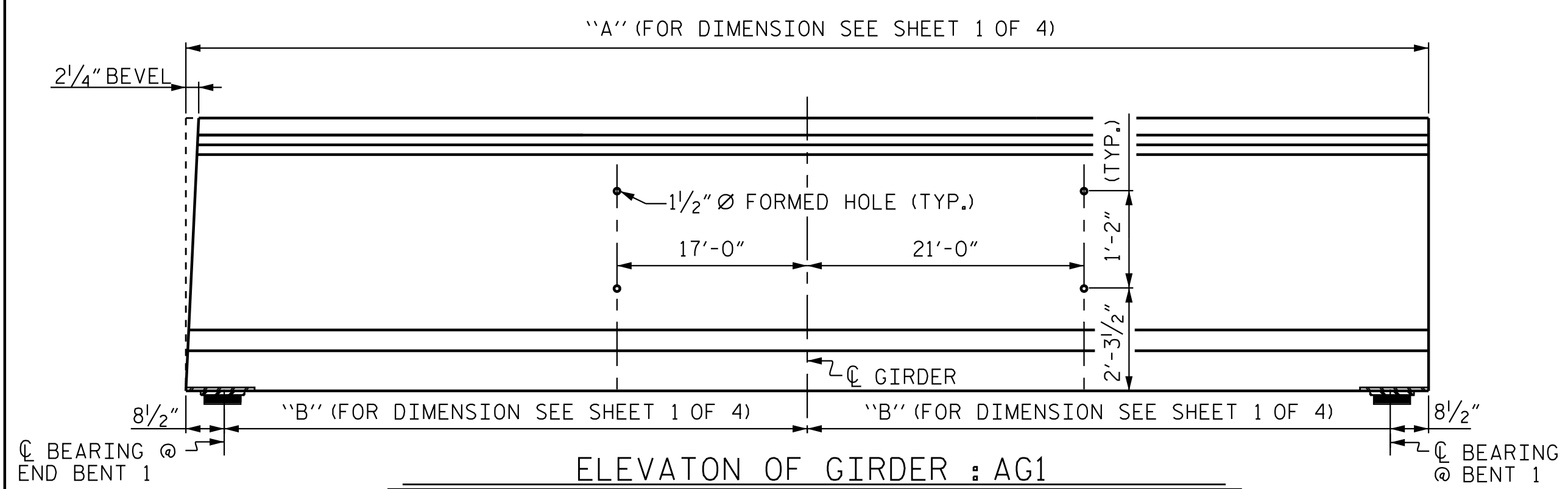
AT ENDS OF GIRDERS TO BE EMBEDDED IN CONCRETE DIAPHRAGMS OR END WALLS, PRESTRESSING STRANDS MAY EXTEND A MAXIMUM OF 2" BEYOND THE GIRDER ENDS. OTHERWISE, PRESTRESSING STRANDS SHALL BE CUT FLUSH WITH THE GIRDER ENDS.

THE TRANSFER OF LOAD FROM THE ANCHORAGES TO THE GIRDER SHALL BE DONE WHEN CONCRETE HAS REACHED A COMPRESSIVE STRENGTH OF NOT LESS THAN 7,000 PSI.

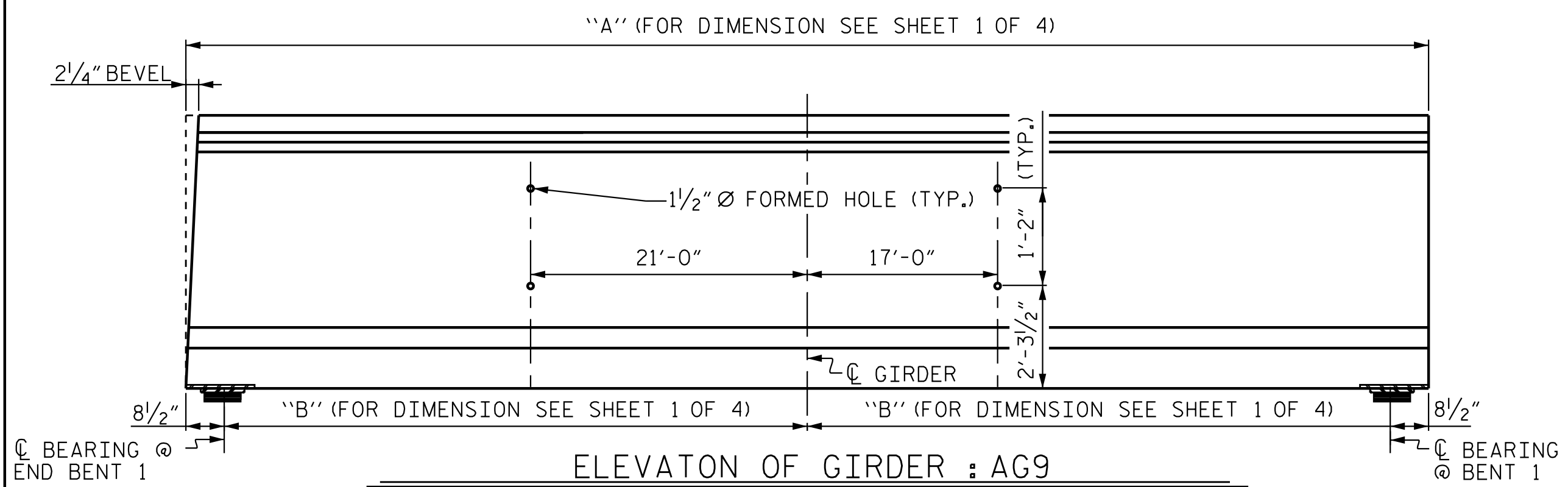
DEPENDING ON THE TYPE OF SYSTEM USED TO SUPPORT THE DECK SLAB FORMS, PRESET ANCHORS MAY BE NECESSARY IN THE PRESTRESSED CONCRETE GIRDER.

THE TOP SURFACE OF THE GIRDER, EXCLUDING THE OUTSIDE 4", SHALL BE RAKED TO A DEPTH OF 1"4", UNLESS NOTED OTHERWISE.

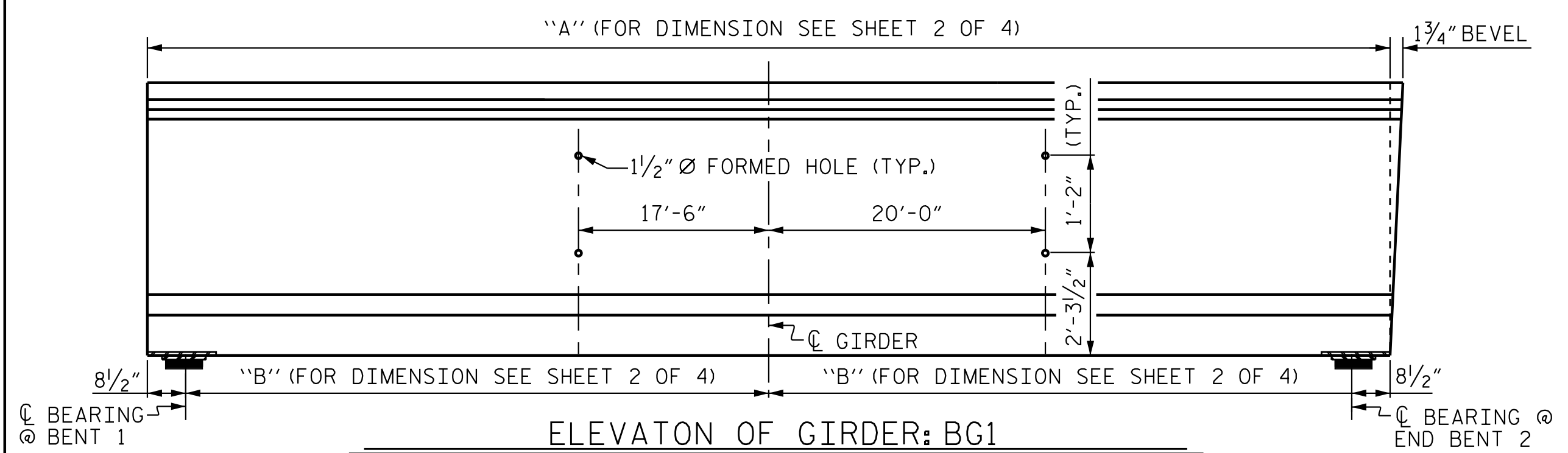
WHEN DRAPED STRANDS ARE DETAILED, THE LONGITUDINAL LOCATION OF THE HOLD DOWN DEVICES SHALL BE WITHIN 6" OF THE LOCATION SHOWN AND THE CENTER OF GRAVITY OF THE GROUP OF DRAPED STRANDS SHALL BE LOCATED WITHIN 1/2" OF THE THEORETICAL LOCATION SHOWN.



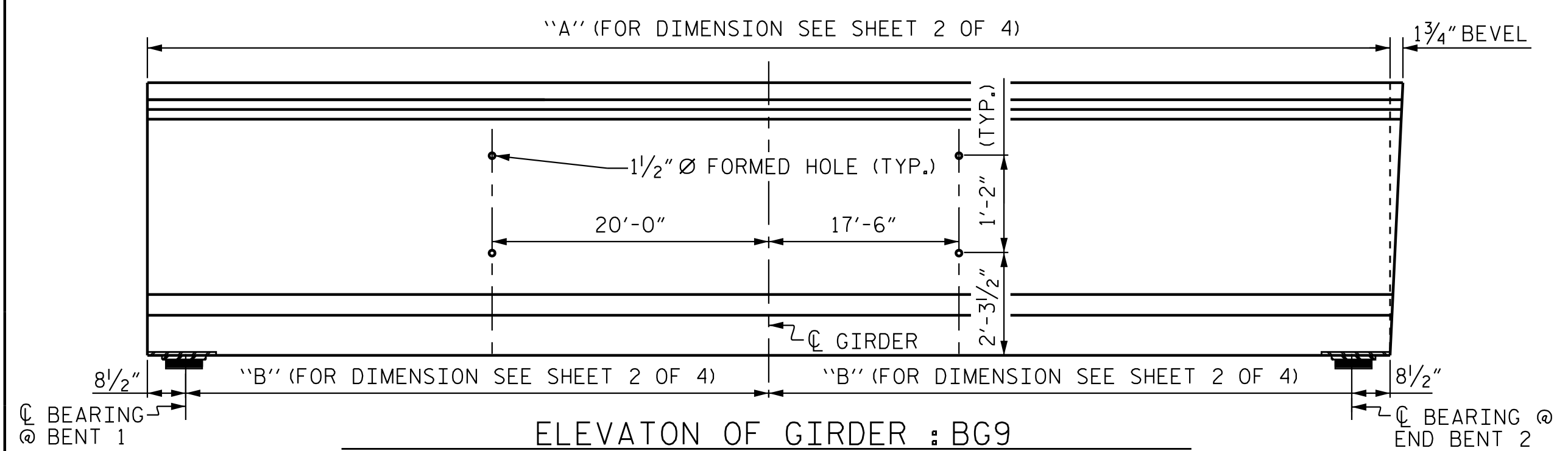
ELEVATION OF GIRDER : AG1



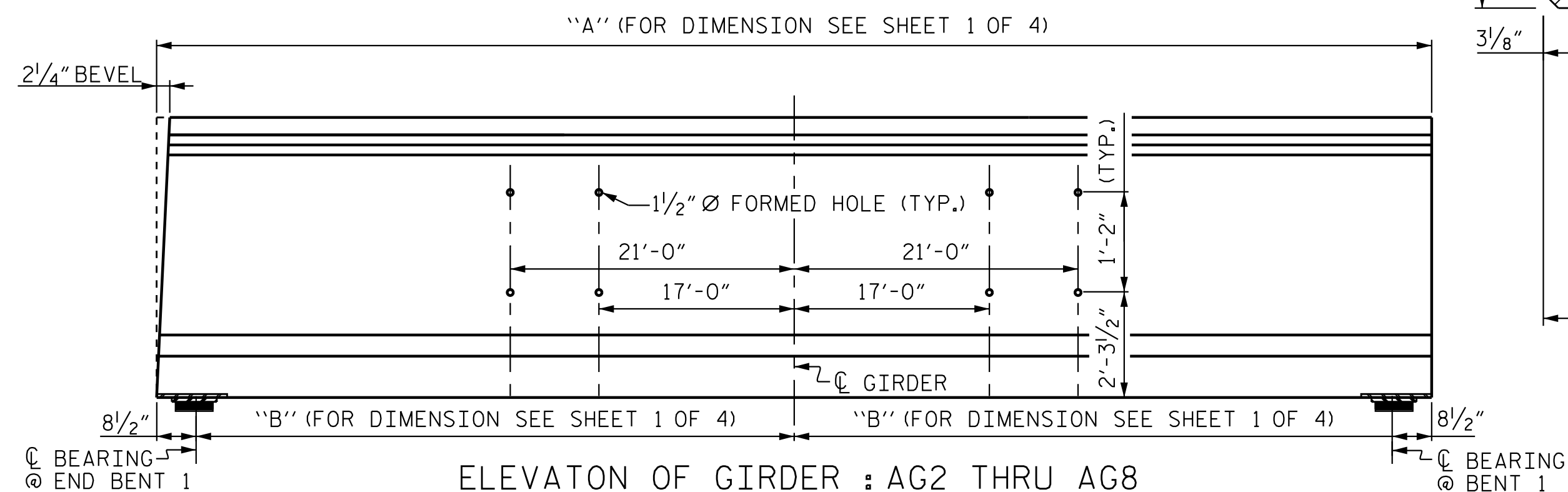
ELEVATION OF GIRDER : AG9



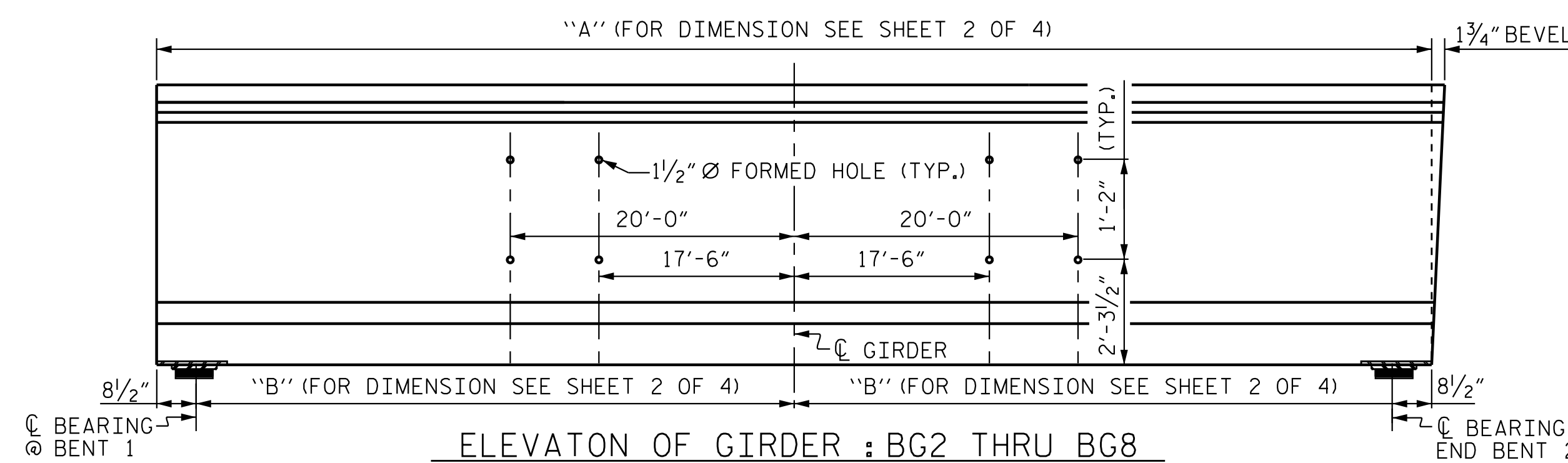
ELEVATION OF GIRDER: BG1



ELEVATION OF GIRDER : BG9



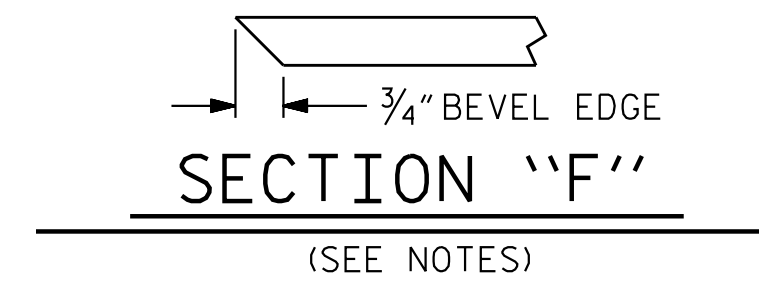
ELEVATION OF GIRDER : AG2 THRU AG8



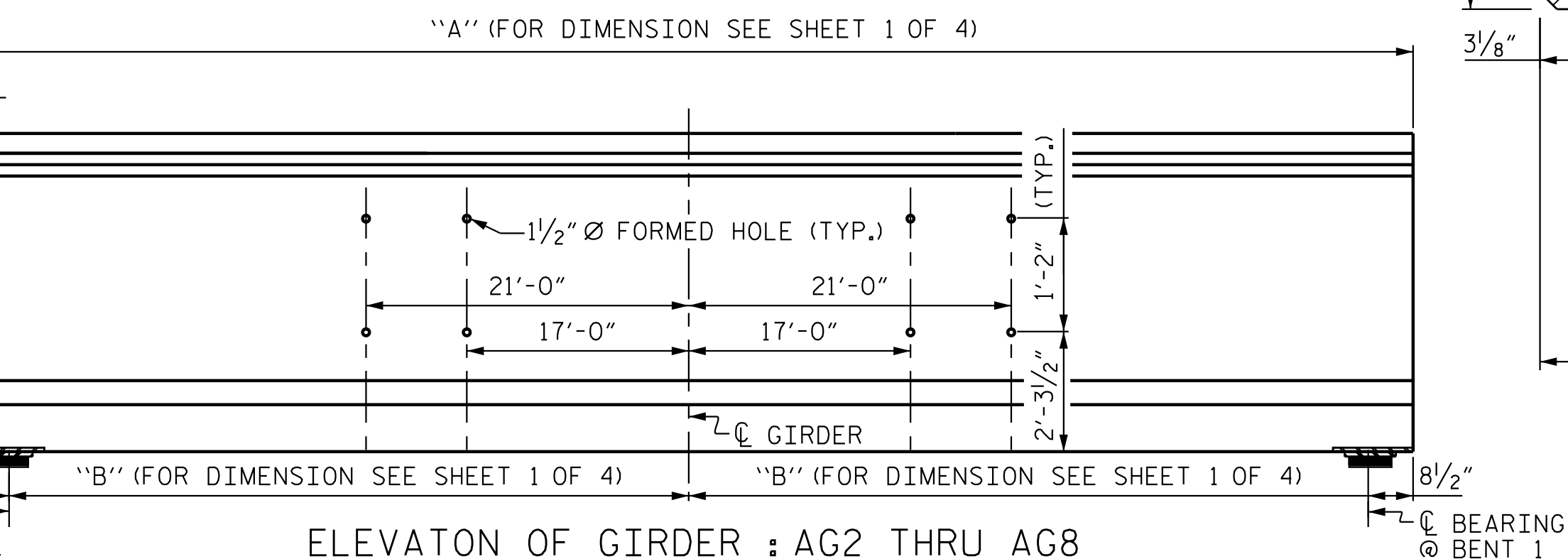
ELEVATION OF GIRDER : BG2 THRU BG8

EMBEDDED PLATE "B-1" DETAILS FOR FIB GIRDER

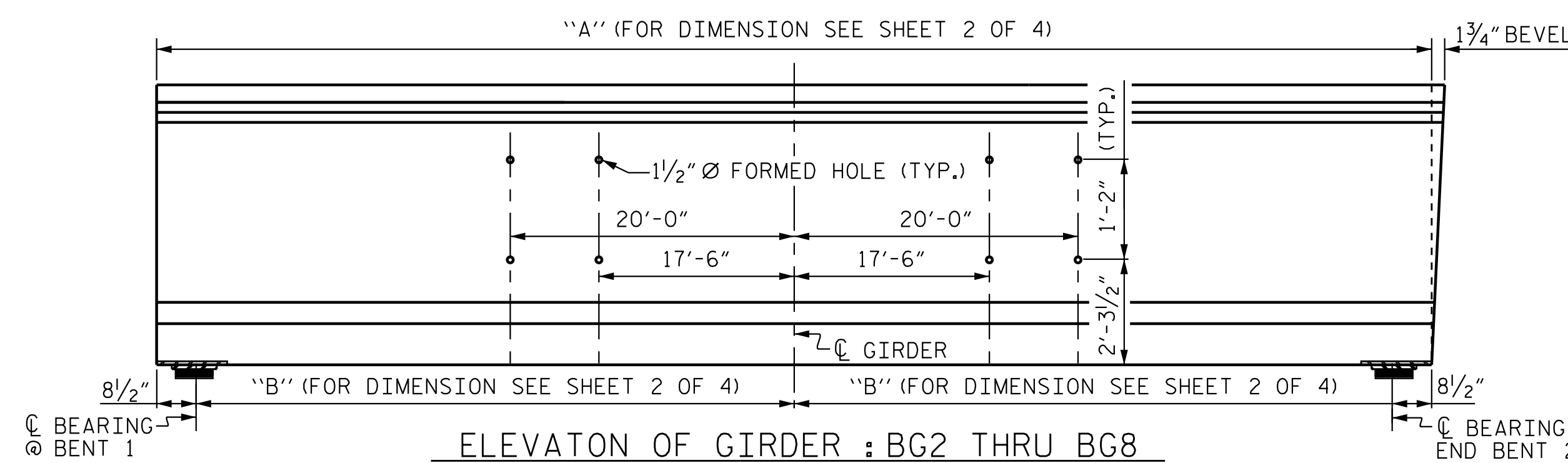
(2 REQ'D PER GIRDER)



(SEE NOTES)

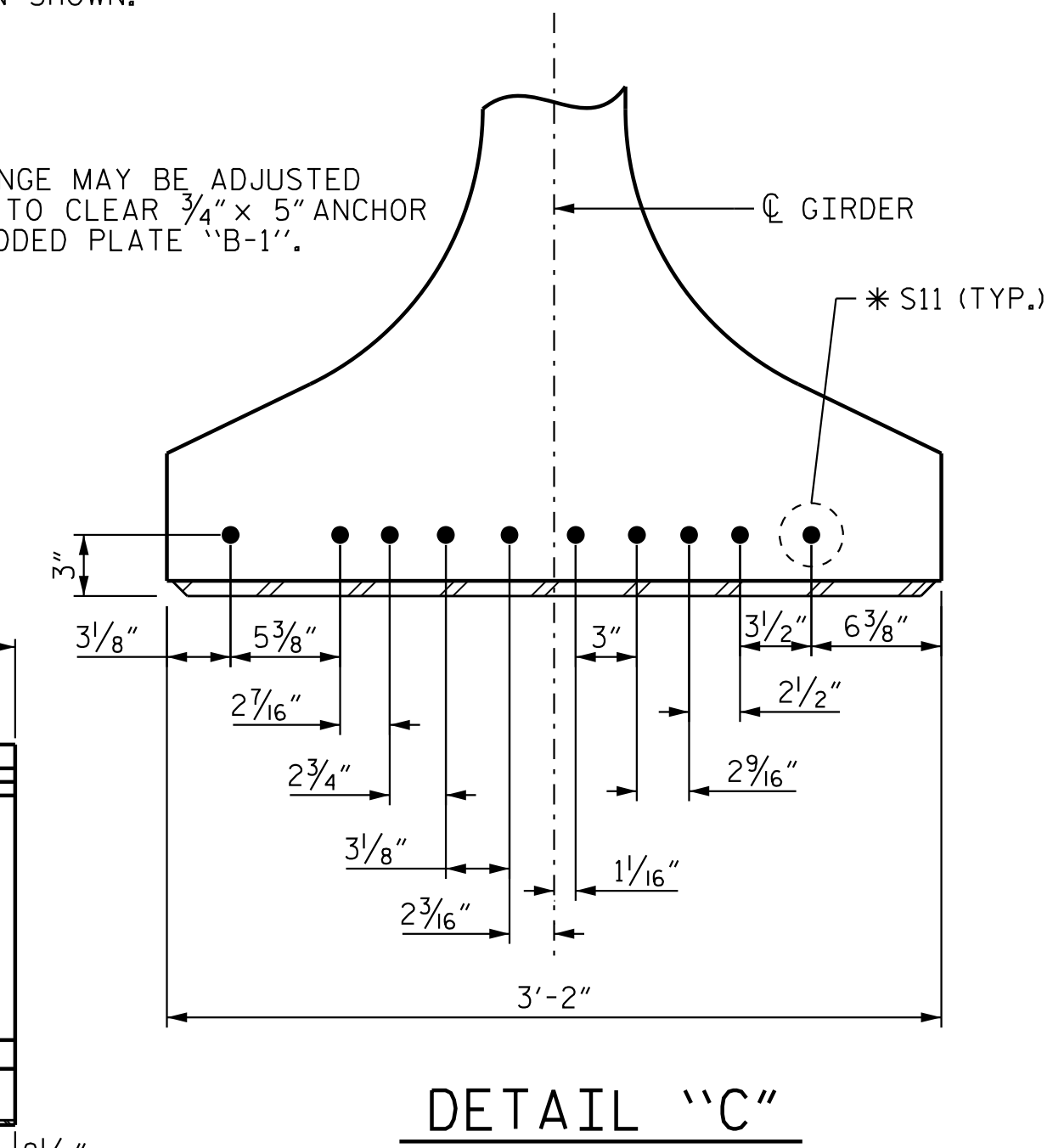


ELEVATION OF GIRDER : AG2 THRU AG8



ELEVATION OF GIRDER : BG2 THRU BG8

S11 BARS IN BOTTOM FLANGE MAY BE ADJUSTED SLIGHTLY AS NECESSARY TO CLEAR 3/4" x 5" ANCHOR STUDS MOUNTED ON EMBEDDED PLATE "B-1".



DETAIL "C"

DIAPHRAGM HOLE LOCATION PER GIRDER

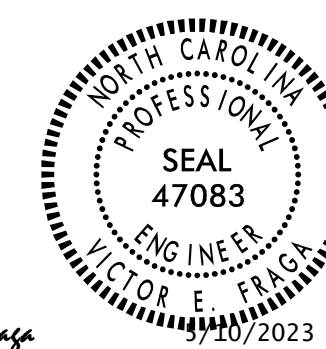
PRELIMINARY PLANS
DO NOT USE FOR CONSTRUCTION

PROJECT NO. R-2707D
CLEVELAND COUNTY
STATION: 36+78.38 -RAMP A-

SHEET 3 OF 4

STATE OF NORTH CAROLINA
DEPARTMENT OF TRANSPORTATION
RALEIGH

SUPERSTRUCTURE
54" PRESTRESSED
CONCRETE FLORIDA
I-BEAM GIRDER
CONTINUOUS FOR LIVE LOAD
DETAILS



DocuSigned by:
Victor E. Fraga
DOCUMENT NOT CONSIDERED
FINAL UNLESS ALL
SIGNATURES COMPLETED

REVISIONS						SHEET NO. S4-16
NO.	BY:	DATE:	NO.	BY:	DATE:	
1			3			TOTAL SHEETS 43
2			4			



Stantec Consulting Services Inc.
801 Jones Franklin Road
Suite 300
Raleigh, NC 27606
Tel. (919) 851-6866
Fax. (919) 851-7024
www.stantec.com
License No. F-0672

DRAWN BY : M. B. ISENHOUR DATE : 12/09/22
CHECKED BY : V. E. FRAGA DATE : 01/12/23
DESIGN ENGINEER OF RECORD: V. E. FRAGA DATE : 05/09/23

2023-05-05 10:20:48 vfr:ag9 c:\users\vfraga\documents\p_w_working\mms55432\p2707D_SML_C03_220491.dgn