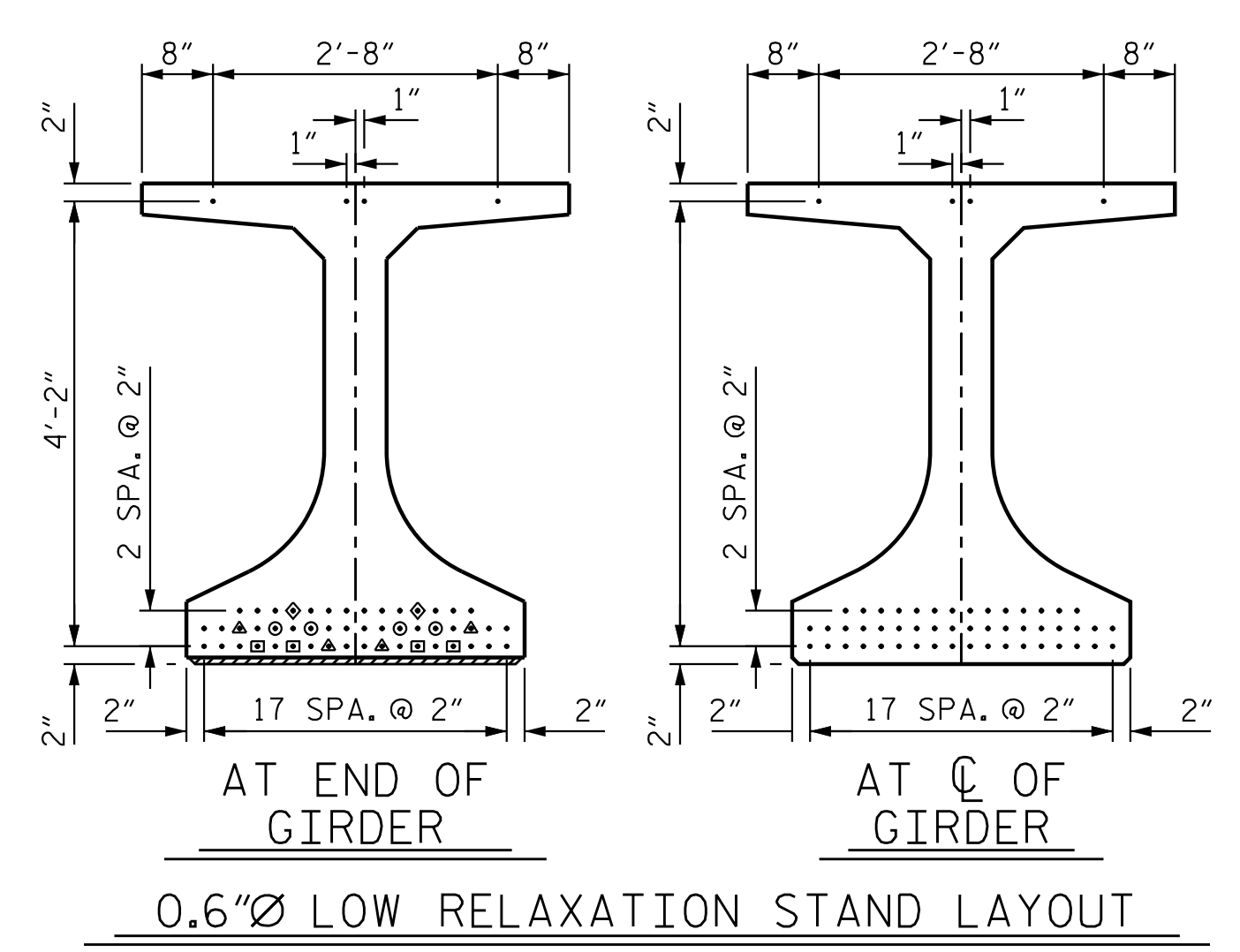


*** NOTE:**
S11 BARS SHALL BE BENT BEFORE SHIPMENT. HEAT BENDING SHALL NOT BE ALLOWED.

1/2" * FORMED HOLE. (SEE FRAMING PLAN FOR LOCATION)

DEBONDING LEGEND

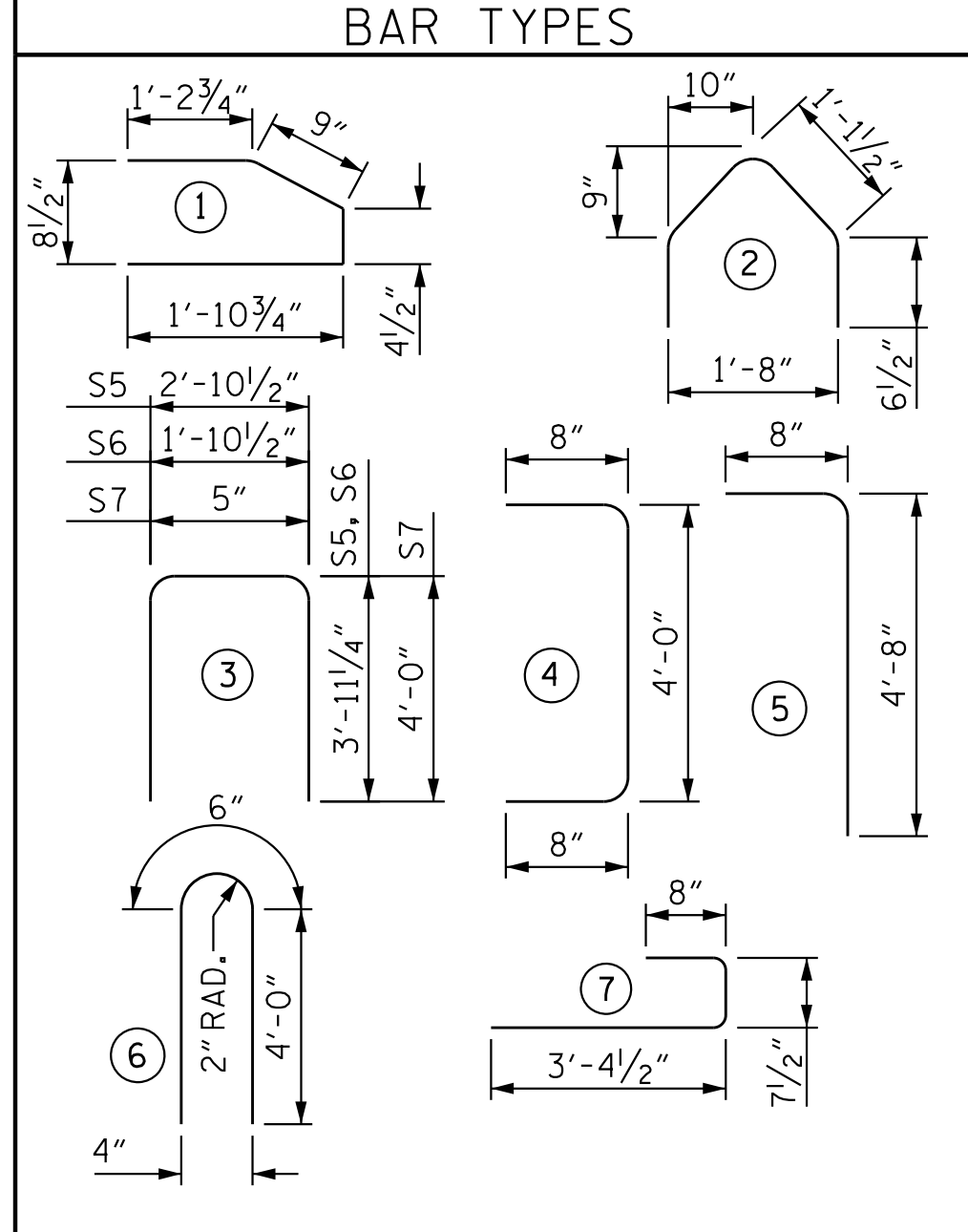
- FULLY BONDED STRANDS
- STRANDS DEBONDED FOR 4'-0" FROM END OF GIRDER
- STRANDS DEBONDED FOR 7'-0" FROM END OF GIRDER
- STRANDS DEBONDED FOR 10'-0" FROM END OF GIRDER
- STRANDS DEBONDED FOR 13'-0" FROM END OF GIRDER



EXTERIOR GDR.
INTERIOR GDR.

0.6"Ø L. R. GRADE 270 STRANDS		
AREA (SQ. INCHES)	ULTIMATE STRENGTH (LBS. PER STRAND)	APPLIED PRESTRESS (LBS. PER STRAND)
0.217	58,600	43,950

REINFORCING STEEL FOR ONE GDR					
BAR	NUMBER	SIZE	TYPE	LENGTH	WEIGHT
S1	96	#5	5	5'-4"	534
S2	32	#5	4	5'-4"	178
S3	48	#3	2	3'-4"	60
S4	96	#3	1	4'-3"	153
S5	1	#5	3	10'-9"	11
S6	2	#5	3	9'-9"	20
S7	8	#4	3	8'-5"	45
S8	218	#5	7	4'-8"	1,061
S9	122	#5	5	5'-4"	679
S10	60	#5	STR	3'-8"	229
S11	10	#6	STR	4'-8"	70
S12	8	#5	6	8'-6"	71
S12	16	#5	6	8'-6"	142
S13	1	#3	STR	2'-10"	1
S14	10	#4	STR	12'-0"	80



ALL BAR DIMENSIONS ARE OUT-TO-OUT

QUANTITIES FOR ONE GIRDER		
REINFORCING STEEL	9,000 PSI CONCRETE	0.6" * L.R. STRANDS
LB.	AVERAGE C.Y.	No.
EXT. GDR. 3,192	27.6	54
INT. GDR. 3,263		

GIRDERS REQUIRED		
NUMBER	AVERAGE LENGTH	TOTAL LENGTH
9	114'-10 3/16"	1033.6

PROJECT NO. R-2707D
CLEVELAND COUNTY
 STATION: 36+78.38 -RAMP A-

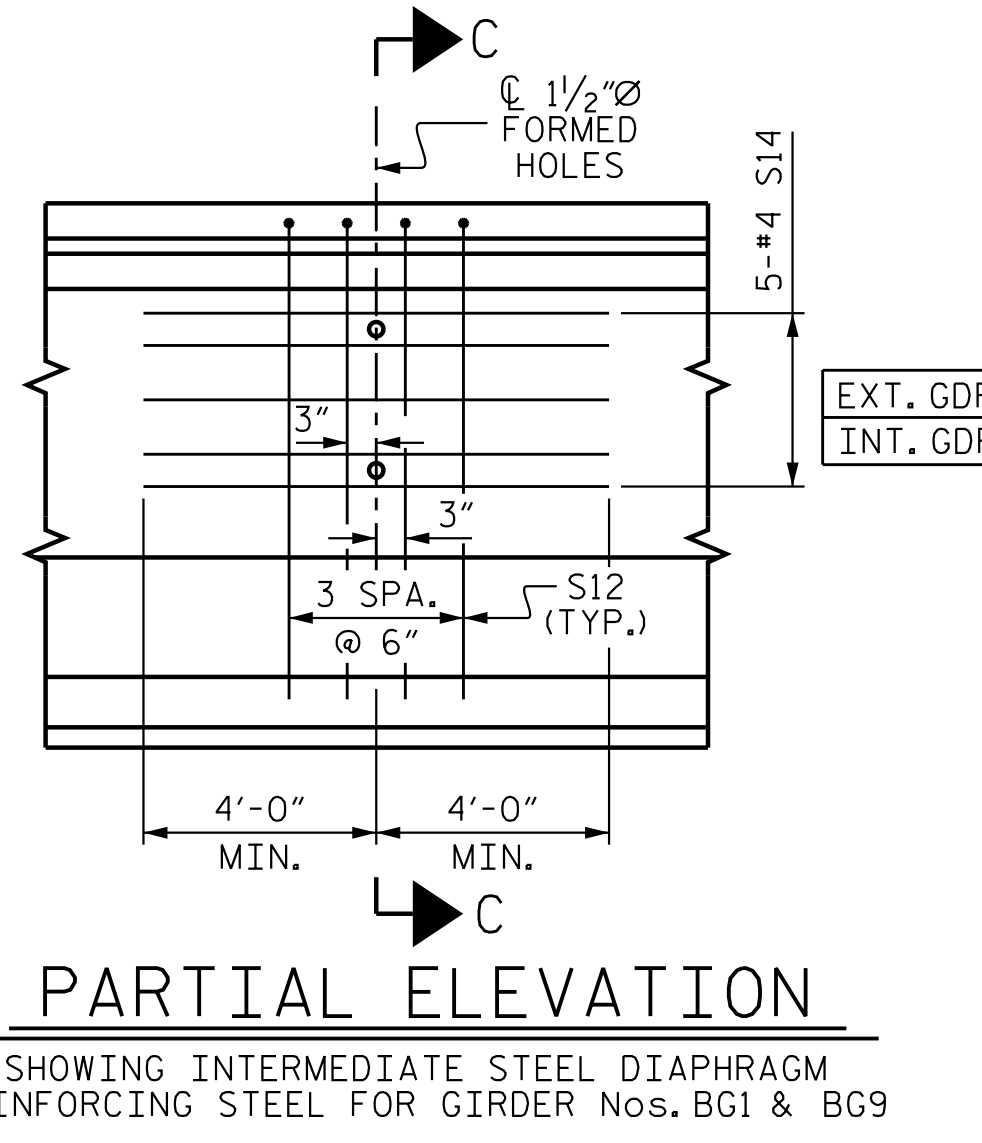
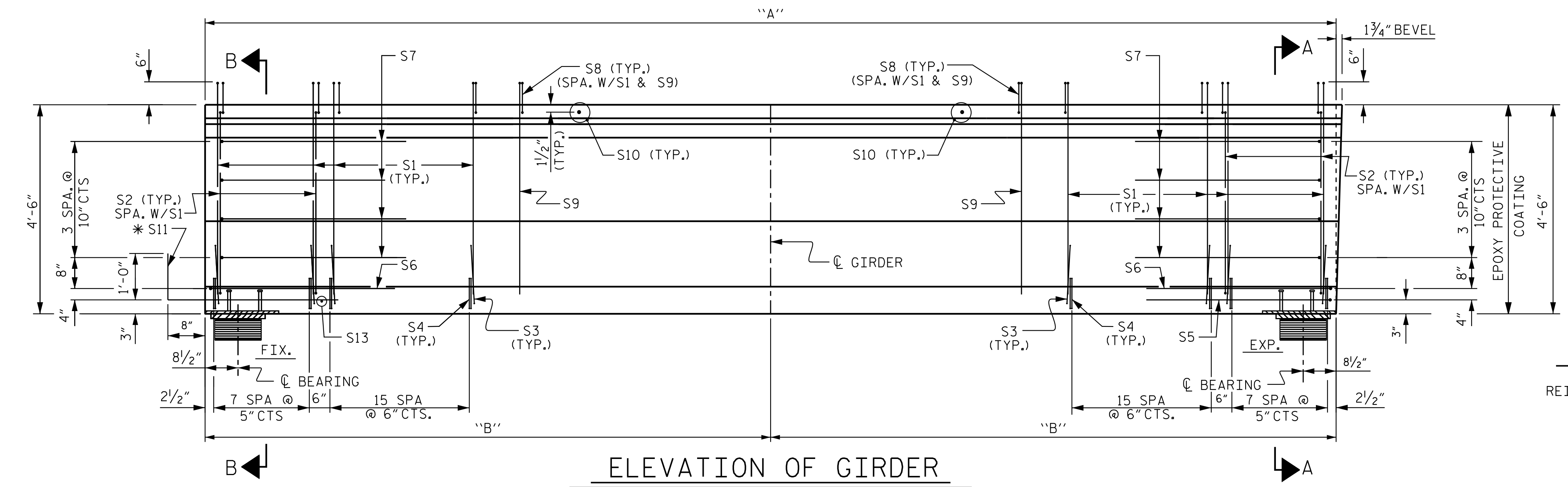
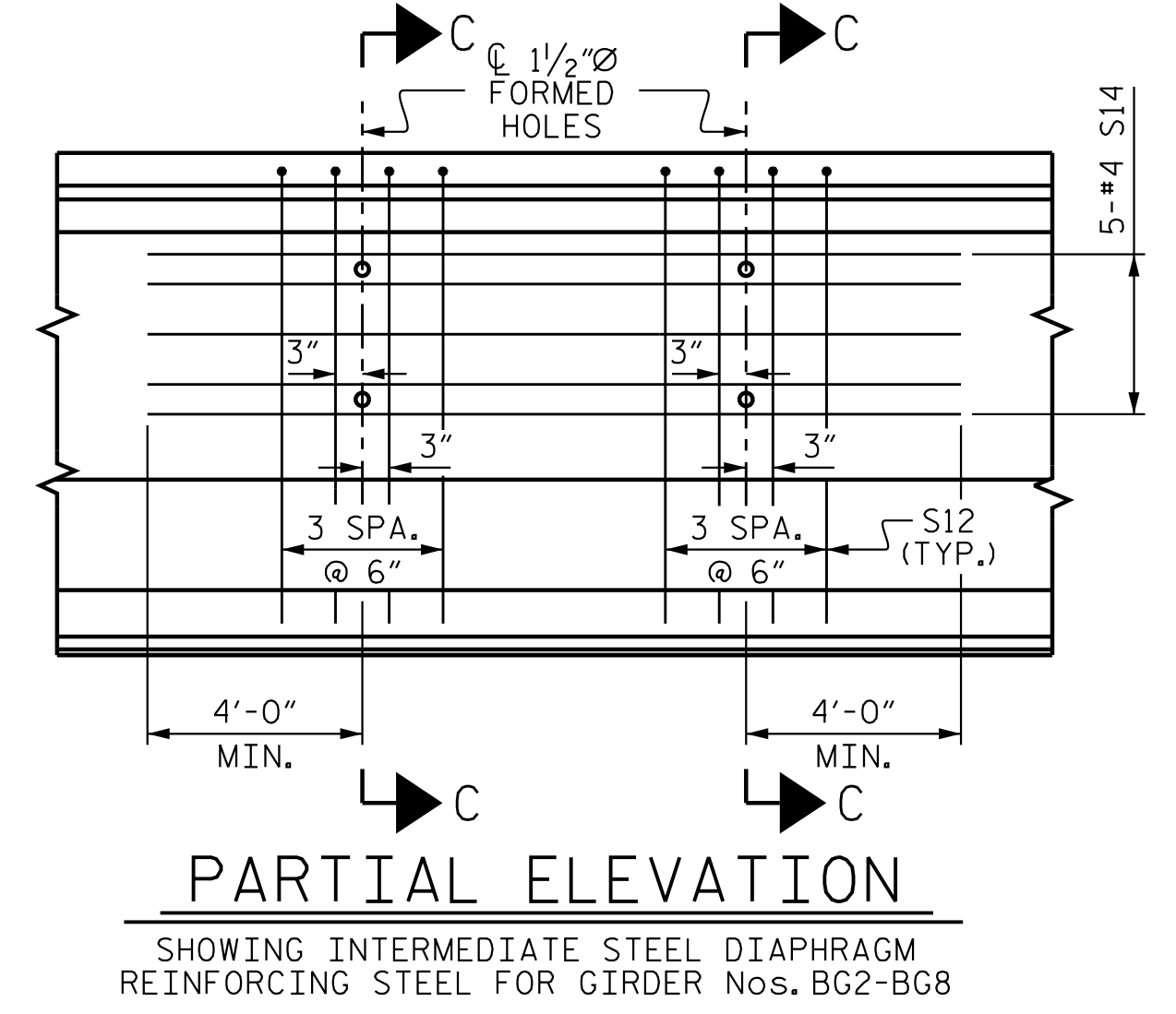
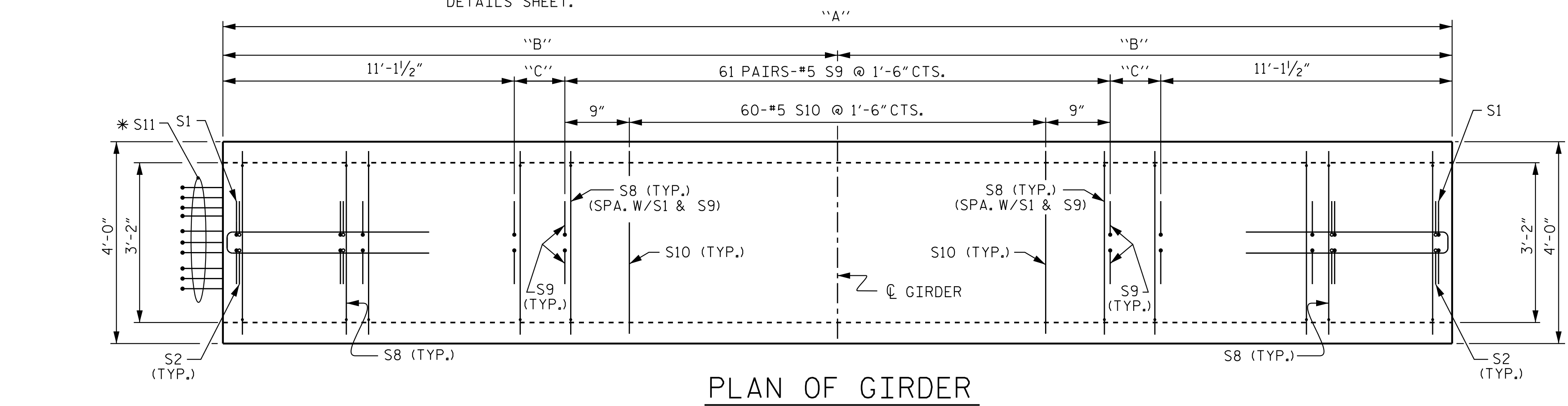
SHEET 2 OF 4

STATE OF NORTH CAROLINA
 DEPARTMENT OF TRANSPORTATION
 RALEIGH
 SUPERSTRUCTURE
 54" PRESTRESSED CONCRETE
 FLORIDA I-BEAM GIRDER
 CONTINUOUS FOR LIVE LOAD
 (SPAN B)

SEAL 47083
 VICTOR E. FRAGA
 LICENSE NO. 2023

REVISIONS					
NO.	BY:	DATE:	NO.	BY:	DATE:
1			3		
2			4		

SHEET NO. S4-15
 TOTAL SHEETS 43



**PRELIMINARY PLANS
 DO NOT USE FOR CONSTRUCTION**

Stantec Consulting Services Inc.
 801 Jones Franklin Road
 Suite 300
 Raleigh, NC 27606
 Tel. (919) 851-6866
 Fax. (919) 851-7024
 www.stantec.com
 License No. F-0672

GIRDER DIMENSION TABLE (ALONG GIRDER SLOPE)									
	GIRDER 1	GIRDER 2	GIRDER 3	GIRDER 4	GIRDER 5	GIRDER 6	GIRDER 7	GIRDER 8	GIRDER 9
"A"	115'-2 7/8"	115'-1 3/4"	115'-0 5/8"	114'-10 7/8"	114'-9 7/8"	114'-8 7/8"	114'-7 7/8"	114'-7"	114'-6"
"B"	57'-7 7/16"	57'-6 7/8"	57'-6 5/16"	57'-5 1/16"	57'-4 9/16"	57'-4 7/16"	57'-3 9/16"	57'-3 1/2"	57'-3"
"C"	1'-5 5/16"	1'-5 3/8"	1'-4 3/16"	1'-3 15/16"	1'-3 7/16"	1'-2 31/16"	1'-2 7/16"	1'-2"	1'-1 1/2"

DocuSigned by:
 Victor E. Fraga
 DOCUMENT NOT CONSIDERED
 FINAL UNLESS ALL
 SIGNATURES COMPLETED

2023-05-05 15:20:05 vfr090
 c:\Users\vfraga\documents\p_w_working\ms5432\2707D_SML_C02_220491.dgn