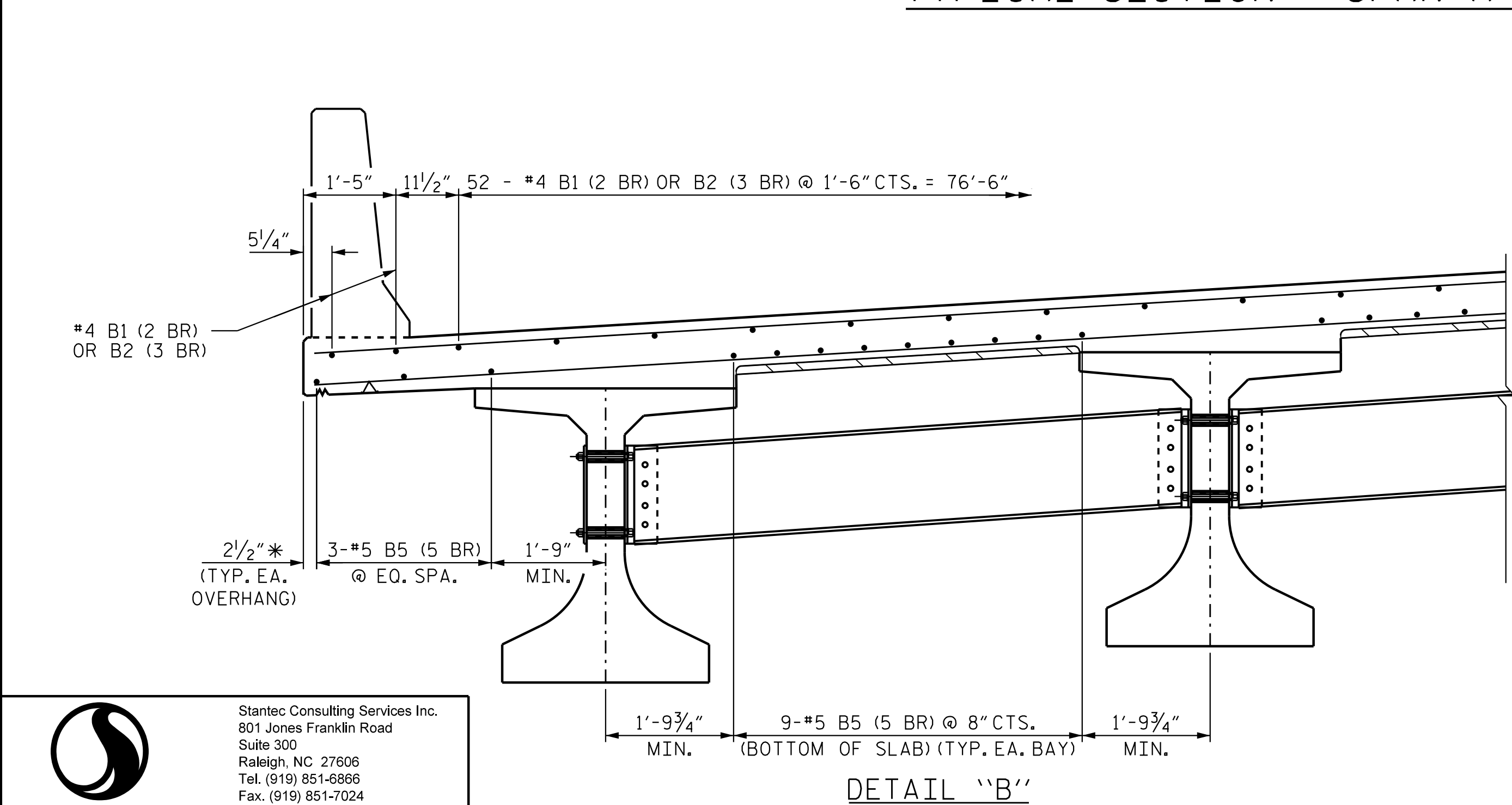
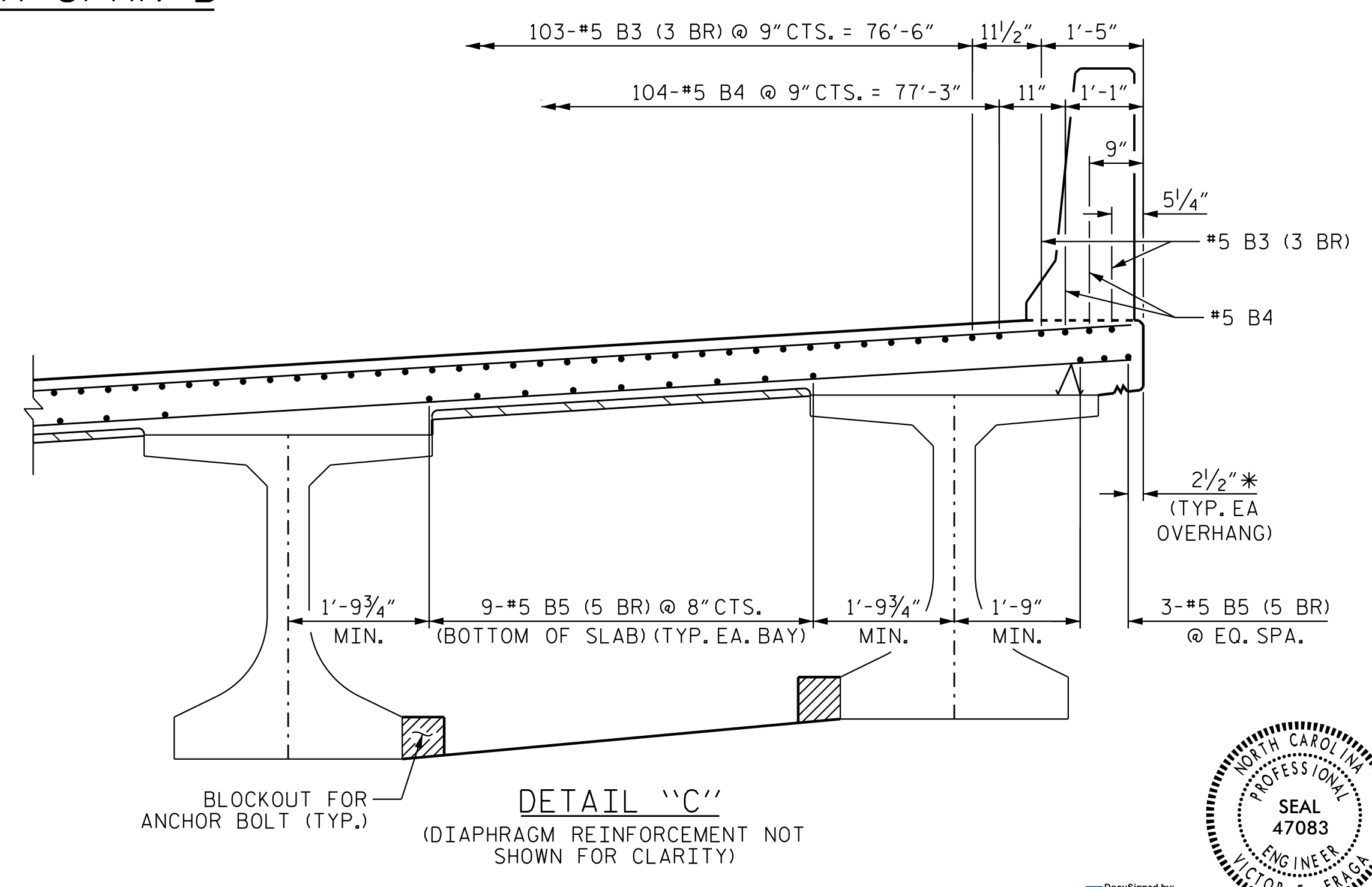


- NOTES**
- SEE "SUPERSTRUCTURE TYPICAL SECTION", SHEET 3 OF 3 FOR NOTES.
 - * DENOTES RADIAL DIMENSION
 - ** NOMINAL DIMENSION. GIRDERS ARE PLACED ALONG CHORDS INTERSECTING CONCENTRIC ARCS AT END BENT FILL FACES AND BENT CONTROL LINE. SEE FRAMING PLAN FOR MORE DETAIL ON GIRDER PLACEMENT.
 - (2 BR) DENOTES 2 BAR RUN
(3 BR) DENOTES 3 BAR RUN
(5 BR) DENOTES 5 BAR RUN
 - △△ BASED ON PREDICTED FINAL CAMBER AND THEORETICAL GRADE LINE ELEVATIONS
 - Ⓐ 6-#4 U1 @ 10"CTS. W/ 24-#4 S4 PLACED AS SHOWN (SPA. ALONG CL OF DIAPH.) (TYP. EA. BAY)
- SEE SHEET 3 OF 3 FOR SECTION B-B

TYPICAL SECTION - SPAN A OR SPAN B



DETAIL "B"



DETAIL "C"
(DIAPHRAGM REINFORCEMENT NOT SHOWN FOR CLARITY)

**PRELIMINARY PLANS
DO NOT USE FOR CONSTRUCTION**

PROJECT NO. R-2707D
CLEVELAND COUNTY
 STATION: 36+78.38 -RAMP A-

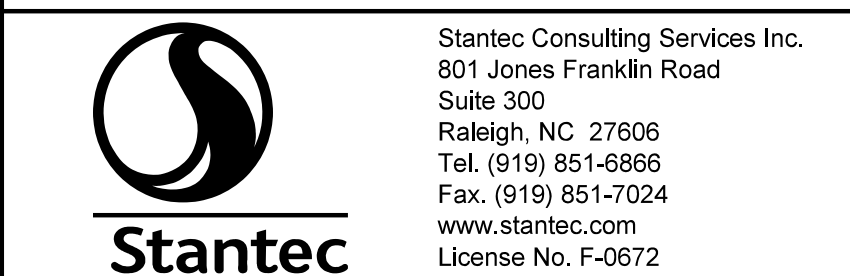
SHEET 2 OF 3

STATE OF NORTH CAROLINA
 DEPARTMENT OF TRANSPORTATION
 RALEIGH
 SUPERSTRUCTURE
 TYPICAL SECTION
 (MIDSPAN)



DocuSigned by:
Victor E. Fraga
 DOCUMENT NOT CONSIDERED
 FINAL UNLESS ALL
 SIGNATURES COMPLETED

REVISIONS						SHEET NO.
NO.	BY:	DATE:	NO.	BY:	DATE:	S4-08
1			3			TOTAL SHEETS
2			4			43



DRAWN BY : M. B. ISENHOUR DATE : 12/20/22
 CHECKED BY : V. E. FRAGA DATE : 01/05/23
 DESIGN ENGINEER OF RECORD: V. E. FRAGA DATE : 05/09/23

2023-05-05 18:52 vfraga
 2023-05-05 18:52 vfraga
 2023-05-05 18:52 vfraga