

NOTES

SEE "SUPERSTRUCTURE TYPICAL SECTION", SHEET 3 OF 3 FOR NOTES.

FOR #4 B1 (2 BR) OR B2 (3 BR) SPACING, SEE TYPICAL SECTION (MIDSPAN) SHEET 2 OF 3.

FOR #6 B5 (5 BR) SPACING, SEE TYPICAL SECTION (MIDSPAN) SHEET 2 OF 3.

* DENOTES RADIAL DIMENSION

** NOMINAL DIMENSION. GIRDERS ARE PLACED ALONG CHORDS INTERSECTING CONCENTRIC ARCS AT END BENT FILL FACES AND BENT CONTROL LINE. SEE FRAMING PLAN FOR MORE DETAIL ON GIRDER PLACEMENT.

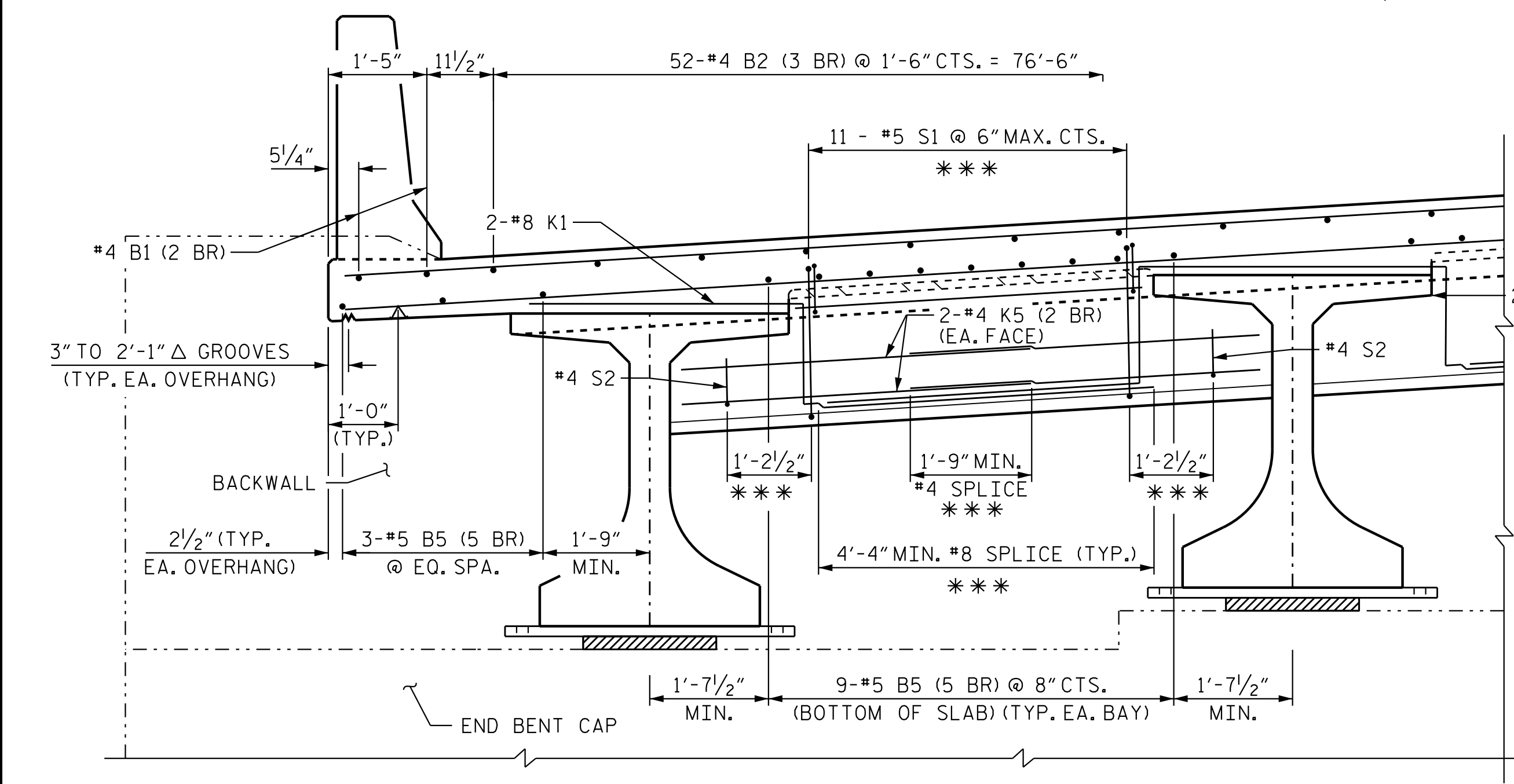
*** DIMENSION IS MEASURED ALONG ϕ END BENT.

(2 BR) DENOTES 2 BAR RUN
(3 BR) DENOTES 3 BAR RUN
(5 BR) DENOTES 5 BAR RUN

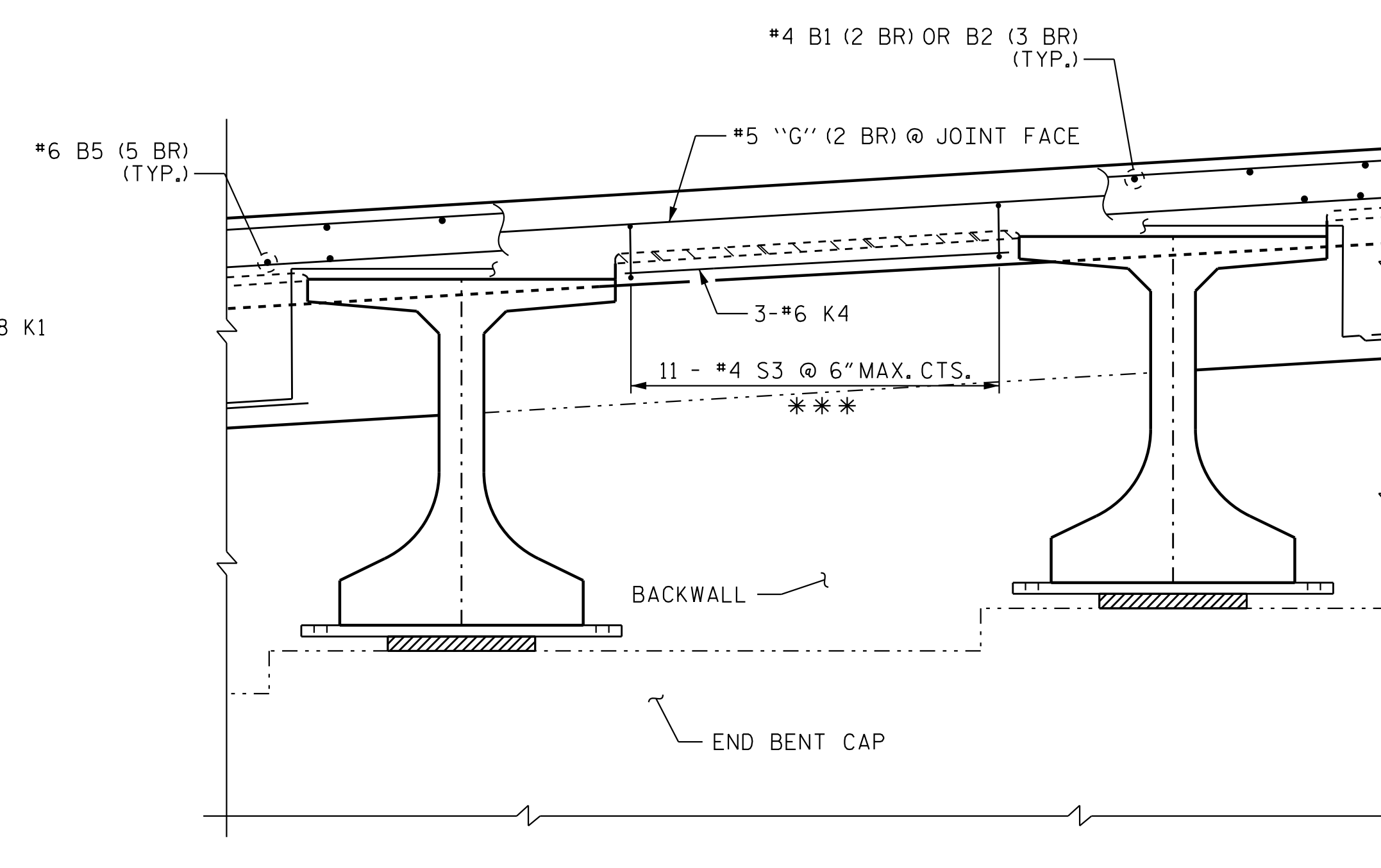
SEE SHEET 3 OF 3 FOR SECTION A-A.

TYPICAL SECTION - AT END BENTS

SECTION AT END BENT 2, END BENT 1 SECTION SIMILAR



DETAIL "A"



DETAIL BEHIND END BENT DIAPHRAGM

**PRELIMINARY PLANS
DO NOT USE FOR CONSTRUCTION**

PROJECT NO. R-2707D
CLEVELAND COUNTY
STATION: 36+78.38 -RAMP A-

SHEET 1 OF 3

STATE OF NORTH CAROLINA
DEPARTMENT OF TRANSPORTATION
RALEIGH
SUPERSTRUCTURE

**TYPICAL SECTION
(END BENTS)**



DocuSigned by:
Victor E. Fraga
05/09/2023

DOCUMENT NOT CONSIDERED
FINAL UNLESS ALL
SIGNATURES COMPLETED

REVISIONS						SHEET NO.
NO.	BY:	DATE:	NO.	BY:	DATE:	S4-07
1			3			TOTAL SHEETS
2			4			43

Stantec
Stantec Consulting Services Inc.
801 Jones Franklin Road
Suite 300
Raleigh, NC 27606
Tel. (919) 851-6866
Fax. (919) 851-7024
www.stantec.com
License No. F-0672

DRAWN BY: M. B. ISENHOUR DATE: 12/20/22
CHECKED BY: V. E. FRAGA DATE: 01/05/23
DESIGN ENGINEER OF RECORD: V. E. FRAGA DATE: 05/09/23

2023-05-05 16:49:49 vfr:agc
 C:\Users\vfraga\documents\p_w\working\ms55432\R2707D_SMUL_TSO1_220491.dgn