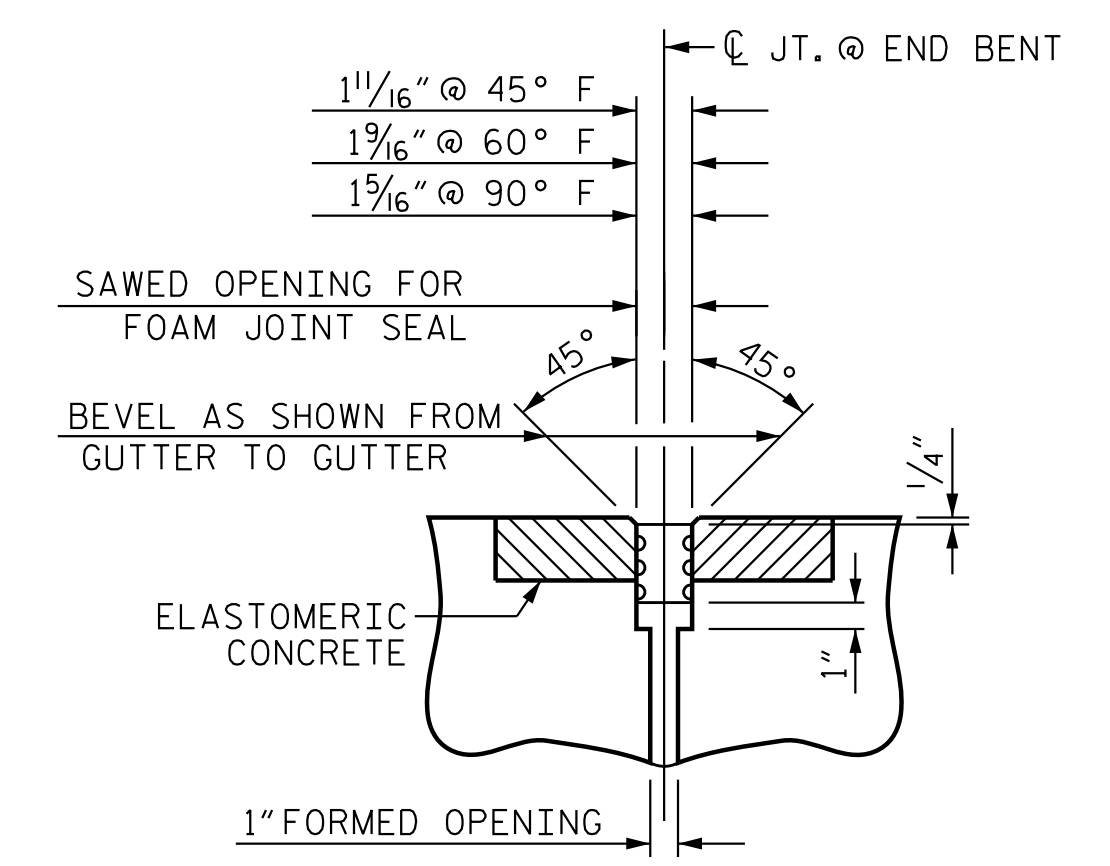


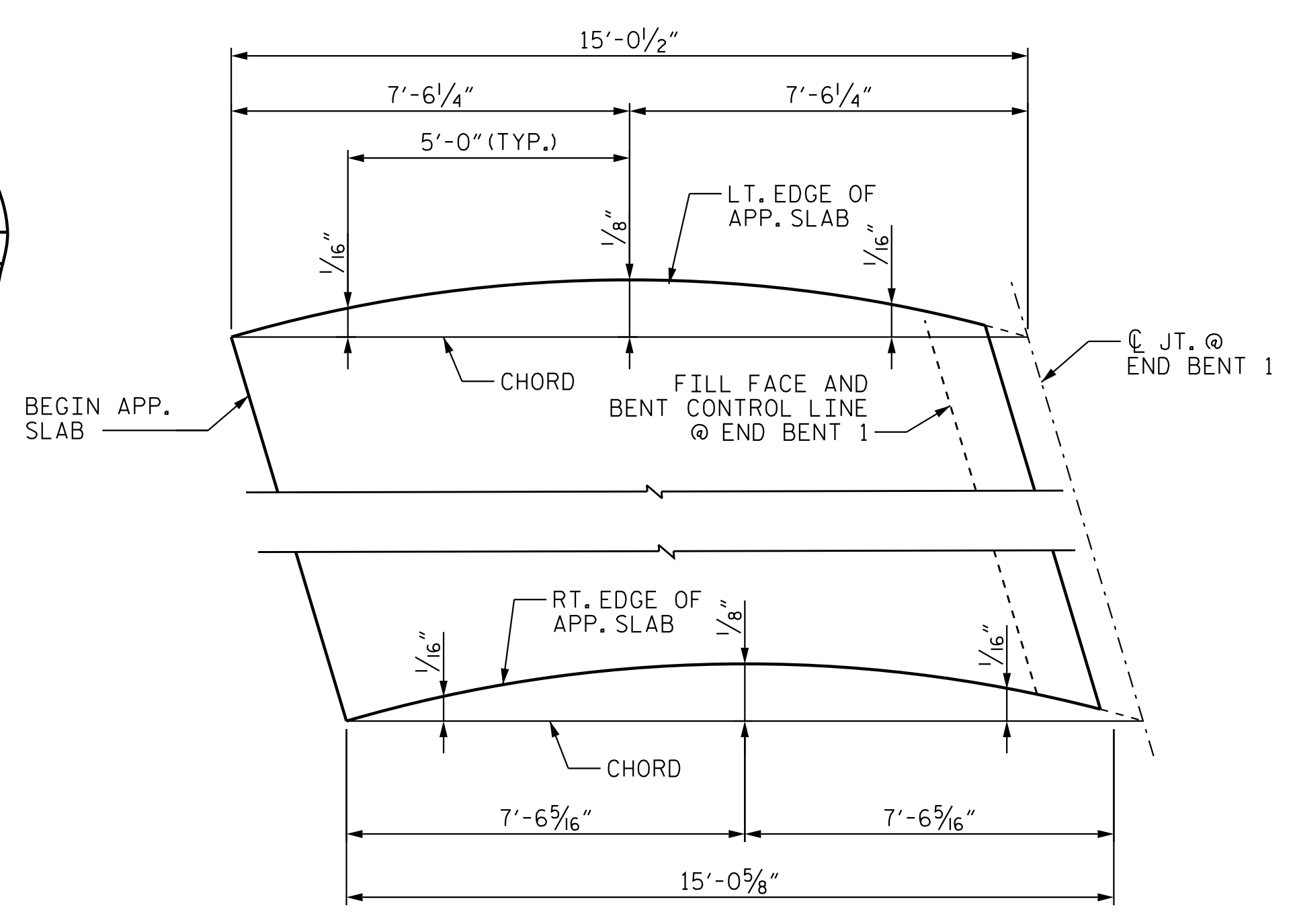
SECTION C-C
FOAM JOINT SEAL
(PRE-SAWED ELASTOMERIC CONCRETE DIMENSIONS)



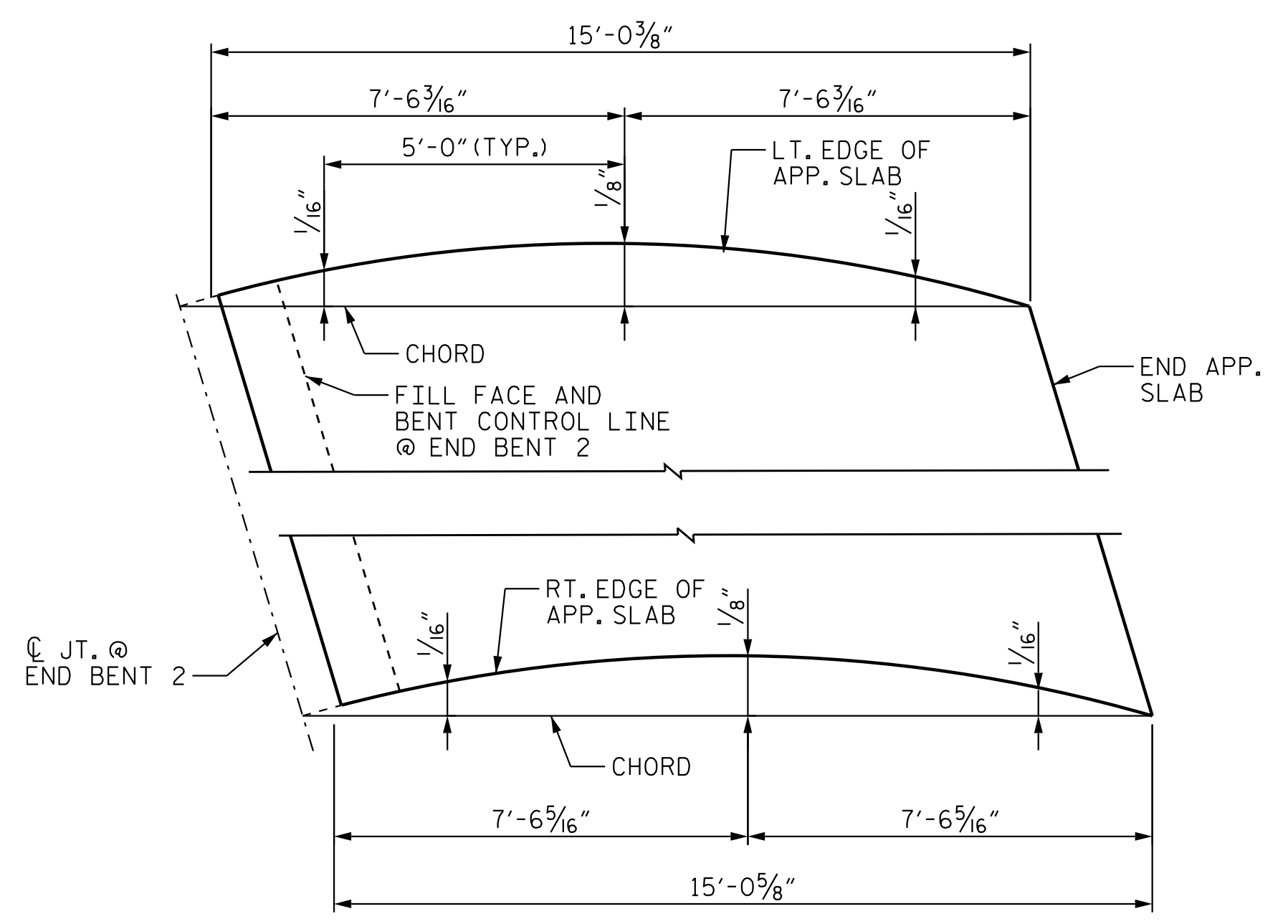
SECTION C-C
FOAM JOINT SEAL
(EXPANSION)

ELASTOMERIC CONCRETE	
END BENT NO.	ELASTOMERIC CONCRETE * (CU. FT.)
1	3.56
2	3.63
TOTAL	7.19

* BASED ON THE MINIMUM BLOCKOUT SHOWN.

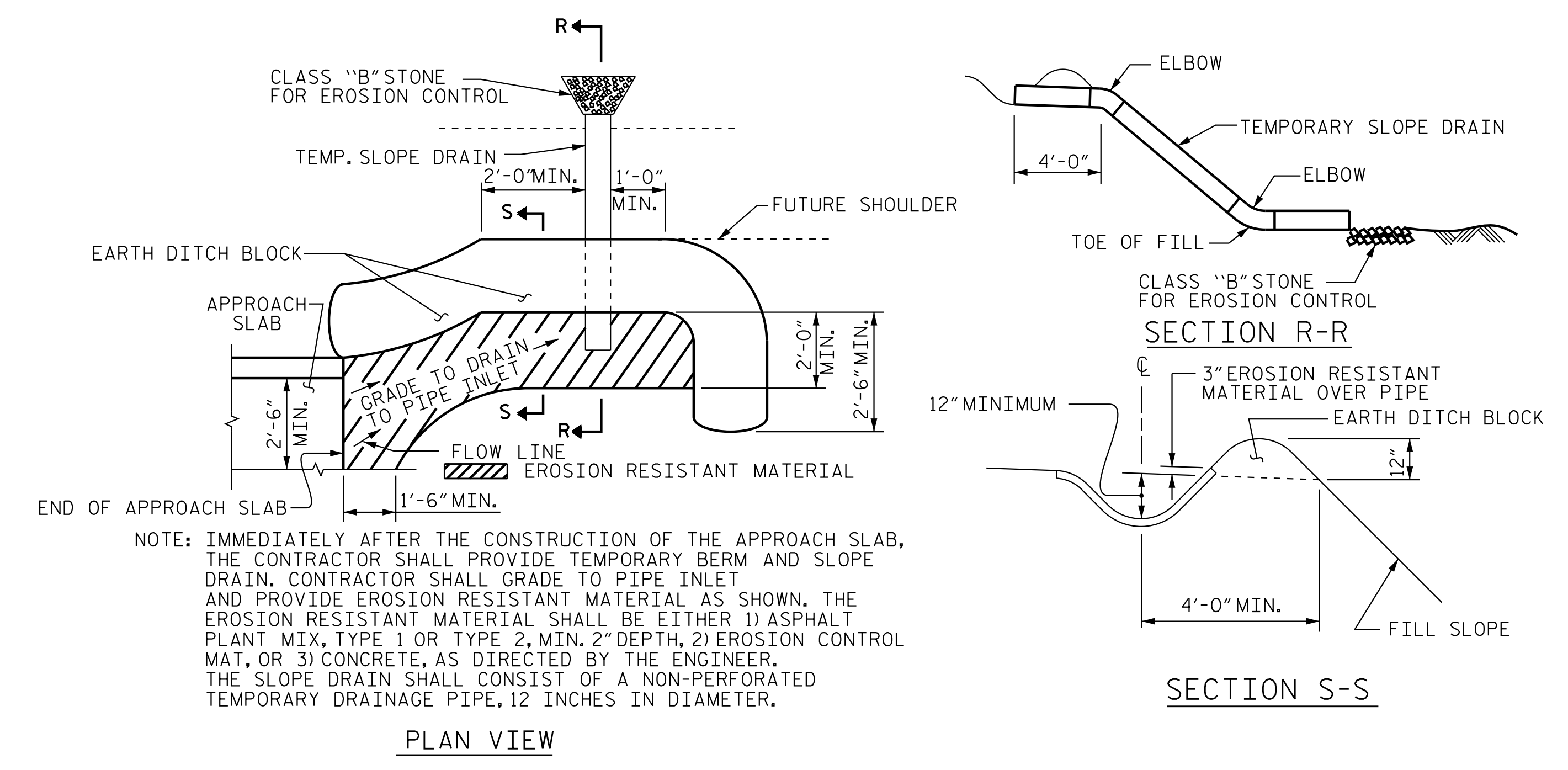


APPROACH SLAB @ END BENT 1



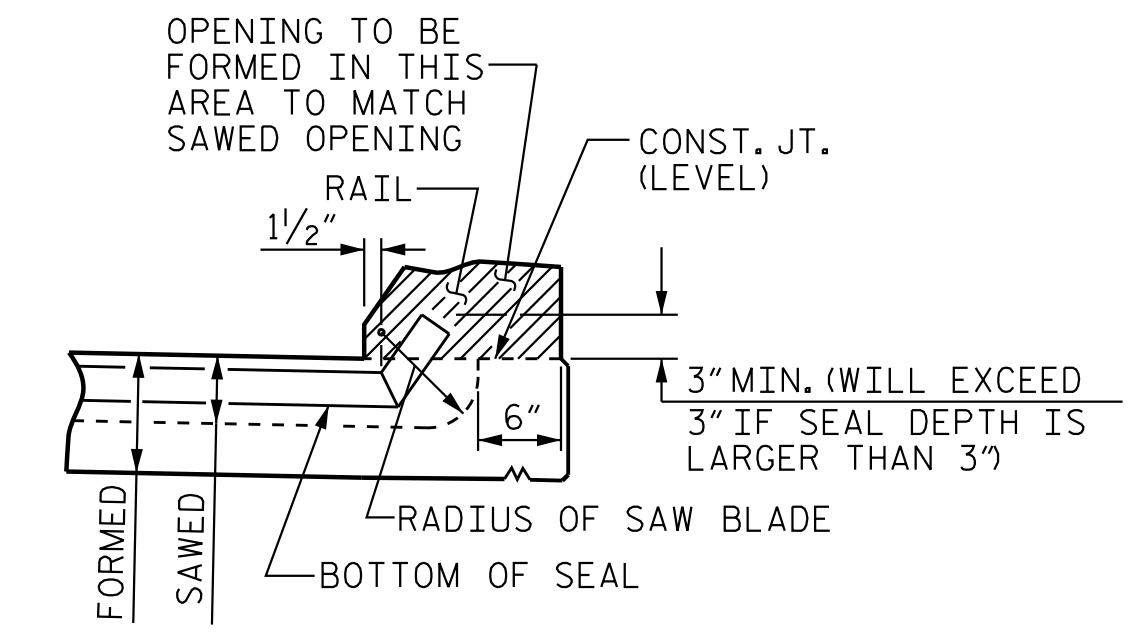
APPROACH SLAB @ END BENT 2

CHORD TO ARC OFFSETS

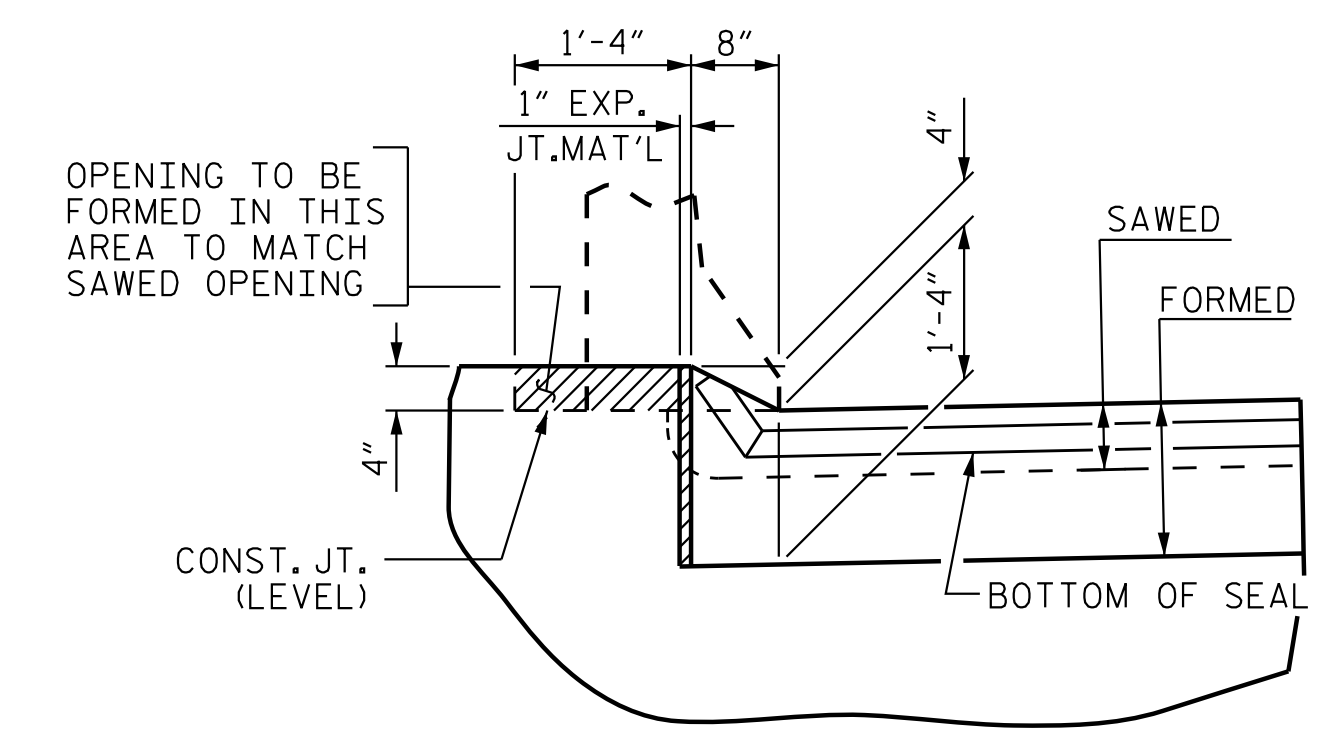


TEMPORARY BERM AND SLOPE DRAIN DETAILS

(TO BE USED WHEN SHOULDER BERM GUTTER IS REQUIRED)



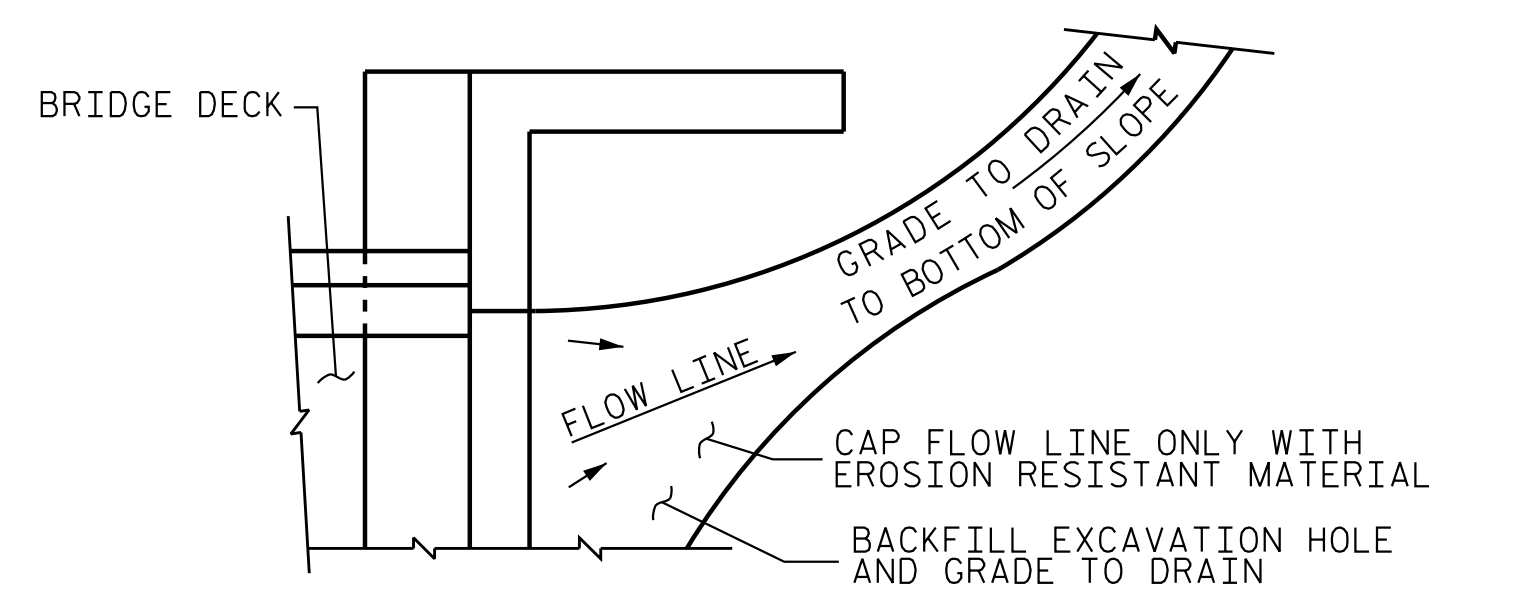
SECTION A-A



SECTION B-B

JOINT SEAL DETAILS @ END BENT

FOAM JOINT SEAL TO BE CUT, HEAT WELDED AND TURNED UP PARALLEL TO SLOPED FACE OF THE BARRIER RAIL.
THE JOINT SHALL BE SAWED PRIOR TO THE CASTING OF THE BARRIER RAIL.



NOTE: IF THE APPROACH SLAB IS NOT CONSTRUCTED IMMEDIATELY AFTER THE BACKFILLING OF THE END BENT EXCAVATION, GRADE TO DRAIN TO THE BOTTOM OF THE SLOPE AND PROVIDE EROSION RESISTANT MATERIAL, SUCH AS FIBERGLASS ROVING OR AS DIRECTED BY THE ENGINEER TO PREVENT SOIL EROSION AND TO PROTECT THE AREA ADJACENT TO THE STRUCTURE. THE CONTRACTOR WILL BE REQUIRED TO REMOVE THESE MATERIALS PRIOR TO CONSTRUCTION OF THE APPROACH SLAB.

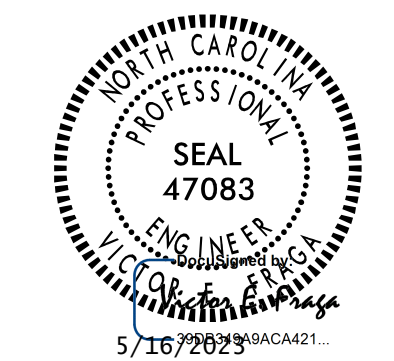
TEMPORARY DRAINAGE DETAIL

PROJECT NO. R-2707D
CLEVELAND COUNTY
STATION: 23+21.80 -Y3-

SHEET 2 OF 2

STATE OF NORTH CAROLINA
DEPARTMENT OF TRANSPORTATION
RALEIGH

STANDARD
BRIDGE APPROACH
SLAB DETAILS



REVISIONS						SHEET NO. S3-36
NO.	BY:	DATE:	NO.	BY:	DATE:	
1			3			TOTAL SHEETS 36
2			4			

DOCUMENT NOT CONSIDERED FINAL UNLESS ALL SIGNATURES COMPLETED

Stantec
Stantec Consulting Services Inc.
801 Jones Franklin Road
Suite 300
Raleigh, NC 27606
Tel. (919) 851-8866
Fax. (919) 851-7024
www.stantec.com
License No. F-0672

ASSEMBLED BY : J. B. GEILE	DATE : 06/06/18
CHECKED BY : V. E. FRAGA	DATE : 06/11/18
DRAWN BY : FCJ 11/88	REV. 6/13 MAA/GM
CHECKED BY : ARB 11/88	REV. 12/17 MAA/THC
	REV. 5/18 MAA/THC
DESIGN ENGINEER OF RECORD: V. E. FRAGA	DATE: 05/16/23