

BILL OF MATERIAL					
<b>APPROACH SLAB - END BENT 1</b>					
BAR	NO.	SIZE	TYPE	LENGTH	WEIGHT
*A1	30	#4	STR	22'-3"	446
A2	32	#4	STR	22'-1"	472
*B1	82	#5	STR	14'-1"	1,204
B2	82	#6	STR	14'-8"	1,806
REINFORCING STEEL				LBS.	2,278
* EPOXY COATED REINFORCING STEEL				LBS.	1,650
CLASS AA CONCRETE				C. Y.	27.0
<b>APPROACH SLAB - END BENT 2</b>					
BAR	NO.	SIZE	TYPE	LENGTH	WEIGHT
*A3	30	#4	STR	22'-8"	454
A4	32	#4	STR	22'-6"	481
*B1	82	#5	STR	14'-1"	1,204
B2	82	#6	STR	14'-8"	1,806
REINFORCING STEEL				LBS.	2,287
* EPOXY COATED REINFORCING STEEL				LBS.	1,658
CLASS AA CONCRETE				C. Y.	27.2

**NOTES**

FOR BRIDGE APPROACH FILL INCLUDING GEOTEXTILE, 6" Ø DRAINAGE PIPE, AND SELECT MATERIAL BACKFILL, SEE ROADWAY PLANS.

GEOTEXTILE SHALL BE TYPE 1 IN ACCORDANCE WITH THE STANDARD SPECIFICATIONS SECTION 1056.

SELECT MATERIAL BACKFILL (CLASS V OR CLASS VI) SHALL BE IN ACCORDANCE WITH STANDARD SPECIFICATIONS SECTION 1016.

SELECT MATERIAL BACKFILL IS TO BE CONTINUOUS ALONG FILL FACE OF BACKWALL FROM OUTSIDE EDGE TO OUTSIDE EDGE OF APPROACH SLAB.

APPROACH SLAB SHALL NOT BE CONSTRUCTED PRIOR TO COMPLETION OF THE BRIDGE DECK.

THE JOINT SHALL BE SAWS PRIOR TO THE CASTING OF THE BARRIER RAIL OR PARAPET AND END POST.

FOR THE 6" Ø DRAINAGE PIPE OUTLET(S), SEE ROADWAY STANDARD DRAWINGS.

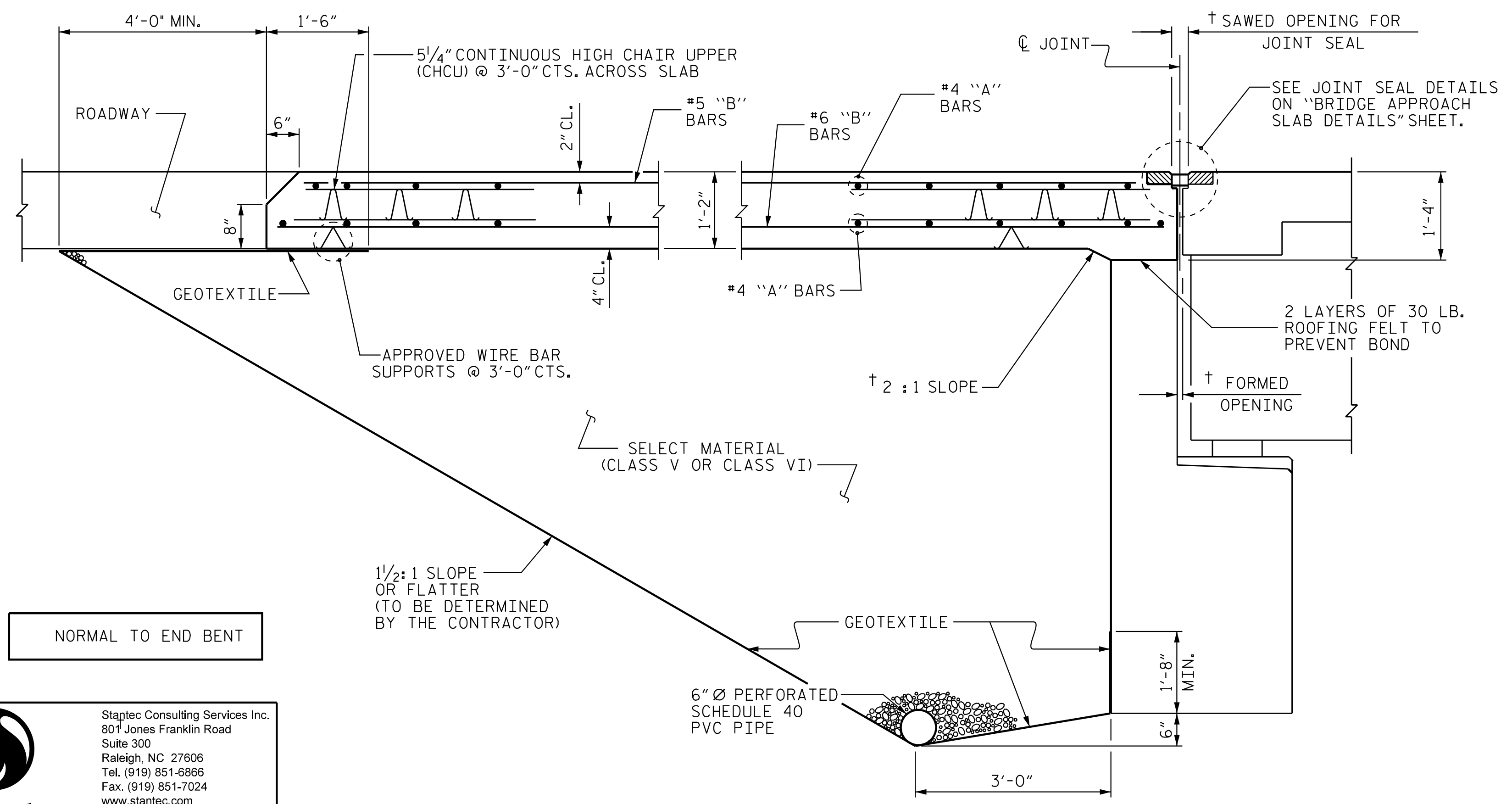
AREA BETWEEN THE WINGWALL AND APPROACH SLAB SHALL BE GRADED TO DRAIN THE WATER AWAY FROM THE FILL FACE OF THE BRIDGE AND SHALL BE PAVED. SEE ROADWAY PLANS.

WITH FOAM JOINT SEAL

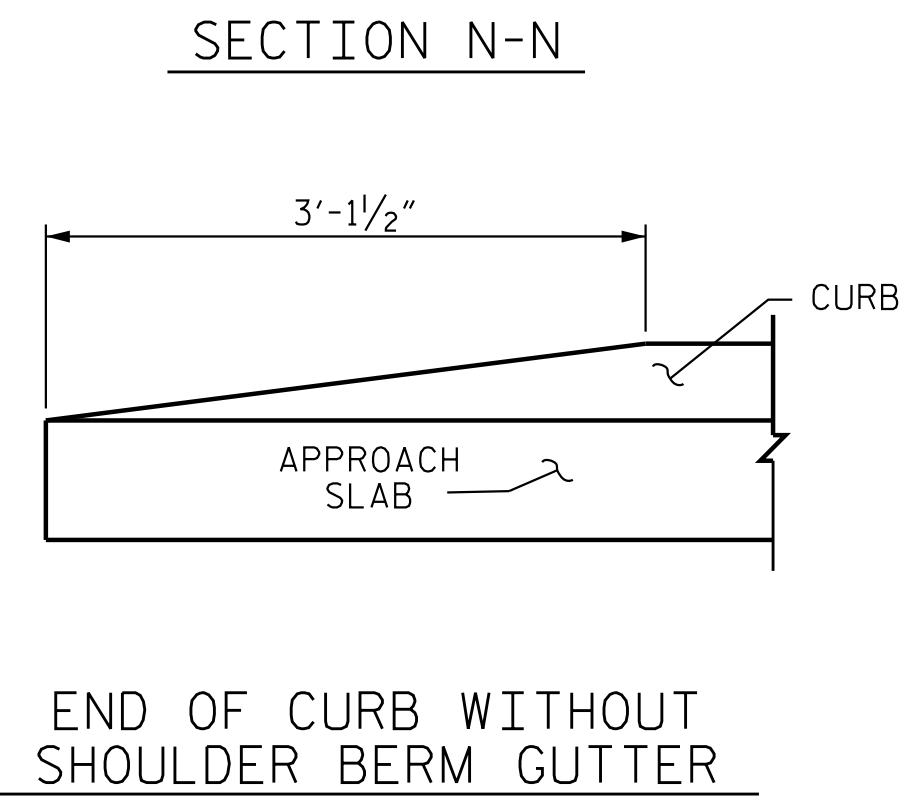
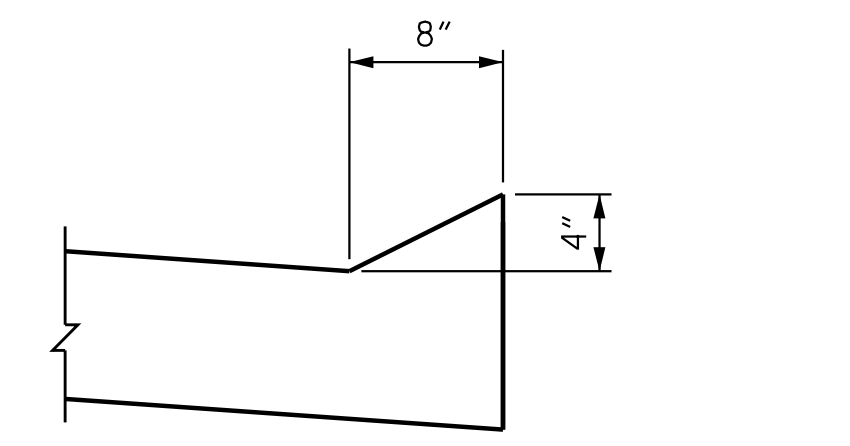
FOR FOAM JOINT SEALS, SEE SPECIAL PROVISIONS.

THE NOMINAL UNCOMPRESSED SEAL WIDTH OF THE FOAM JOINT SEAL SHALL BE 2".

FOR ELASTOMERIC CONCRETE, SEE SPECIAL PROVISIONS.



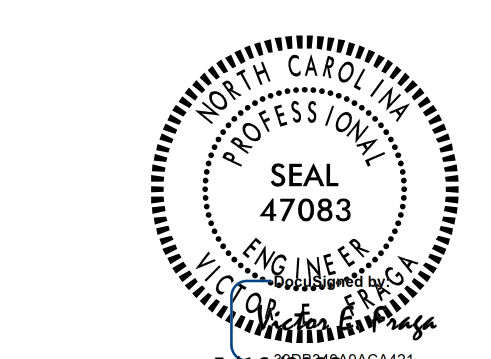
SPLICE LENGTHS		
BAR SIZE	EPOXY COATED	UNCOATED
#4	1'-11"	1'-7"
#5	2'-5"	2'-0"
#6	3'-7"	2'-5"



PROJECT NO. R-2707D  
CLEVELAND COUNTY  
 STATION: 23+21.80 -Y3-

SHEET 1 OF 2

STATE OF NORTH CAROLINA  
 DEPARTMENT OF TRANSPORTATION  
 RALEIGH  
 STANDARD  
 BRIDGE APPROACH SLAB  
 FOR FLEXIBLE PAVEMENT



REVISIONS						SHEET NO.	
NO.	BY:	DATE:	NO.	BY:	DATE:	S3-35	
1			3			TOTAL SHEETS	
2			4			36	

DOCUMENT NOT CONSIDERED FINAL UNLESS ALL SIGNATURES COMPLETED

5/16/2023 11:37:49 AM jHagenbush

Stantec Consulting Services Inc.  
 807 Jones Franklin Road  
 Suite 300  
 Raleigh, NC 27606  
 Tel. (919) 851-8866  
 Fax. (919) 851-7024  
 www.stantec.com  
 License No. F-0872

ASSEMBLED BY: V. E. FRAGA DATE: 06/06/18  
 CHECKED BY: T. N. ENNIS DATE: 09/11/18

DRAWN BY: EEM 3/95 REV. 6/13 MAA/GM DESIGN ENGINEER  
 CHECKED BY: VAP 3/95 REV. 12/17 MAA/THC ENGINEER OF RECORD  
 V. E. FRAGA DATE: 05/16/23

**SECTION THRU SLAB**  
 (TYPE I - STANDARD APPROACH FILL)