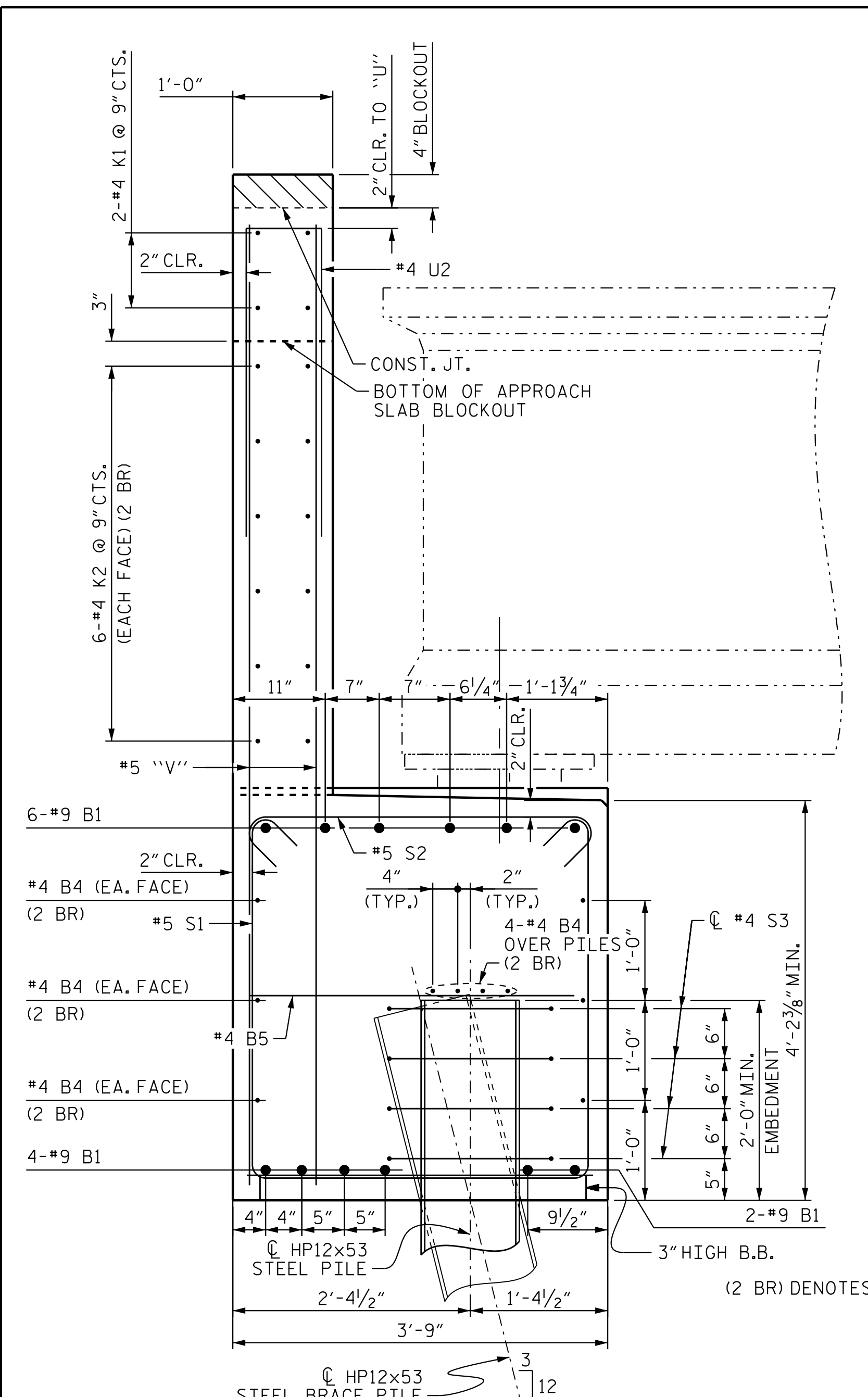
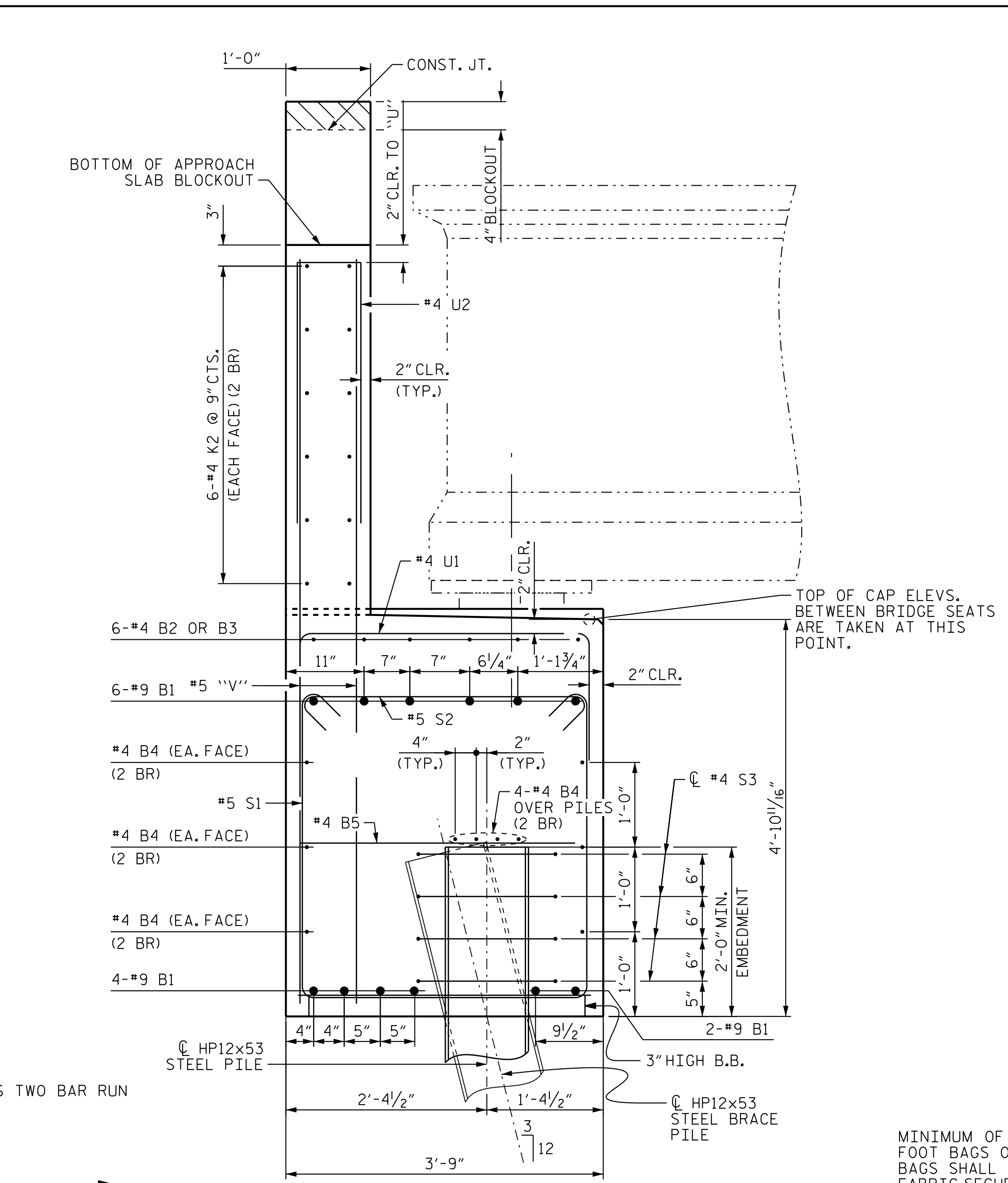


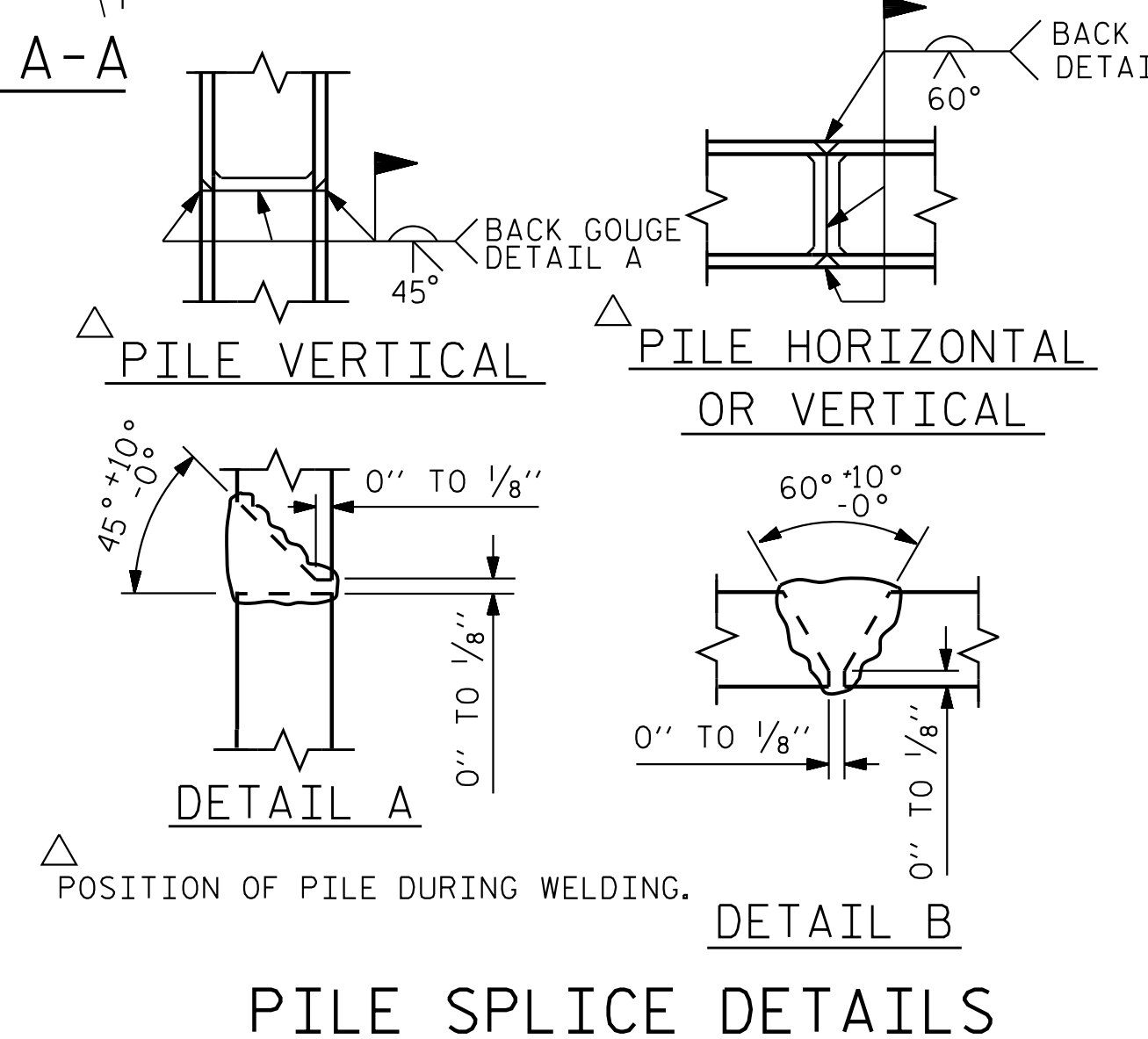
5/16/2023 11:36:29 AM jHagenbush



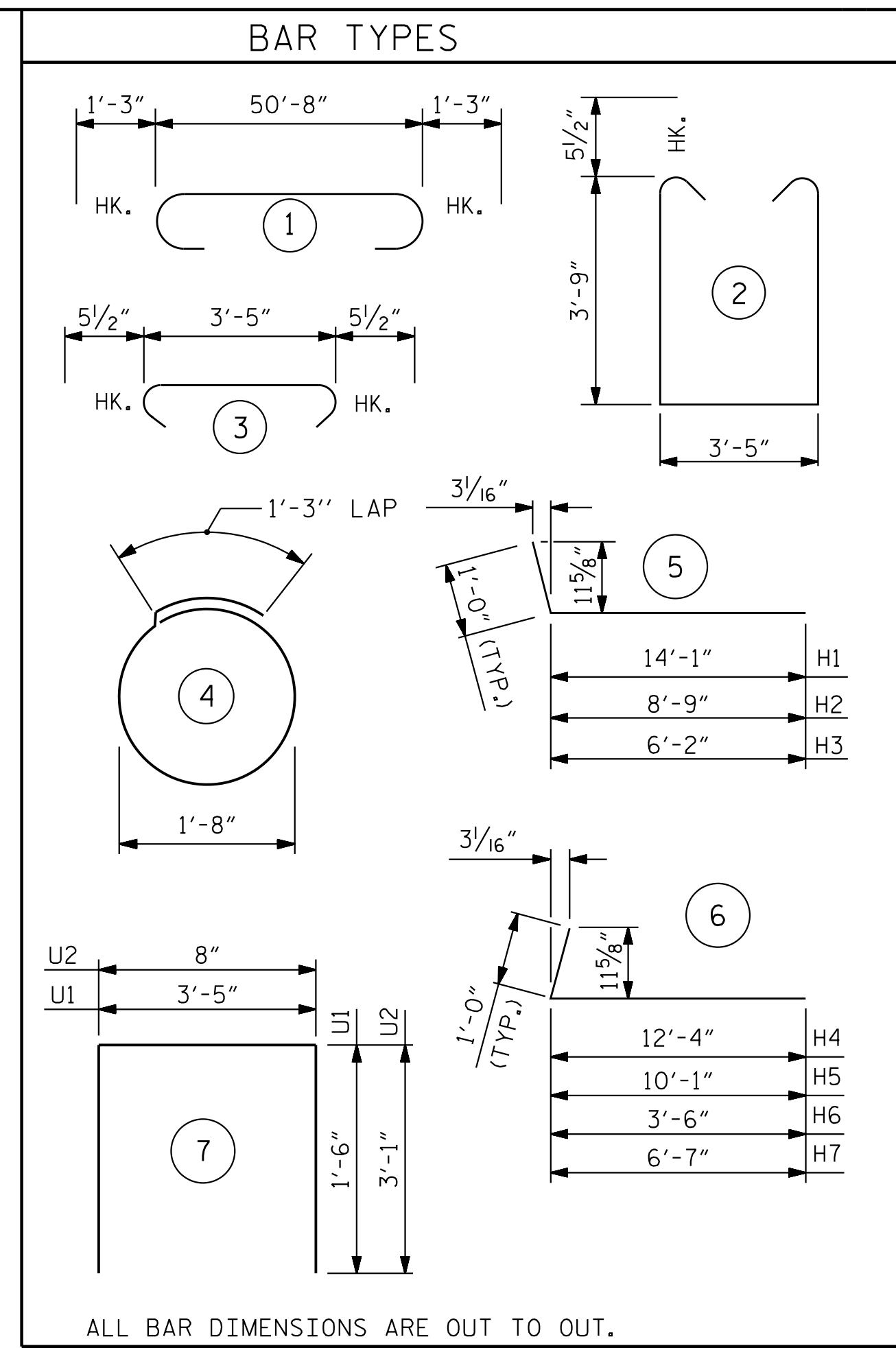
SECTION A-A



SECTION B-B



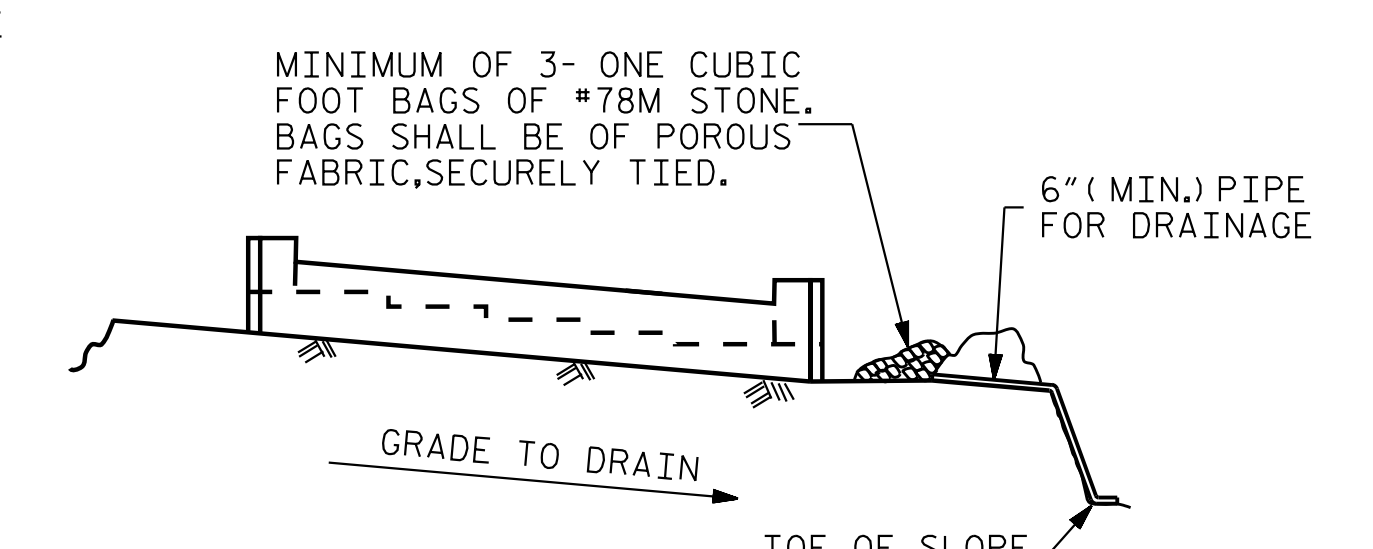
PILE SPLICE DETAILS



ALL BAR DIMENSIONS ARE OUT TO OUT.

BILL OF MATERIAL					
END BENT 1					
BAR NO.	NO.	SIZE	TYPE	LENGTH	WEIGHT
B1	12	#9	1	53'-2"	2,169
B2	6	#4	STR	21'-8"	87
B3	6	#4	STR	7'-5"	30
B4	20	#4	STR	26'-7"	355
B5	13	#4	STR	3'-5"	30
H1	40	#6	5	15'-1"	906
H2	2	#6	5	9'-9"	29
H3	9	#6	5	7'-2"	97
H4	38	#6	6	13'-4"	761
H5	2	#6	6	11'-1"	33
H6	2	#6	6	4'-6"	14
H7	8	#6	6	7'-7"	91
K1	8	#4	STR	3'-8"	20
K2	24	#4	STR	26'-9"	429
S1	77	#5	2	11'-10"	950
S2	68	#5	3	4'-4"	307
S3	36	#4	4	6'-6"	156
U1	25	#4	7	6'-5"	107
U2	50	#4	7	6'-10"	228
V1	3	#5	STR	4'-4"	14
V2	2	#5	STR	10'-5"	22
V3	14	#5	STR	9'-11"	145
V4	14	#5	STR	9'-5"	138
V5	3	#5	STR	3'-8"	11
V6	2	#5	STR	9'-10"	21
V7	6	#5	STR	9'-8"	60
V8	6	#5	STR	9'-6"	59
V9	6	#5	STR	9'-4"	58
V10	6	#5	STR	9'-2"	57
V11	6	#5	STR	8'-11"	56
V12	86	#5	STR	8'-2"	733
V13	8	#5	STR	10'-3"	64
V14	6	#5	STR	9'-7"	60

REINFORCING STEEL	8,297 LBS.
CLASS A CONCRETE BREAKDOWN:	
POUR #1: CAP, COLLARS, ETC.	37.8 C.Y.
POUR #2: BACKWALL	14.2 C.Y.
<b>CLASS A CONCRETE TOTAL</b>	<b>52.0 C.Y.</b>

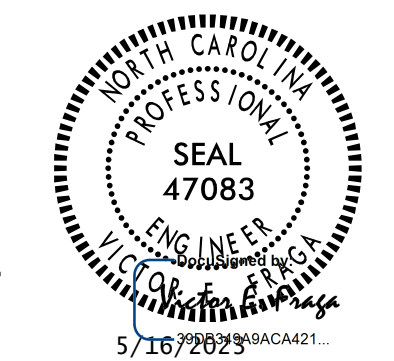


BAGGED STONE AND PIPE SHALL BE PLACED IMMEDIATELY AFTER COMPLETION OF END BENT EXCAVATION. PIPE MAY BE EITHER CONCRETE, CORRUGATED STEEL, CORRUGATED ALUMINUM ALLOY, OR CORRUGATED PLASTIC. PERFORATED PIPE WILL NOT BE ALLOWED.

BAGGED STONE SHALL REMAIN IN PLACE UNTIL THE ENGINEER DIRECTS THAT IT BE REMOVED. THE CONTRACTOR SHALL REMOVE AND DISPOSE OF SILT ACCUMULATIONS AT BAGGED STONE WHEN SO DIRECTED BY THE ENGINEER. BAGS SHALL BE REMOVED AND REPLACED WHENEVER THE ENGINEER DETERMINES THAT THEY HAVE DETERIORATED AND LOST THEIR EFFECTIVENESS.

NO SEPARATE PAYMENT WILL BE MADE FOR THIS WORK AND THE ENTIRE COST OF THIS WORK SHALL BE INCLUDED IN THE UNIT CONTRACT PRICE BID FOR THE SEVERAL PAY ITEMS.

**TEMPORARY DRAINAGE AT END BENT**



PROJECT NO. R-2707D  
CLEVELAND COUNTY  
 STATION: 23+21.80 -Y3-

SHEET 3 OF 3

STATE OF NORTH CAROLINA  
 DEPARTMENT OF TRANSPORTATION  
 RALEIGH  
 SUBSTRUCTURE

**END BENT 1  
 DETAILS**

REVISIONS						SHEET NO.	
NO.	BY:	DATE:	NO.	BY:	DATE:	S3-27	
1			3			TOTAL SHEETS	36
2			4				

Stantec Consulting Services Inc.  
 801 Jones Franklin Road  
 Suite 300  
 Raleigh, NC 27606  
 Tel. (919) 851-6866  
 Fax. (919) 851-7024  
 www.stantec.com  
 License No. F-0672

DRAWN BY: J. B. GEILE DATE: 04/06/18  
 CHECKED BY: V. E. FRAGA DATE: 05/05/23  
 DESIGN ENGINEER OF RECORD: V. E. FRAGA DATE: 05/16/23

DOCUMENT NOT CONSIDERED FINAL UNLESS ALL SIGNATURES COMPLETED