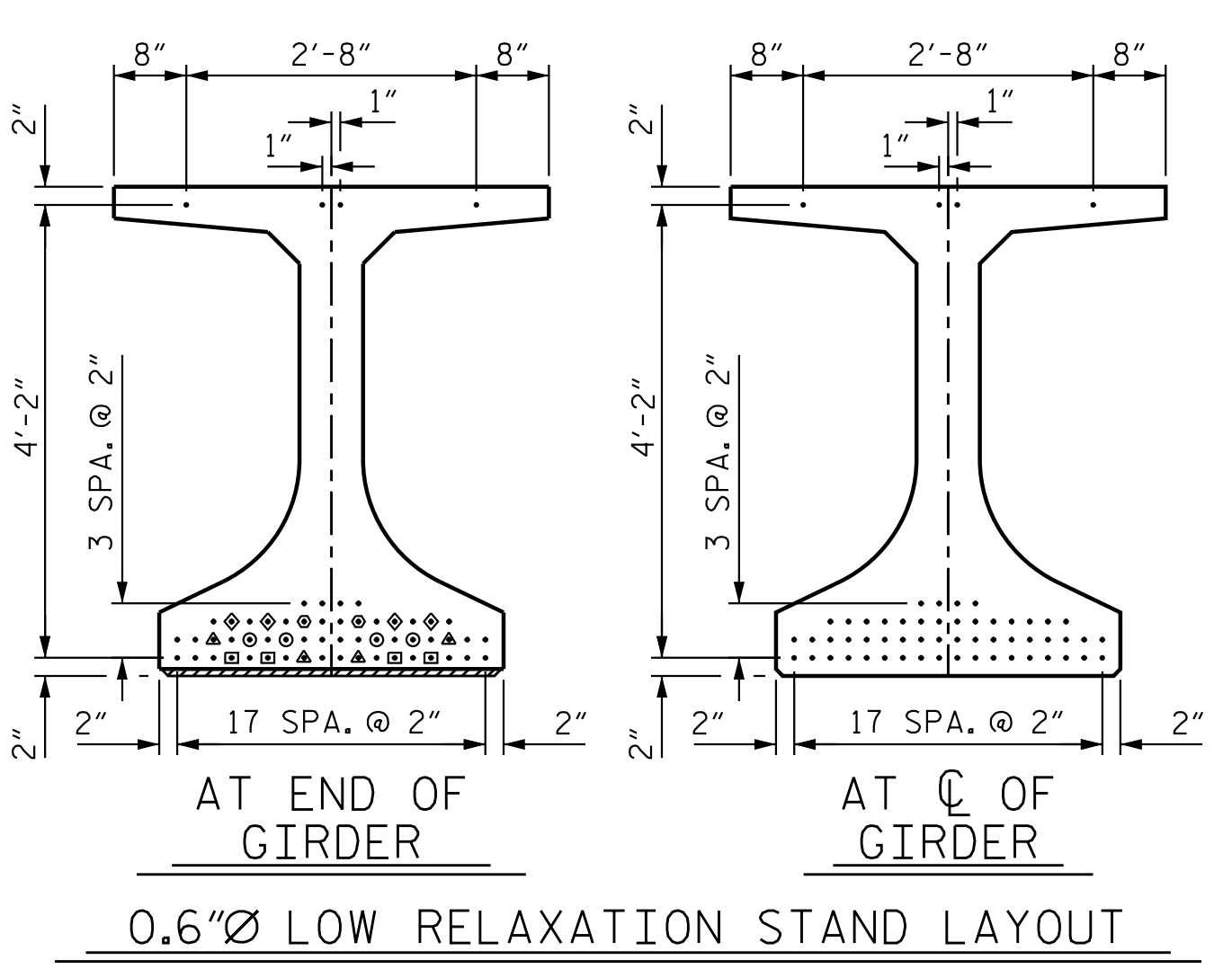


*** NOTE:**
 S11 BARS SHALL BE BENT BEFORE SHIPMENT. HEAT BENDING SHALL NOT BE ALLOWED.

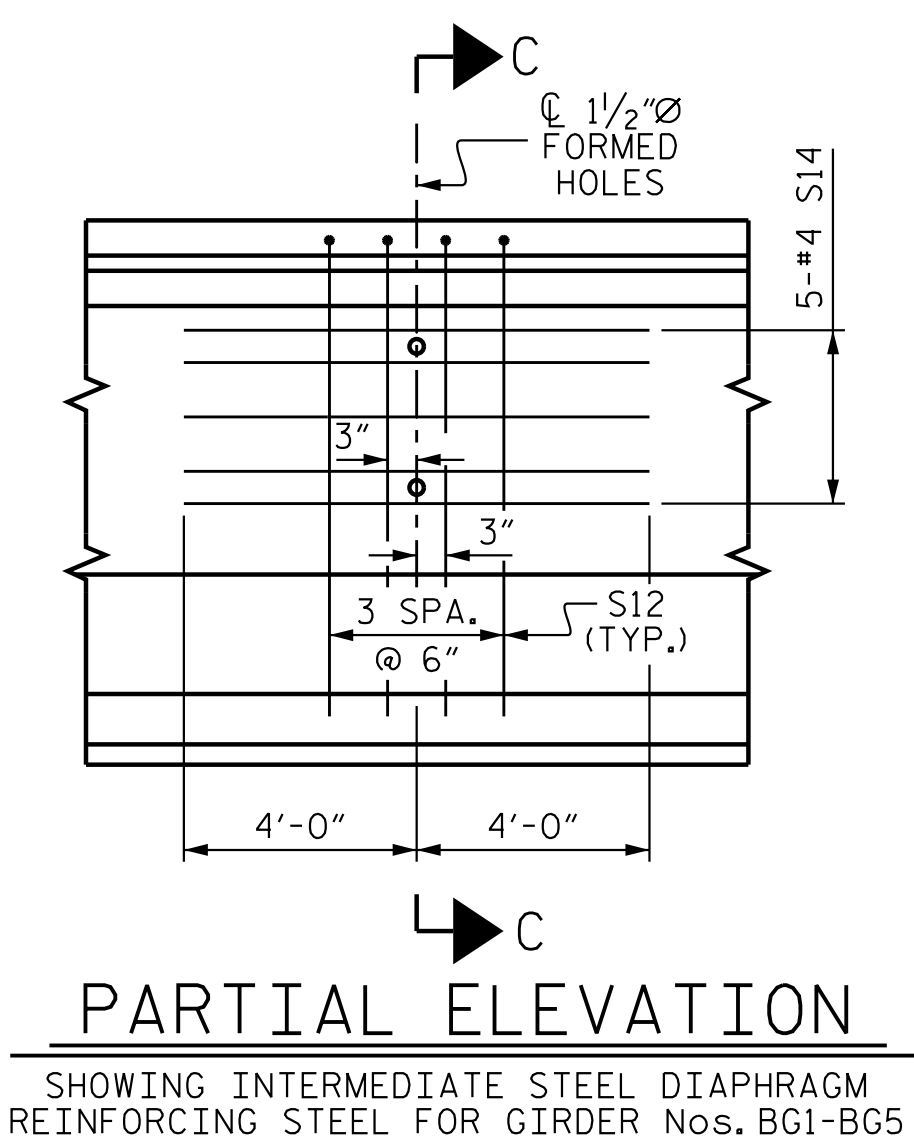
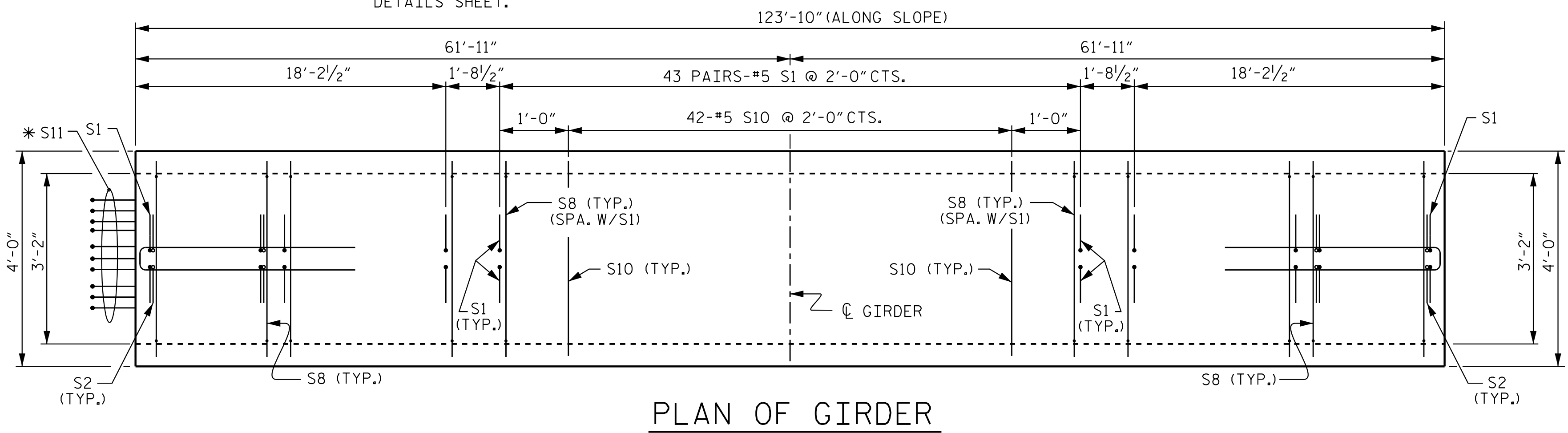
1/2" Ø FORMED HOLE. (SEE FRAMING PLAN FOR LOCATION)

DEBONDING LEGEND

- FULLY BONDED STRANDS
- STRANDS DEBONDED FOR 3'-0" FROM END OF GIRDER
- ▲ STRANDS DEBONDED FOR 6'-0" FROM END OF GIRDER
- STRANDS DEBONDED FOR 9'-0" FROM END OF GIRDER
- ◆ STRANDS DEBONDED FOR 12'-0" FROM END OF GIRDER
- ⊙ STRANDS DEBONDED FOR 15'-0" FROM END OF GIRDER

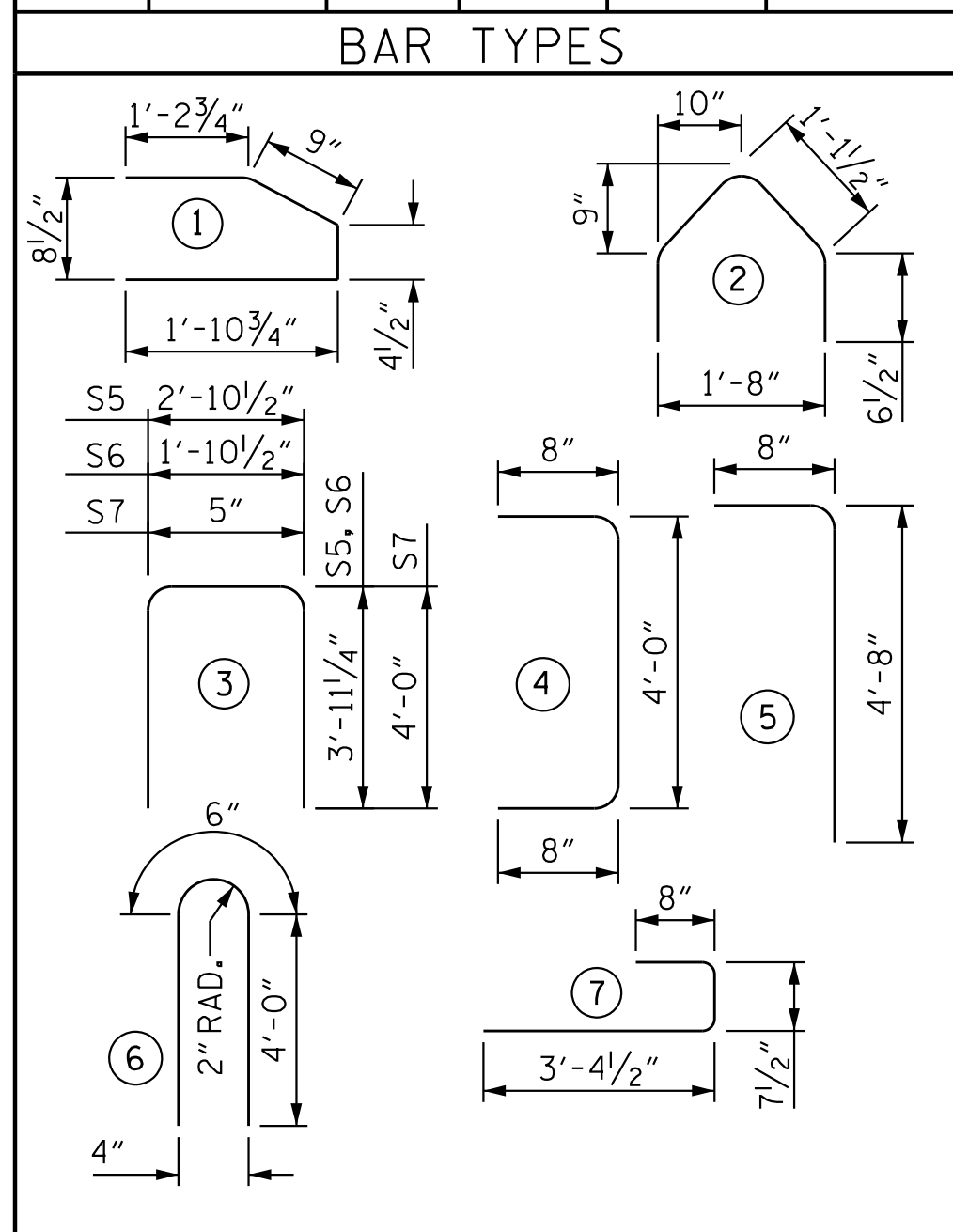


* FOR S11 BARS, SEE DETAIL "C" OF PRESTRESSED CONCRETE GIRDER CONTINUOUS FOR LIVE LOAD DETAILS SHEET.



0.6"Ø L. R. GRADE 270 STRANDS		
AREA (SQUARE INCHES)	ULTIMATE STRENGTH (LBS. PER STRAND)	APPLIED PRESTRESS (LBS. PER STRAND)
0.217	58,600	43,950

REINFORCING STEEL FOR ONE GDR					
BAR	NUMBER	SIZE	TYPE	LENGTH	WEIGHT
S1	238	#5	5	5'-4"	1,324
S2	28	#5	4	5'-4"	156
S3	76	#3	2	3'-4"	95
S4	152	#3	1	4'-3"	243
S5	1	#5	3	10'-9"	11
S6	2	#5	3	9'-9"	20
S7	8	#4	3	8'-5"	45
S8	238	#5	7	4'-8"	1,158
S10	42	#5	STR	3'-8"	161
* S11	10	#6	STR	4'-8"	70
S12	8	#5	6	8'-6"	71
S13	1	#3	STR	2'-10"	1
S14	10	#4	STR	8'-0"	53



ALL BAR DIMENSIONS ARE OUT-TO-OUT

QUANTITIES FOR ONE GIRDER		
REINFORCING STEEL	10,000 PSI CONCRETE	0.6"Ø L.R. STRANDS
LB.	AVERAGE C.Y.	No.
3,408	29.7	58

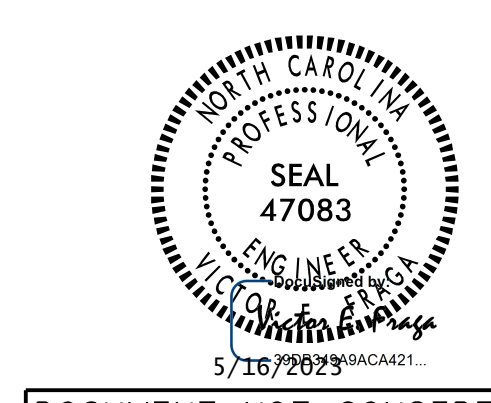
GIRDERS REQUIRED		
NUMBER	LENGTH	TOTAL LENGTH
5	123'-10"	619.2

PROJECT NO. R-2707D
CLEVELAND COUNTY
 STATION: 23+21.80 -Y3-

SHEET 2 OF 4

STATE OF NORTH CAROLINA
 DEPARTMENT OF TRANSPORTATION
 RALEIGH
 SUPERSTRUCTURE
 54" PRESTRESSED CONCRETE
 FLORIDA I-BEAM GIRDER
 CONTINUOUS FOR LIVE LOAD
 (SPAN B)

REVISIONS						SHEET NO. S3-16
NO.	BY:	DATE:	NO.	BY:	DATE:	
1			3			TOTAL SHEETS 36
2			4			



DOCUMENT NOT CONSIDERED FINAL UNLESS ALL SIGNATURES COMPLETED

Stantec Consulting Services Inc.
 801 Jones Franklin Road
 Suite 300
 Raleigh, NC 27606
 Tel. (919) 851-6866
 Fax. (919) 851-7024
 www.stantec.com
 License No. F-0672

DRAWN BY: J. B. GEILE DATE: 03/20/18
 CHECKED BY: V. E. FRAGA DATE: 05/05/23
 DESIGN ENGINEER OF RECORD: V. E. FRAGA DATE: 05/16/23

5/16/2023 11:35:03 AM jHogenbush
 c:\pvt\work\king\dms55403\2707D_SMLL02_220490.dgn