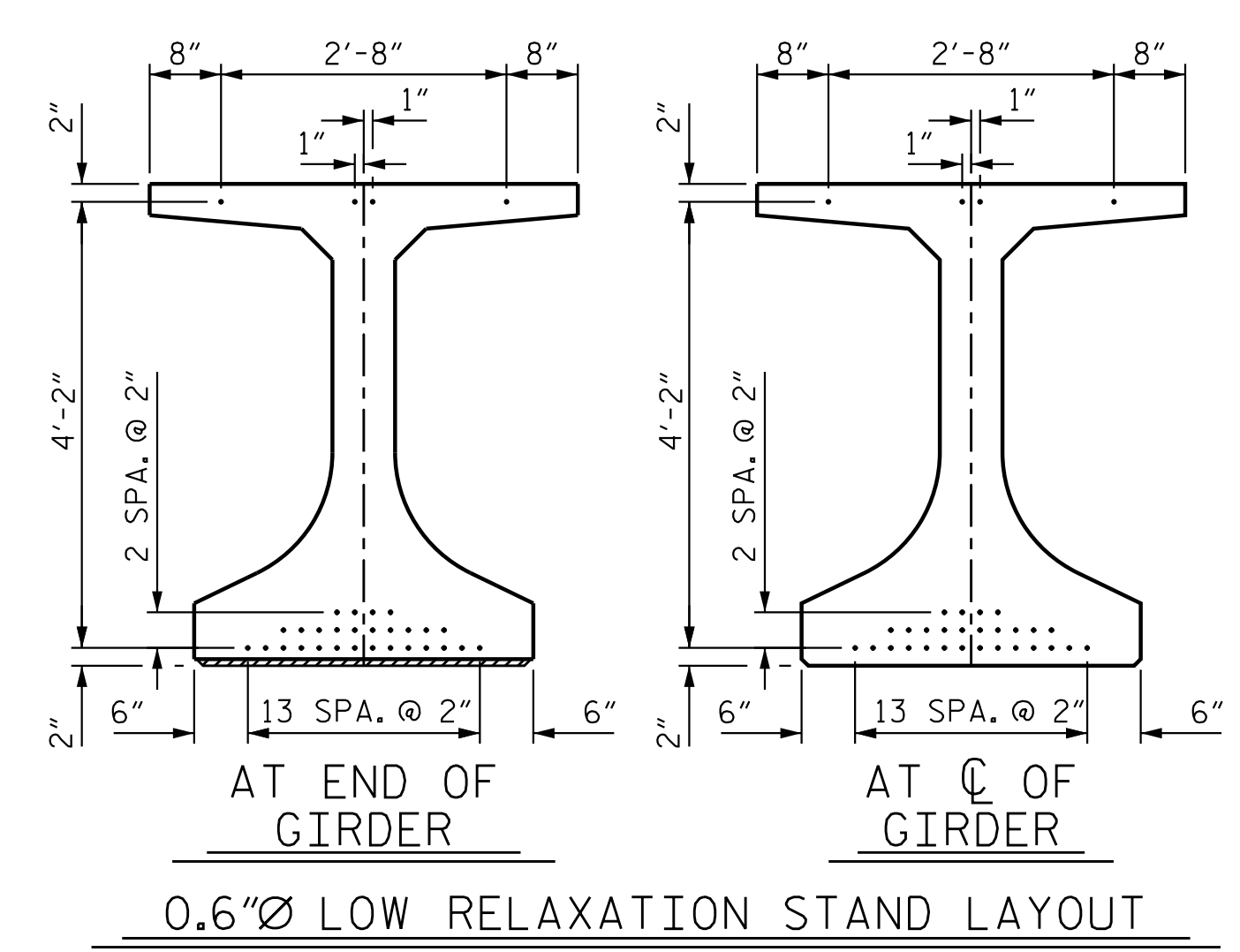


**\* NOTE:**  
S11 BARS SHALL BE BENT BEFORE SHIPMENT. HEAT BENDING SHALL NOT BE ALLOWED.

1/2" Ø FORMED HOLE. (SEE FRAMING PLAN FOR LOCATION)

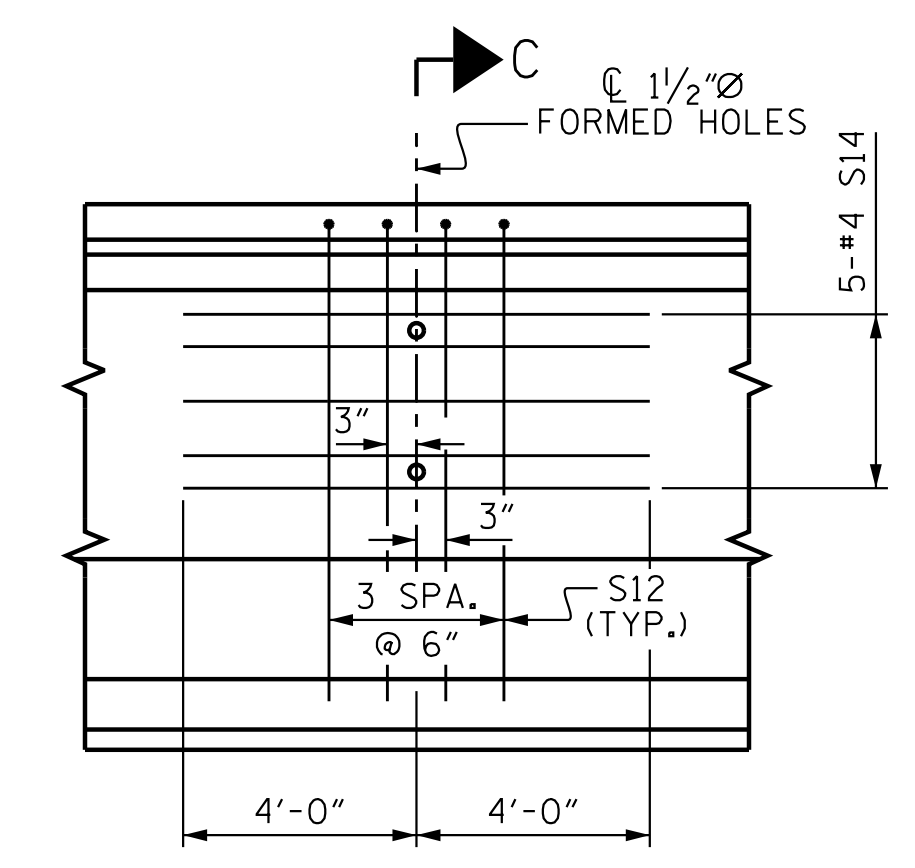
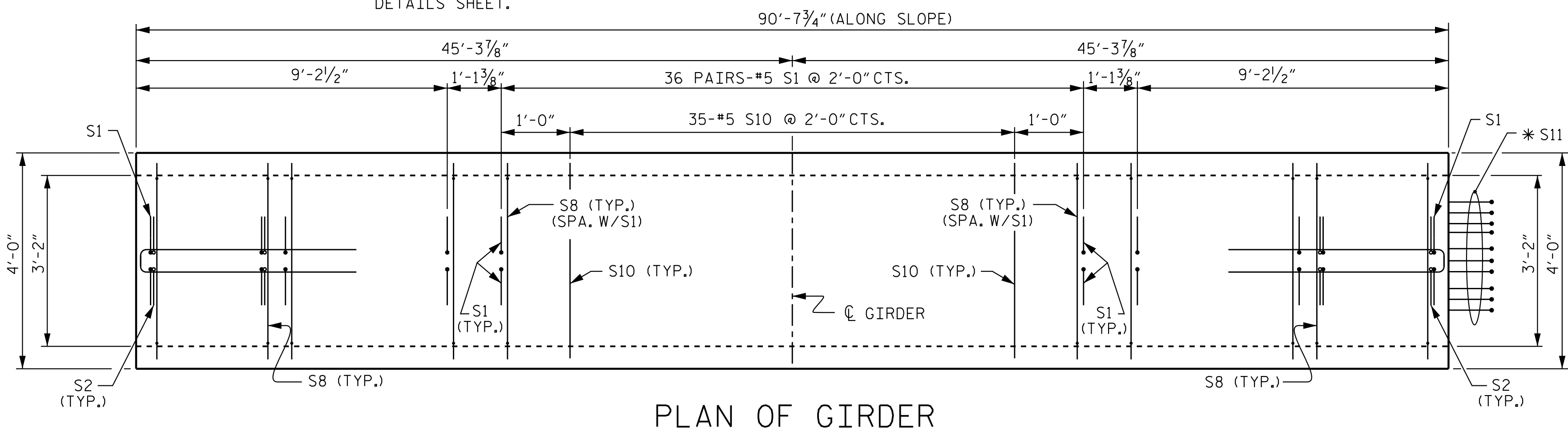


0.6"Ø L. R. GRADE 270 STRANDS		
AREA (SQUARE INCHES)	ULTIMATE STRENGTH (LBS. PER STRAND)	APPLIED PRESTRESS (LBS. PER STRAND)
0.217	58,600	43,950

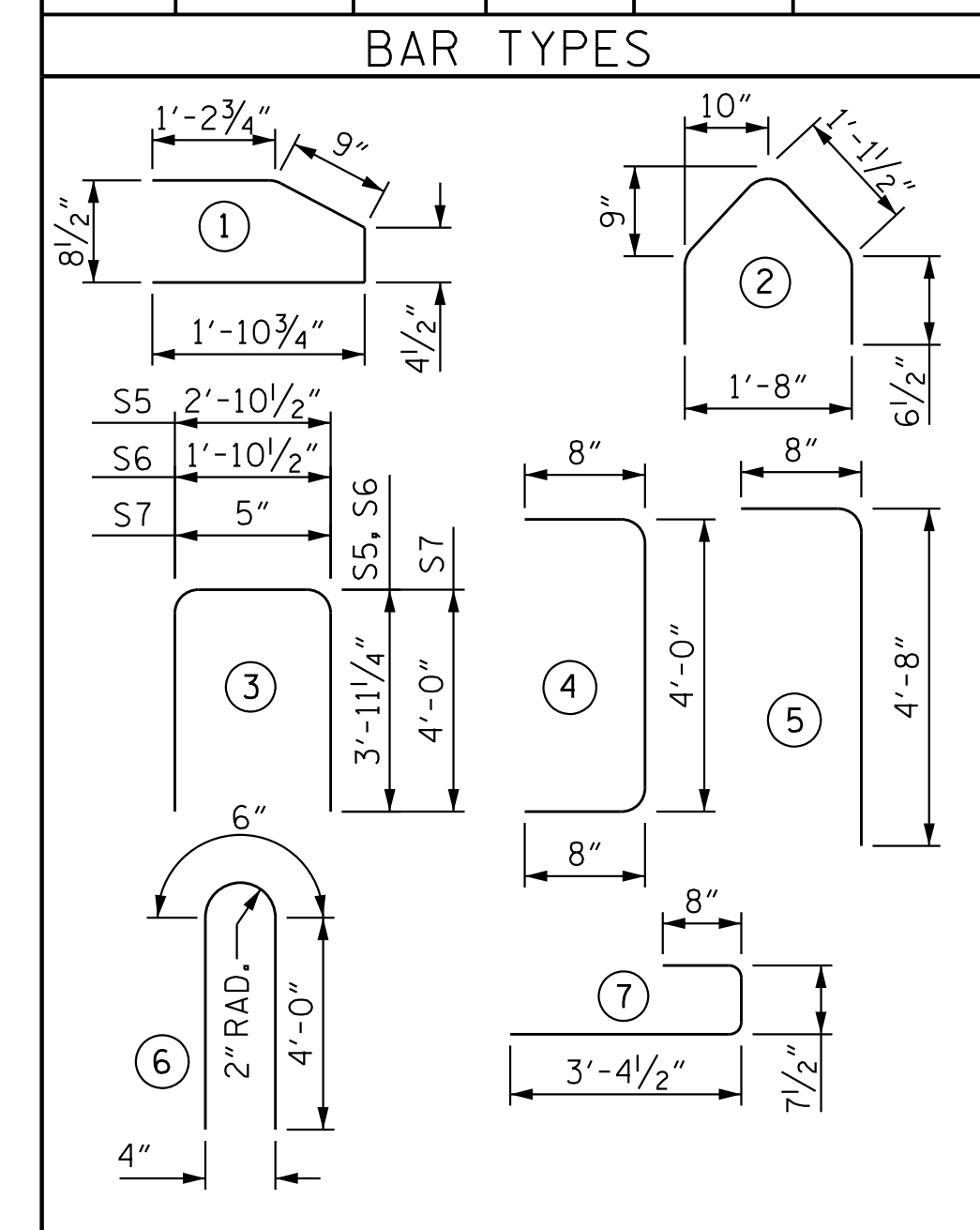
  

REINFORCING STEEL FOR ONE GDR					
BAR	NUMBER	SIZE	TYPE	LENGTH	WEIGHT
S1	152	#5	5	5'-4"	846
S2	28	#5	4	5'-4"	156
S3	40	#3	2	3'-4"	50
S4	80	#3	1	4'-3"	128
S5	1	#5	3	10'-9"	11
S6	2	#5	3	9'-9"	20
S7	8	#4	3	8'-5"	45
S8	152	#5	7	4'-8"	740
S10	35	#5	STR	3'-8"	134
*S11	10	#6	STR	4'-8"	70
S12	4	#5	6	8'-6"	35
S13	1	#3	STR	2'-10"	1
S14	5	#4	STR	8'-0"	27

\* FOR S11 BARS, SEE DETAIL "C" OF PRESTRESSED CONCRETE GIRDER CONTINUOUS FOR LIVE LOAD DETAILS SHEET.



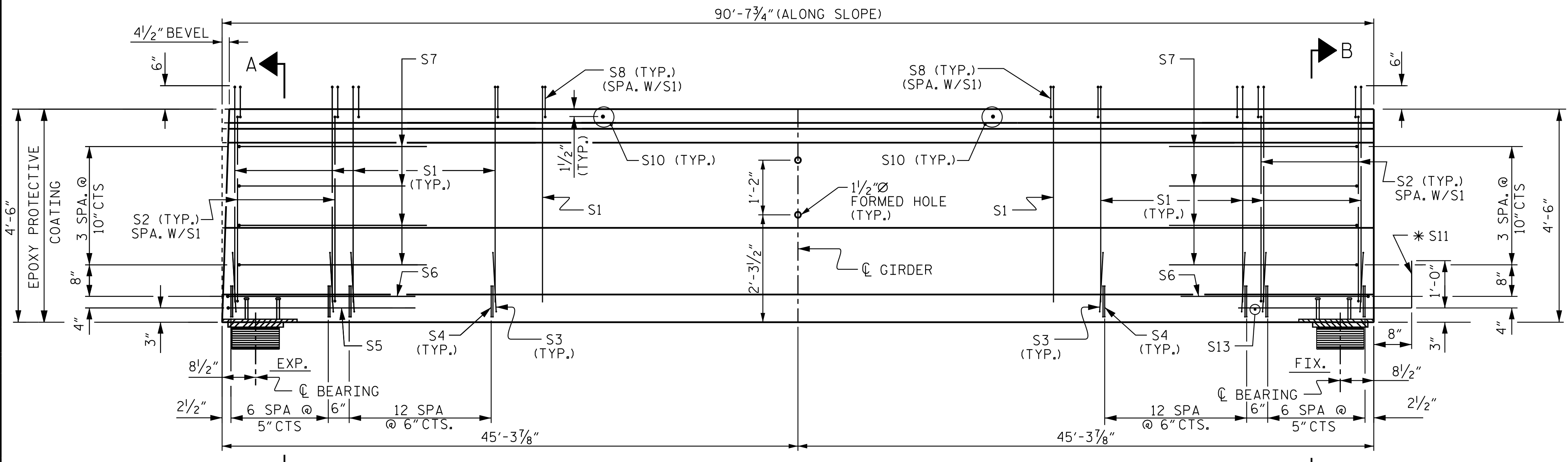
**PARTIAL ELEVATION**  
SHOWING INTERMEDIATE STEEL DIAPHRAGM REINFORCING STEEL FOR GIRDER Nos. AG1-AG5



ALL BAR DIMENSIONS ARE OUT-TO-OUT

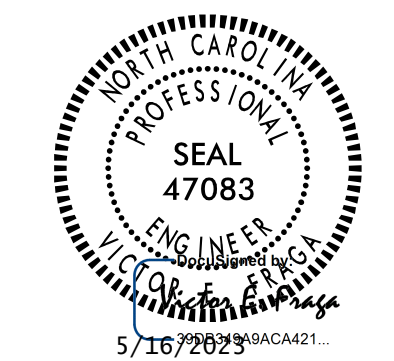
QUANTITIES FOR ONE GIRDER		
REINFORCING STEEL	5,500 PSI CONCRETE	0.6"Ø L.R. STRANDS
LB.	AVERAGE C.Y.	No.
2,263	21.8	32

GIRDERS REQUIRED		
NUMBER	LENGTH	TOTAL LENGTH
5	90'-7 3/4"	453.2



**ELEVATION OF GIRDER**  
NOTE: LEAN STIRRUPS AS NECESSARY TO CLEAR BEVEL

Stantec Consulting Services Inc.  
801 Jones Franklin Road  
Suite 300  
Raleigh, NC 27606  
Tel. (919) 851-6866  
Fax. (919) 851-7024  
www.stantec.com  
License No. F-0672



DRAWN BY: J. B. GEILE DATE: 03/20/18  
CHECKED BY: V. E. FRAGA DATE: 05/05/23  
DESIGN ENGINEER OF RECORD: V. E. FRAGA DATE: 05/16/23

DOCUMENT NOT CONSIDERED FINAL UNLESS ALL SIGNATURES COMPLETED

PROJECT NO. R-2707D  
CLEVELAND COUNTY  
STATION: 23+21.80 -Y3-

SHEET 1 OF 4

STATE OF NORTH CAROLINA  
DEPARTMENT OF TRANSPORTATION  
RALEIGH  
SUPERSTRUCTURE  
54" PRESTRESSED CONCRETE FLORIDA I-BEAM GIRDER CONTINUOUS FOR LIVE LOAD  
(SPAN A)

REVISIONS					
NO.	BY:	DATE:	NO.	BY:	DATE:
1			3		
2			4		

SHEET NO.	
S3-15	TOTAL SHEETS 36