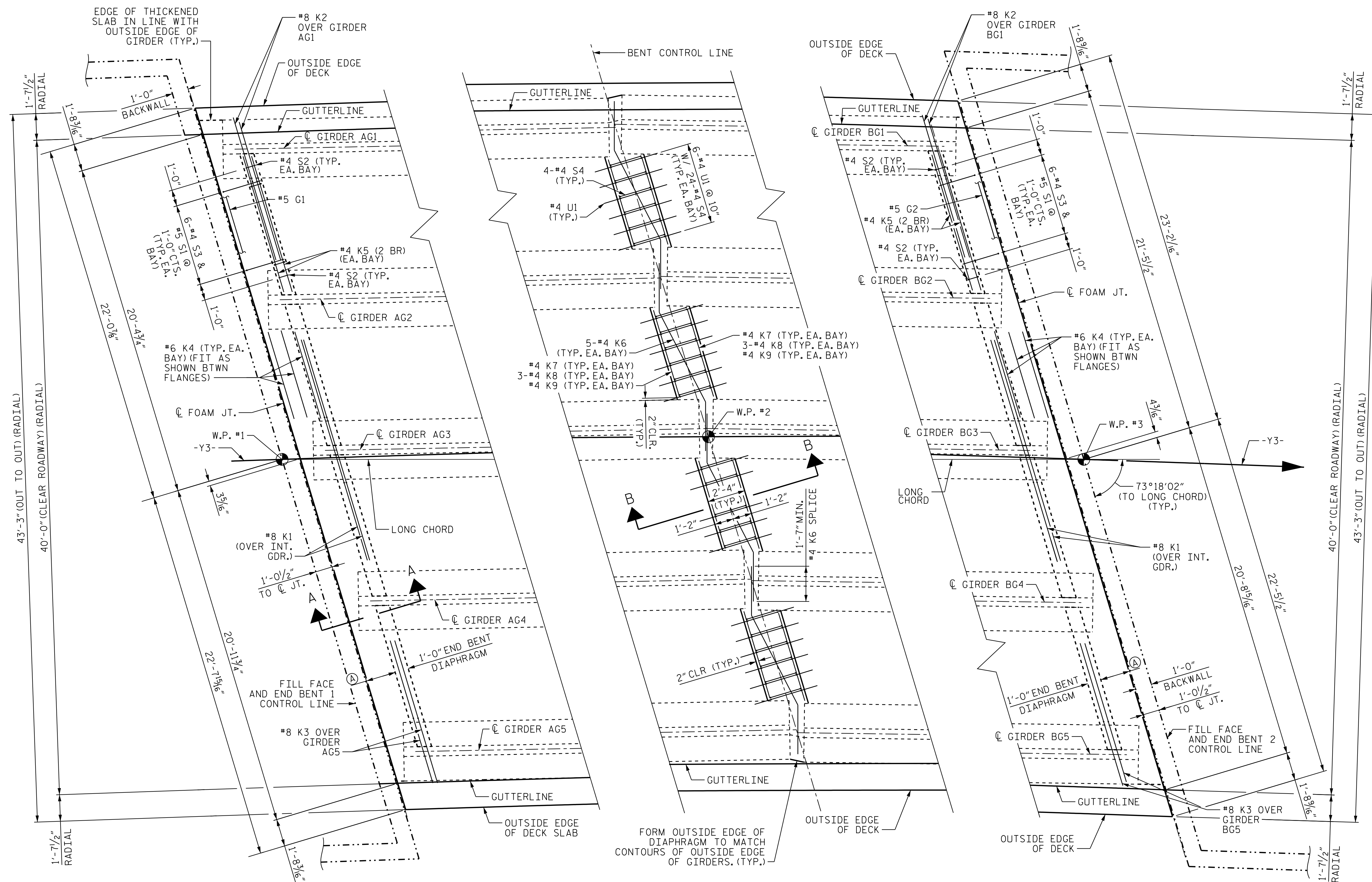


5/16/2023 11:34:31 AM jHogenbush



**END BENT 1
DIAPHRAGM REINFORCING
DETAIL**

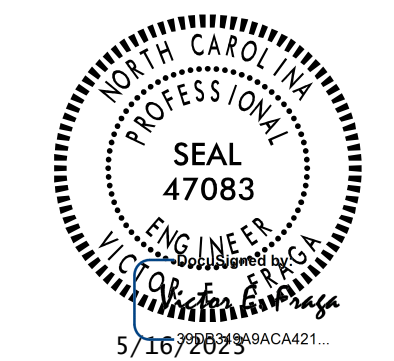
**INTERIOR BENT 1
DIAPHRAGM REINFORCING
DETAIL**

**END BENT 2
DIAPHRAGM REINFORCING
DETAIL**

NOTES
 REINFORCEMENT IN DECK AND BARRIER RAIL NOT SHOWN FOR CLARITY.
 FOR SECTION A-A, SEE SUPERSTRUCTURE "TYPICAL SECTION (DETAILS)", SHEET 3 OF 3.
 (2 BR) DENOTES TWO BAR RUN
 (A) - 1'-10" FROM ϕ JOINT TO FACE OF DIAPHRAGM.
 SHIFT "U" AND "S" BARS AS NECESSARY TO PROVIDE 2" CLEARANCE TO TOP FLANGE.

PROJECT NO. R-2707D
CLEVELAND COUNTY
 STATION: 23+21.80 -Y3-

SHEET 3 OF 3
 STATE OF NORTH CAROLINA
 DEPARTMENT OF TRANSPORTATION
 RALEIGH
 SUPERSTRUCTURE
 PLAN OF SPANS
 DETAILS - DIAPHRAGMS



Stantec
 Stantec Consulting Services Inc.
 801 Jones Franklin Road
 Suite 300
 Raleigh, NC 27606
 Tel. (919) 851-6866
 Fax. (919) 851-7024
 www.stantec.com
 License No. F-0672

DRAWN BY: J. B. GEILE DATE: 06/08/18
 CHECKED BY: V. E. FRAGA DATE: 06/18/18
 DESIGN ENGINEER OF RECORD: V. E. FRAGA DATE: 05/16/23

DOCUMENT NOT CONSIDERED FINAL UNLESS ALL SIGNATURES COMPLETED

REVISIONS						SHEET NO. S3-12
NO.	BY:	DATE:	NO.	BY:	DATE:	
1			3			TOTAL SHEETS 36
2			4			