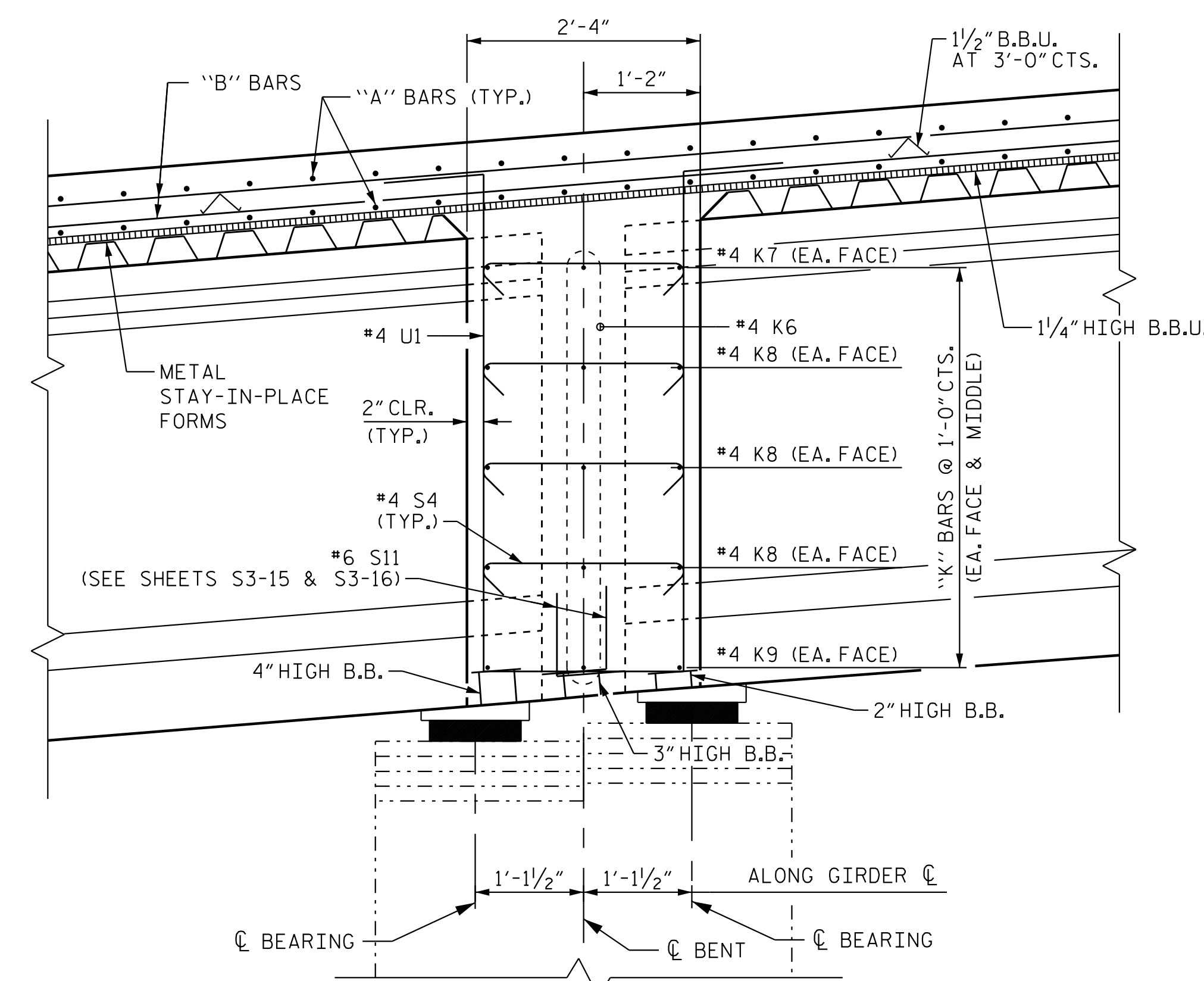


Ⓐ : 1'-2" @ END BENT 1; 1'-3 1/2" @ END BENT 2  
 Ⓑ : 1'-10" @ END BENT 1; 1'-10" @ END BENT 2

**SECTION A-A**

SECTION THROUGH END BENT DIAPHRAGM 1 SHOWN.  
 SECTION THROUGH END BENT DIAPHRAGM 2 SIMILAR.



**SECTION B-B**

SECTION THROUGH INTERIOR BENT DIAPHRAGM

**NOTES**

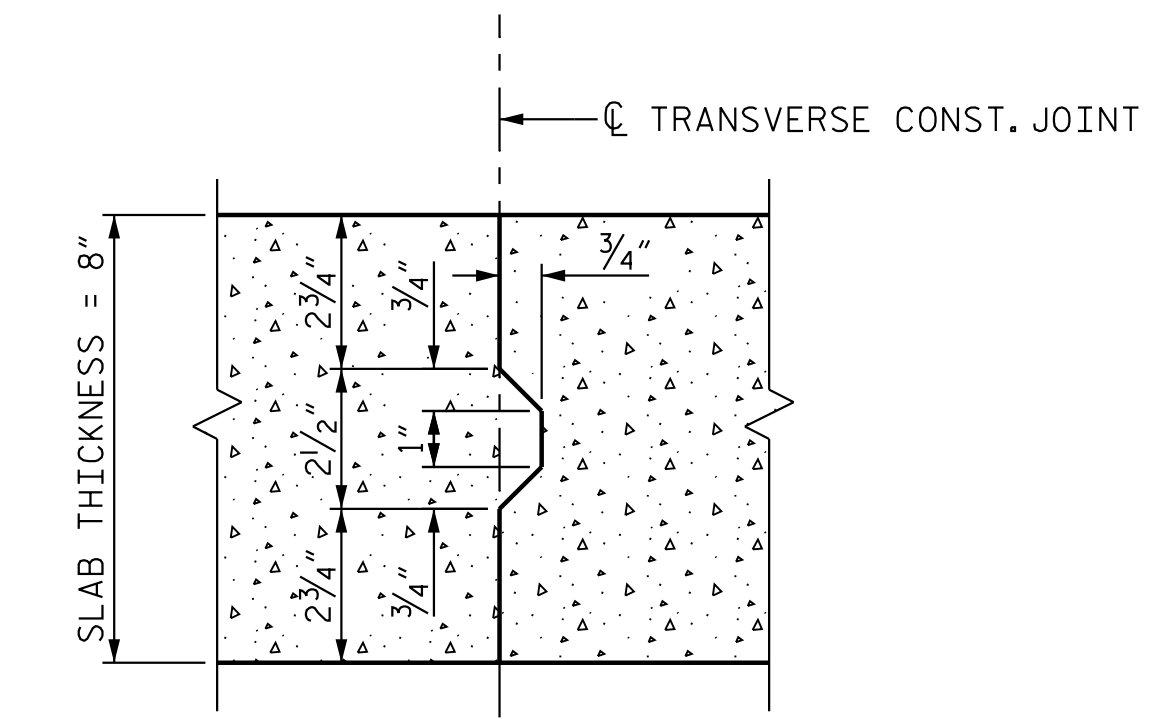
PROVIDE 1/4" HIGH BEAM BOLSTERS UPPER AT 4'-0" CTS. ATOP THE METAL STAY-IN-PLACE FORMS TO SUPPORT THE BOTTOM MAT OF "A" BARS. WHEN USING REMOVABLE FORMS, PROVIDE CONTINUOUS HIGH CHAIRS FOR METAL DECK (C.H.C.M.) @ 4'-0" CTS. WITH A HEIGHT TO SUPPORT THE BOTTOM MAT OF "A" BARS A CLEAR DISTANCE OF 2 1/2" ABOVE THE TOP OF THE REMOVABLE FORM.

LONGITUDINAL STEEL MAY BE SHIFTED SLIGHTLY, AS NECESSARY, TO AVOID INTERFERENCE WITH STIRRUPS IN PRESTRESSED CONCRETE GIRDERS.

NO CHAMFER IS REQUIRED ON CORNERS OF GIRDER BUILDUPS.

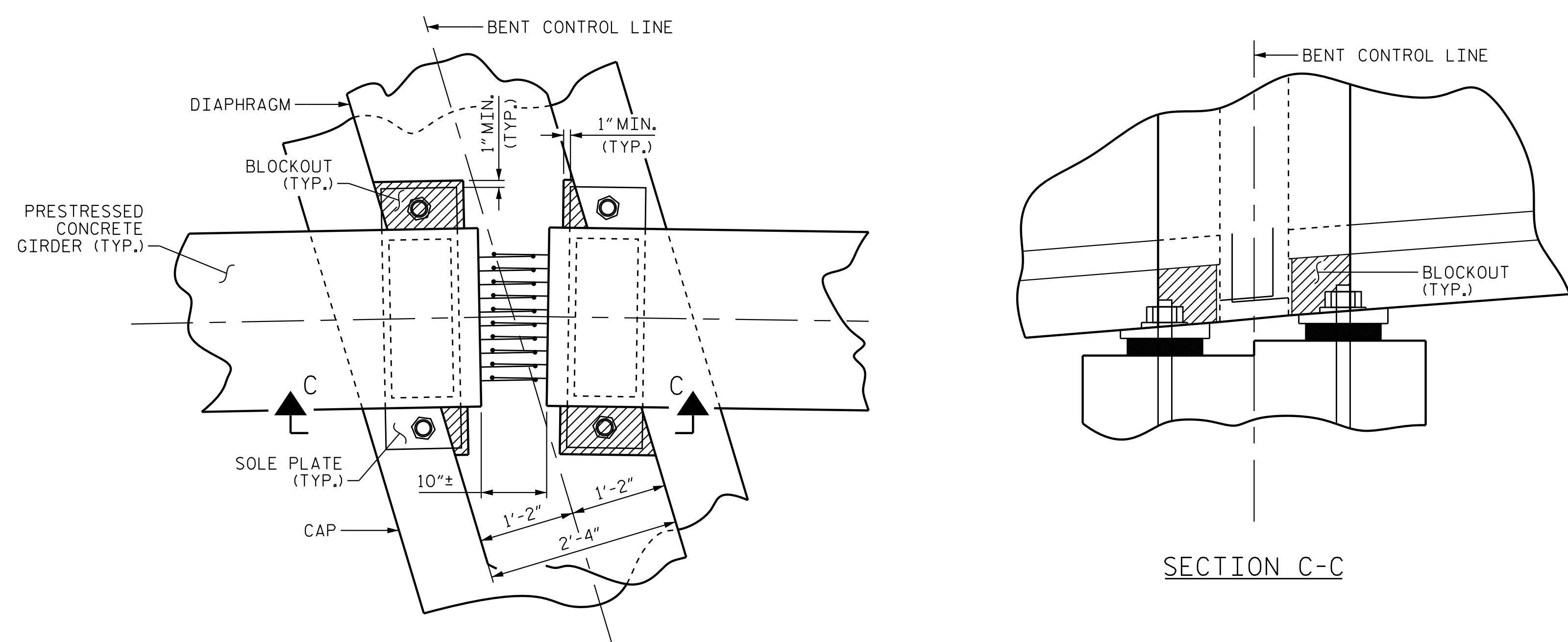
PREVIOUSLY CAST CONCRETE IN A CONTINUOUS UNIT SHALL HAVE ATTAINED A MINIMUM COMPRESSIVE STRENGTH OF 3,000 PSI BEFORE ADDITIONAL CONCRETE IS CAST IN THE UNIT.

#5 G1 BAR MAY BE SHIFTED SLIGHTLY, AS NECESSARY, TO CLEAR REINFORCING STEEL AND STIRRUPS.



**TRANSVERSE CONST. JOINT DETAIL**

REINFORCING STEEL IN SLAB NOT SHOWN.  
 LONGITUDINAL REINFORCING STEEL SHALL BE CONTINUOUS THROUGH JOINT.



**BENT DIAPHRAGM BLOCK-OUT DETAIL**

PROJECT NO. R-2707D  
CLEVELAND COUNTY  
 STATION: 23+21.80 -Y3-

SHEET 3 OF 3

STATE OF NORTH CAROLINA  
 DEPARTMENT OF TRANSPORTATION  
 RALEIGH  
 SUPERSTRUCTURE  
 TYPICAL SECTION  
 (DETAILS)



REVISIONS						SHEET NO. S3-09
NO.	BY:	DATE:	NO.	BY:	DATE:	
1			3			TOTAL SHEETS 36
2			4			

DOCUMENT NOT CONSIDERED FINAL UNLESS ALL SIGNATURES COMPLETED



DRAWN BY : J. E. HAGENBUSH DATE : 04/04/18  
 CHECKED BY : V. E. FRAGA DATE : 05/05/23  
 DESIGN ENGINEER OF RECORD : V. E. FRAGA DATE : 05/16/23

5/16/2023 11:34:03 AM jHagenbush c:\pvt\working\dmis55403\2707D\_SMLL\_TS03\_220490.dgn