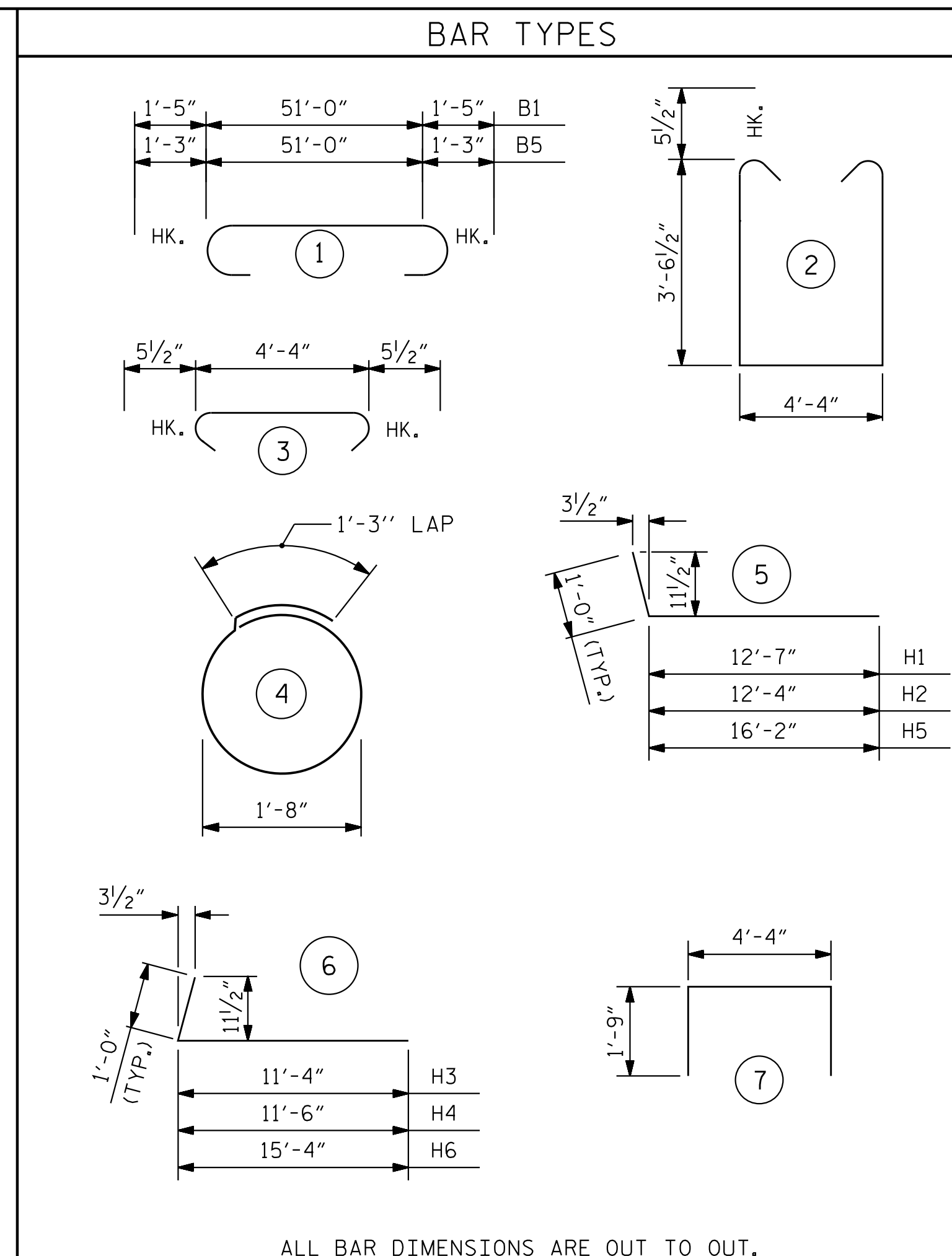
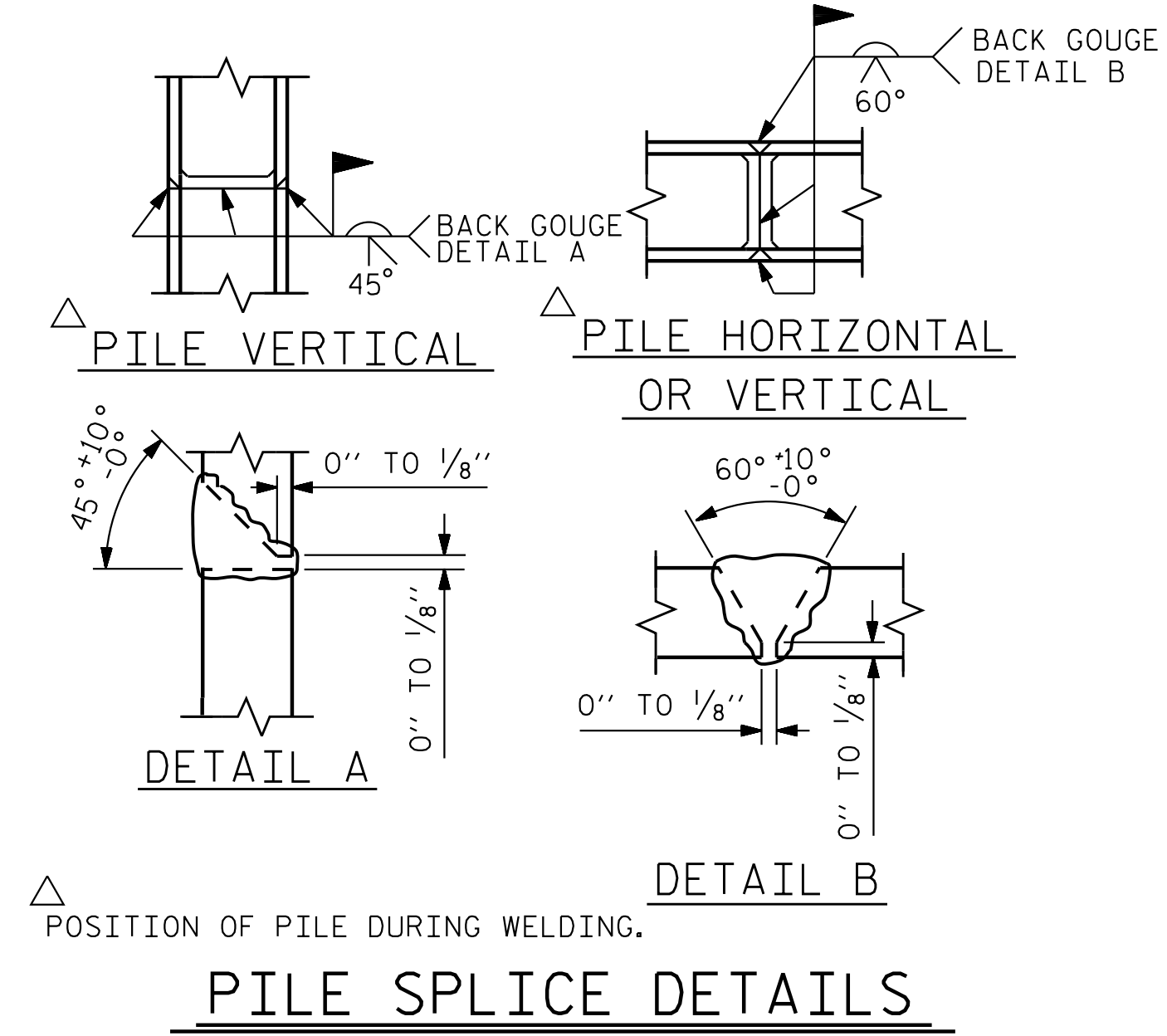


BAGGED STONE AND PIPE SHALL BE PLACED IMMEDIATELY AFTER COMPLETION OF END BENT EXCAVATION. PIPE MAY BE EITHER CONCRETE, CORRUGATED STEEL, CORRUGATED ALUMINUM ALLOY, OR CORRUGATED PLASTIC. PERFORATED PIPE WILL NOT BE ALLOWED.

BAGGED STONE SHALL REMAIN IN PLACE UNTIL THE ENGINEER DIRECTS THAT IT BE REMOVED. THE CONTRACTOR SHALL REMOVE AND DISPOSE OF SILT ACCUMULATIONS AT BAGGED STONE WHEN SO DIRECTED BY THE ENGINEER. BAGS SHALL BE REMOVED AND REPLACED WHENEVER THE ENGINEER DETERMINES THAT THEY HAVE DETERIORATED AND LOST THEIR EFFECTIVENESS.

NO SEPARATE PAYMENT WILL BE MADE FOR THIS WORK AND THE ENTIRE COST OF THIS WORK SHALL BE INCLUDED IN THE UNIT CONTRACT PRICE BID FOR THE SEVERAL PAY ITEMS.

### TEMPORARY DRAINAGE AT END BENT

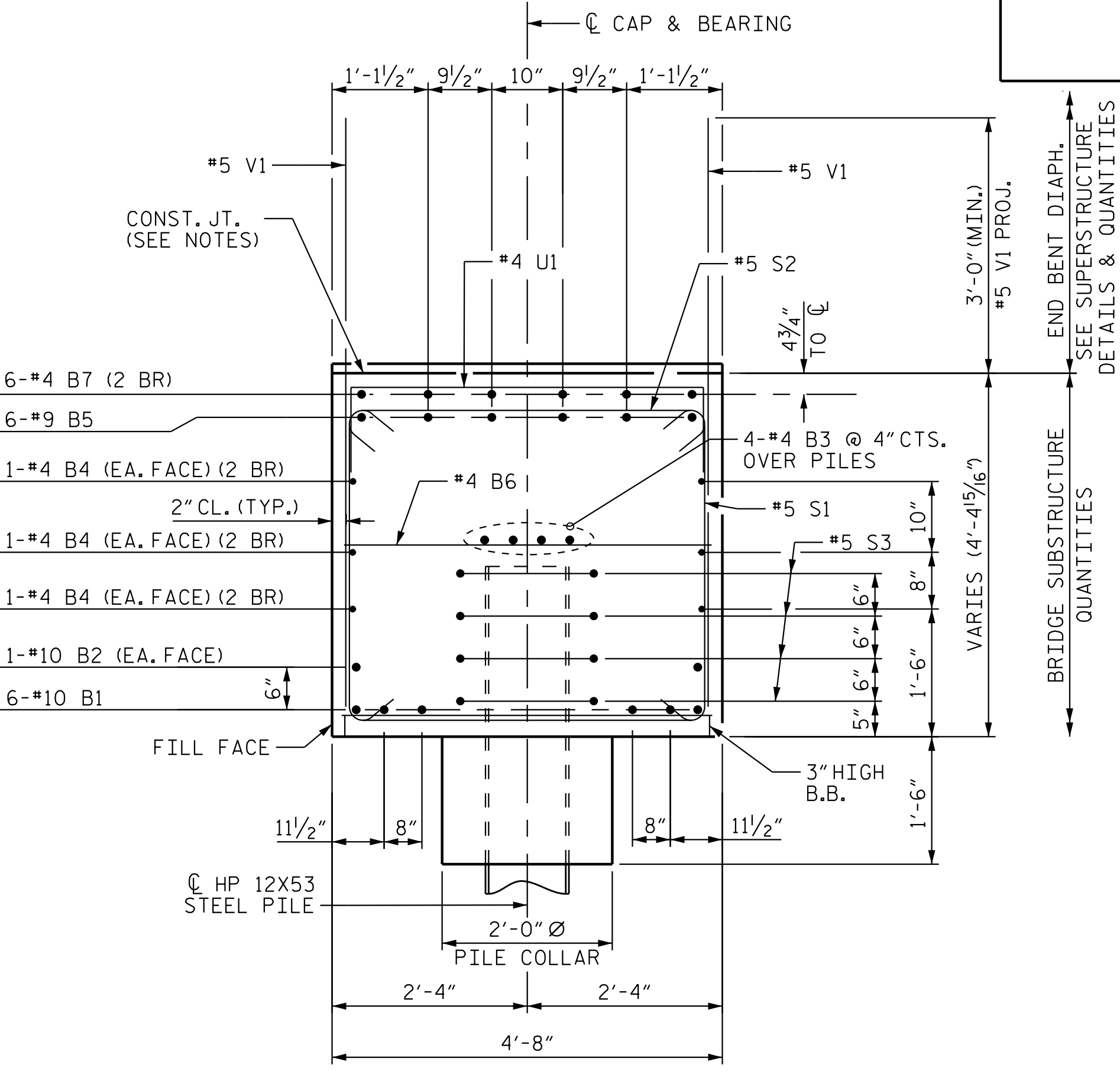
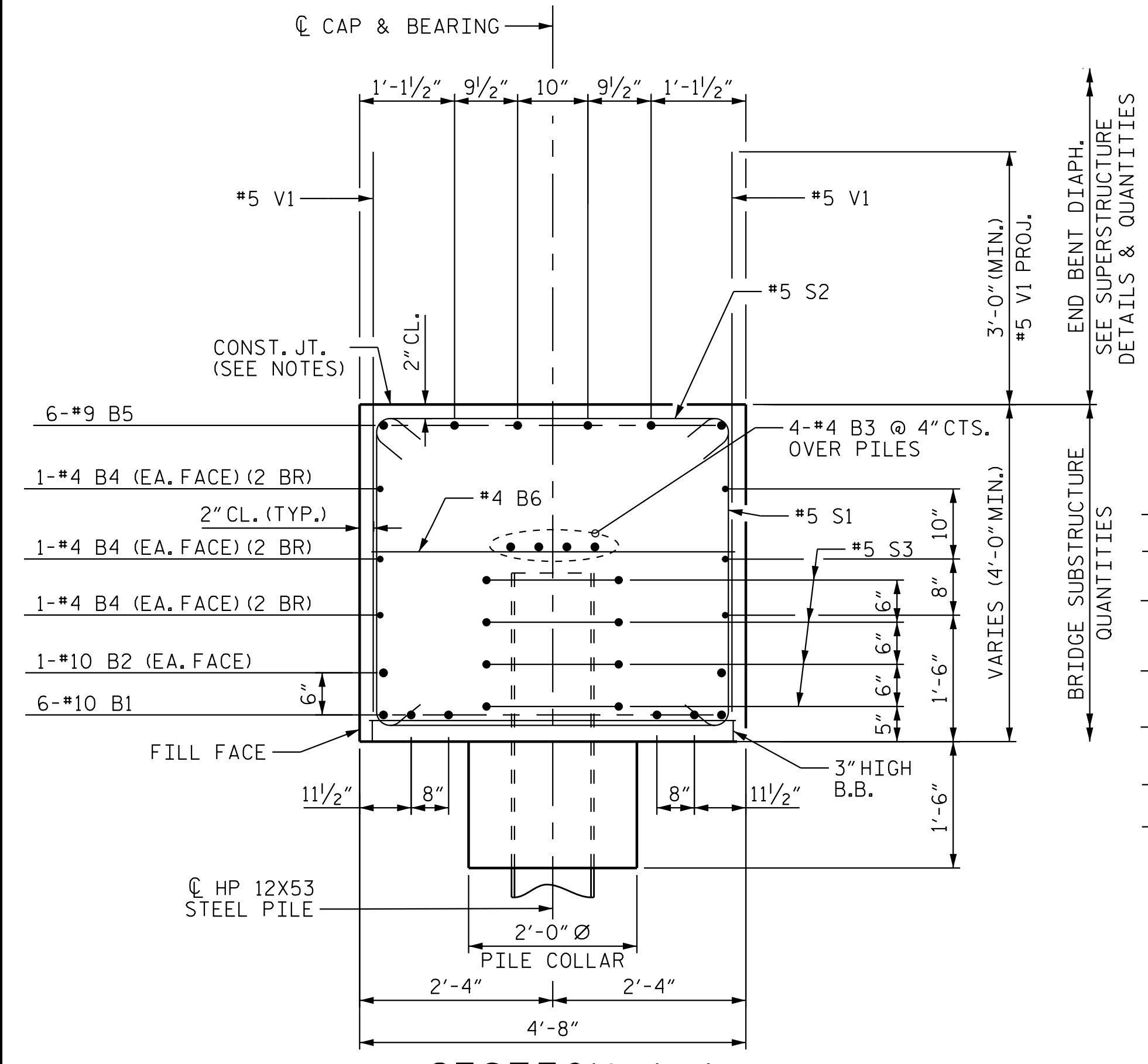


BILL OF MATERIAL					
END BENT 1					
BAR	NO.	SIZE	TYPE	LENGTH	WEIGHT
B1	6	#10	1	53'-10"	1390
B2	2	#10	STR	50'-6"	435
B3	8	#4	STR	26'-6"	142
B4	12	#4	STR	26'-10"	215
B5	6	#9	1	53'-6"	1091
B6	13	#4	STR	4'-4"	38
B7	12	#4	STR	24'-5"	196
H1	19	#5	5	13'-7"	269
H2	11	#5	5	13'-4"	153
H3	20	#5	6	12'-4"	257
H4	11	#5	6	12'-6"	143
H5	8	#5	5	17'-2"	143
H6	9	#5	6	16'-4"	153
H7	17	#5	STR	8'-0"	142
K1	8	#4	STR	2'-4"	12
K2	20	#4	STR	6'-1"	81
S1	57	#5	2	12'-4"	733
S2	49	#5	3	5'-3"	268
S3	32	#4	4	6'-6"	139
U1	36	#4	7	7'-10"	188
V1	79	#5	STR	7'-4"	604
V2	8	#5	STR	9'-5"	79
V3	2	#5	STR	9'-1"	19
V4	8	#5	STR	9'-9"	81
V5	2	#5	STR	9'-5"	20
V6	24	#5	STR	8'-11"	223
V7	22	#5	STR	9'-4"	214
V8	8	#5	STR	4'-0"	33
REINFORCING STEEL					7,461
CLASS A CONCRETE BREAKDOWN:					
POUR #1: CAP, COLLARS, ETC.					C.Y. 42.5
POUR #2: UPPER WINGS					C.Y. 6.4
CLASS A CONCRETE TOTAL					C.Y. 48.9

jhagenbush

4/27/2023

c:\p\w\king\dm5537a\27070\_SML\_E103\_220489.dgn

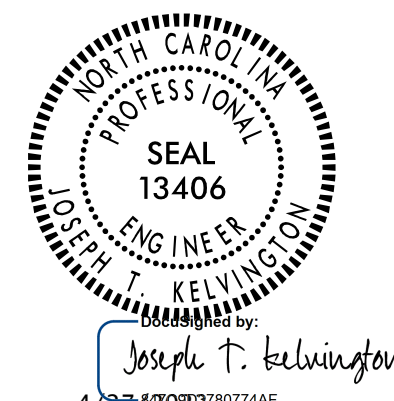


NOTES:

TOP SURFACE AREAS OF THE END BENT CAP SHALL BE KEPT CLEAN AND FREE OF LAITANCE.

ROUGH FLOAT AND ROUGHEN THE TOP OF THE END BENT CAP UNDER END BENT DIAPHRAGM TO PROVIDE MIN. SURFACE AMPLITUDE OF 1/4", EXCEPT UNDER BEARING AREAS.

2 BR DENOTES 2 BAR RUN.



PROJECT NO. R-2707D

CLEVELAND COUNTY

STATION: 20+16.72 -Y2-

SHEET 3 OF 3

STATE OF NORTH CAROLINA DEPARTMENT OF TRANSPORTATION RALEIGH					
SUBSTRUCTURE					
END BENT 1 DETAILS					
REVISIONS					
NO.	BY:	DATE:	NO.	BY:	DATE:
1			3		
2			4		

SHEET NO.	S2-26
TOTAL SHEETS	35

Stantec Consulting Services Inc.  
801 Jones Franklin Road  
Suite 300  
Raleigh, NC 27606  
Tel. (919) 851-6866  
Fax. (919) 851-7024  
www.stantec.com  
License No. F-0672

DRAWN BY: M. B. ISENHOUR DATE: 08/14/18  
CHECKED BY: V. E. FRAGA DATE: 10/23/18  
DESIGN ENGINEER OF RECORD: J.T. KELVINGTON DATE: 04/27/22