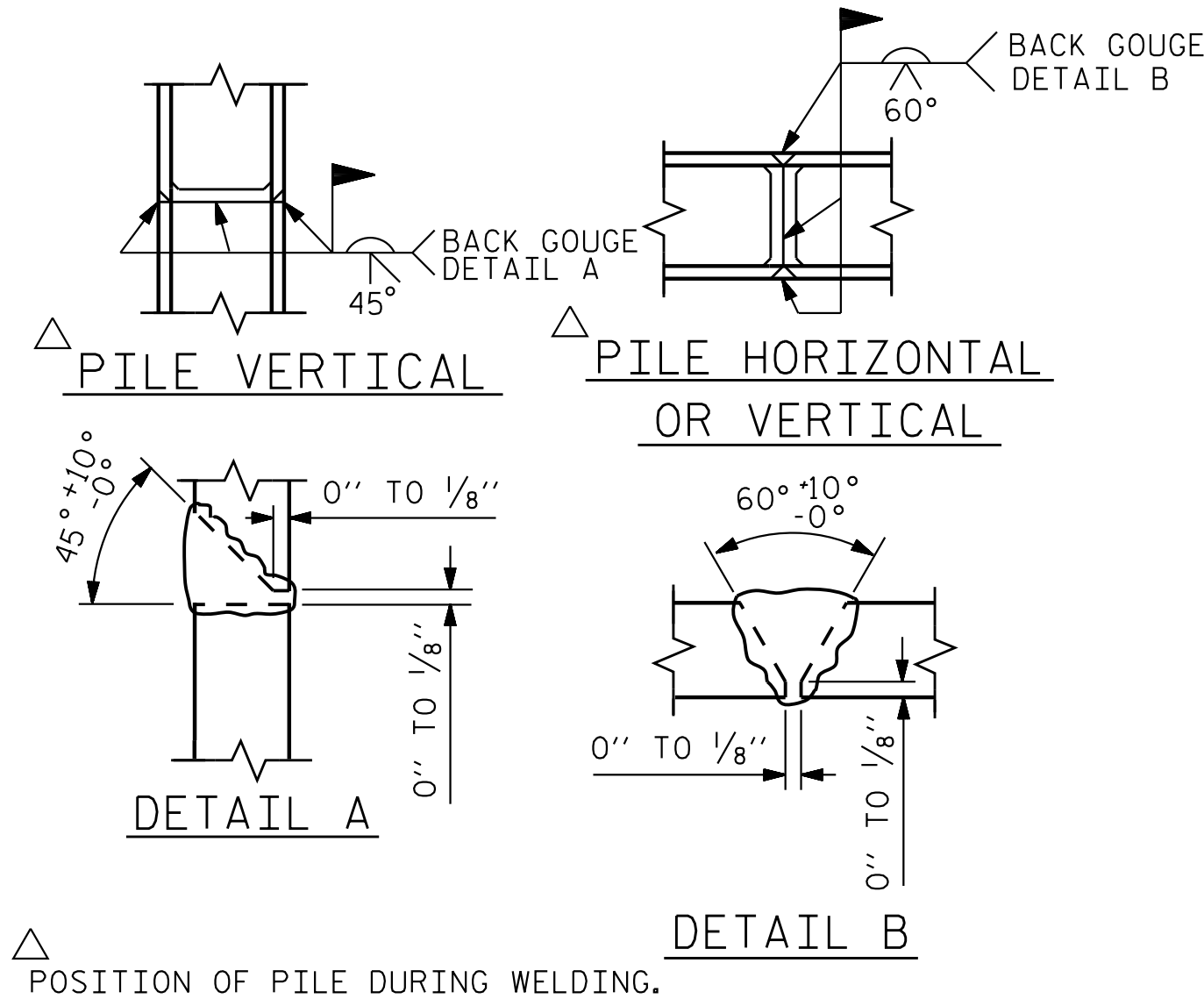


BAGGED STONE AND PIPE SHALL BE PLACED IMMEDIATELY AFTER COMPLETION OF END BENT EXCAVATION. PIPE MAY BE EITHER CONCRETE, CORRUGATED STEEL, CORRUGATED ALUMINUM ALLOY, OR CORRUGATED PLASTIC. PERFORATED PIPE WILL NOT BE ALLOWED.

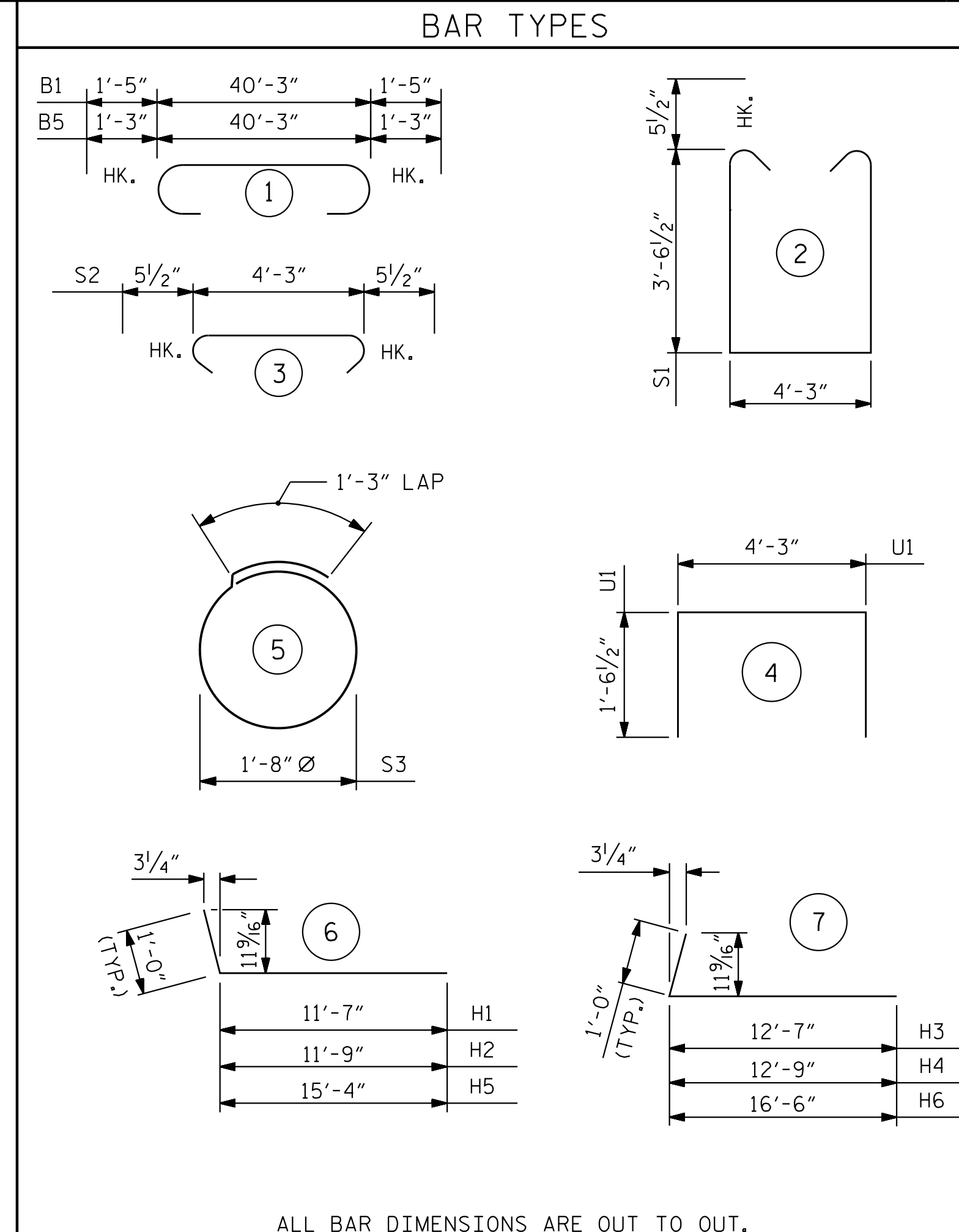
BAGGED STONE SHALL REMAIN IN PLACE UNTIL THE ENGINEER DIRECTS THAT IT BE REMOVED. THE CONTRACTOR SHALL REMOVE AND DISPOSE OF SILT ACCUMULATIONS AT BAGGED STONE WHEN SO DIRECTED BY THE ENGINEER. BAGS SHALL BE REMOVED AND REPLACED WHENEVER THE ENGINEER DETERMINES THAT THEY HAVE DETERIORATED AND LOST THEIR EFFECTIVENESS.

NO SEPARATE PAYMENT WILL BE MADE FOR THIS WORK AND THE ENTIRE COST OF THIS WORK SHALL BE INCLUDED IN THE UNIT CONTRACT PRICE BID FOR THE SEVERAL PAY ITEMS.

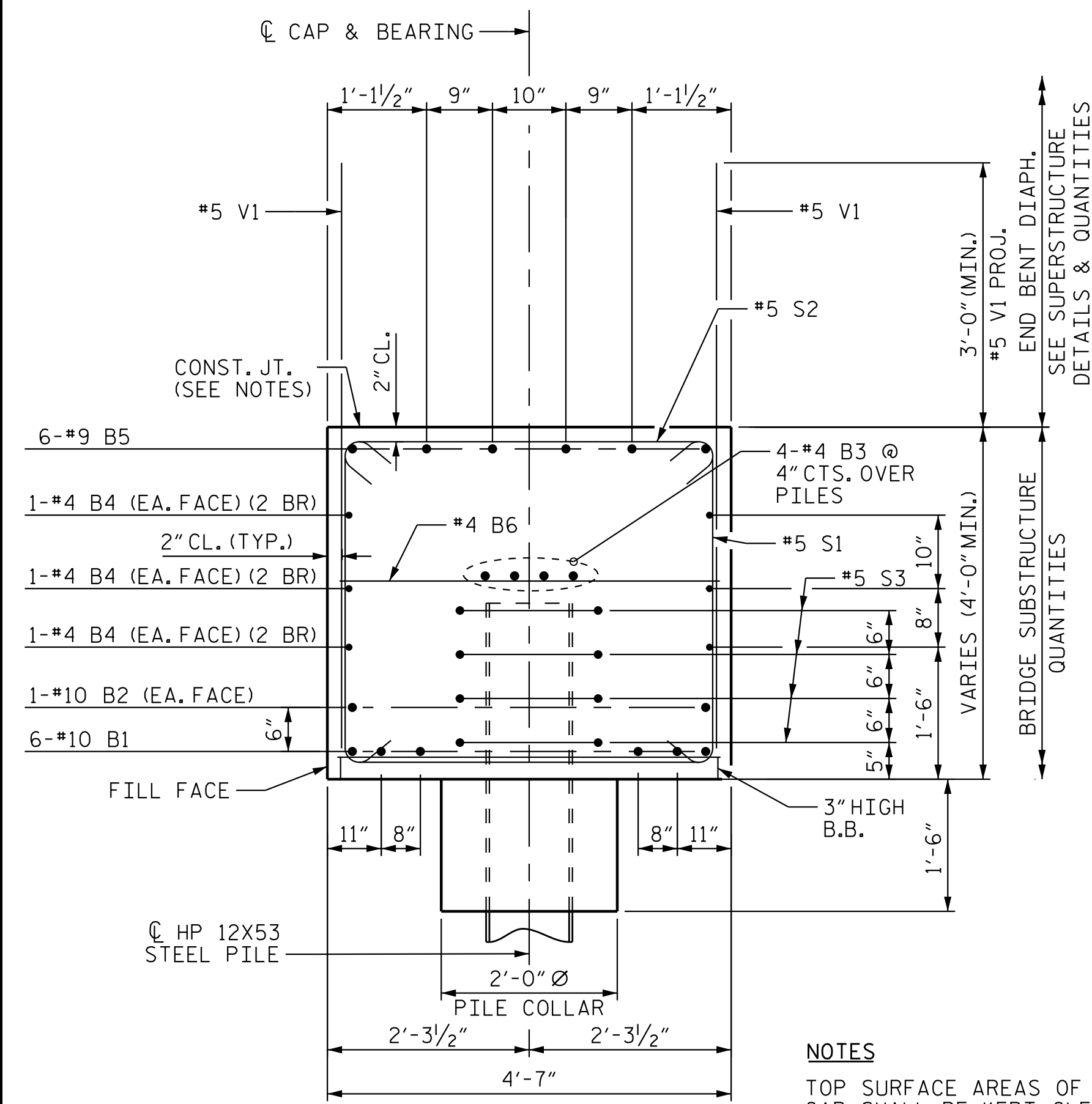
TEMPORARY DRAINAGE AT END BENT



PILE SPLICE DETAILS



BILL OF MATERIAL					
END BENT 2					
BAR	NO.	SIZE	TYPE	LENGTH	WEIGHT
B1	6	#10	1	43'-1"	1112
B2	2	#10	STR	39'-9"	342
B3	4	#4	STR	39'-9"	106
B4	12	#4	STR	21'-6"	172
B5	6	#9	1	42'-9"	872
B6	11	#4	STR	4'-3"	31
B7	6	#4	STR	21'-8"	87
H1	11	#5	6	12'-7"	144
H2	19	#5	6	12'-9"	253
H3	19	#5	7	13'-7"	269
H4	11	#5	7	13'-9"	158
H5	8	#5	6	16'-4"	136
H6	8	#5	7	17'-6"	146
H7	16	#5	STR	8'-0"	134
K1	8	#4	STR	2'-4"	12
K2	20	#4	STR	6'-0"	80
S1	43	#5	2	12'-3"	549
S2	36	#5	3	5'-2"	194
S3	28	#4	5	6'-6"	122
U1	22	#4	4	7'-4"	108
V1	65	#5	STR	7'-0"	475
V2	22	#5	STR	8'-11"	205
V3	8	#5	STR	9'-6"	79
V4	2	#5	STR	9'-2"	19
V5	24	#5	STR	9'-3"	232
V6	8	#5	STR	9'-8"	81
V7	2	#5	STR	9'-4"	19
V8	8	#5	STR	3'-0"	25
REINFORCING STEEL					LBS. 6,162
CLASS A CONCRETE BREAKDOWN:					
POUR #1: CAP, COLLARS, LWR. WINGS C.Y.					33.3
POUR #2: BACKWALL, UPPER WINGS C.Y.					6.2
CLASS A CONCRETE TOTAL					C.Y. 39.5

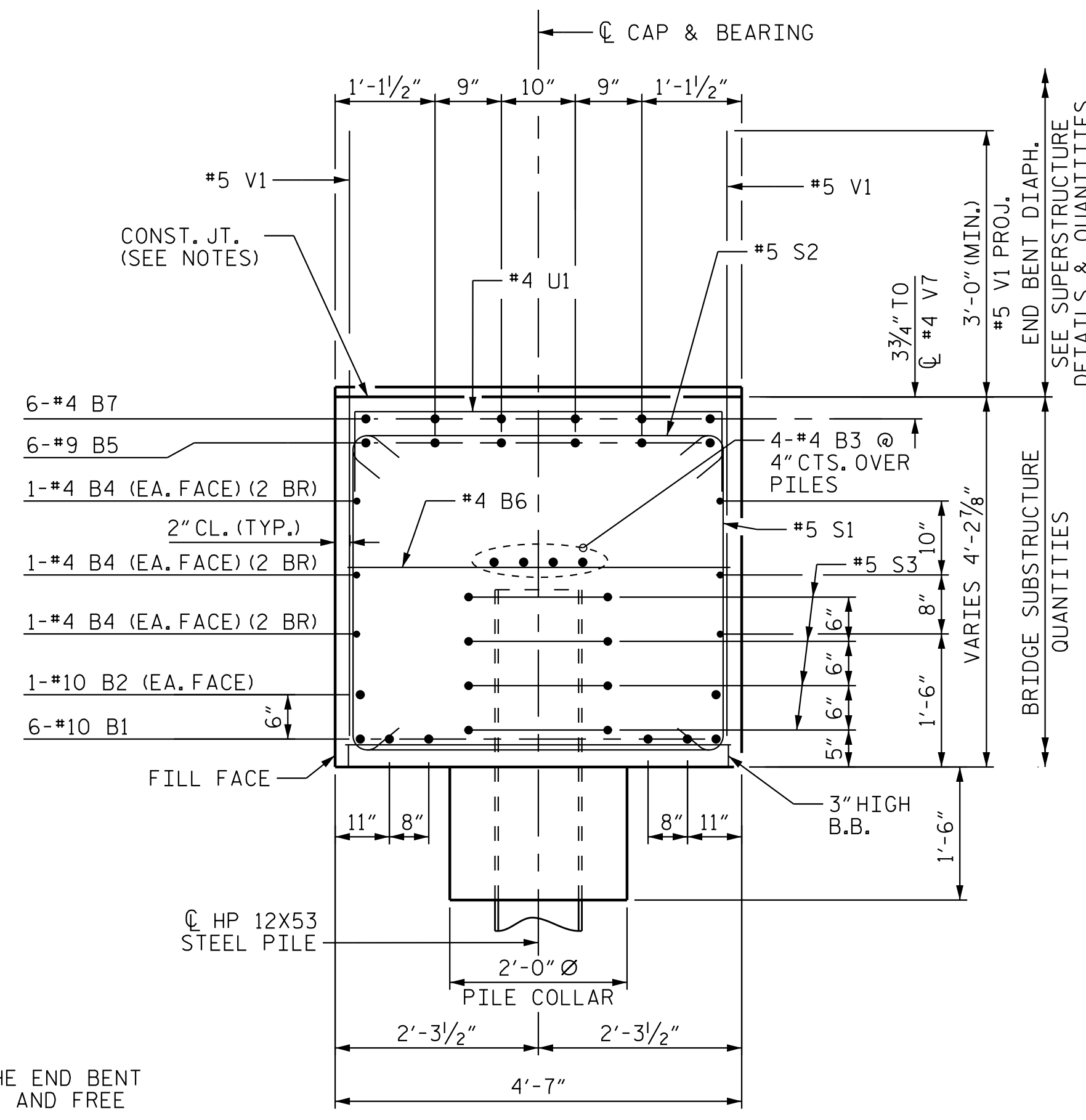


NOTES

TOP SURFACE AREAS OF THE END BENT CAP SHALL BE KEPT CLEAN AND FREE OF LAITANCE.

ROUGH FLOAT AND ROUGHEN THE TOP OF THE END BENT CAP UNDER END BENT DIAPHRAGM TO PROVIDE MIN. SURFACE AMPLITUDE OF 1/4" EXCEPT UNDER BEARING AREAS.

2 BR DENOTES 2 BAR RUN.



Stantec Consulting Services Inc.
801 Jones Franklin Road
Suite 300
Raleigh, NC 27606
Tel. (919) 851-6866
Fax. (919) 851-7024
www.stantec.com
License No. F-0672

DRAWN BY: J. B. GEILE DATE: 01/10/18
CHECKED BY: N. D'AIUTO DATE: 02/13/18
DESIGN ENGINEER OF RECORD: J. KELVINGTON DATE: 04/27/23

SEAL 13406
J. KELVINGTON

DOCUMENT NOT CONSIDERED FINAL UNLESS ALL SIGNATURES COMPLETED

PROJECT NO. R-2707D
CLEVELAND COUNTY
STATION: 19+82.46 -Y1-

SHEET 3 OF 3

REVISIONS						SHEET NO. S1-29
NO.	BY:	DATE:	NO.	BY:	DATE:	
1			3			TOTAL SHEETS 32
2			4			

DEPARTMENT OF TRANSPORTATION
RALEIGH
SUBSTRUCTURE
END BENT 2 DETAILS