

- (A) CLASS A CONC. WING WALL
- (B) CLASS AA CONC. END BENT DIAPHRAGM

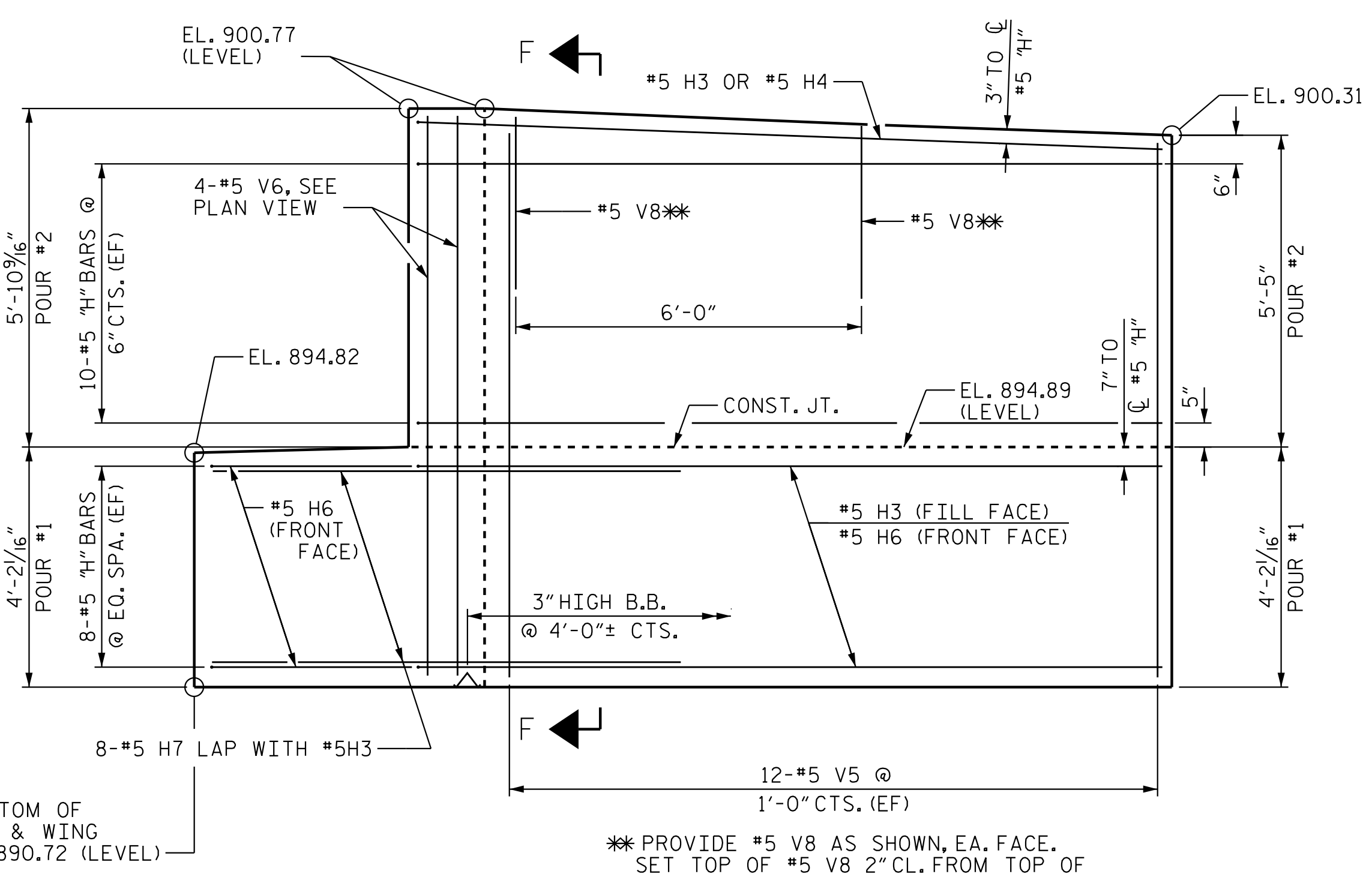
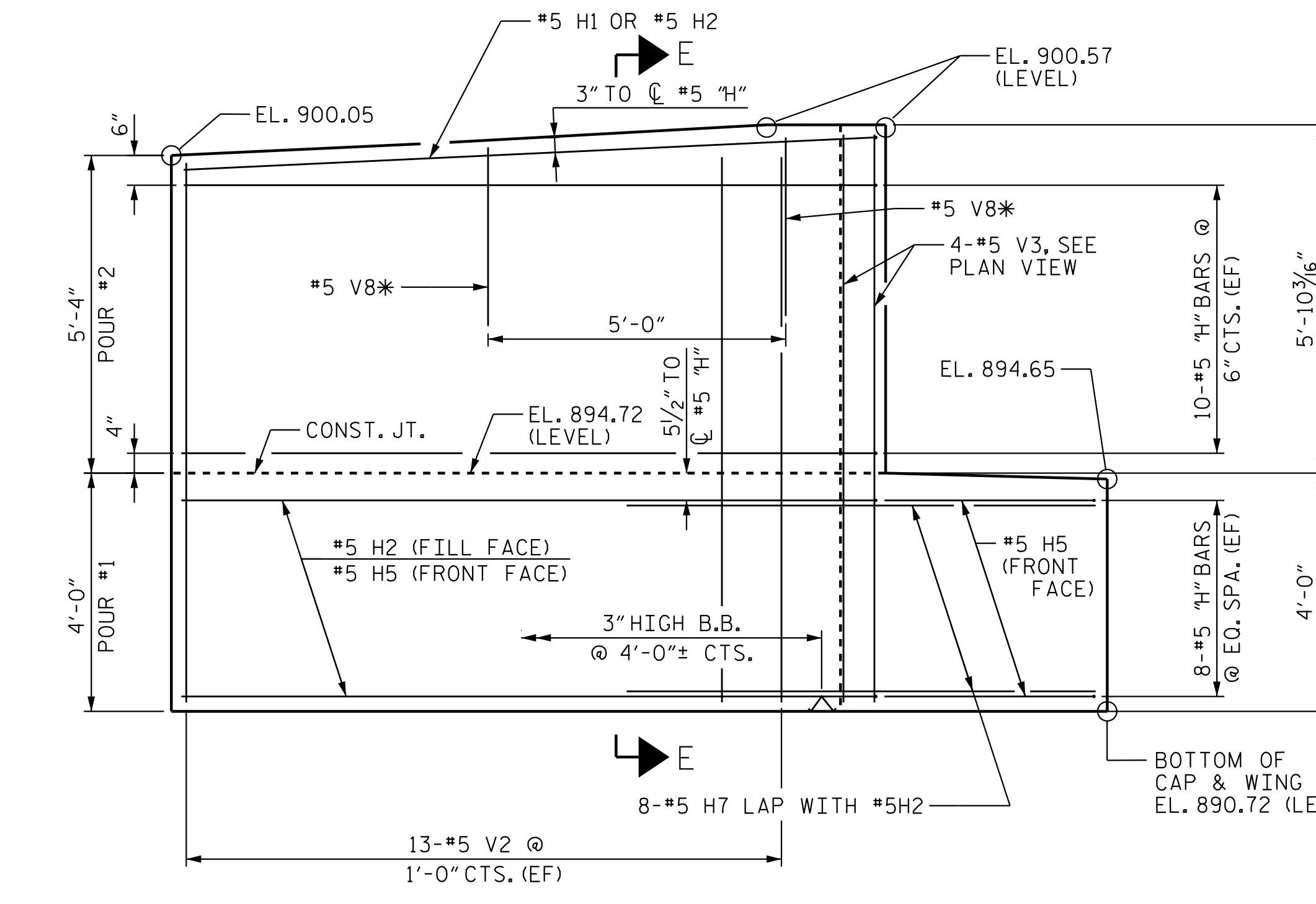
PROJECT NO. R-2707D  
 CLEVELAND COUNTY  
 STATION: 19+82.46 -Y1-

SHEET 2 OF 3

STATE OF NORTH CAROLINA  
 DEPARTMENT OF TRANSPORTATION  
 RALEIGH  
 SUBSTRUCTURE  
 END BENT 2 WING  
 DETAILS



REVISIONS						SHEET NO. S1-28
NO.	BY:	DATE:	NO.	BY:	DATE:	
1			3			TOTAL SHEETS 32
2			4			

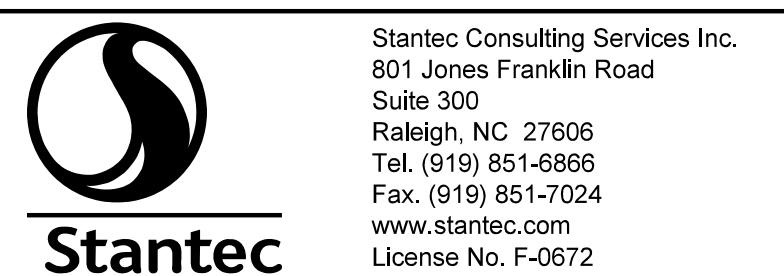


\* PROVIDE #5 V8 AS SHOWN, EA. FACE.  
 SET TOP OF #5 V8 2" CL. FROM TOP OF WING WALL. LAP W/#5 V2.

NOTE: TOP SURFACE OF END BENT CAP BETWEEN EDGE OF DECK SLAB AND END OF CAP SHALL BE SLOPED TRANSVERSELY FROM EXPOSED FACE OF THE WING TO FRONT FACE AT A RATE OF 1/4" / FT.  
 (EF) DENOTES EACH FACE.

\*\* PROVIDE #5 V8 AS SHOWN, EA. FACE.  
 SET TOP OF #5 V8 2" CL. FROM TOP OF WING WALL. LAP W/#5 V5.

NOTES:  
 Δ AREA BETWEEN APPROACH SLAB CURB AND BLOCKOUT SHALL MATCH THE FINISHED SURFACE OF THE BRIDGE DECK.  
 CONCRETE TO BE POURED IN THE HATCHED AREA TO MATCH THE TOP OF THE CURB AND THE INTEGRAL END BENT WING ELEVATION.  
 THE CONCRETE IN THE HATCHED AREA OF THE WING IS TO BE POURED AFTER THE JOINT BETWEEN THE BRIDGE DECK AND THE APPROACH SLAB HAS BEEN SAWS AND IF SLIP FORMING IS USED, THE BARRIER HAS BEEN CAST.  
 #5 H7 BARS MAY BE REPOSITIONED SLIGHTLY, VERTICALLY TO CLEAR CAP REINFORCEMENT AND HORIZONTALLY TO CLEAR THE PILE.



Stantec Consulting Services Inc.  
 801 Jones Franklin Road  
 Suite 300  
 Raleigh, NC 27606  
 Tel. (919) 851-6866  
 Fax. (919) 851-7024  
 www.stantec.com  
 License No. F-0672

DESIGNED BY: J. B. GEILE DATE: 02/08/18  
 ENGINEER OF RECORD: J. KELVINGTON DATE: 04/27/23  
 CHECKED BY: N. D'AIUTO DATE: 02/12/18

4/27/2023 10:26:42 AM jhagenbush  
 4/27/2023 10:26:42 AM jhagenbush  
 4/27/2023 10:26:42 AM jhagenbush