

NOTES

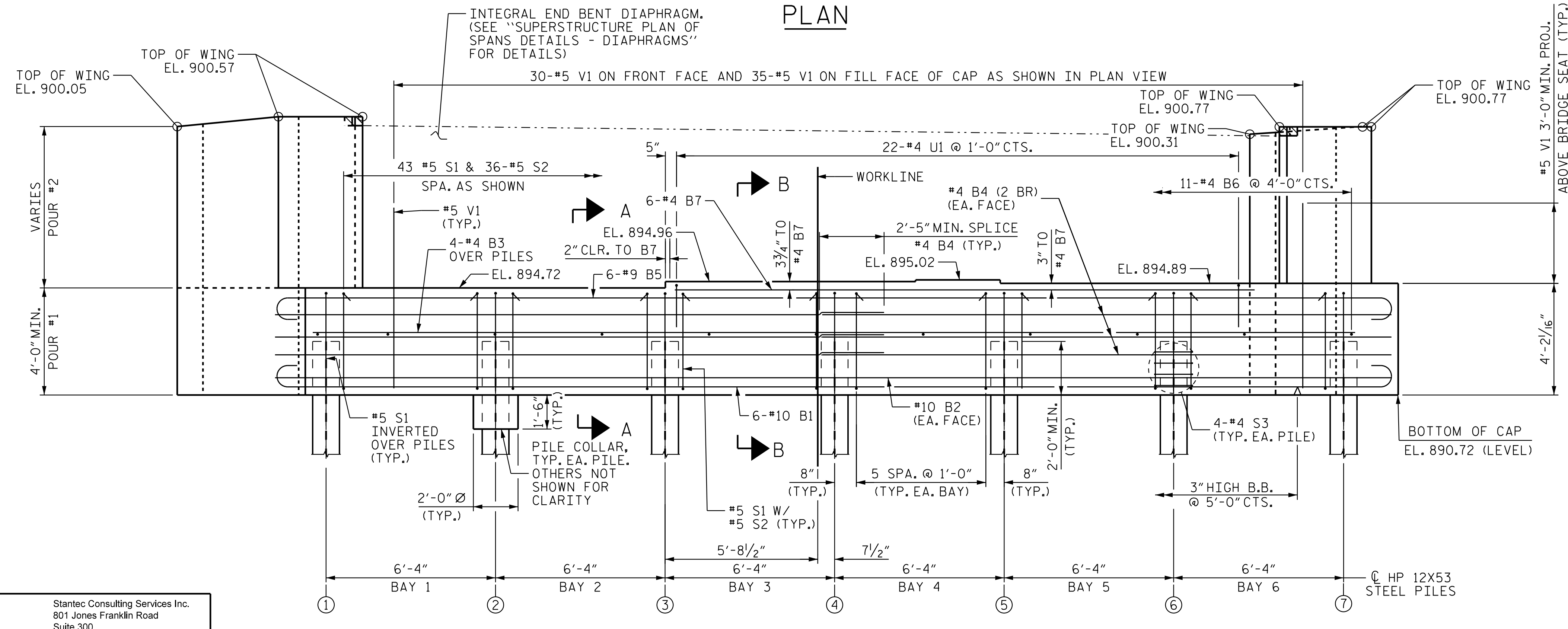
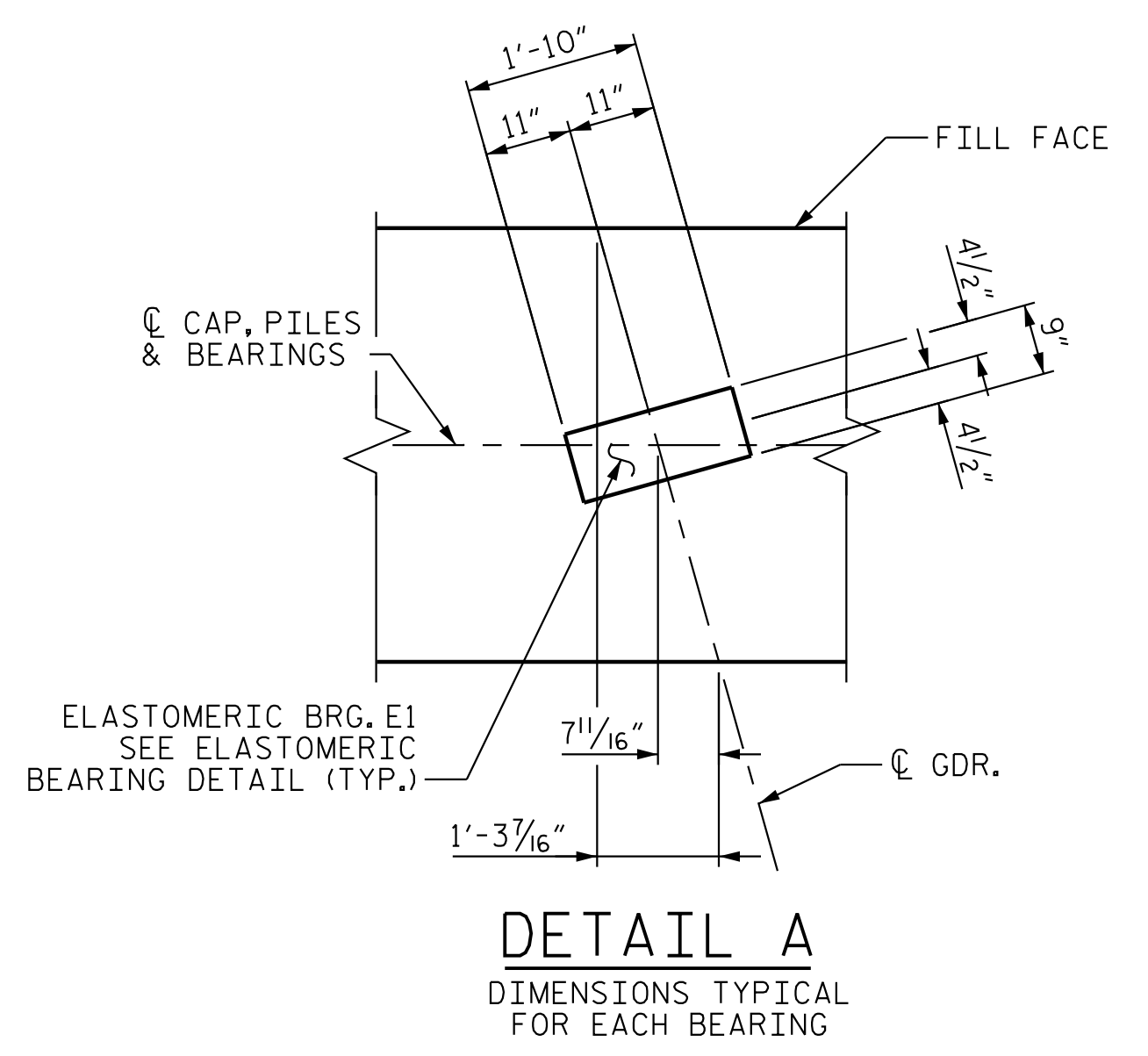
FOR WING WALL DETAILS, SEE "END BENT 2 DETAILS - WING WALLS" SHT. 2 OF 3.

2 BR DENOTES 2 BAR RUN.

CHAMFERS ARE NOT REQUIRED EXCEPT AS NOTED.

Ⓐ SLOPE CAP SURFACE BEYOND LIMIT OF INTEGRAL DIAPH. SEE END BENT 2 WING WALL DETAILS, SHT. 2 OF 3.

* PLACE 1" EXP. JT. MAT'L. IN APPROACH SLAB PAV'T. NOTCH.



PROJECT NO. R-2707D
CLEVELAND COUNTY
 STATION: 19+82.46 -Y1-

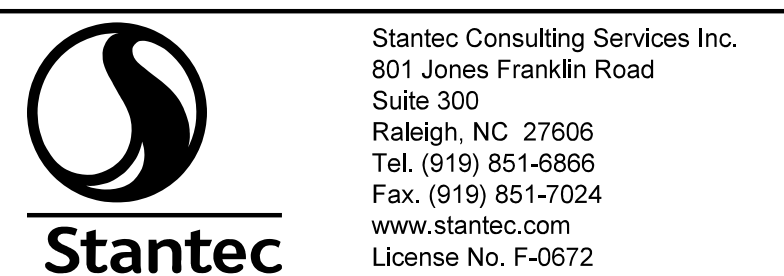
SHEET 1 OF 3

STATE OF NORTH CAROLINA
 DEPARTMENT OF TRANSPORTATION
 RALEIGH
 SUBSTRUCTURE
 END BENT 2



REVISIONS						SHEET NO. S1-27
NO.	BY:	DATE:	NO.	BY:	DATE:	
1			3			TOTAL SHEETS 32
2			4			

DOCUMENT NOT CONSIDERED FINAL UNLESS ALL SIGNATURES COMPLETED



DRAWN BY: J. B. GEILE DATE: 02/02/18
 CHECKED BY: N. D'AIUTO DATE: 02/15/18
 DESIGN ENGINEER OF RECORD: J. KELVINGTON DATE: 04/27/23

4/27/2023 10:26:02 AM j_hagenbush 4/27/2023 10:26:02 AM j_hagenbush