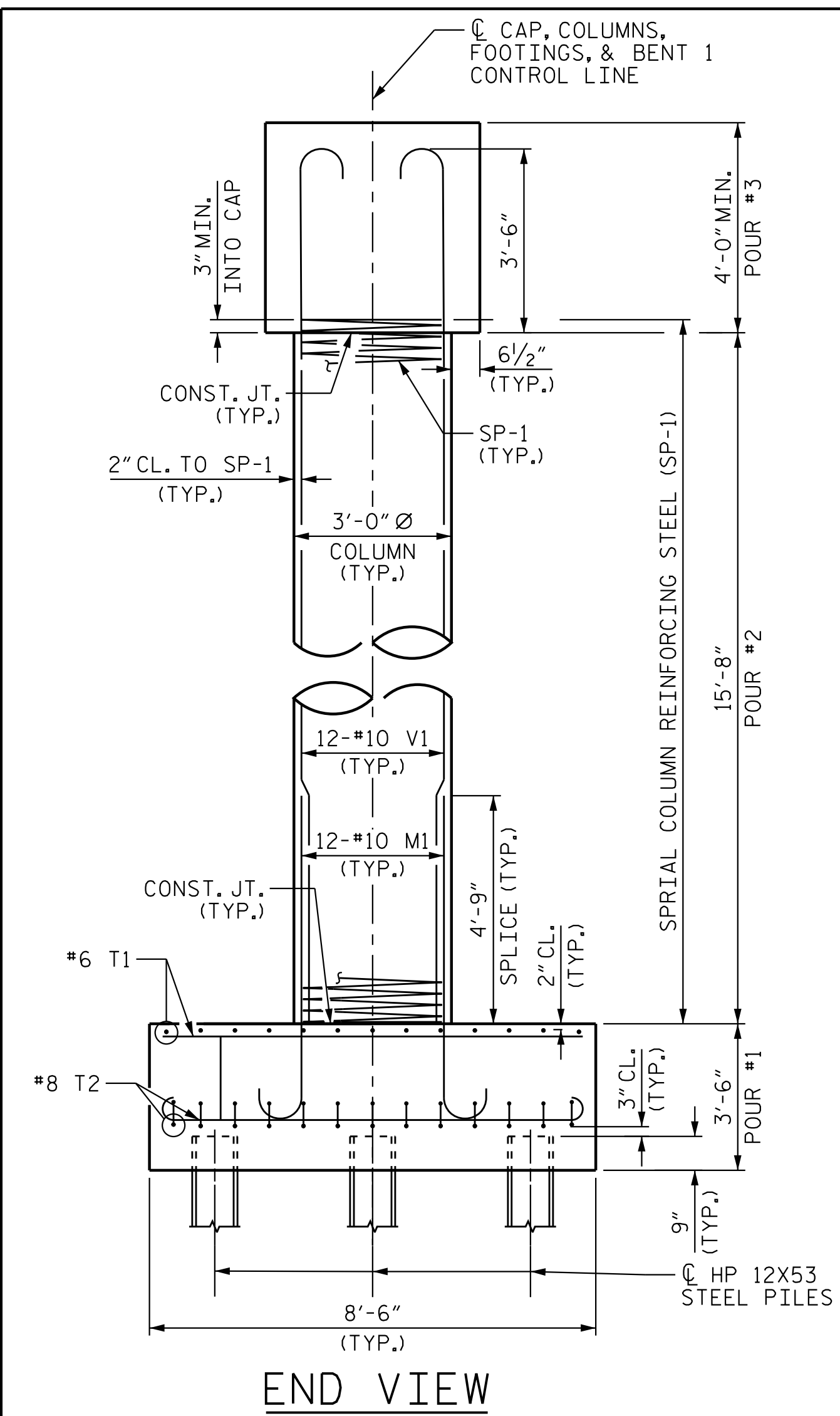
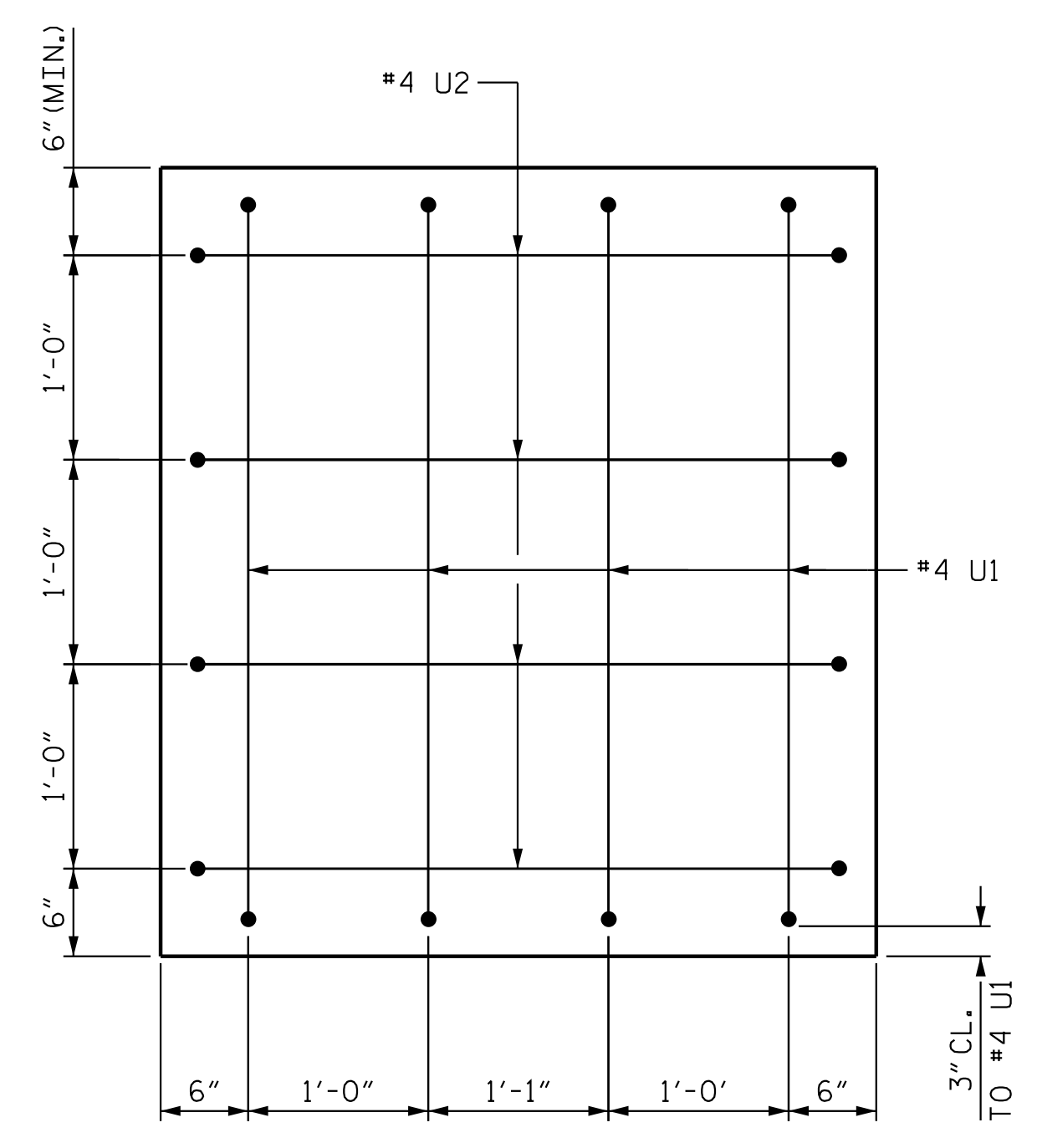


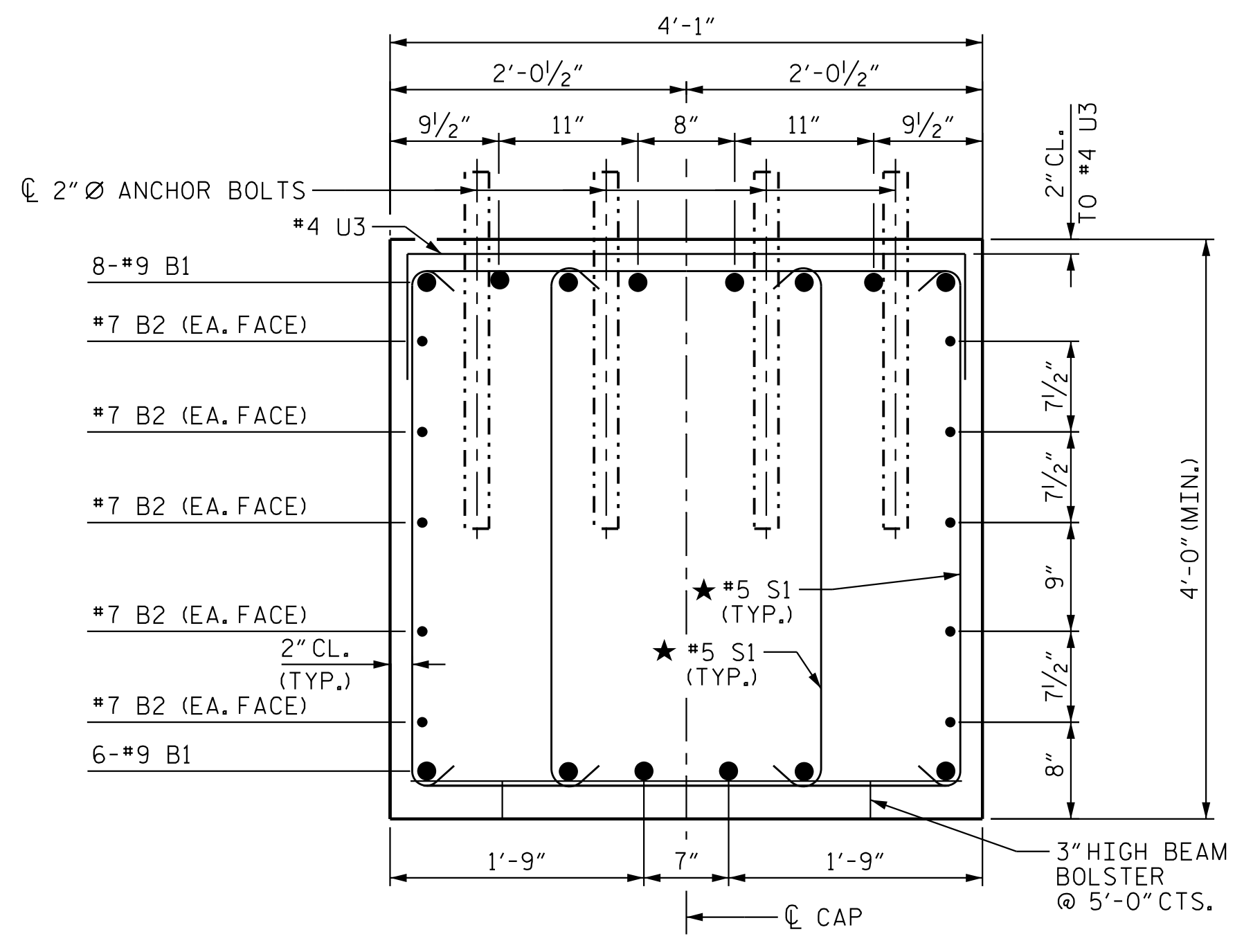
4/27/2023 10:25:49 AM j\_hagenbush



**END VIEW**

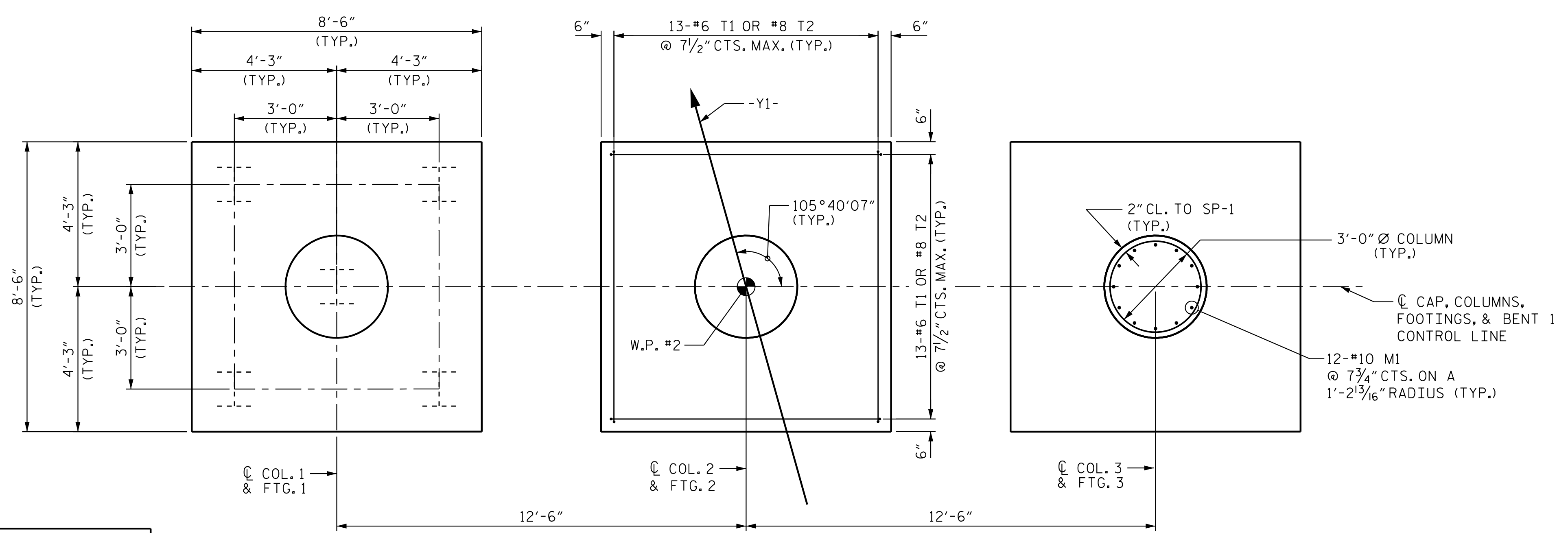


**VIEW A-A**



**SECTION B-B**

★ INVERT ALTERNATE STIRRUPS



**PLAN OF FOOTING AND COLUMNS**

BILL OF MATERIAL				
BENT 1				
BAR NO.	SIZE	TYPE	LENGTH	WEIGHT
B1	#9		35'-4"	1682
B2	#7	STR	32'-10"	671
M1	#10		8'-6"	1317
S1	#5		11'-1"	971
S2	#5		11'-11"	298
T1	#6	STR	8'-0"	937
T2	#8		9'-10"	2048
U1	#4		6'-6"	35
U2	#4		6'-7"	35
U3	#4		6'-9"	90
V1	#10		20'-7"	3189
REINFORCING STEEL				LBS. 11,273
SP-1	3	**	4 550'-1"	1102
** THE SP-1 SPIRAL REINFORCING STEEL SHALL BE W-20 OR D-20 COLD DRAWN WIRE OR #4 PLAIN OR DEFORMED BAR.				
SPIRAL COLUMN REINFORCING STEEL				LBS. 1,102
CLASS A CONCRETE BREAKDOWN:				
POUR #1 (FOOTINGS)				C.Y. 28.0
POUR #2 (COLUMNS)				C.Y. 12.3
POUR #3 (CAP)				C.Y. 20.6
TOTAL CLASS A CONCRETE				C.Y. 60.9

ALL BAR DIMENSIONS ARE OUT TO OUT.

PROJECT NO. R-2707D  
CLEVELAND COUNTY  
 STATION: 19+82.46 -Y1-

SHEET 2 OF 2

STATE OF NORTH CAROLINA  
 DEPARTMENT OF TRANSPORTATION  
 RALEIGH  
 SUBSTRUCTURE  
**BENT 1 DETAILS**

REVISIONS					
NO.	BY:	DATE:	NO.	BY:	DATE:
1			3		
2			4		

SHEET NO. S1-26  
 TOTAL SHEETS 32



Stantec Consulting Services Inc.  
 801 Jones Franklin Road  
 Suite 300  
 Raleigh, NC 27606  
 Tel. (919) 851-6866  
 Fax. (919) 851-7024  
 www.stantec.com  
 License No. F-0672

DRAWN BY: J. B. GEILE DATE: 02/07/18  
 CHECKED BY: N. D'AIUTO DATE: 02/13/18  
 DESIGN ENGINEER OF RECORD: J. KELVINGTON DATE: 04/27/23

DOCUMENT NOT CONSIDERED FINAL UNLESS ALL SIGNATURES COMPLETED