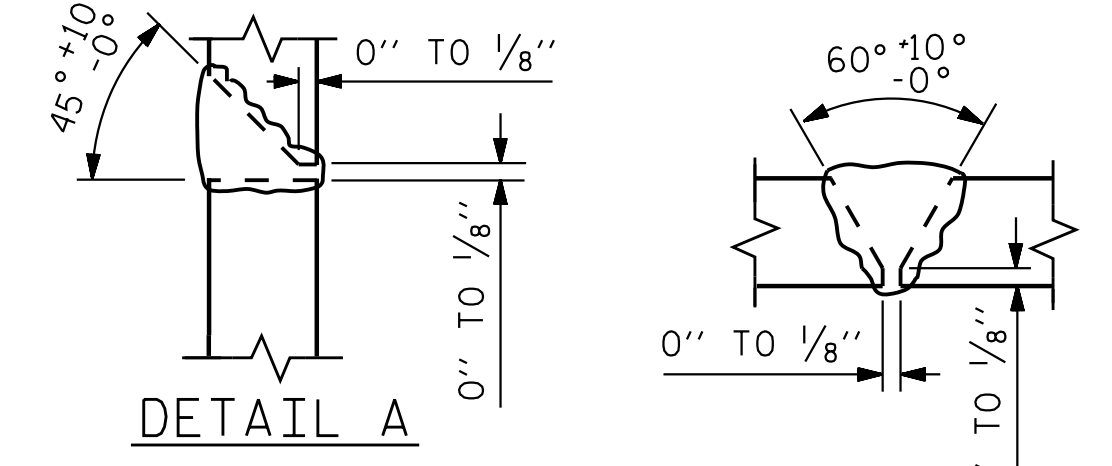
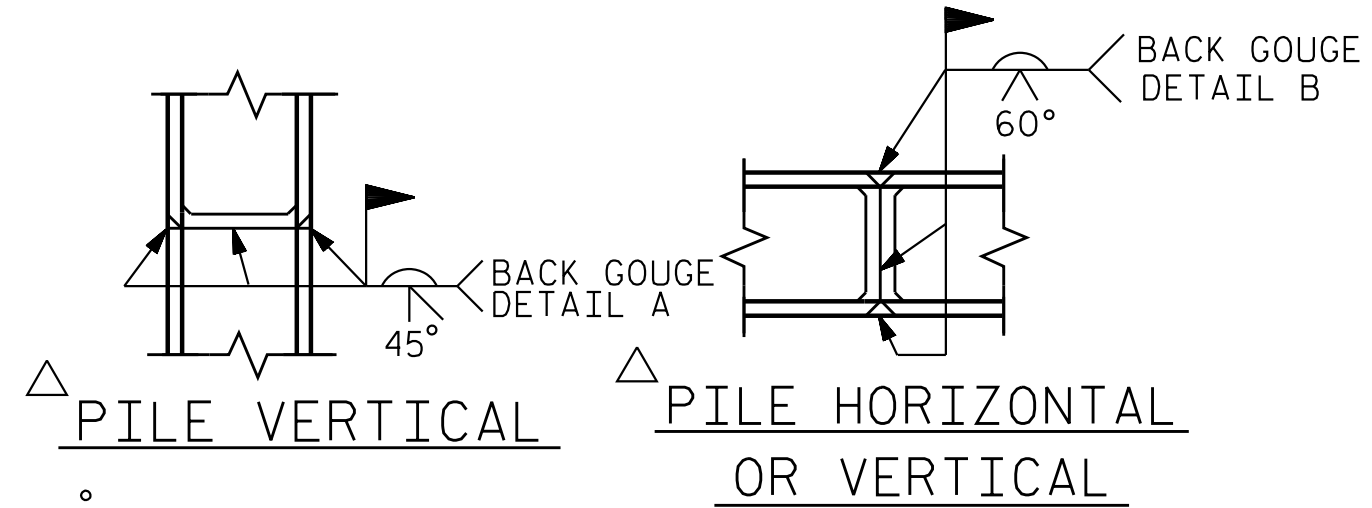


BAGGED STONE AND PIPE SHALL BE PLACED IMMEDIATELY AFTER COMPLETION OF END BENT EXCAVATION. PIPE MAY BE EITHER CONCRETE, CORRUGATED STEEL, CORRUGATED ALUMINUM ALLOY, OR CORRUGATED PLASTIC. PERFORATED PIPE WILL NOT BE ALLOWED.

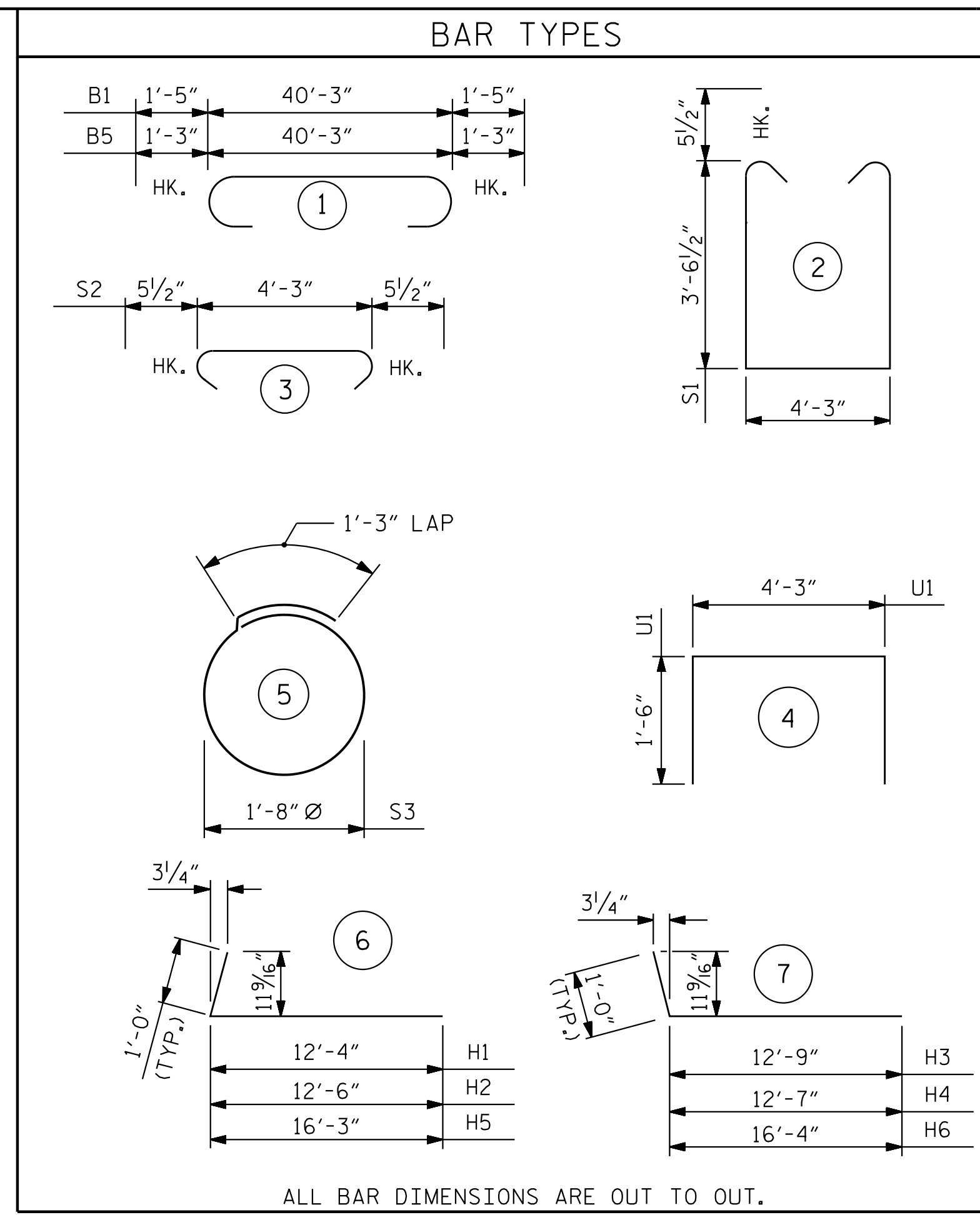
BAGGED STONE SHALL REMAIN IN PLACE UNTIL THE ENGINEER DIRECTS THAT IT BE REMOVED. THE CONTRACTOR SHALL REMOVE AND DISPOSE OF SILT ACCUMULATIONS AT BAGGED STONE WHEN SO DIRECTED BY THE ENGINEER. BAGS SHALL BE REMOVED AND REPLACED WHENEVER THE ENGINEER DETERMINES THAT THEY HAVE DETERIORATED AND LOST THEIR EFFECTIVENESS.

NO SEPARATE PAYMENT WILL BE MADE FOR THIS WORK AND THE ENTIRE COST OF THIS WORK SHALL BE INCLUDED IN THE UNIT CONTRACT PRICE BID FOR THE SEVERAL PAY ITEMS.

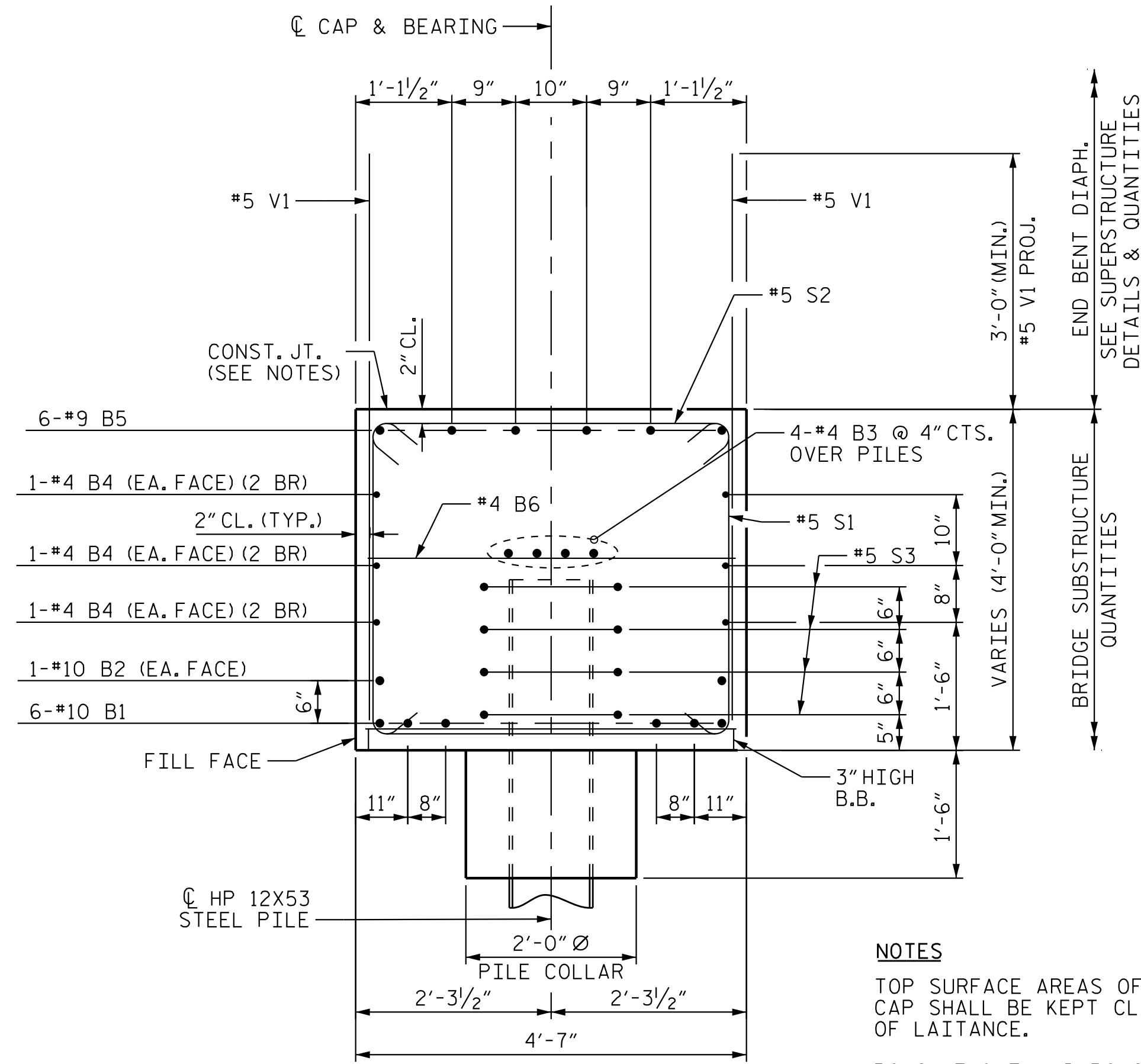
**TEMPORARY DRAINAGE AT END BENT**



**PILE SPLICE DETAILS**



BILL OF MATERIAL					
END BENT 1					
BAR	NO.	SIZE	TYPE	LENGTH	WEIGHT
B1	6	#10	1	43'-1"	1112
B2	2	#10	STR	39'-9"	342
B3	4	#4	STR	39'-9"	106
B4	12	#4	STR	21'-6"	172
B5	6	#9	1	42'-9"	872
B6	11	#4	STR	4'-3"	31
B7	6	#4	STR	21'-8"	87
H1	20	#5	6	13'-4"	278
H2	12	#5	6	13'-6"	169
H3	20	#5	7	13'-9"	287
H4	12	#5	7	13'-7"	170
H5	8	#5	6	17'-3"	144
H6	8	#5	7	17'-4"	145
H7	16	#5	STR	8'-0"	134
K1	8	#4	STR	2'-4"	12
K2	20	#4	STR	6'-0"	80
S1	43	#5	2	12'-3"	549
S2	36	#5	3	5'-2"	194
S3	28	#4	5	6'-6"	122
U1	22	#4	4	7'-3"	107
V1	65	#5	STR	7'-1"	480
V2	32	#5	STR	9'-7"	320
V3	2	#5	STR	9'-3"	19
V4	32	#5	STR	9'-5"	314
V5	2	#5	STR	9'-1"	19
REINFORCING STEEL					LBS. 6,265
CLASS A CONCRETE BREAKDOWN:					
POUR#1: CAP, COLLARS, LWR. WINGS					C.Y. 33.3
POUR#2: WING WALLS, UPPER WINGS					C.Y. 6.5
CLASS A CONCRETE TOTAL					C.Y. 39.8



**SECTION A-A**

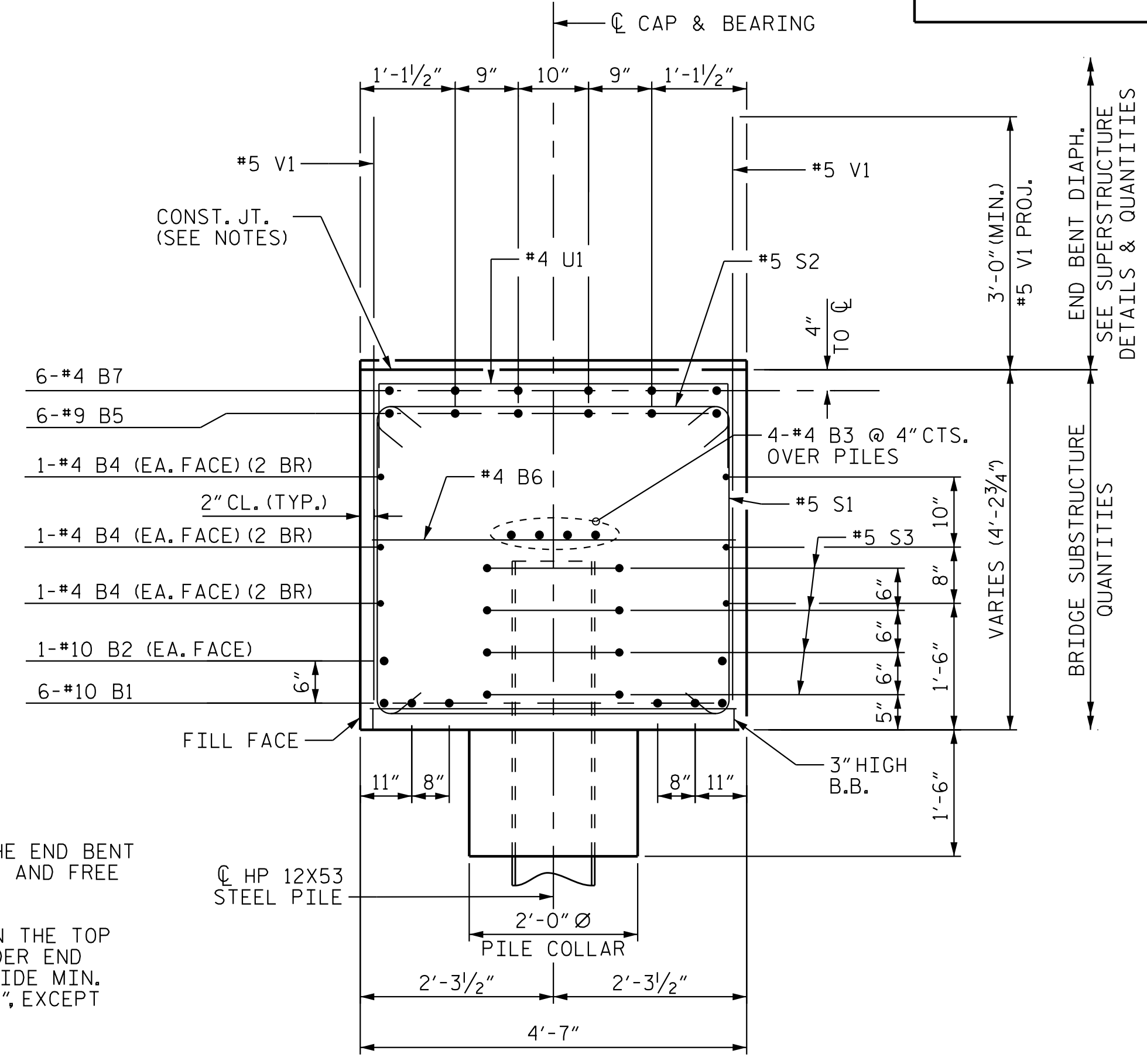
SEE "END BENT 1", SHEET 1 OF 3.

**NOTES**

TOP SURFACE AREAS OF THE END BENT CAP SHALL BE KEPT CLEAN AND FREE OF LAITANCE.

ROUGH FLOAT AND ROUGHEN THE TOP OF THE END BENT CAP UNDER END BENT DIAPHRAGM TO PROVIDE MIN. SURFACE AMPLITUDE OF 1/4", EXCEPT UNDER BEARING AREAS.

2 BR DENOTES 2 BAR RUN.



**SECTION B-B**

SEE "END BENT 1", SHEET 1 OF 3.



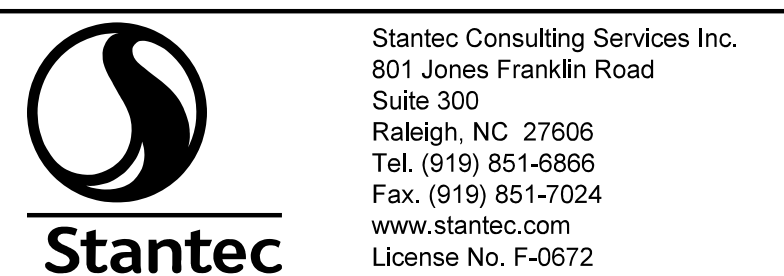
PROJECT NO. R-2707D

CLEVELAND COUNTY

STATION: 19+82.46 -Y1-

SHEET 3 OF 3

STATE OF NORTH CAROLINA					
DEPARTMENT OF TRANSPORTATION					
RALEIGH					
SUBSTRUCTURE					
END BENT 1 DETAILS					
REVISIONS					
NO.	BY:	DATE:	NO.	BY:	DATE:
1			3		
2			4		
SHEET NO. S1-24					TOTAL SHEETS 32



DRAWN BY: J. B. GEILE DATE: 01/10/18

CHECKED BY: N. D'AIUTO DATE: 02/13/18

DESIGN ENGINEER OF RECORD: J. KELVINGTON DATE: 04/27/23

DOCUMENT NOT CONSIDERED FINAL UNLESS ALL SIGNATURES COMPLETED