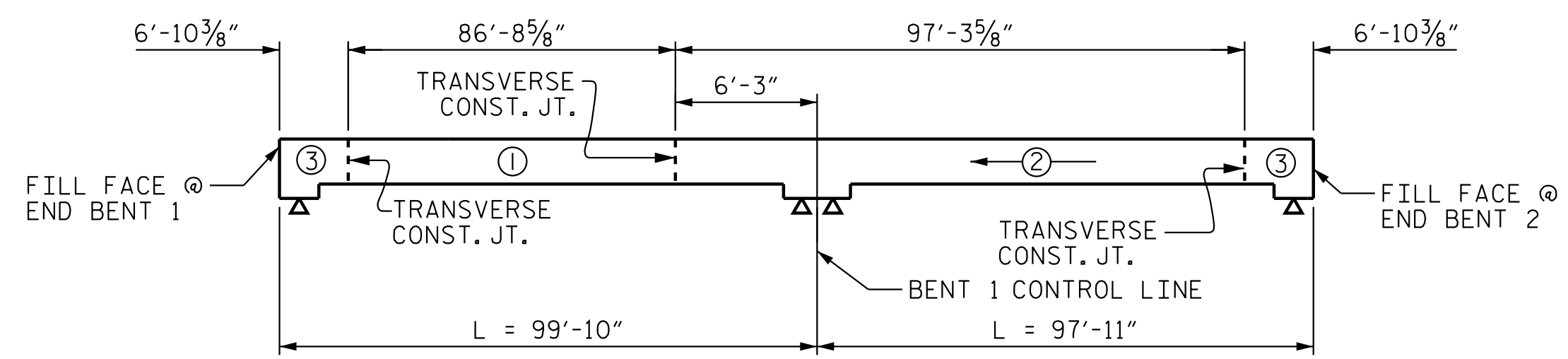
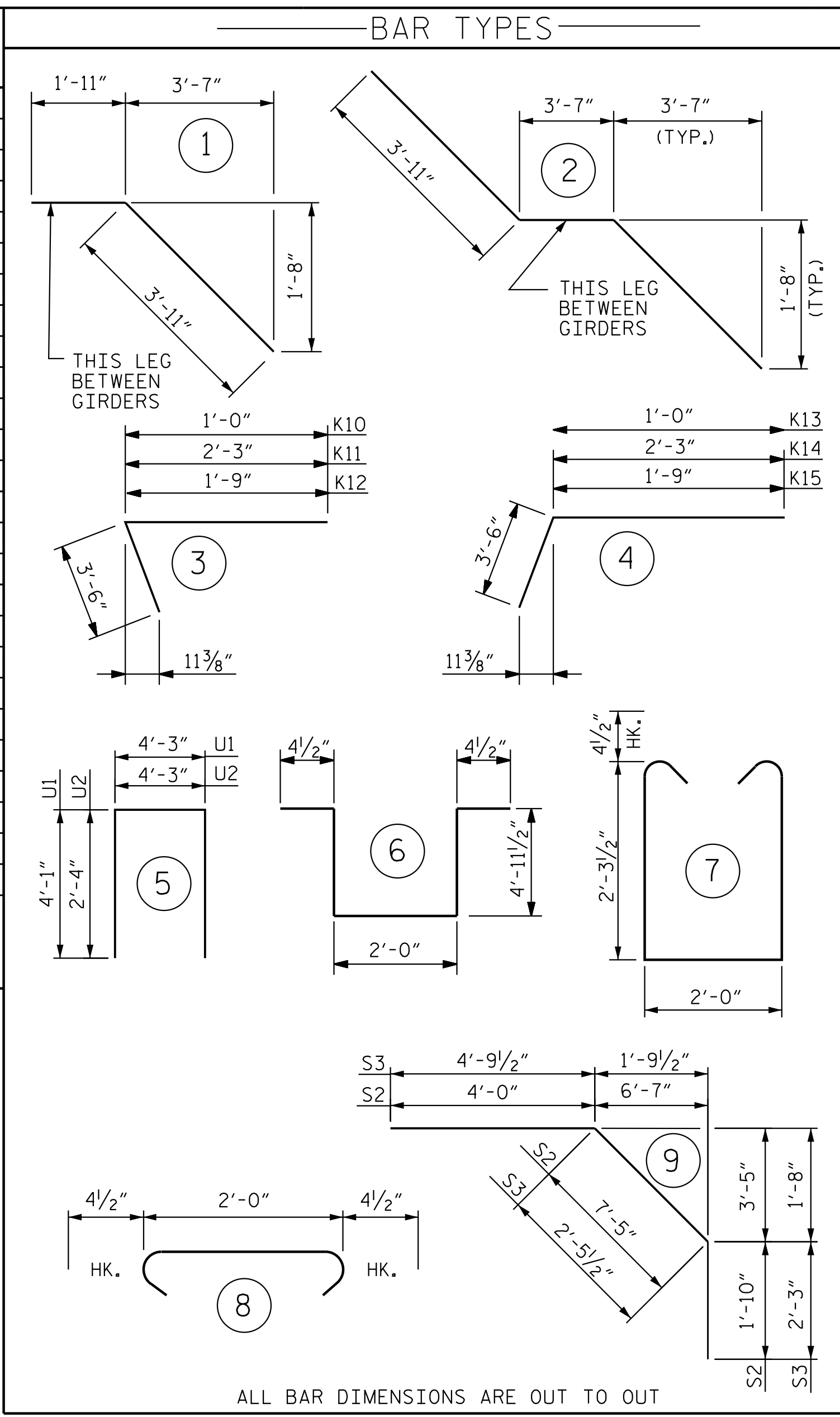


LAYOUT FOR COMPUTING AREA
REINFORCED CONCRETE DECK SLAB
(SQ. FT. = 6,575)

REINFORCING BAR SCHEDULE SPANS A & B											
BAR	NO.	SIZE	TYPE	LENGTH	WEIGHT	BAR	NO.	SIZE	TYPE	LENGTH	WEIGHT
*A1	299	#5	STR	32'-9"	10213	K1	20	#4	STR	17'-1"	228
A2	299	#5	STR	32'-9"	10213	K2	6	#4	STR	5'-3"	21
						K3	6	#4	STR	5'-6"	22
*A101	4	#5	STR	28'-10"	120	K4	18	#4	STR	7'-9"	93
*A102	4	#5	STR	24'-5"	102	K5	18	#4	STR	8'-4"	100
*A103	4	#5	STR	19'-11"	83	K6	6	#4	STR	6'-1"	24
*A104	4	#5	STR	15'-6"	65	K7	6	#4	STR	5'-2"	21
*A105	4	#5	STR	11'-1"	46	K8	10	#4	1	5'-10"	39
*A106	4	#5	STR	6'-7"	27	K9	10	#4	2	11'-9"	78
*A107	4	#5	STR	2'-2"	9	K10	2	#4	3	4'-6"	6
						K11	4	#4	3	5'-9"	15
A201	4	#5	STR	28'-10"	120	K12	2	#4	3	5'-3"	7
A202	4	#5	STR	24'-4"	102	K13	18	#4	4	4'-6"	54
A203	4	#5	STR	19'-11"	83	K14	4	#4	4	5'-9"	15
A204	4	#5	STR	15'-5"	64	K15	2	#4	4	5'-3"	7
A205	4	#5	STR	11'-0"	46	K16	12	#4	STR	5'-1"	41
A206	4	#5	STR	6'-6"	27						
A207	4	#5	STR	2'-1"	9	U1	32	#4	5	12'-5"	265
						U2	22	#4	5	8'-11"	131
*B1	96	#5	STR	50'-9"	5081	U3	18	#4	6	12'-8"	152
*B2	42	#6	STR	20'-6"	1293	U4	6	#4	7	7'-4"	29
*B3	183	#5	STR	32'-3"	6156						
*B4	42	#6	STR	23'-0"	1451	S1	90	#4	8	2'-9"	165
B5	112	#5	STR	50'-5"	5889	*S2	64	#4	9	13'-3"	566
						*S3	44	#4	9	9'-6"	279
*G1	2	#5	STR	33'-11"	71						
										REINFORCING STEEL	18,066 LBS.
										EPOXY COATED REINFORCING STEEL	25,562 LBS.



POURING SEQUENCE
ALONG -Y1-
⊕ = INDICATES POUR NUMBER AND DIRECTION OF POUR

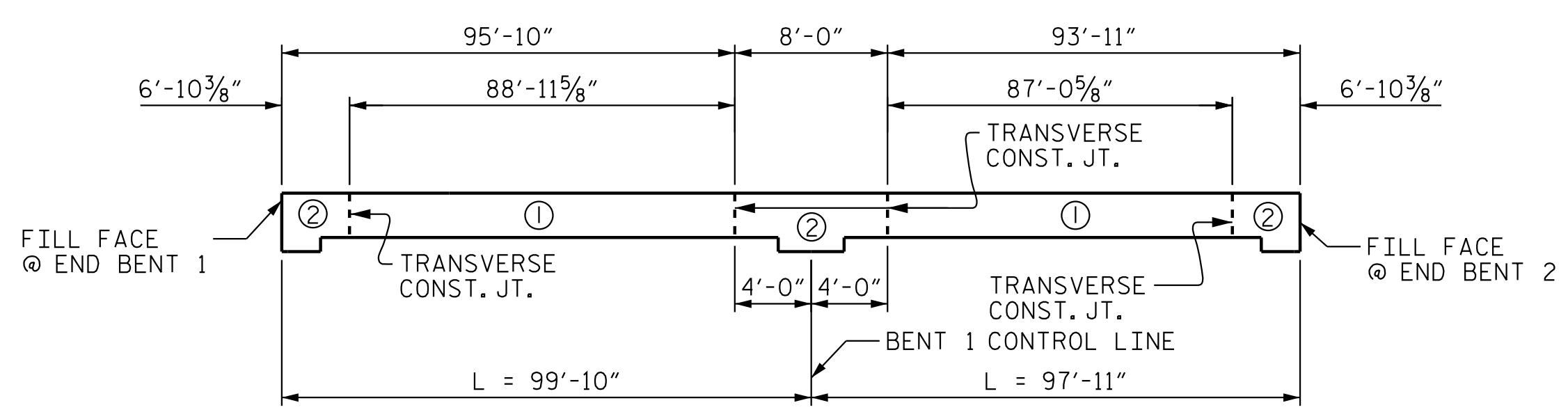
—SUPERSTRUCTURE BILL OF MATERIAL—			
	CLASS AA CONCRETE (CU. YDS.)	REINFORCING STEEL (LBS.)	EPOXY COATED REINFORCING STEEL (LBS.)
POUR #1	88.2		
POUR #2	109.4		
POUR #3	63.8		
TOTALS**	261.4	18,066	25,562

**QUANTITIES FOR BARRIER RAIL ARE NOT INCLUDED

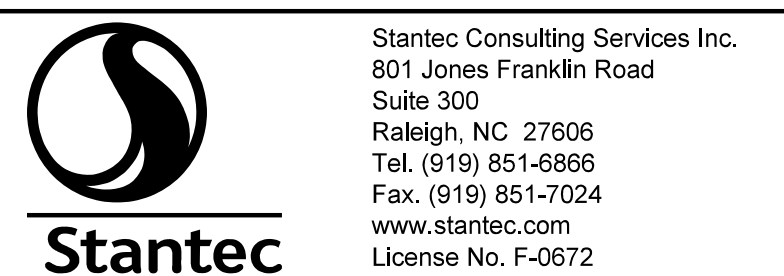
BAR SIZE	SUPERSTRUCTURE EXCEPT APPROACH SLABS, PARAPET, AND BARRIER RAIL		APPROACH SLABS		PARAPET AND BARRIER RAIL
	EPOXY COATED	UNCOATED	EPOXY COATED	UNCOATED	
#4	1'-11"	1'-7"	1'-11"	1'-7"	2'-6"
#5	2'-5"	2'-0"	2'-5"	2'-0"	3'-1"
#6	2'-10"	2'-5"	3'-7"	2'-5"	3'-8"
#7	4'-2"	2'-9"			
#8	4'-9"	3'-2"			

GROOVING BRIDGE FLOORS	
APPROACH SLABS	765 SQ.FT.
BRIDGE DECK	5,330 SQ.FT.
TOTAL	6,095 SQ.FT.

PROJECT NO. R-2707D
CLEVELAND COUNTY
STATION: 19+82.46 -Y1-



OPTIONAL POURING SEQUENCE
POUR 2 CAN NOT BE STARTED UNTIL BOTH ADJACENT 1 POURS REACH A MINIMUM OF 3,000 PSI



DRAWN BY: J. F. KENNEDY DATE: 01/24/18
CHECKED BY: N. D'AIUTO DATE: 01/25/18
DESIGN ENGINEER OF RECORD: J. KELVINGTON DATE: 06/22/23



STATE OF NORTH CAROLINA
DEPARTMENT OF TRANSPORTATION
RALEIGH

SUPERSTRUCTURE
BILL OF MATERIAL

REVISIONS						SHEET NO. S1-21
NO.	BY:	DATE:	NO.	BY:	DATE:	
1			3			TOTAL SHEETS 32
2			4			

DOCUMENT NOT CONSIDERED FINAL UNLESS ALL SIGNATURES COMPLETED

6/22/2023 11:41:56 AM jHagenbush c:\pvt\work\king\dms55345\192707D_SML_BM_220488.dgn