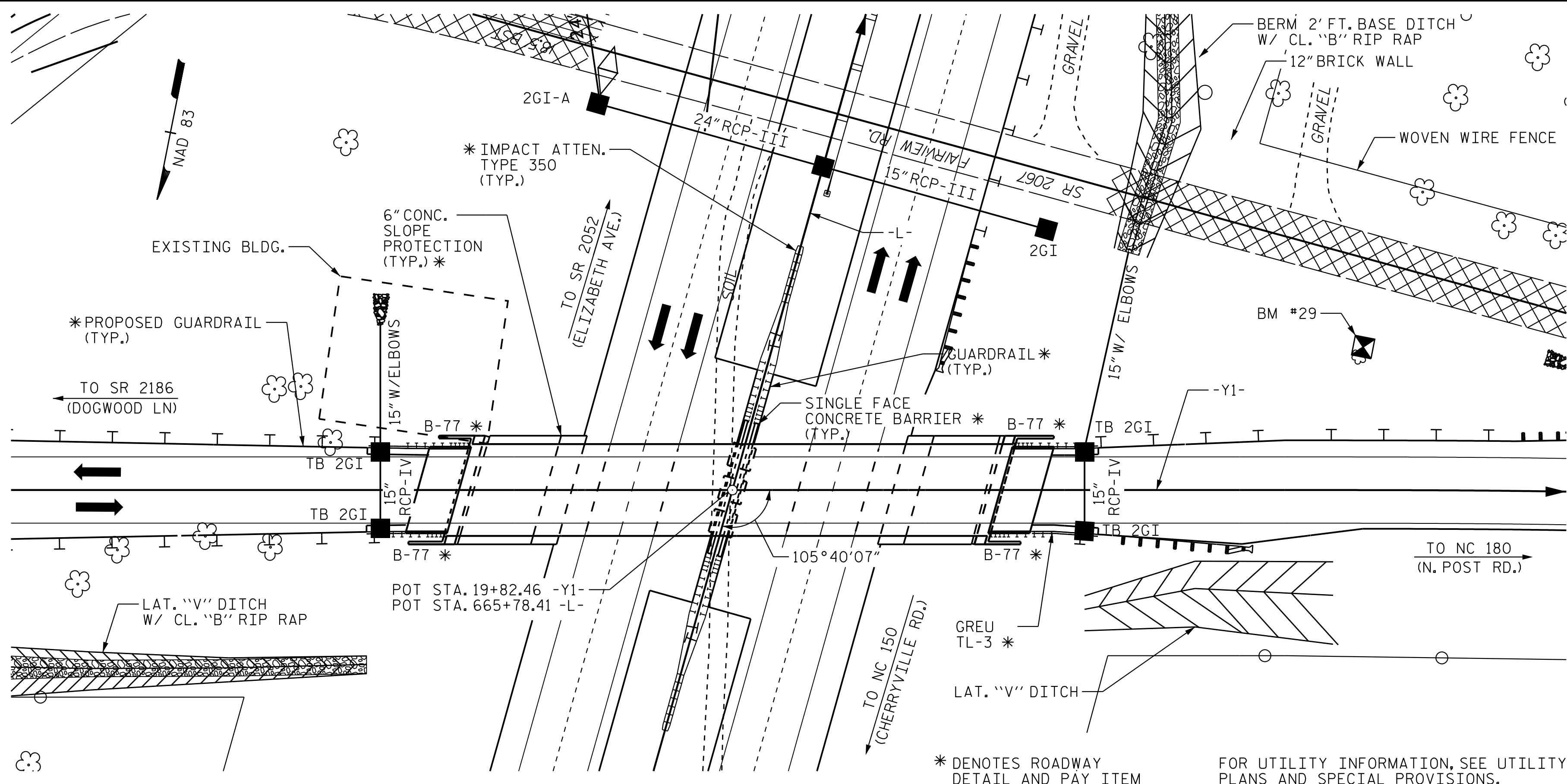


BM #29: NAIL IN BASE OF 8" CEDAR. N573591 E1259149, STA. 666+89.97 -L-, 205.93' RT. EL. 892.51



LOCATION SKETCH

NOTES

- ASSUMED LIVE LOAD = HL-93 OR ALTERNATE LOADING.
- THIS BRIDGE HAS BEEN DESIGNED IN ACCORDANCE WITH THE REQUIREMENTS OF THE ASSHTO LRFD BRIDGE DESIGN SPECIFICATION.
- THIS BRIDGE IS LOCATED IN SEISMIC ZONE 1.
- FOR OTHER DESIGN DATA AND GENERAL NOTES, SEE SHEET SN.
- FOR SUBMITTAL OF WORKING DRAWINGS, SEE SPECIAL PROVISIONS.
- FOR FALSEWORK AND FORMWORK, SEE SPECIAL PROVISIONS.
- FOR CRANE SAFETY, SEE SPECIAL PROVISIONS.
- FOR GROUT FOR STRUCTURES, SEE SPECIAL PROVISIONS.
- REMOVABLE FORMS MAY BE USED IN LIEU OF METAL STAY-IN-PLACE FORMS IN ACCORDANCE WITH ARTICLE 420-3 OF THE STANDARD SPECIFICATIONS.
- NEEDLE BEAMS WILL NOT BE ALLOWED UNLESS OTHERWISE CALLED FOR ON THE PLANS OR APPROVED BY THE ENGINEER.
- WORK SHALL NOT BE STARTED ON THE BRIDGE (OR SPECIFIC PARTS OF THE BRIDGE) UNTIL ROADWAY SECTION HAS BEEN EXCAVATED.
- THE CLASS AA CONCRETE IN THE BRIDGE DECK SHALL CONTAIN FLY ASH OR GROUND GRANULATED BLAST FURNACE SLAG AT THE SUBSTITUTION RATE SPECIFIED IN ARTICLE 1024-1 AND IN ACCORDANCE WITH ARTICLES 1024-5 AND 1024-6 OF THE STANDARD SPECIFICATIONS. NO PAYMENT WILL BE MADE FOR THIS SUBSTITUTION AS IT IS CONSIDERED INCIDENTAL TO THE COST OF THE REINFORCED CONCRETE DECK SLAB.
- FOR EROSION CONTROL MEASURES, SEE EROSION CONTROL PLANS.
- FOR MODIFIED 54" PRESTRESSED CONCRETE GIRDERS, SEE SPECIAL PROVISIONS.

TOTAL BILL OF MATERIAL

	FOUNDATION EXCAVATION FOR BENT 1	PDA TESTING	REINFORCED CONCRETE DECK SLAB	GROOVING BRIDGE FLOORS	CLASS A CONCRETE	BRIDGE APPROACH SLABS	REINFORCING STEEL	SPIRAL COLUMN REINFORCING STEEL	PILE DRIVING EQUIPMENT SETUP FOR HP 12X53 STEEL PILES	HP 12X53 STEEL PILES		STEEL PILE POINTS	CONCRETE BARRIER RAIL	4" SLOPE PROTECTION	ELASTOMERIC BEARINGS	MODIFIED 54" PRESTRESSED CONCRETE GIRDERS	
	LUMP SUM	EA.	SQ.FT.	SQ.FT.	CU.YDS.	LUMP SUM	LBS.	LBS.	EA.	NO.	LIN.FT.	EA.	LIN.FT.	SQ.YDS.	LUMP SUM	NO.	LIN.FT.
SUPERSTRUCTURE			6,575	6,095		LUMP SUM							392.0		LUMP SUM	8	774.33
END BENT 1					39.8		6,265		7	7	350			139			
BENT 1	LUMP SUM				60.9		11,273	1,102	15	15	450						
END BENT 2					39.5		6,162		7	7	350	7		132			
TOTAL	LUMP SUM	1	6,575	6,095	140.2	LUMP SUM	23,700	1,102	29	29	1,150	7	392.0	271	LUMP SUM	8	774.33

PROJECT NO. R-2707D
 CLEVELAND COUNTY
 STATION: 19+82.46 -Y1-

SHEET 3 OF 3

Stantec Consulting Services Inc.
 801 Jones Franklin Road
 Suite 300
 Raleigh, NC 27606
 Tel. (919) 851-6866
 Fax. (919) 851-7024
 www.stantec.com
 License No. F-0672

Joseph T. Kelvington
 4/27/2023

STATE OF NORTH CAROLINA
 DEPARTMENT OF TRANSPORTATION
 RALEIGH
GENERAL DRAWING
 FOR BRIDGE OVER US 74 BYPASS
 ON SR 2067 (FAIRVIEW RD.)
 BETWEEN SR 2052 (ELIZABETH AVENUE)
 AND NC 150 (CHERRYVILLE RD.)

DRAWN BY: J. E. HAGENBUSH DATE: 01/25/18
 CHECKED BY: N. D'AIUTO DATE: 01/29/18
 DESIGN ENGINEER OF RECORD: J. KELVINGTON DATE: 04/27/23

NO.	BY:	DATE:	REVISIONS			SHEET NO.
			NO.	BY:	DATE:	
1			3			32
2			4			

DOCUMENT NOT CONSIDERED FINAL UNLESS ALL SIGNATURES COMPLETED

4/27/2023 10:19:44 AM jHagenbush
 4/27/2023 10:19:44 AM jHagenbush
 4/27/2023 10:19:44 AM jHagenbush