

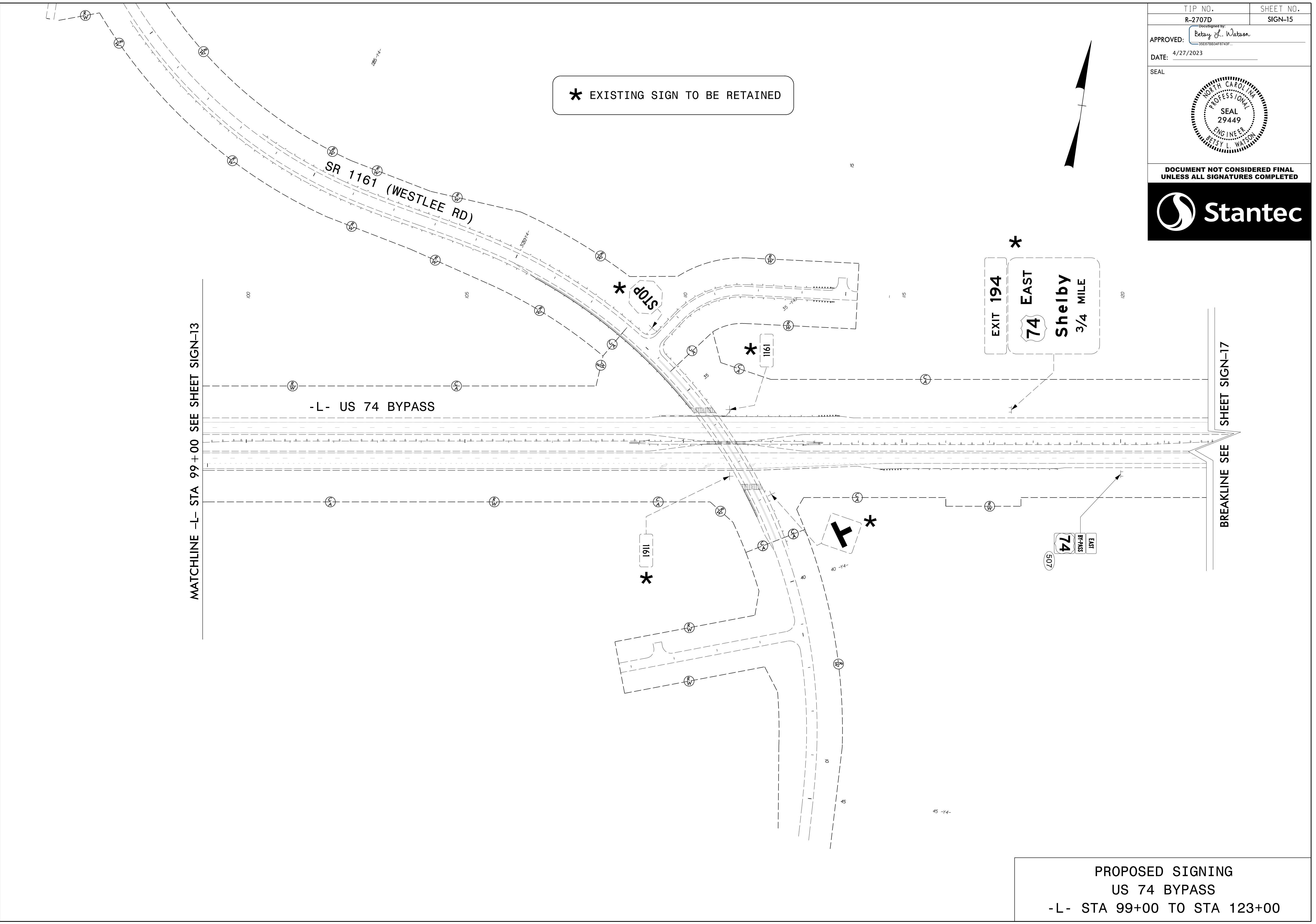
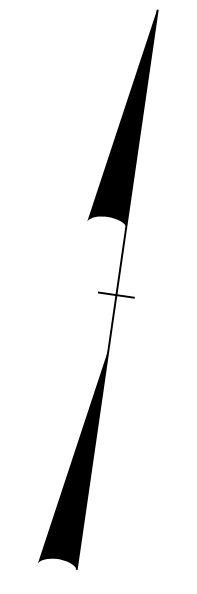


TIP NO. R-2707D	SHEET NO. SIGN-15
APPROVED: <i>Betsy L. Watson</i> <small>REGISTERED PROFESSIONAL ENGINEER</small>	
DATE: 4/27/2023	
SEAL	
	
DOCUMENT NOT CONSIDERED FINAL UNLESS ALL SIGNATURES COMPLETED	
	



* EXISTING SIGN TO BE RETAINED



MATCHLINE -L- STA 99 + 00 SEE SHEET SIGN-13

BREAKLINE SEE SHEET SIGN-17

PROPOSED SIGNING
US 74 BYPASS
-L- STA 99+00 TO STA 123+00

\$\$\$\$\$SYTIME\$\$\$\$\$
\$\$\$\$\$DGN\$\$\$\$\$
\$\$\$\$\$USERNAME\$\$\$\$\$